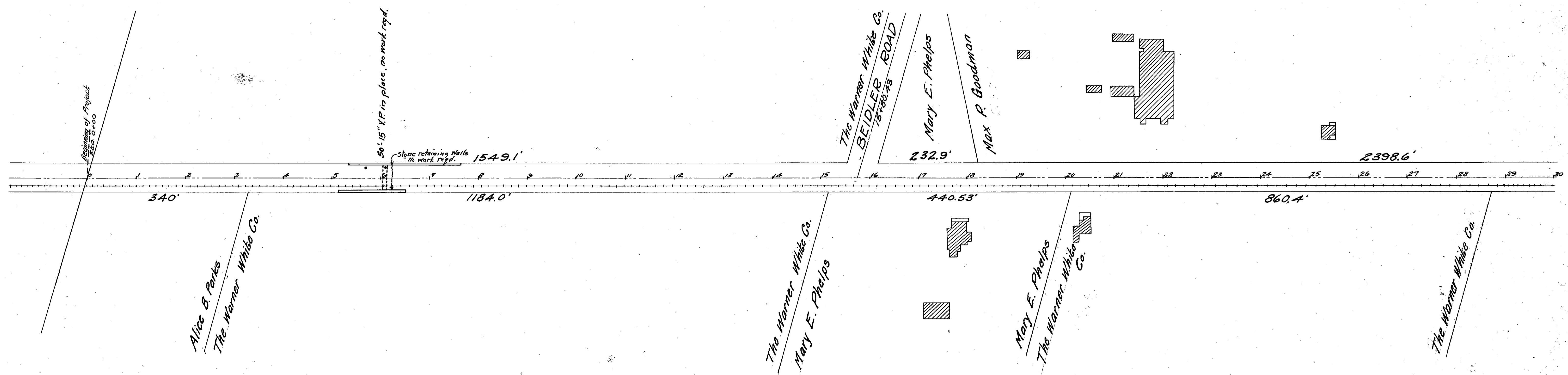


|                    |       |                  |             |
|--------------------|-------|------------------|-------------|
| FED. RD. DIST. NO. | STATE | FED. AID PROJECT | FISCAL YEAR |
| 10                 | OHIO  | 277              | 1922        |

3  
4

I.C.H. No. 2 SEC. B  
LAKE COUNTY

FINAL SURVEY PLATTED  
NOTE: CORRECTIONS BY THE ENGINEER



B.M. #1 Spike in root 2nd maple west of stop 32 Elev. 674.97

B.M. #2 cross on N. retaining wall at 7th post from W. end Elev. 670.00 6+12.8

B.M. #3 Nail in apple tree 600' east of retaining wall Elev. 679.87 12+43.7

B.M. #4 Nail in root of 36" maple at stop 33 Elev. 684.76 18+79

B.M. #5 Spike in west side of 14" poplar at east end of row Elev. 686.30 28+49

Grade line as shown is crown of finished pavement

