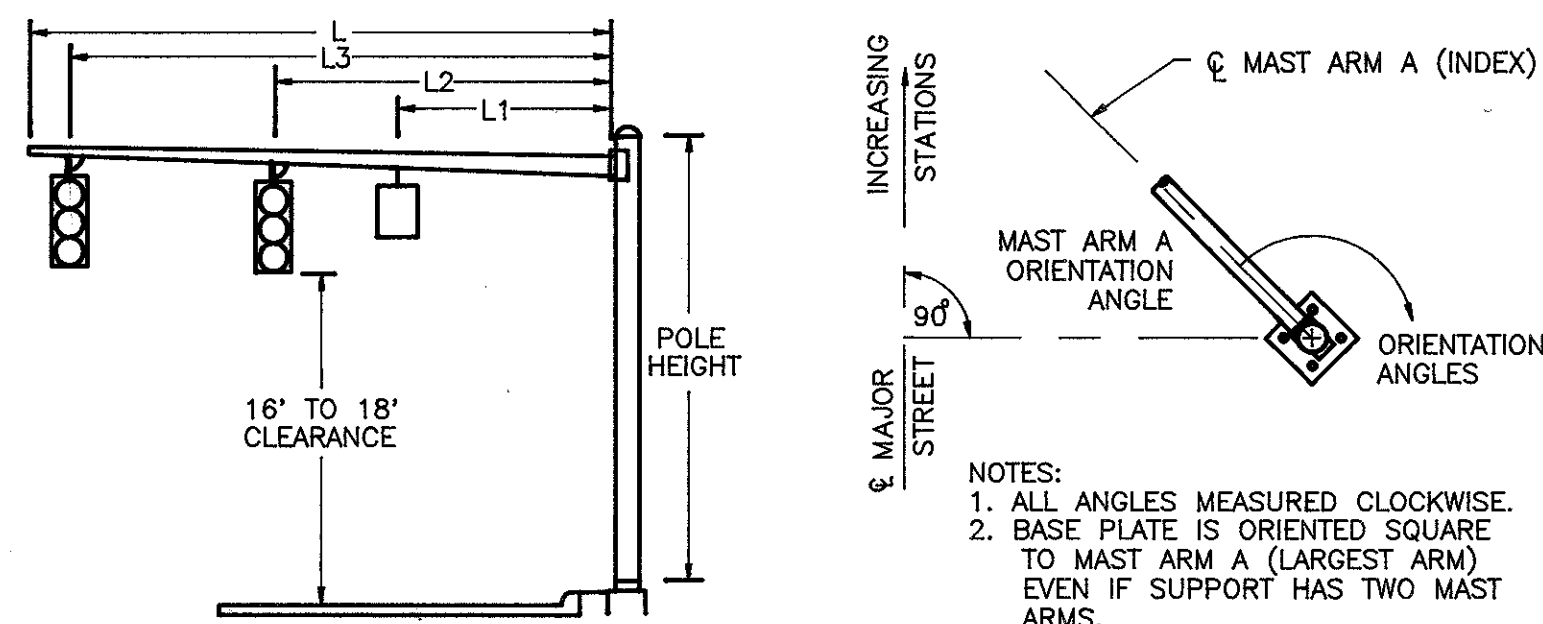
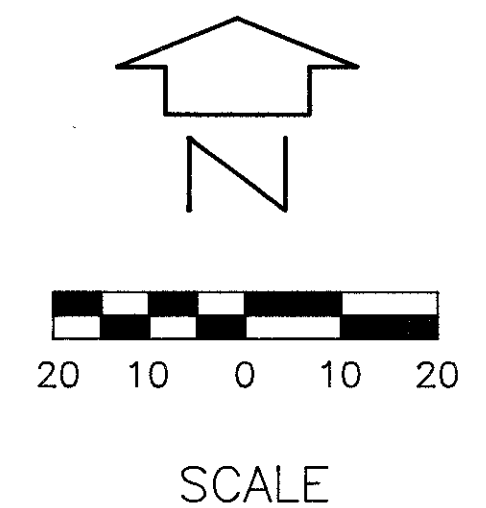


ORIENTATION ANGLES

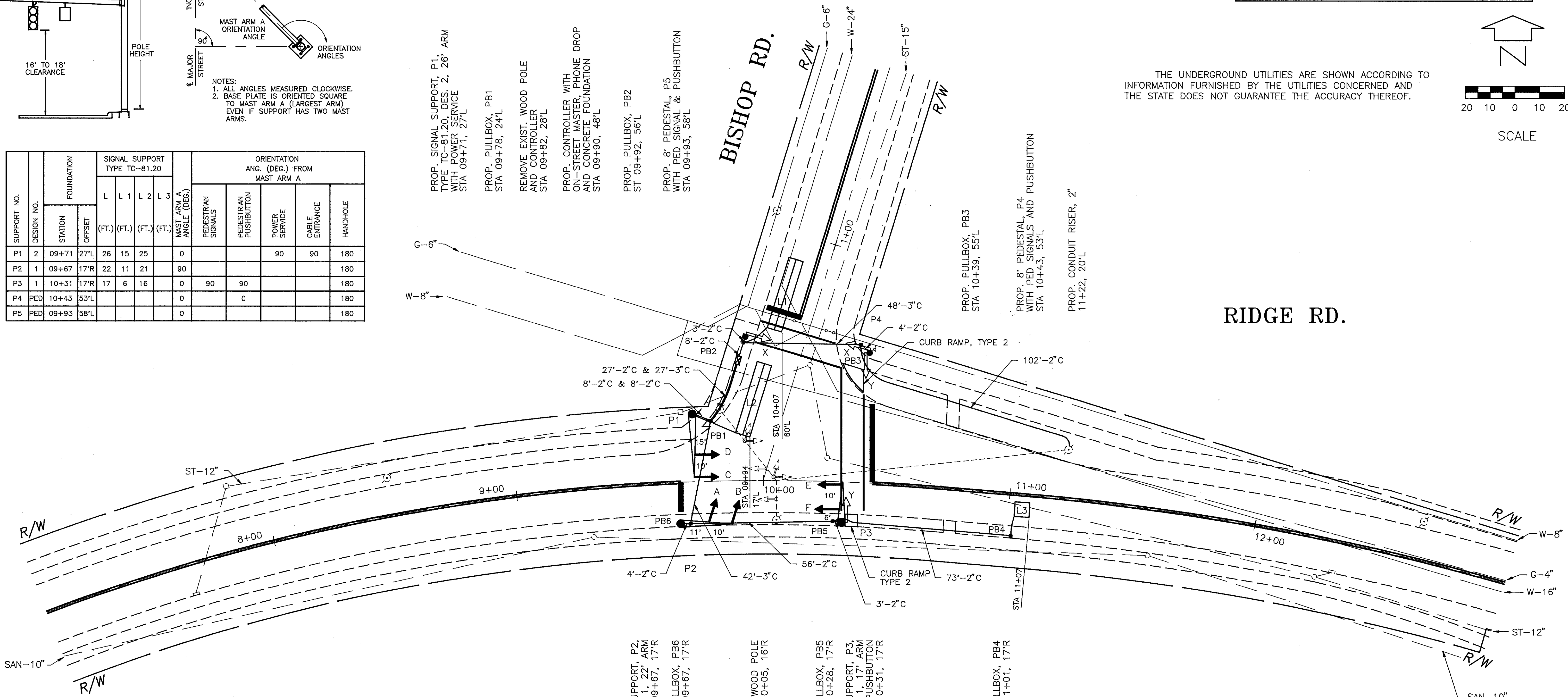


NOTES:
 1. ALL ANGLES MEASURED CLOCKWISE.
 2. BASE PLATE IS ORIENTED SQUARE TO MAST ARM A (LARGEST ARM) EVEN IF SUPPORT HAS TWO MAST ARMS.

SUPPORT NO.	DESIGN NO.	FOUNDATION		SIGNAL SUPPORT TYPE TC-81.20				ORIENTATION ANG. (DEG.) FROM MAST ARM A				
		STATION	OFFSET	L (FT.)	L 1 (FT.)	L 2 (FT.)	L 3 (FT.)	MAST ARM A ANGLE (DEG.)	PEDESTRIAN SIGNALS	PEDESTRIAN PUSHBUTTON	POWER SERVICE	CABLE ENTRANCE
P1	2	09+71	27'L	26	15	25	0			90	90	180
P2	1	09+67	17'R	22	11	21	90					180
P3	1	10+31	17'R	17	6	16	0	90	90			180
P4	PED	10+43	53'L				0		0			180
P5	PED	09+93	58'L				0					180



THE UNDERGROUND UTILITIES ARE SHOWN ACCORDING TO INFORMATION FURNISHED BY THE UTILITIES CONCERNED AND THE STATE DOES NOT GUARANTEE THE ACCURACY THEREOF.



SIGNALS



A, B, C, D, E & F
 ALL HEADS ARE 12" POLY

X - X
 Y - Y
 TYPE "D-2"

ALL PAVEMENT MARKINGS BY OTHERS

PROP. SIGNAL SUPPORT, P2, TYPE TC-81.20, DES. 1, 22' ARM WITH PED SIGNAL AND PUSHBUTTON STA 09+67, 17'R

PROP. PULLBOX, PB6 STA 09+67, 17'R

REMOVE EXIST. WOOD POLE AND CONTROLLER STA 10+05, 16'R

PROP. PULLBOX, PB5 STA 10+28, 17'R

PROP. SIGNAL SUPPORT, P3, TYPE TC-81.20, DES. 1, 17' ARM WITH PED SIGNAL AND PUSHBUTTON STA 10+31, 17'R

PROP. PULLBOX, PB4 STA 11+01, 17'R