

SIGNAL DISPLAY CHART

SIGNAL HEAD	ø1		ø2		ø3		FLASH
	R/W	CLEAR	R/W	CLEAR	R/W	CLEAR	
A	R	R	R	R	R	R	R
B	R	R	R	R	R	R	R
C	R	R	R	G	G	Y	R
D	R	R	R	G	G	Y	R
E	G	G	G	G	Y	R	R
F	G	G	G	G	Y	R	R
X-Y	D	D	D	W	FD	D	D
Y-Y	D	D	D	D	D	D	D

LOOP DETECTOR CHART

LOOP #	SIZE	# TURNS	MODE	DELAY	AMP #	PHASE
L1	6' x 20'	2-4-2	PRESENCE	0	1	1
L2	6' x 35'	2-4-2	PRESENCE	8	2	3
L3	6' x 35'	2-4-2	PRESENCE	0	3	3
L4	6' x 6'	3	PRESENCE	0	4	SYSTEM
L5	6' x 6'	3	PRESENCE	0	5	SYSTEM
L6	6' x 6'	3	PRESENCE	0	6	SYSTEM
L7	6' x 6'	3	PRESENCE	0	7	SYSTEM

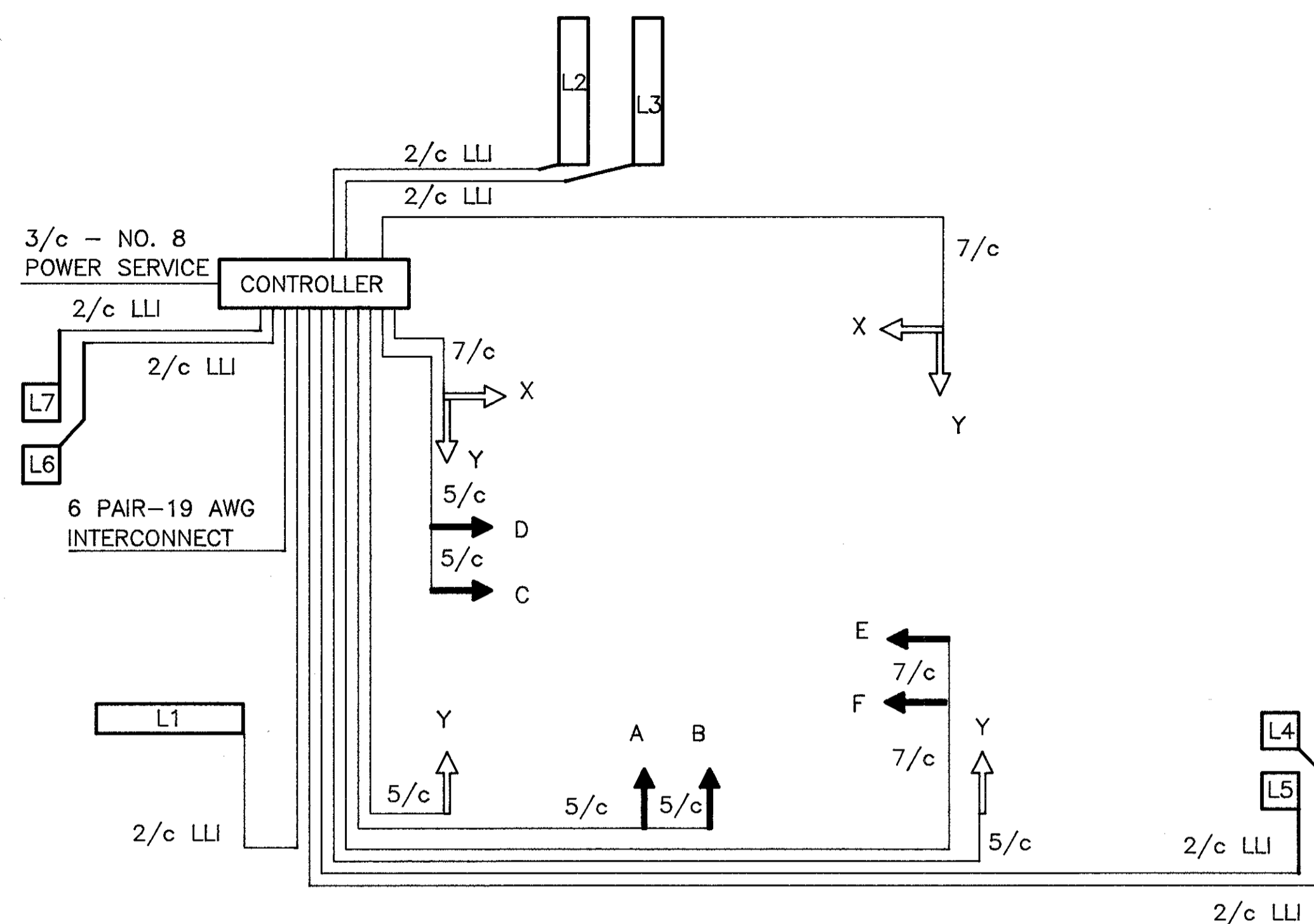
COORDINATION TIMING

	DIAL 1	DIAL 2	DIAL 3
CYCLE LENGTH	80 SEC	90 SEC	
PHASE 1 SPLIT	28 %	21 %	
PHASE 2 SPLIT	33 %	44 %	
PHASE 3 SPLIT	39 %	34 %	
PERMISSIVE	10 %	10 %	
OFFSET	47 %	13 %	
TIME OF DAY SCHEDULE	ALL OTHER TIMES	3:00PM TO 6:30PM MON-SAT	

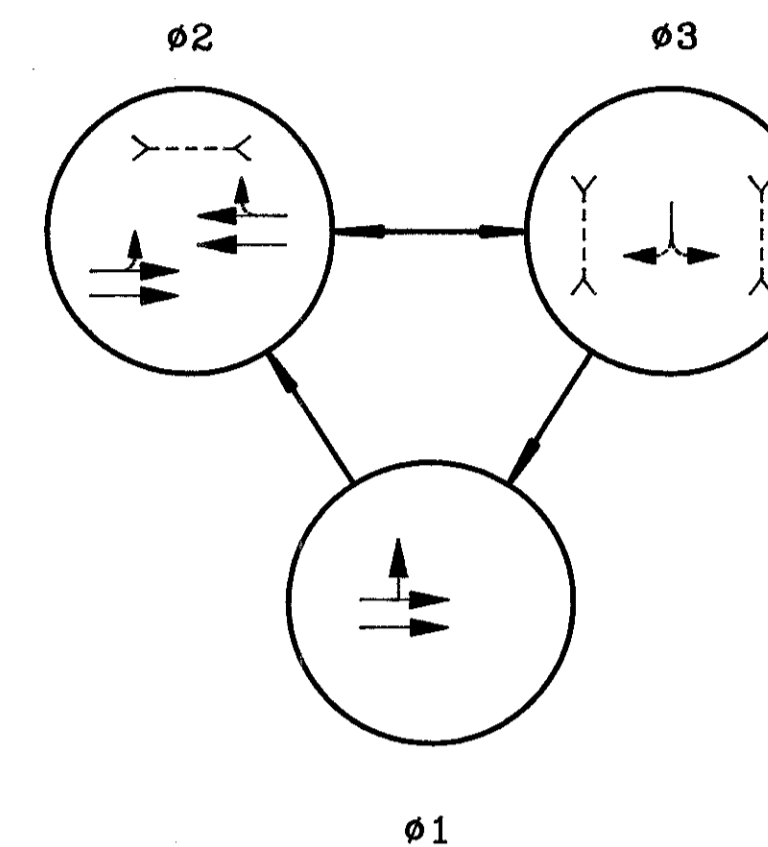
NOTES:

1. PHASE SPLITS SHALL INCLUDE ALL GREEN PLUS YELLOW & ALL RED
2. PERMISSIVES SHALL START AT THE ZERO POINT OF THE CYCLE
3. OFFSETS SHALL BE REFERENCED TO THE BEGINNING OF PHASE 2 YELLOW

WIRING DIAGRAM



PHASING DIAGRAM



SIGNAL TIMING

INTERVAL	ø1	ø2	ø3
INITIAL	7	21	10
PASSAGE	2.5	5.0	3.0
YELLOW	3.6	3.6	3.1
RED CLEAR	1.0	1.0	1.4
MAX I	8	37	22
MAX II	8	37	22
WALK	0	7	7
PED CLEAR	0	14	19
RECALL	NONE	PED	NONE
MEMORY	OFF	LOCK	LOCK

ITEM	TOTAL	UNIT	DESCRIPTION
625	5	EACH	GROUND ROD
625	7	EACH	PULLBOX, 713.08, 18", AS PER PLAN
625	522	LIN FT	CONDUIT, 2", 713.04
625	231	LIN FT	CONDUIT, 3", 713.04
625	197	LIN FT	TRENCH
625	399	LIN FT	TRENCH IN PAVED AREAS, TYPE "B"
632	5	EACH	VEHICULAR SIGNAL HEAD, 3 SECT., 12" LENS, 1 WAY, AS PER PLAN
632	1	EACH	VEHICULAR SIGNAL HEAD, 5 SECT., 12" LENS, 1 WAY, AS PER PLAN
632	6	EACH	PEDESTRIAN SIGNAL HEAD, TYPE "D-2"
632	4	EACH	PEDESTRIAN PUSHBUTTON WITH R-73C-9 SIGN
632	6	EACH	LOOP DETECTOR UNIT, AS PER PLAN
632	1	EACH	LOOP DETECTOR UNIT, DELAY & EXTENSION TYPE, AS PER PLAN
632	497	LIN FT	LOOP DETECTOR PAVEMENT CUTTING
632	4.82	CU YD	CONCRETE FOR ANCHOR BASE FOUNDATIONS
632	1	EACH	SIGNAL SUPPORT, TYPE TC-81.20, DES. 1, 20' ARM
632	1	EACH	SIGNAL SUPPORT, TYPE TC-81.20, DES. 3, 32' ARM
632	1	EACH	SIGNAL SUPPORT, TYPE TC-81.20, DES. 3, 36' ARM
632	1	EACH	PEDESTAL, 8', TRANSFORMER BASE
632	2	EACH	CONDUIT RISER, 2" DIAMETER
632	514	LIN FT	SIGNAL CABLE, 5 CONDUCTOR, NO. 14 AWG
632	384	LIN FT	SIGNAL CABLE, 7 CONDUCTOR, NO. 14 AWG
632	1364	LIN FT	LOOP DETECTOR WIRE, TYPE E
632	866	LIN FT	LOOP DETECTOR LEAD-IN CABLE
632	178	LIN FT	POWER CABLE, 3 CONDUCTOR, NO. 8 AWG
632	1	EACH	POWER SERVICE
632	6	EACH	COVERING OF VEHICULAR SIGNAL HEADS
632	1	EACH	REMOVAL OF TRAFFIC SIGNAL INSTALLATION, AS PER PLAN
633	1	EACH	CONTROLLER, ACTUATED, 3 PHASE, SOLID-STATE DIGITAL, MICROPROCESSOR, AS PER PLAN
633	1	EACH	COORDINATOR, MULTI-DIAL, SOLID-STATE, DIGITAL, MICROPROCESSOR, SECONDARY