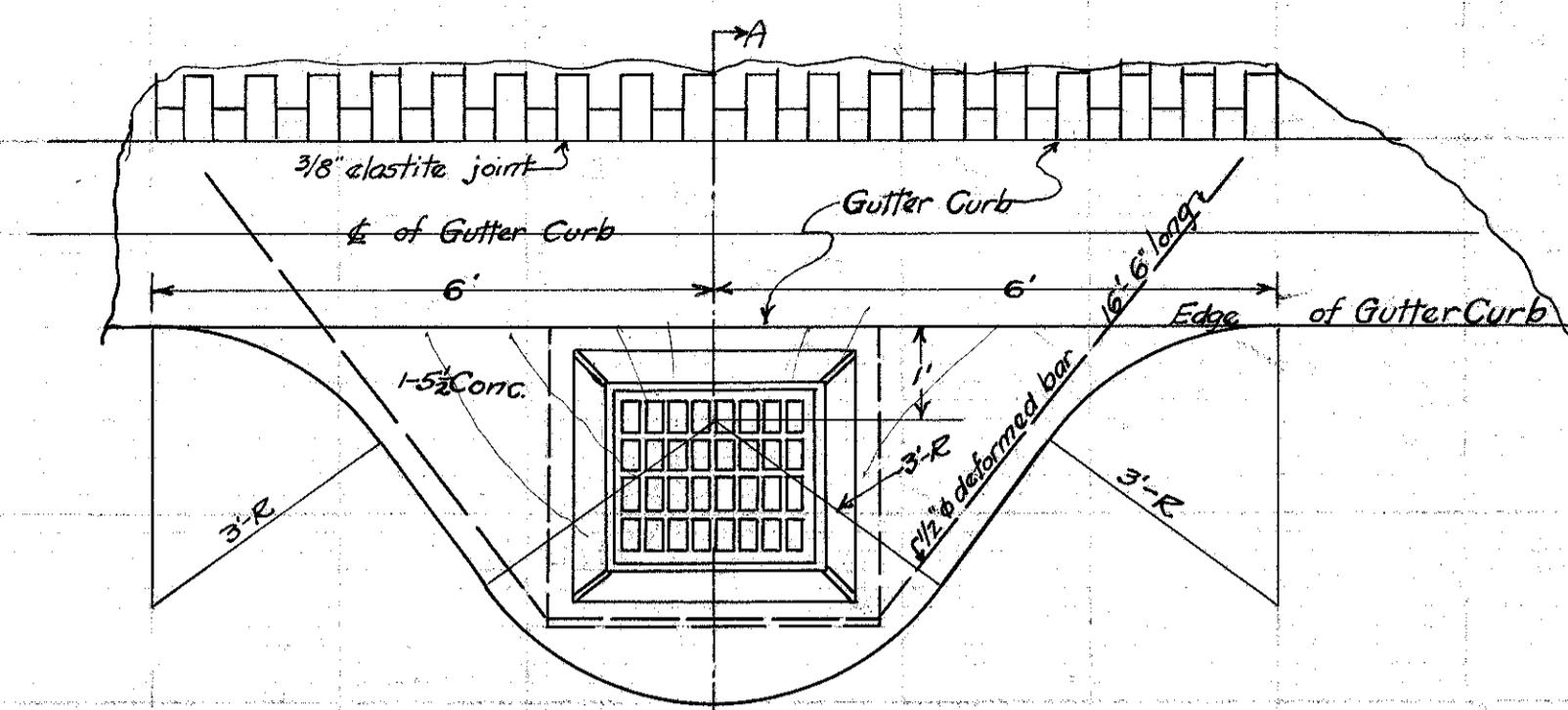
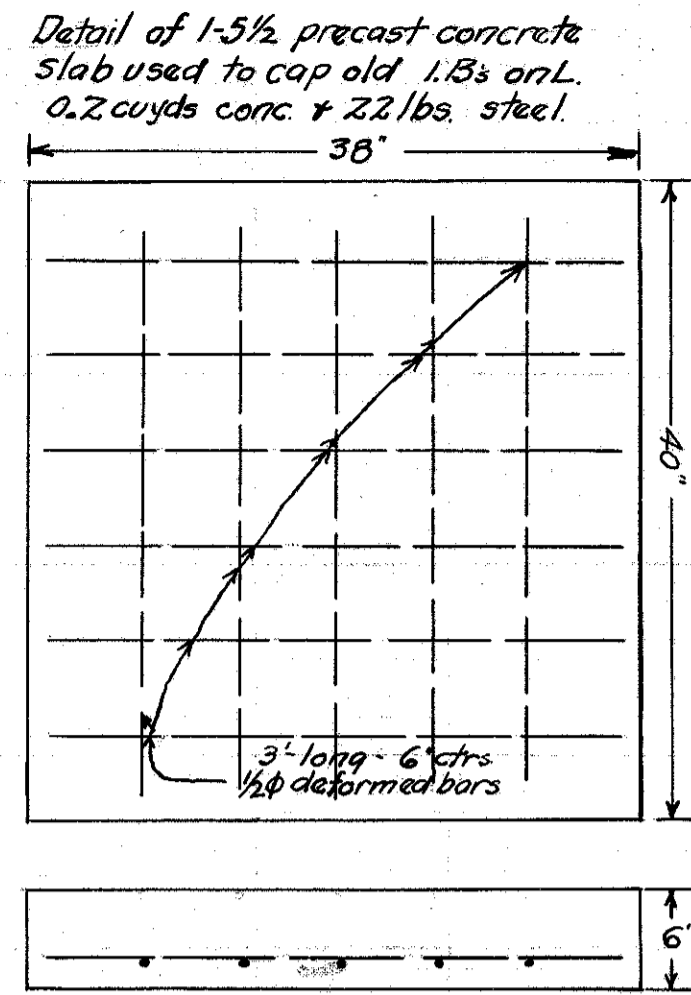
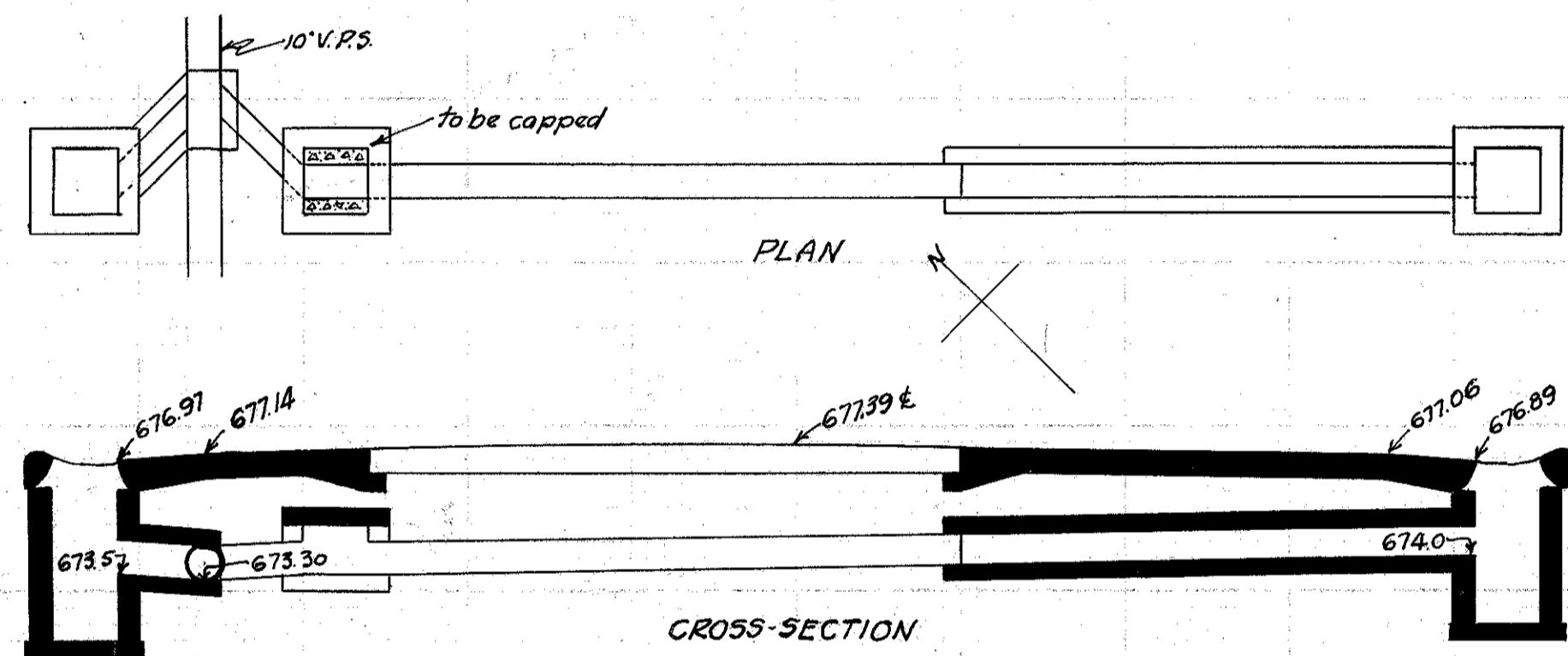


FED. RD. DIST. NO.	STATE	FED. AID PROJECT	FISCAL YEAR	51
10	OHIO	519C	1929	52

S.H. No. 2 Sec. G.H., + Mentor.
LAKE COUNTY

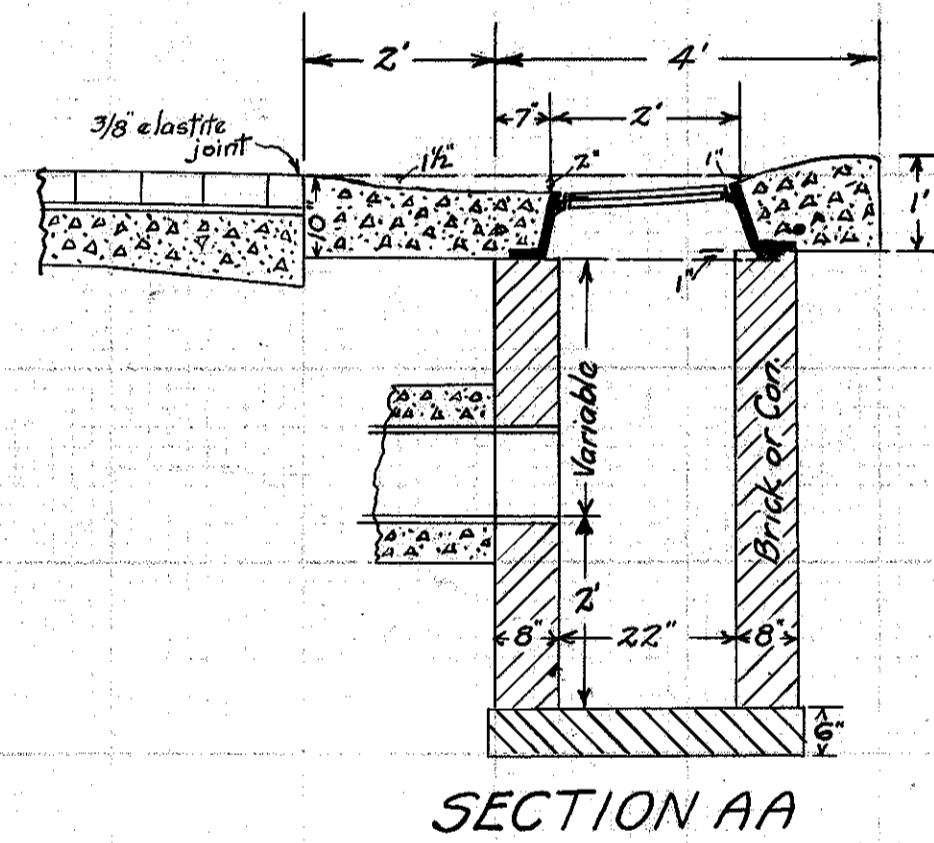


PLAN OF STANDARD CATCH BASIN
Note: Present Inlet Basin tops to be reset. 1-5/8 Conc. and 1/2 inch bar around castings to be considered as part of the catch basin.

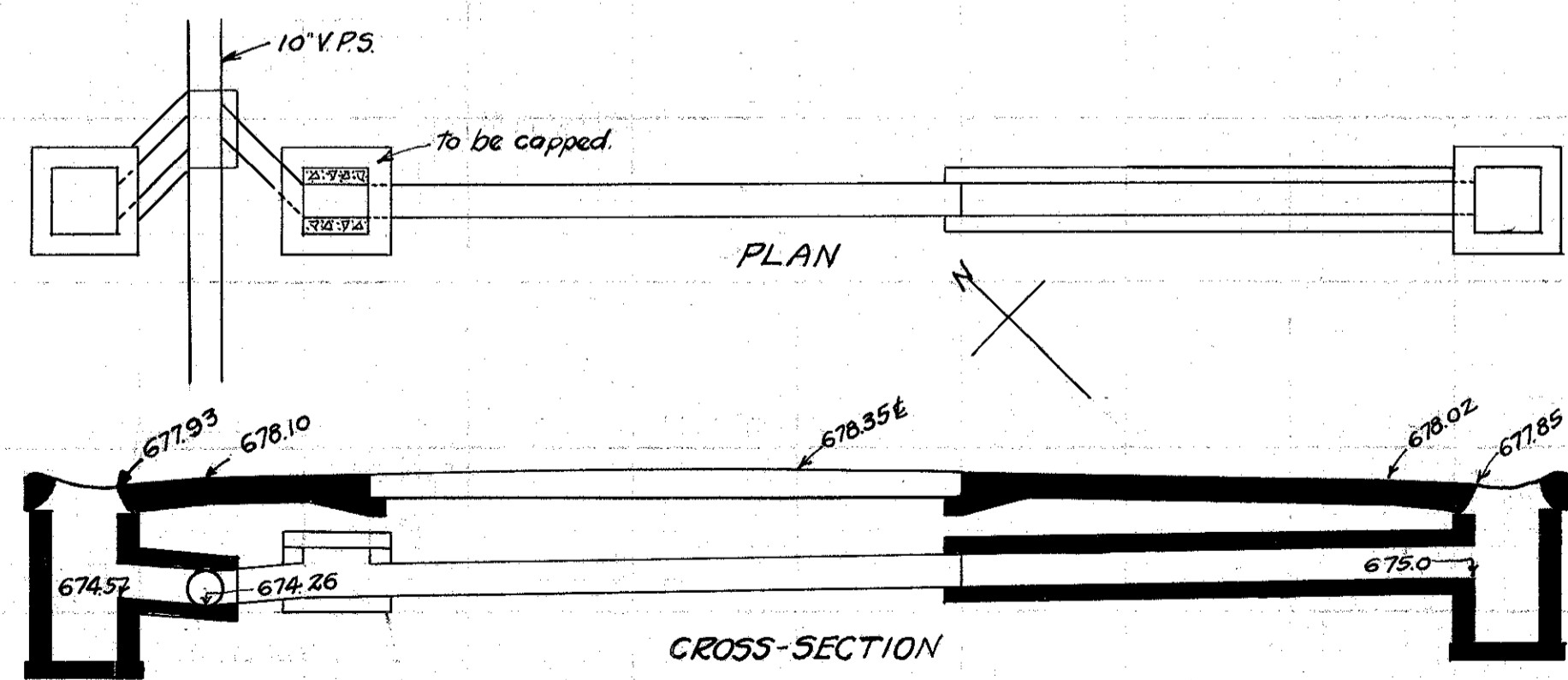


CULVERT DATA
Type: Std. V.S.P. culvert Dr. #300
Size: 10' x 18'
Work Req.: Extend pres culvert to R. with 10' x 16' Std. V.P. enc. culvert
Build C.B. R+L. On L. connect to pres. sewer with 10' x 2' V.P. enc.
Cap old I.B. on L.
Drawn by Beebe + Plummer. Checked by
Date 2-21-29 Date

EST. QUANTITIES
Exc. 46 cu. yds.
Con. 1-8 1.79 cu. yds.
Con. 1-5/8 (precast cap) 0.2 cu. yds.
Reinf. Steel 22 lbs.
10' V.P. 18 lin. ft.
C.B. (old covers reset) (Rdwy.) 2
Sta. 432+68

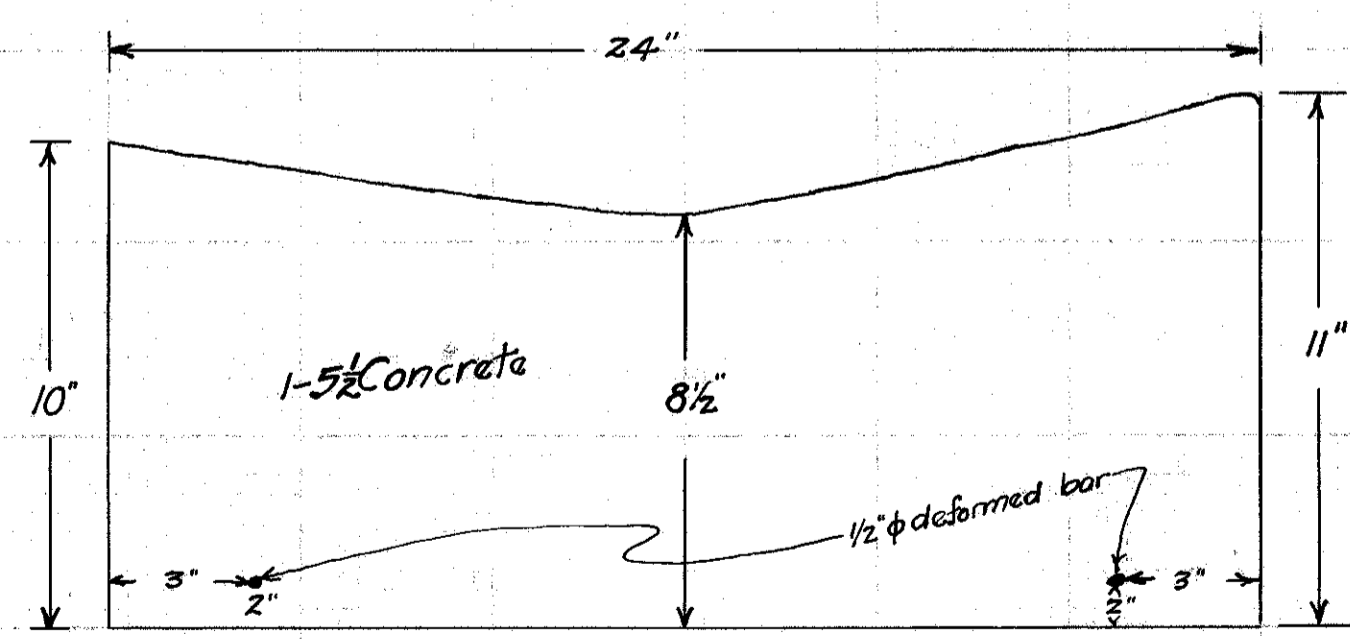


SECTION AA



CULVERT DATA
Type: Std. V.S.P. culvert Dr. #300
Size: 10' x 18'
Work Req.: Extend pres. culvert to R. with 10' x 16' Std. V.P. enc. culvert
Build C.B. R+L. On L. connect to pres. culvert with 10' x 2' V.P. enc.
Cap old I.B. on L.
Drawn by Beebe + Plummer. Checked by
Date 2-21-29 Date

EST. QUANTITIES
Exc. 5.0 cu. yds.
Con. 1-8 1.79 cu. yds.
Con. 1-5/8 (precast cap) 0.2 cu. yds.
Reinf. Steel 22 lbs.
10' V.P. 18 lin. ft.
C.B. (old covers reset) (Rdwy.) 2
Sta. 426+63



Section of Gutter Curb where new is required
Estimated 10,553 lin. ft. required