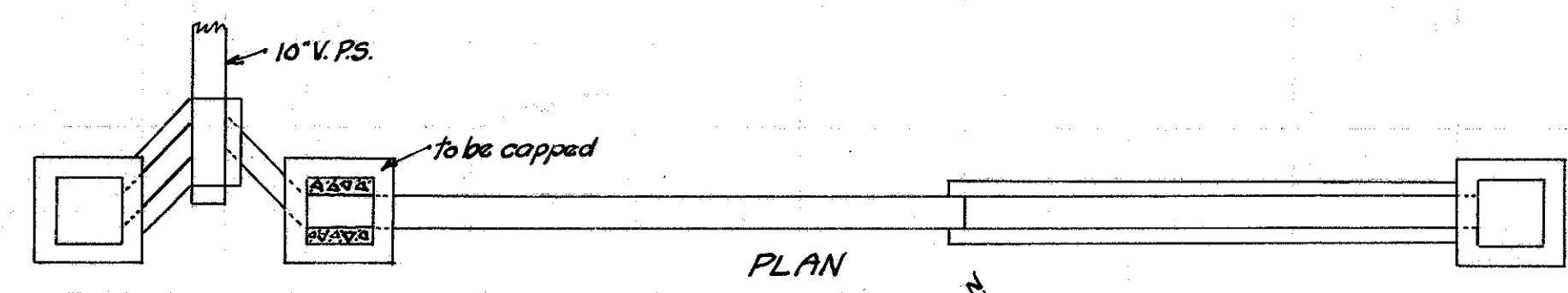
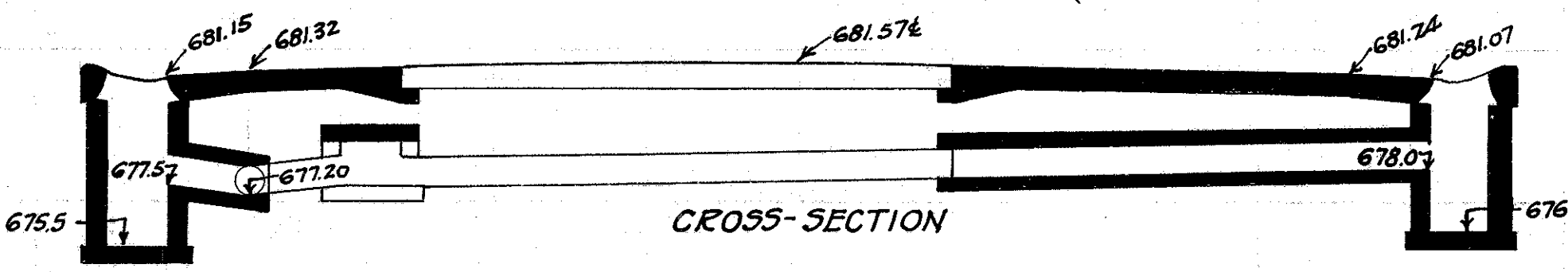


FED. RD. DIST. N ^o	STATE	FED. AID PROTECT	FISCAL YEAR	50
10	OHIO	519C.	1929	52

S.H. N^o 2 Sec. G, H + Meritor.
LAKE COUNTY.

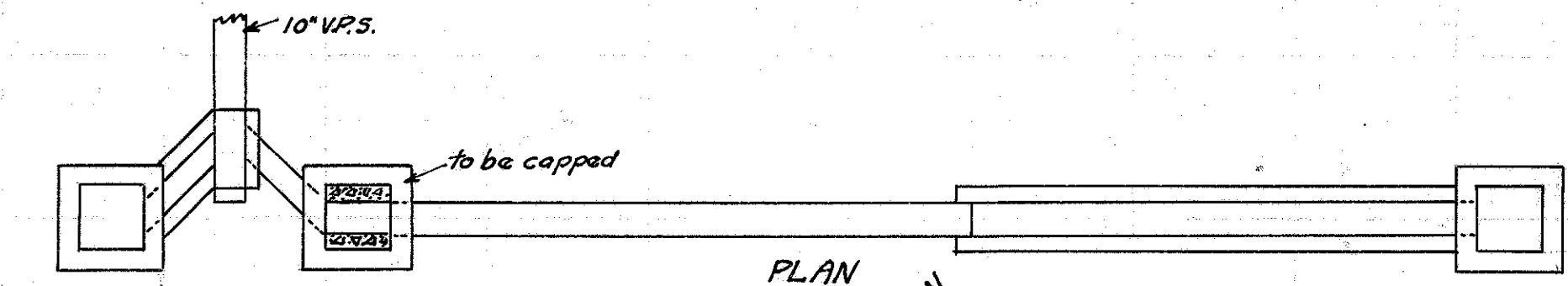


49

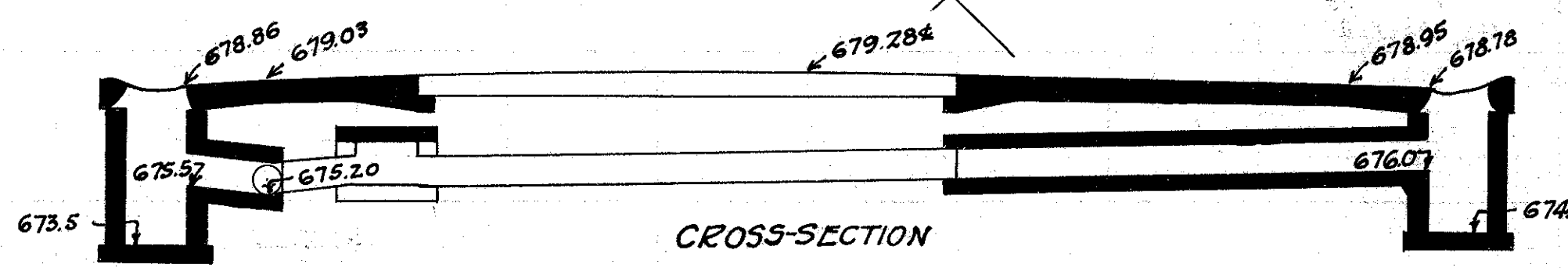


CULVERT DATA
Type: Std. V.S.P. culvert Dr. #300
Size: 10' x 18'
Work Req.: Extend pres. culv. to R with 10' x 16' Std. V.P. enc. culvert.
Build C.B. R+L. On L connect to pres. sewer with 10' x 2' V.P. enc.
Cap old I.B. on L.
Drawn by: Beebe + Plummer
Date: 2-26-29

EST. QUANTITIES.
Exc. 4.8 cu.yds.
Con. 1-8 1.79 cu.yds.
Con. 1-5 1/2 (precast cap) 0.2 cu.yds.
Reinf. Steel 22 lbs.
10' V.P. 18 lin.ft.
C.B. (old covers reset) (Rdwy) 2
Sta. 396+68

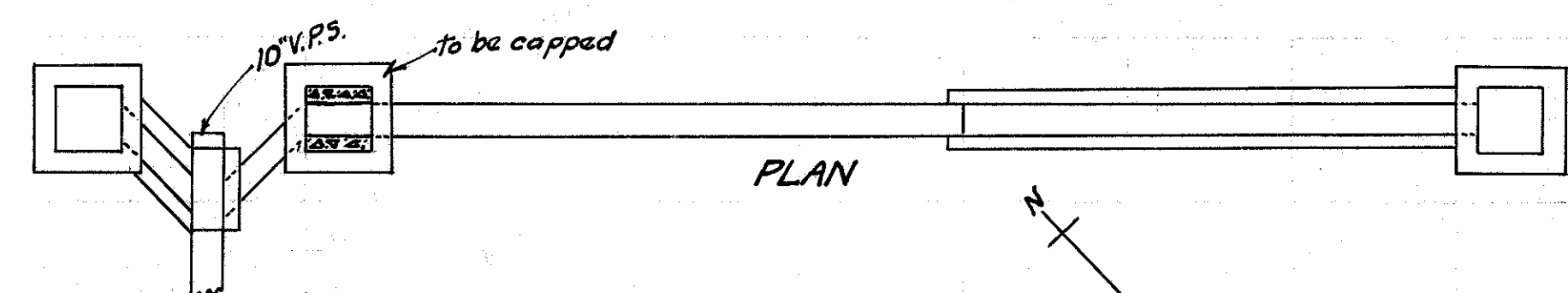


50

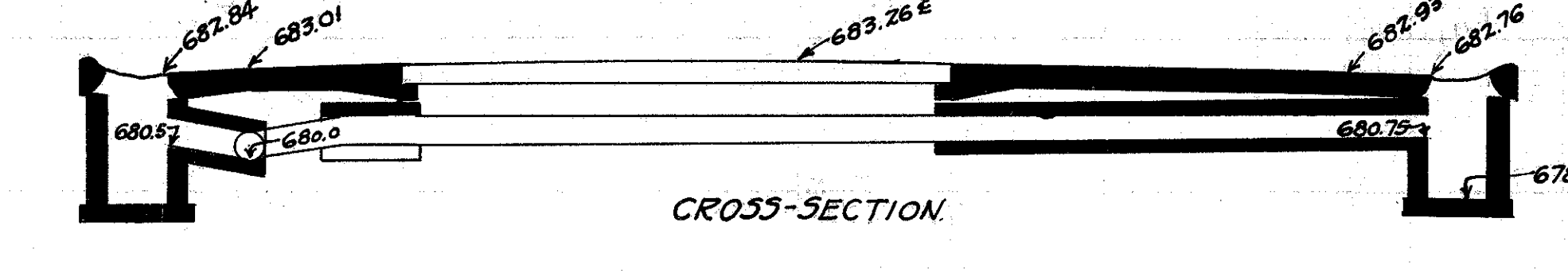


CULVERT DATA
Type: Std. V.S.P. culvert Dr. #300
Size: 10' x 18'
Work Req.: Extend pres. culv. to R with 10' x 16' Std. V.P. enc. culvert.
Build C.B. R+L. On L connect to pres. sewer with 10' x 2' V.P. enc.
Cap old I.B. on L.
Drawn by: Beebe + Plummer
Date: 2-26-29

EST. QUANTITIES.
Exc. 5.9 cu.yds.
Con. 1-8 1.79 cu.yds.
Con. 1-5 1/2 (precast cap) 0.2 cu.yds.
Reinf. Steel 22 lbs.
10' V.P. 18 lin.ft.
C.B. (old covers reset) (Rdwy) 2
Sta. 420+77

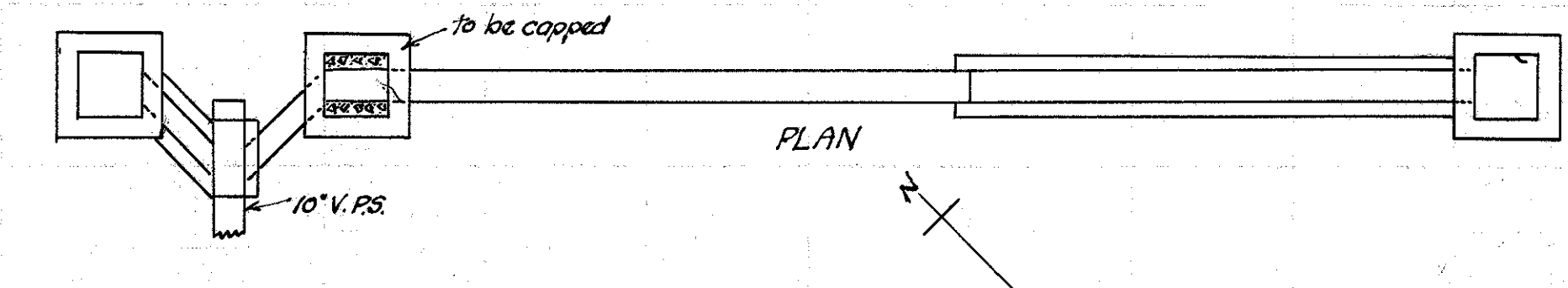


48

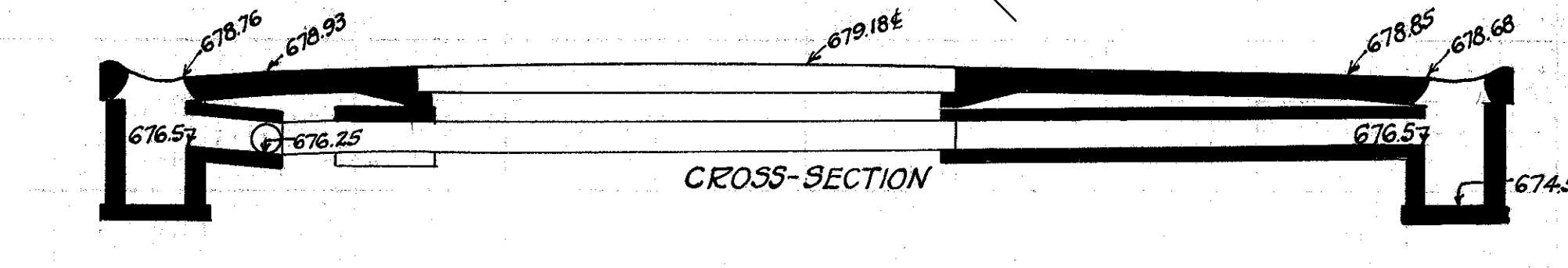


CULVERT DATA
Type: Std. V.S.P. culvert Dr. #300
Size: 10' x 18'
Work Req.: Extend pres. culv. to R with 10' x 16' Std. V.P. enc. culvert.
Build C.B. R+L. On L connect to pres. sewer with 10' x 2' V.P. enc.
Cap old I.B. on L.
Drawn by: Beebe + Plummer.
Date: 2-26-28

EST. QUANTITIES
Exc. 3.3 cu.yds.
Con. 1-8 1.79 cu.yds.
Con. 1-5 1/2 (precast cap) 0.2 cu.yds.
Reinf. Steel 22 lbs.
10' V.P. 18 lin.ft.
C.B. (old covers reset) (Rdwy) 2
Sta. 392+78

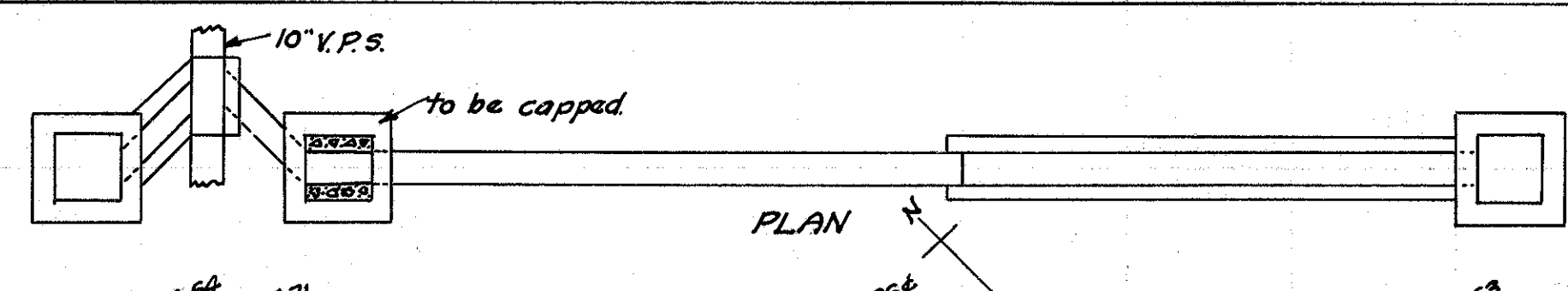


51

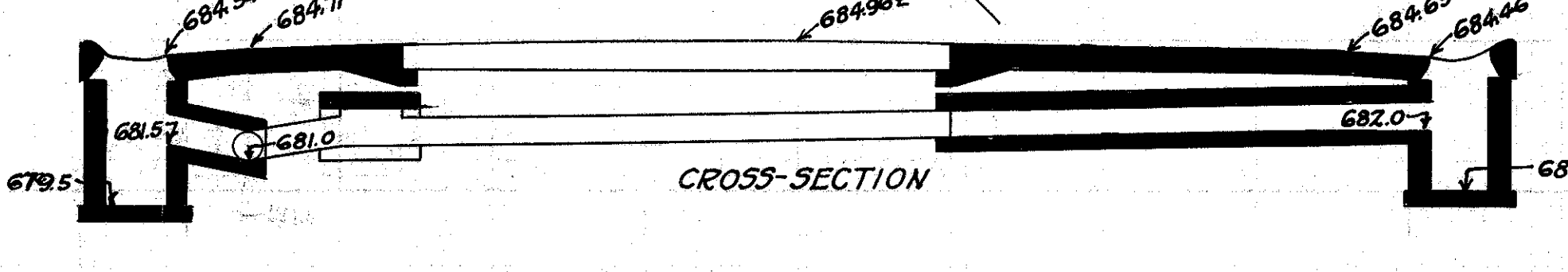


CULVERT DATA
Type: Std. V.S.P. culvert Dr. #300
Size: 10' x 18'
Work Req.: Extend pres. culv. to R with 10' x 16' Std. V.P. enc. culvert.
Build C.B. R+L. On L connect to pres. sewer with 10' x 2' V.P. enc.
Cap old I.B. on L.
Drawn by: Beebe + Plummer
Date: 2-26-29

EST. QUANTITIES.
Exc. 3.7 cu.yds.
Con. 1-8 1.79 cu.yds.
Con. 1-5 1/2 (precast cap) 0.2 cu.yds.
Reinf. Steel 22 lbs.
10' V.P. 18 lin.ft.
C.B. (old covers reset) (Rdwy) 2
Sta. 407+86

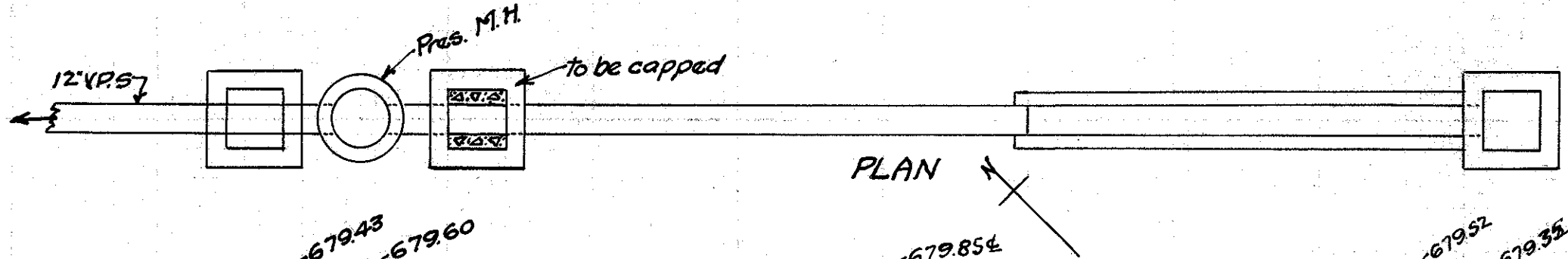


47

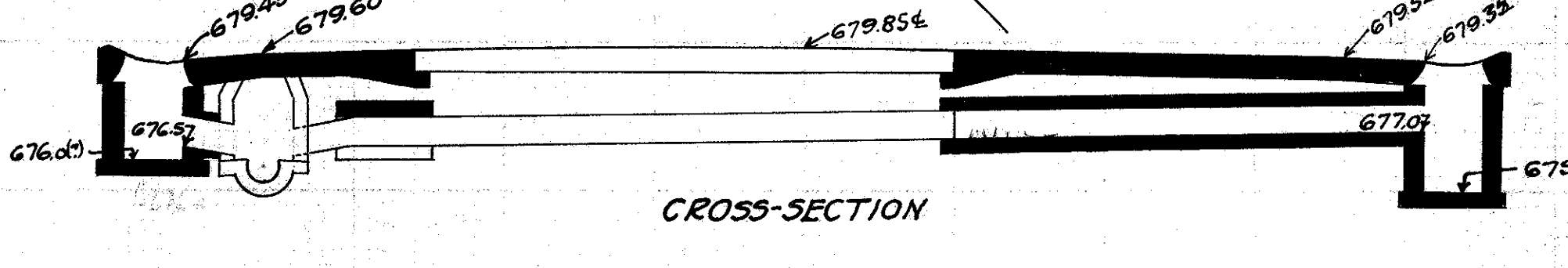


CULVERT DATA
Type: Std. V.S.P. culvert Dr. #300
Size: 10' x 18'
Work Req.: Extend pres. culv. to R with 10' x 16' Std. V.P. enc. culvert.
Build C.B. R+L. On L connect to pres. sewer with 10' x 2' V.P. enc.
Cap old I.B. on L.
Drawn by: Beebe + Plummer.
Date: 2-26-29

EST. QUANTITIES.
Exc. 4.2 cu.yds.
Con. 1-8 1.79 cu.yds.
Con. 1-5 1/2 (precast cap) 0.2 cu.yds.
Reinf. Steel 22 lbs.
10' V.P. 18 lin.ft.
C.B. (old covers reset) (Rdwy) 2
Sta. 387+16



50



CULVERT DATA
Type: Std. V.S.P. culvert Dr. #300
Size: 10' x 18'
Work Req.: Extend pres. culv. to R with 10' x 16' Std. V.P. enc. culvert.
Build C.B. R+L. On L connect to present M.H. with 2' x 10' V.P.
Cap old I.B. on L.
Drawn by: Beebe + Plummer
Date: 2-26-29

EST. QUANTITIES.
Exc. 3.4 cu.yds.
Con. 1-8 1.46 cu.yds.
Con. 1-5 1/2 (precast cap) 0.2 cu.yds.
Reinf. Steel 22 lbs.
10' V.P. 18 lin.ft.
C.B. (old covers reset) (Rdwy) 2
Sta. 404+84.