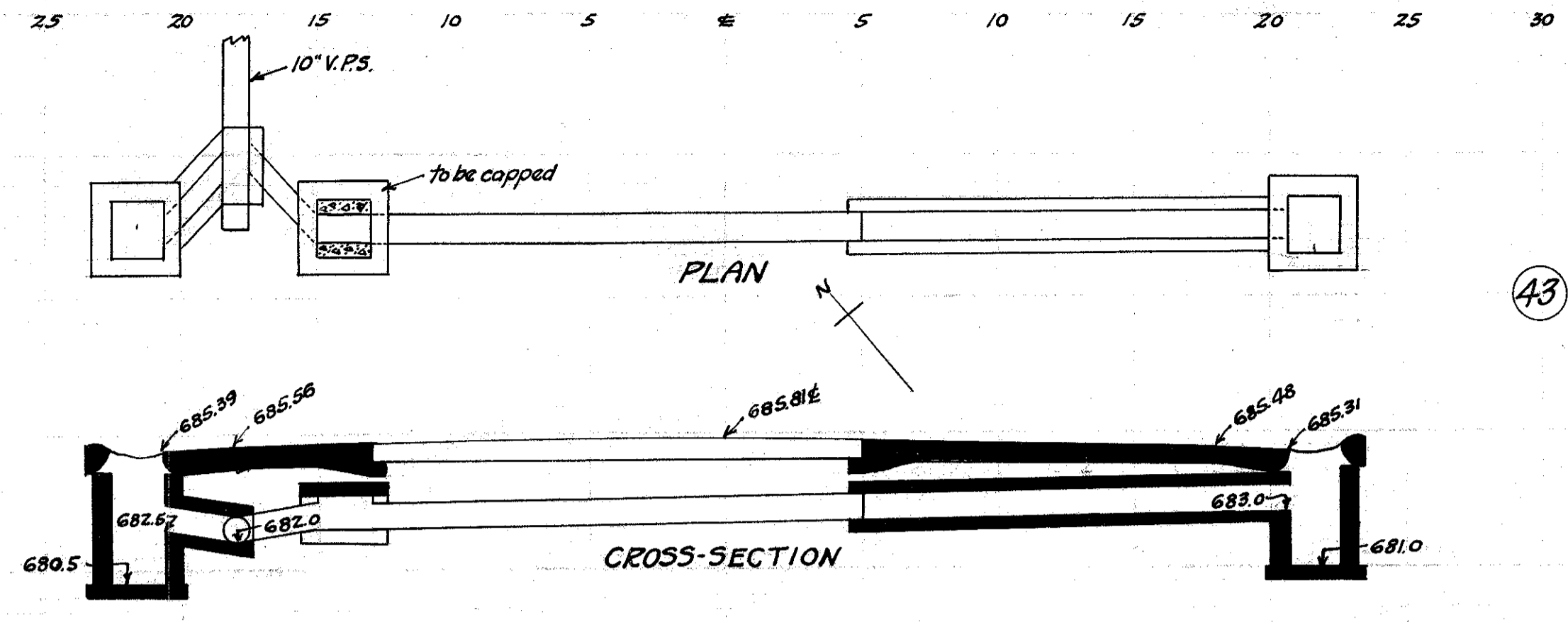


FED. RD. DIST. NO.	STATE	FED. AID PROJECT	FISCAL YEAR	49
10	OHIO	519C	1929	52

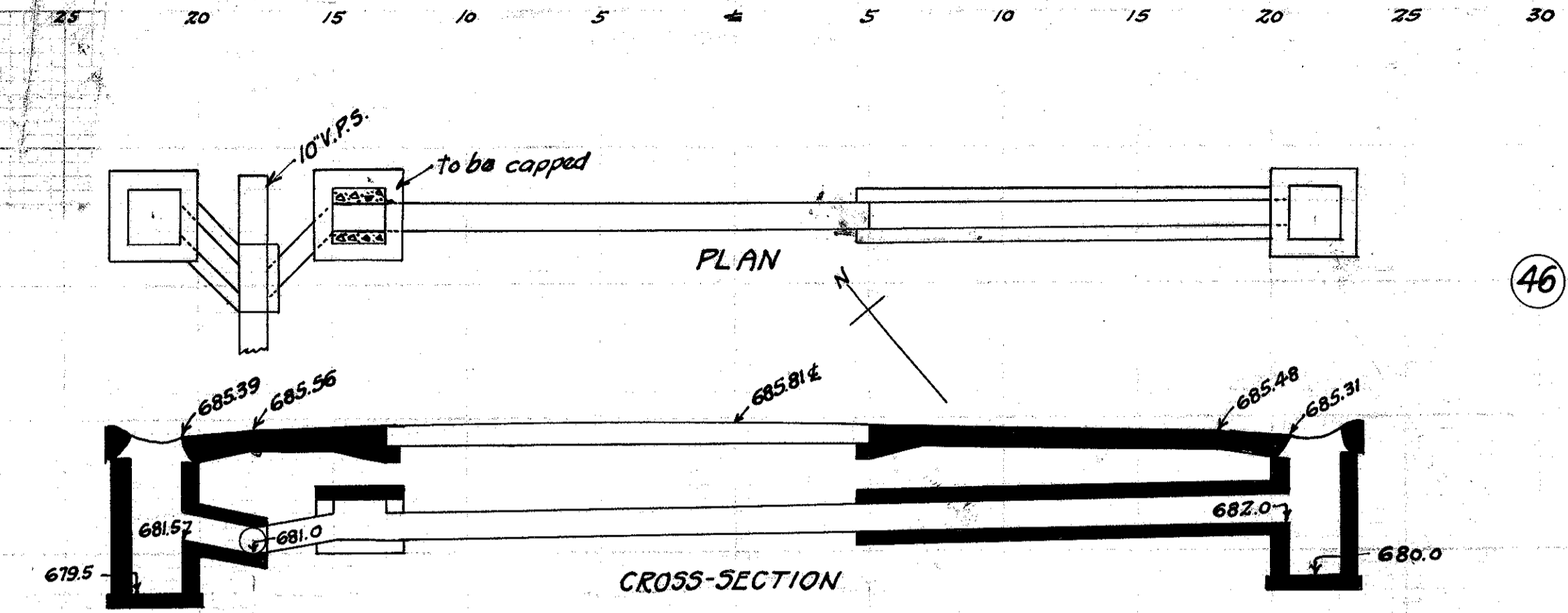
SH. N°2 Sec. 6, H₁ + Mantor
LAKE COUNTY.



CULVERT DATA
Type: Std. V.S.P. culvert Dr. #300
Size: 10' x 18'
Work Req.: Extend pres. culv. to R with 10' x 16' Std. V.P. enc. culvert.
Build C.B. R+L. On L connect to pres. sewer with 10' x 2' V.P. enc.
Cap old I.B. on L.
Drawn by: Beebe + Plummer
Date: 2-25-29

EST. QUANTITIES

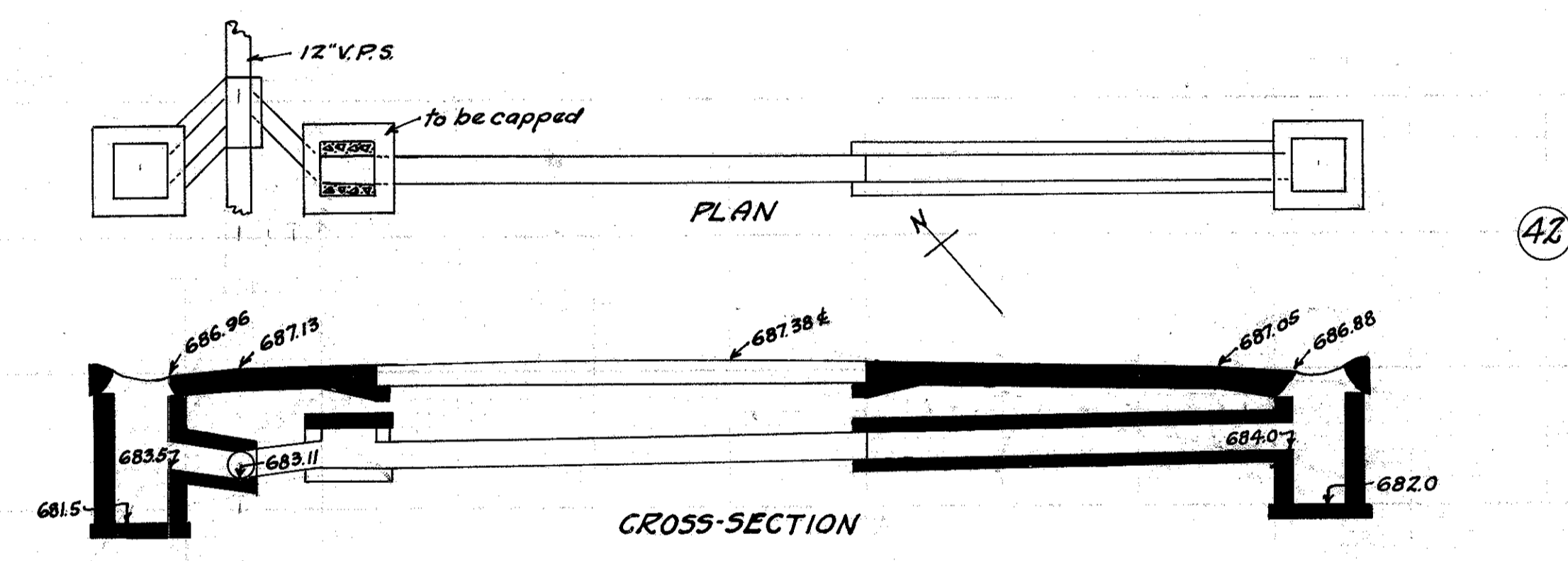
Exc.	4.7	cu. yds.
Con. 1-8	1.79	cu. yds.
Con. 1-5/2 (precast cap)	0.2	cu. yds.
Reinf. Steel	22	lbs.
10" V.P.	18	lin. ft.
C.B. (old covers reset) (Rdwy)	2	
Sta.	362+63	



CULVERT DATA
Type: Std. V.S.P. culvert Dr. #300
Size: 10' x 18'
Work Req.: Extend pres. culv. to R with 10' x 16' Std. V.P. enc. culvert.
Build C.B. R+L. On L connect to pres. sewer with 10' x 2' V.P. enc.
Cap old I.B. on L.
Drawn by: Beebe + Plummer
Date: 2-25-29

EST. QUANTITIES

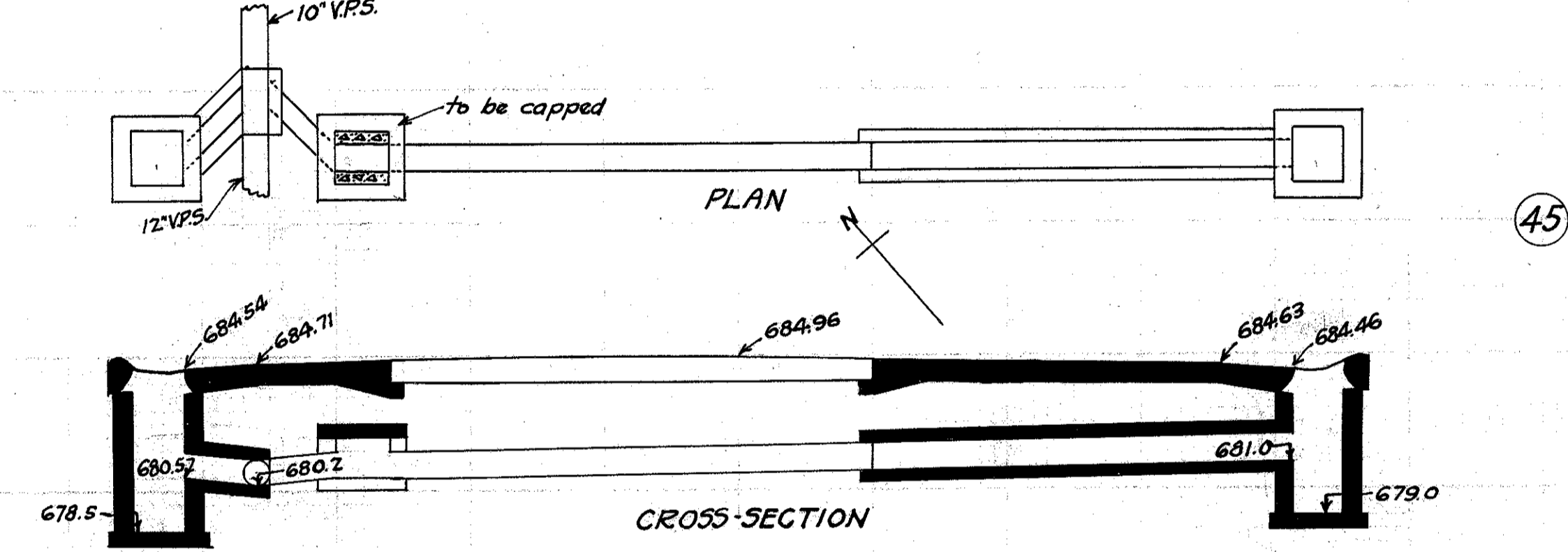
Exc.	4.6	cu. yds.
Con. 1-8	1.79	cu. yds.
Con. 1-5/2 (precast cap)	0.2	cu. yds.
Reinf. Steel	22	lbs.
10" V.P.	18	lin. ft.
C.B. (old covers reset) (Rdwy)	2	
Sta.	376+64	



CULVERT DATA
Type: Std. V.S.P. culvert Dr. #300
Size: 10' x 18'
Work Req.: Extend pres. culv. to R with 10' x 16' Std. V.P. enc. culvert.
Build C.B. R+L. On L connect to pres. sewer with 10' x 2' V.P. enc.
Cap old I.B. on L.
Drawn by: Beebe + Plummer
Date: 2-25-29

EST. QUANTITIES

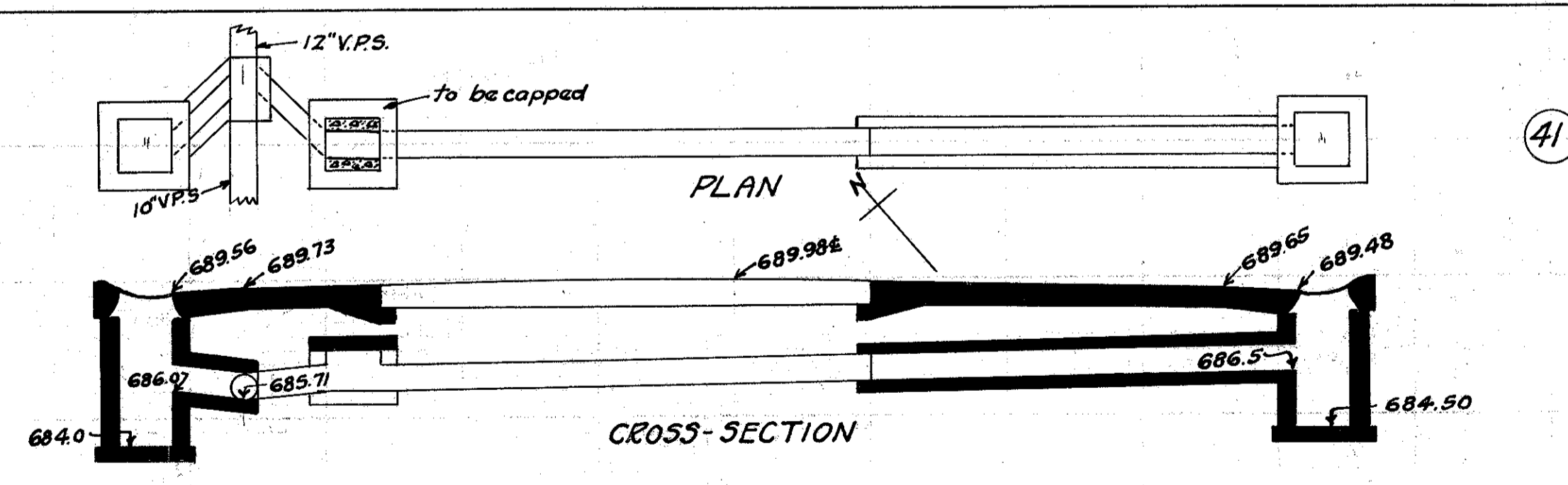
Exc.	4.0	cu. yds.
Con. 1-8	1.79	cu. yds.
Con. 1-5/2 (precast cap)	0.2	cu. yds.
Reinf. Steel	22	lbs.
10" V.P.	18	lin. ft.
C.B. (old covers reset) (Rdwy)	2	
Sta.	356+61	



CULVERT DATA
Type: Std. V.S.P. culvert Dr. #300
Size: 10' x 18'
Work Req.: Extend pres. culv. to R with 10' x 16' Std. V.P. enc. culvert.
Build C.B. R+L. On L connect to pres. sewer with 10' x 2' V.P. enc.
Cap old I.B. on L.
Drawn by: Beebe + Plummer
Date: 2-25-29

EST. QUANTITIES

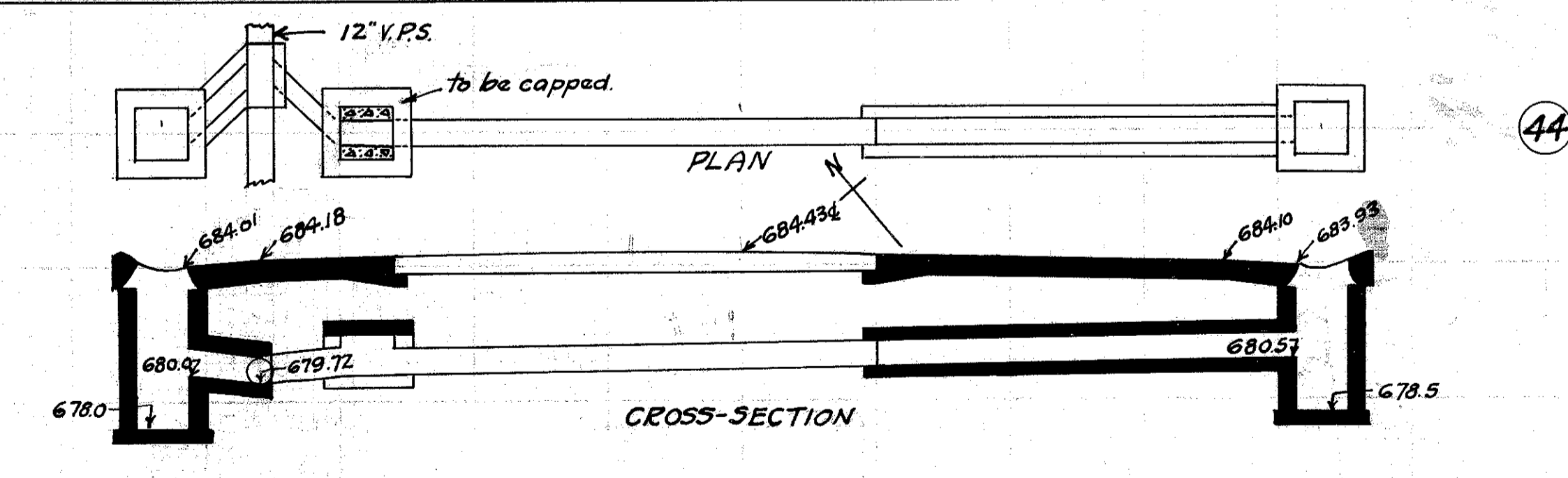
Exc.	6.0	cu. yds.
Con. 1-8	1.79	cu. yds.
Con. 1-5/2 (precast cap)	0.2	cu. yds.
Reinf. Steel	22	lbs.
10" V.P.	18	lin. ft.
C.B. (old covers reset) (Rdwy)	2	
Sta.	371+63	



CULVERT DATA
Type: Std. V.S.P. culvert Dr. #300
Size: 10' x 18'
Work Req.: Extend pres. culv. to R with 10' x 16' Std. V.P. enc. culvert.
Build C.B. R+L. On L connect to pres. sewer with 10' x 2' V.P. enc.
Cap old I.B. on L.
Drawn by: Beebe + Plummer
Date: 2-25-29

EST. QUANTITIES

Exc.	5.0	cu. yds.
Con. 1-8	1.79	cu. yds.
Con. 1-5/2 (precast cap)	0.2	cu. yds.
Reinf. Steel	22	lbs.
10" V.P.	18	lin. ft.
C.B. (old covers reset) (Rdwy)	2	
Sta.	351+62	



CULVERT DATA
Type: Std. V.S.P. culvert Dr. #300
Size: 10' x 18'
Work Req.: Extend pres. culv. to R with 10' x 16' Std. V.P. enc. culvert.
Build C.B. R+L. On L connect to present sewer with 10' x 2' V.P. enc. Cap old I.B. on L.
Drawn by: Beebe + Plummer
Date: 2-25-29

EST. QUANTITIES

Exc.	5.2	cu. yds.
Con. 1-8	1.79	cu. yds.
Con. 1-5/2 (precast cap)	0.2	cu. yds.
Reinf. Steel	22	lbs.
10" V.P.	18	lin. ft.
C.B. (old covers reset) (Rdwy)	2	
Sta.	368+14	