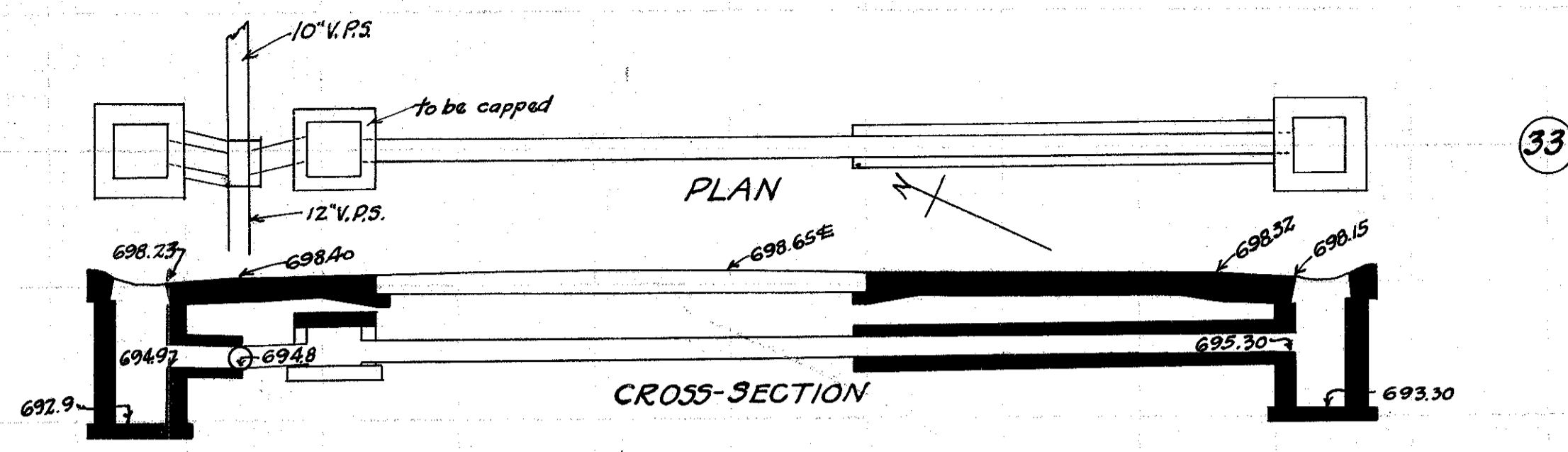


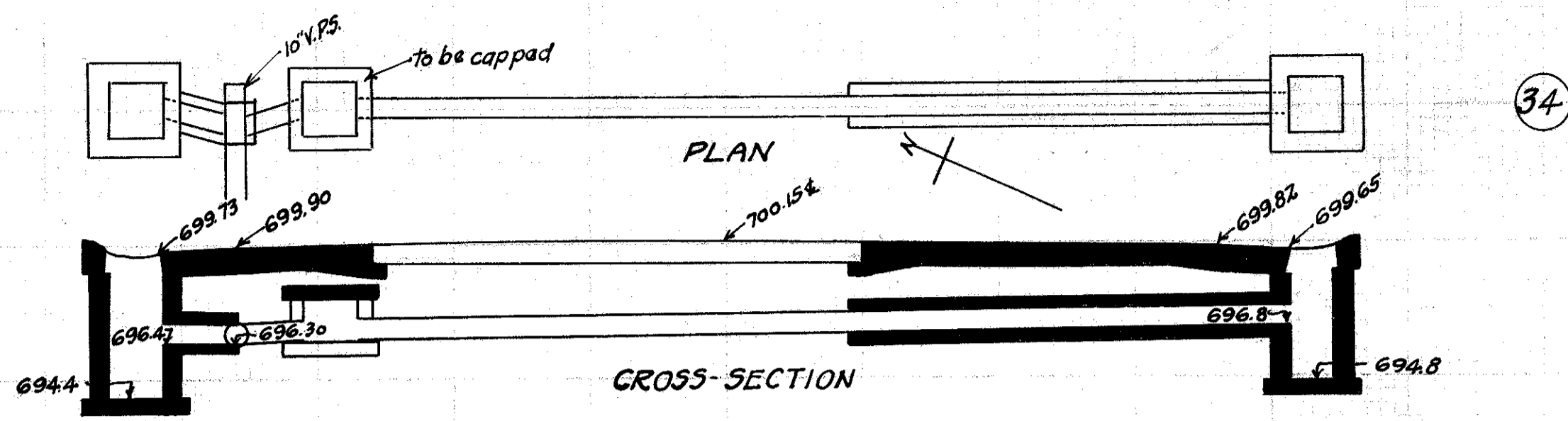
FED. RD DIST. NO	STATE	FED. AID PROJECT	FISCAL YEAR	47
10	OHIO	519C	1929	52

SH. N. 2 Sec. G, H, + Mentor LAKE COUNTY.



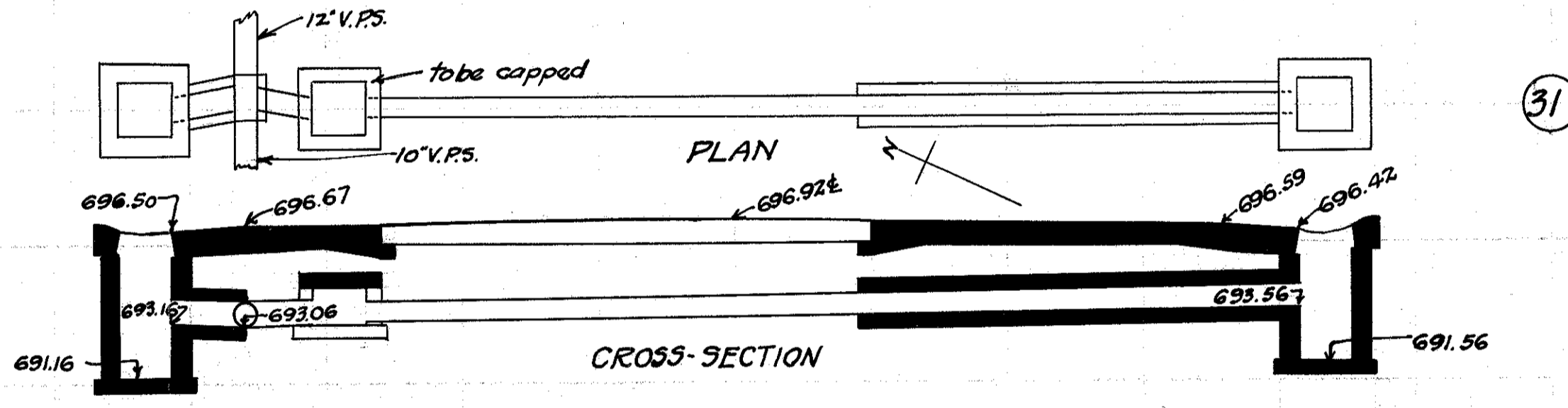
CULVERT DATA
 Type: Std. V.S.P. culvert Dr. #300
 Size: 10' x 18'
 Work Req: Extend pres. culv. to R with 10' x 16' Std. V.P. enc. culvert.
 Build C.B. R+L. On L. connect to pres. sewer with 10' x 2' V.P. enc.
 Cap old I.B. on L.
 Drawn by: Beebe + Plummer
 Date: 2-23-29

EST. QUANTITIES
 Exc. 5.3 cu. yds.
 Con. 1-8 1.69 cu. yds.
 Con. 1-5 1/2 (precast cap) 0.2 cu. yds.
 Reinf. Steel 22 lbs.
 10' V.P. 18 lin. ft.
 C.B. (old covers reset) (Relay) 2
 Sta. 302+97



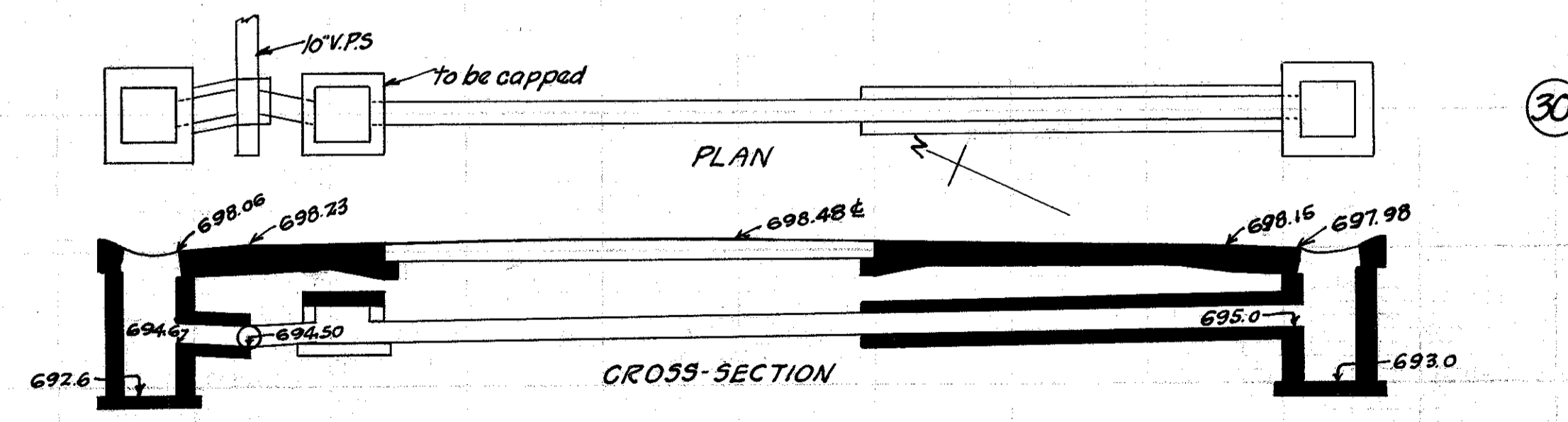
CULVERT DATA
 Type: Std. V.S.P. culvert Dr. #300.
 Size: 10' x 18'
 Work Req: Extend pres. culv. to R with 10' x 16' Std. V.P. enc. culvert.
 Build C.B. R+L. On L. connect to pres. sewer with 10' x 2' V.P. enc.
 Cap old I.B. on L.
 Drawn by: Beebe + Plummer.
 Date: 2-23-29

EST. QUANTITIES
 Exc. 4.9 cu. yds.
 Con. 1-8 1.69 cu. yds.
 Con. 1-5 1/2 (precast cap) 0.2 cu. yds.
 Reinf. Steel 22 lbs.
 10' V.P. 18' lin. ft.
 C.B. (old covers reset) (Relay) 2
 Sta. 307+95



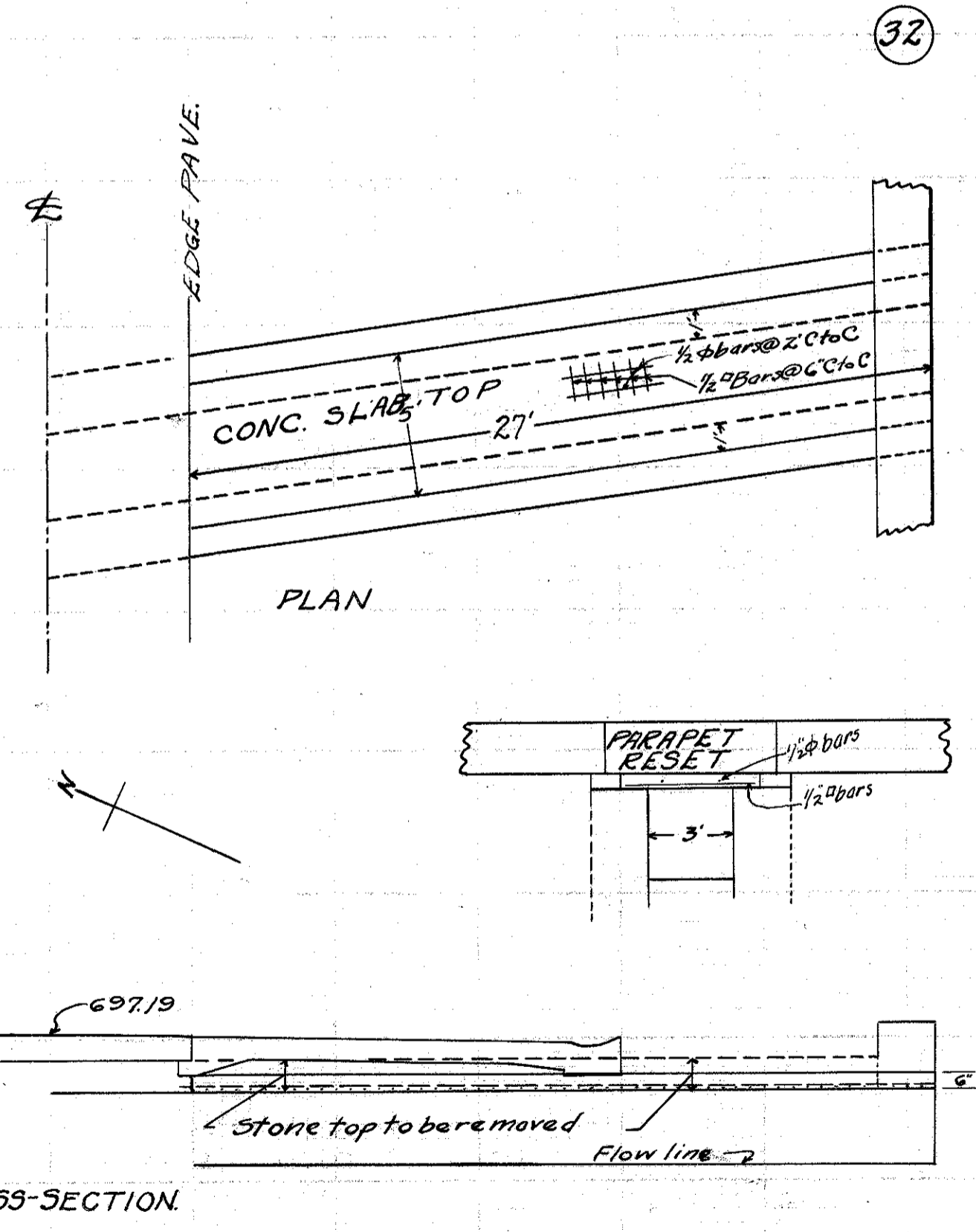
CULVERT DATA
 Type: Std. V.S.P. culvert Dr. #300
 Size: 10' x 18'
 Work Req: Extend pres. culv. to R with 10' x 16' Std. V.P. enc. culvert.
 Build C.B. R+L. On L. connect to pres. sewer with 10' x 2' V.P. enc.
 Cap old I.B. on L.
 Drawn by: Beebe + Plummer
 Date: 2-23-29

EST. QUANTITIES
 Exc. 5.1 cu. yds.
 Con. 1-8 1.69 cu. yds.
 Con. 1-5 1/2 (precast cap) 0.2 cu. yds.
 Reinf. Steel 22 lbs.
 10' V.P. 18 lin. ft.
 C.B. (old covers reset) (Relay) 2
 Sta. 296+96



CULVERT DATA
 Type: Std. V.S.P. culvert Dr. #300
 Size: 10' x 18'
 Work Req: Extend pres. culv. to R with 10' x 16' Std. V.P. enc. culvert.
 Build C.B. R+L. On L. connect to pres. sewer with 10' x 2' V.P. enc.
 Cap old I.B. on L.
 Drawn by: Beebe + Plummer.
 Date: 2-23-29

EST. QUANTITIES
 Exc. 4.8 cu. yds.
 Con. 1-8 1.69 cu. yds.
 Con. 1-5 1/2 (precast cap) 0.2 cu. yds.
 Reinf. Steel 22 lbs.
 10' V.P. 18 lin. ft.
 C.B. (old covers reset) (Relay) 2
 Sta. 290+97



CULVERT DATA
 Type: Reinf. conc. slab top.
 Size: 5' x 6' x 27'
 Work Req: Remove stone top of pres. stone box culvert and build 5' x 6' x 27' slab top. Reset parapet stone on R.
 Drawn by: Beebe + Plummer
 Date: 2-23-29

EST. QUANTITIES
 Con. 1-5 1/2 2.5 cu. yds.
 Reinf. Steel 254 lbs.
 Stone Masonry Removed 3.5 cu. yds.
 Parapet Stone reset (Relay) 1.
 Sta. 297+95