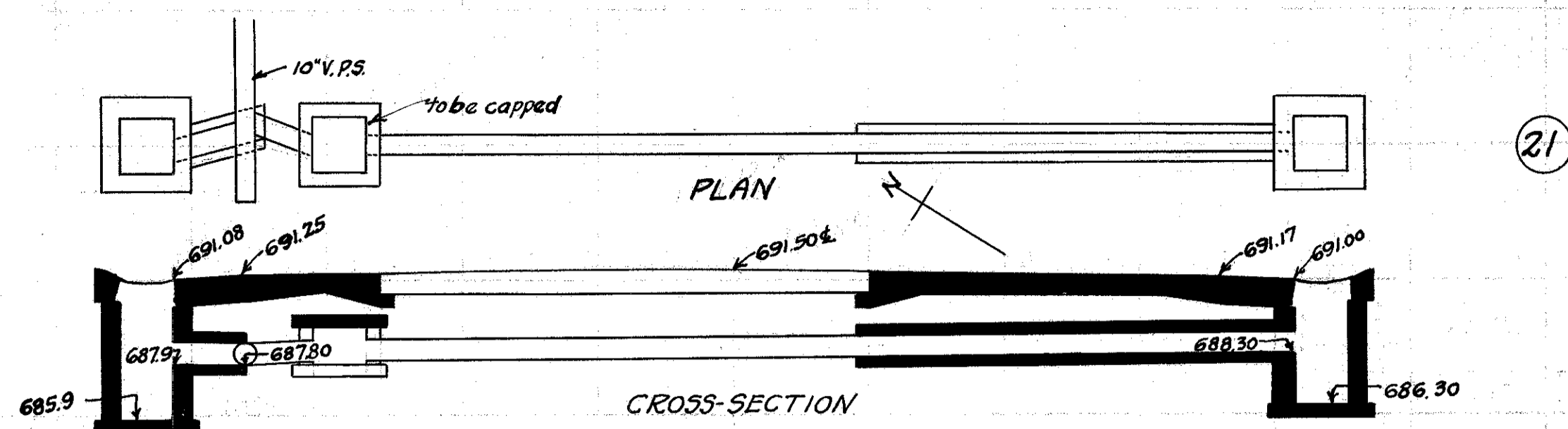


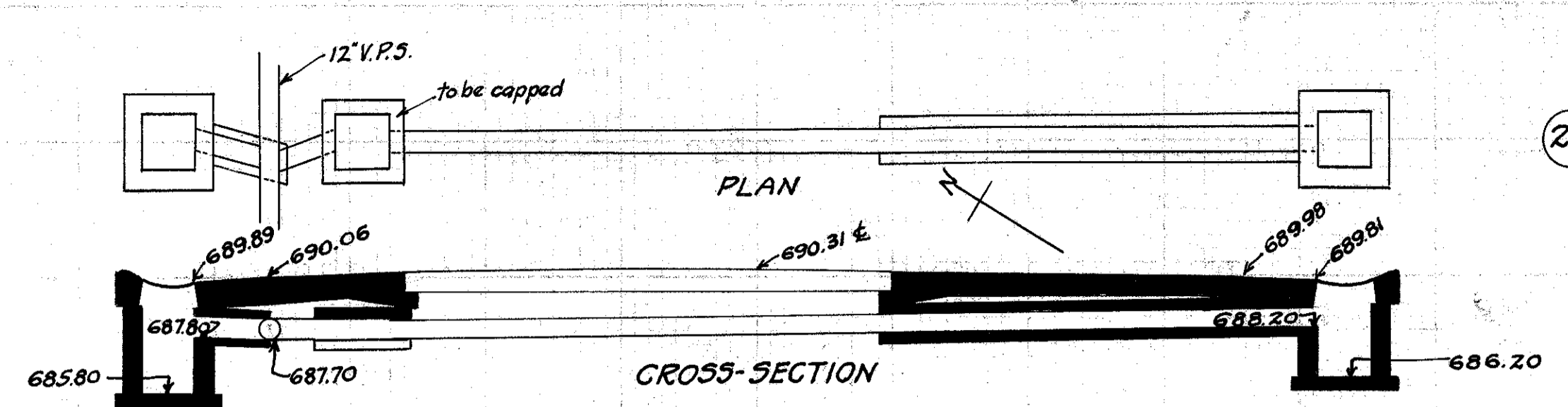
FED. RD. DIST. NO.	STATE	FED. AID PROJECT	FISCAL YEAR	45
10	OHIO	519C	1929	52

S.H. No. 2 Sec. G, H, + Mentor  
LAKE COUNTY.



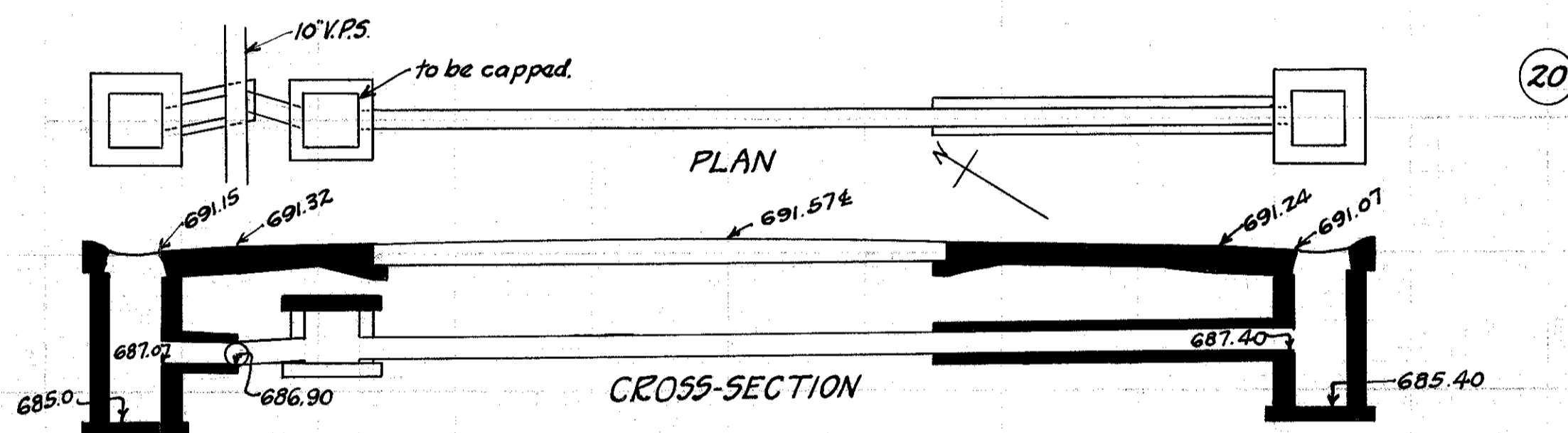
**CULVERT DATA**  
Type: Std. V.S.P. culvert Dr. #300  
Size: 10' x 20'  
Work Req.: Extend pres. culv. to R with 10' x 16' Std. V.P. enc. culvert.  
Build C.B. R+L. On L. connect to pres. sewer with 10' x 4' V.P. enc.  
Cap old I.B. on L.  
Drawn by: Beebe + Plummer. Checked by: \_\_\_\_\_  
Date: 2-21-29 Date: \_\_\_\_\_

**EST. QUANTITIES**  
Exc. 5.1 cu. yds.  
Con. 1-8 1.69 cu. yds.  
Con. 1-5/2 0.2 cu. yds.  
Reinf. Steel 22 lbs.  
10' V.P. 20 lin. ft.  
C.B. (old covers reset) (Rd.) 2  
Sta. 239+99



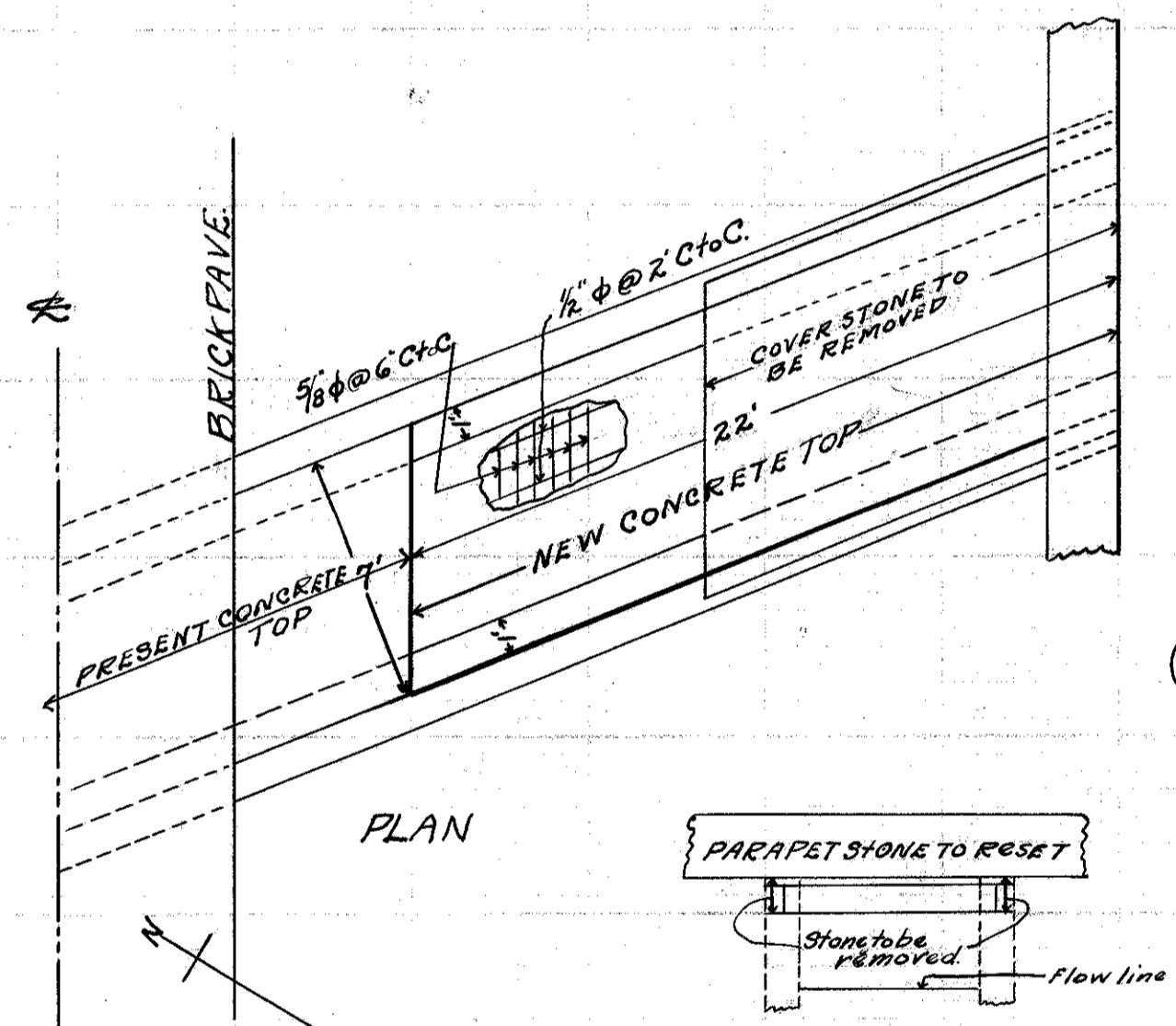
**CULVERT DATA**  
Type: Std. V.S.P. culvert Dr. #300  
Size: 10' x 18'  
Work Req.: Extend pres. culv. to R with 10' x 16' Std. V.P. enc. culvert  
Build C.B. R+L. On L. connect to pres. sewer with 10' x 2' V.P. enc.  
Cap old I.B. on L.  
Drawn by: Beebe + Plummer. Checked by: \_\_\_\_\_  
Date: 2-21-29 Date: \_\_\_\_\_

**EST. QUANTITIES**  
Exc. 3.0 cu. yds.  
Con. 1-8 1.69 cu. yds.  
Con. 1-5/2 (precast cap) 0.2 cu. yds.  
Reinf. Steel 22 lbs.  
10' V.P. 18 lin. ft.  
C.B. (old covers reset) (Rd.) 2  
Sta. 244+88



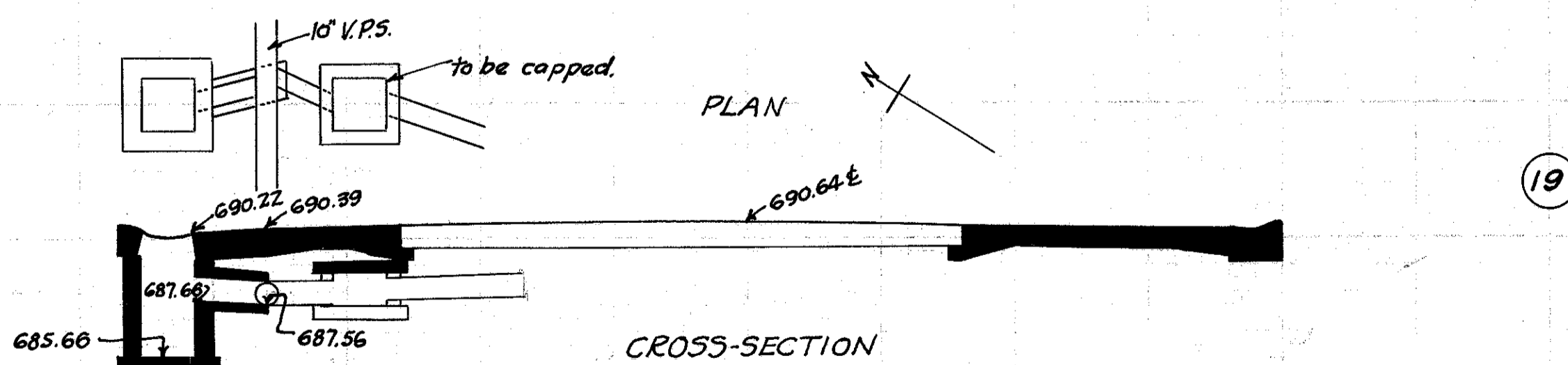
**CULVERT DATA**  
Type: Std. V.S.P. culvert Dr. #300  
Size: 10' x 18'  
Work Req.: Extend pres. culv. to R with 10' x 14' Std. V.P. enc. culvert.  
Build C.B. R+L. On L. connect to pres. sewer with 10' x 4' V.P. enc.  
Cap old I.B. on L.  
Drawn by: Beebe + Plummer. Checked by: \_\_\_\_\_  
Date: 2-21-29 Date: \_\_\_\_\_

**EST. QUANTITIES**  
Exc. 4.5 cu. yds.  
Con. 1-8 1.41 cu. yds.  
Con. 1-5/2 (precast cap) 0.2 cu. yds.  
Reinf. Steel 22 lbs.  
10' V.P. 18 lin. ft.  
C.B. (old covers reset) (Rd.) 2  
Sta. 230+49



**CULVERT DATA**  
Type: Slab Top  
Size: 7' x 22'  
Work Req.: Remove 1 course of stone masonry. Build conc. slab top on pres. walls.  
Reset parapet stone.  
Drawn by: Beebe + Plummer. Checked by: \_\_\_\_\_  
Date: 2-21-29 Date: \_\_\_\_\_

**EST. QUANTITIES**  
Con. 1-5/2 38 cu. yds.  
Reinf. Steel 321 lbs.  
Stone Masonry Removed 6.5 Cu. yds.  
Parapet Stone Reset (Rd.) 1  
Sta. 241+50



**CULVERT DATA**  
Type: Std. V.S.P. culvert Dr. #300  
Size: 10' x 4'  
Work Req.: Build C.B. 20 ft to L. of E and connect to pres. sewer with 10' x 4' Std. V.P. enc. Cap old I.B. on L.  
Drawn by: Beebe + Plummer. Checked by: \_\_\_\_\_  
Date: 2-21-29 Date: \_\_\_\_\_

**EST. QUANTITIES**  
Exc. 0.5 cu. yds.  
Con. 1-8 0.47 cu. yds.  
Con. 1-5/2 (precast cap) 0.2 cu. yds.  
Reinf. Steel 22 lbs.  
10' V.P. 4 lin. ft.  
C.B. (old covers reset) (Rd.) 2  
Sta. 227+22