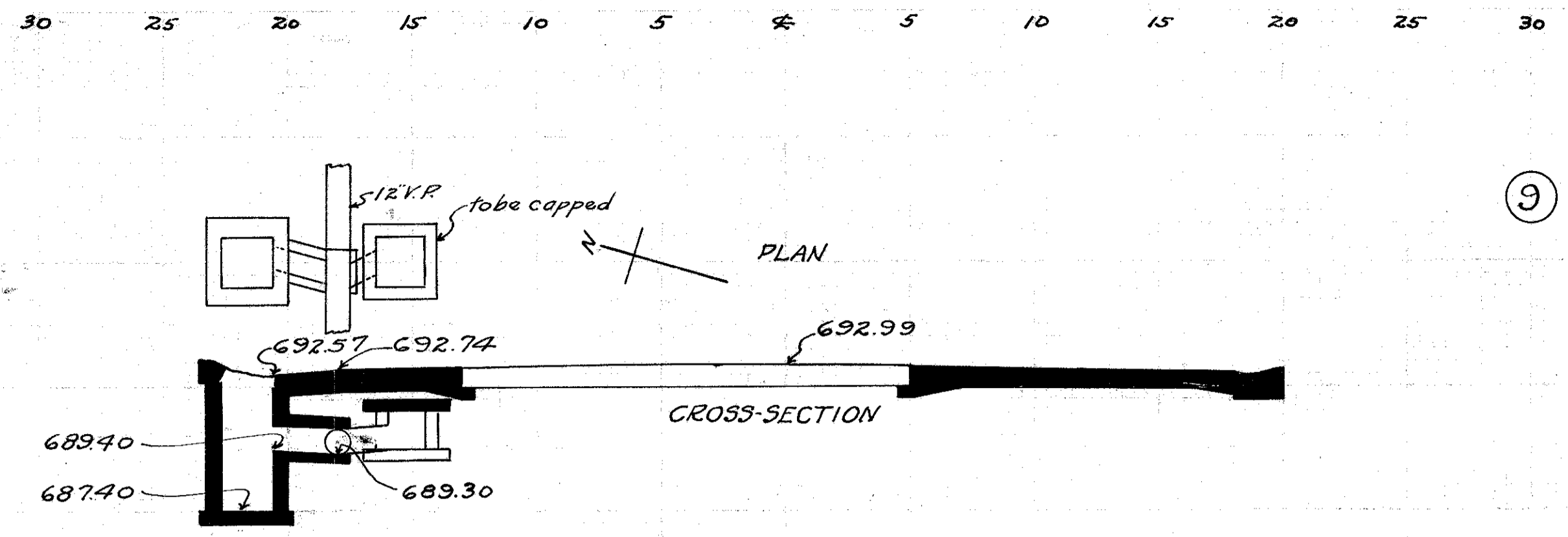


FED. RD. DIST. NO.	STATE	FED. AID PROJECT	FISCAL YEAR	43
10	OHIO	519C	1929	52

S.H. No 2 Sec. G, H, & Mentor LAKE COUNTY.

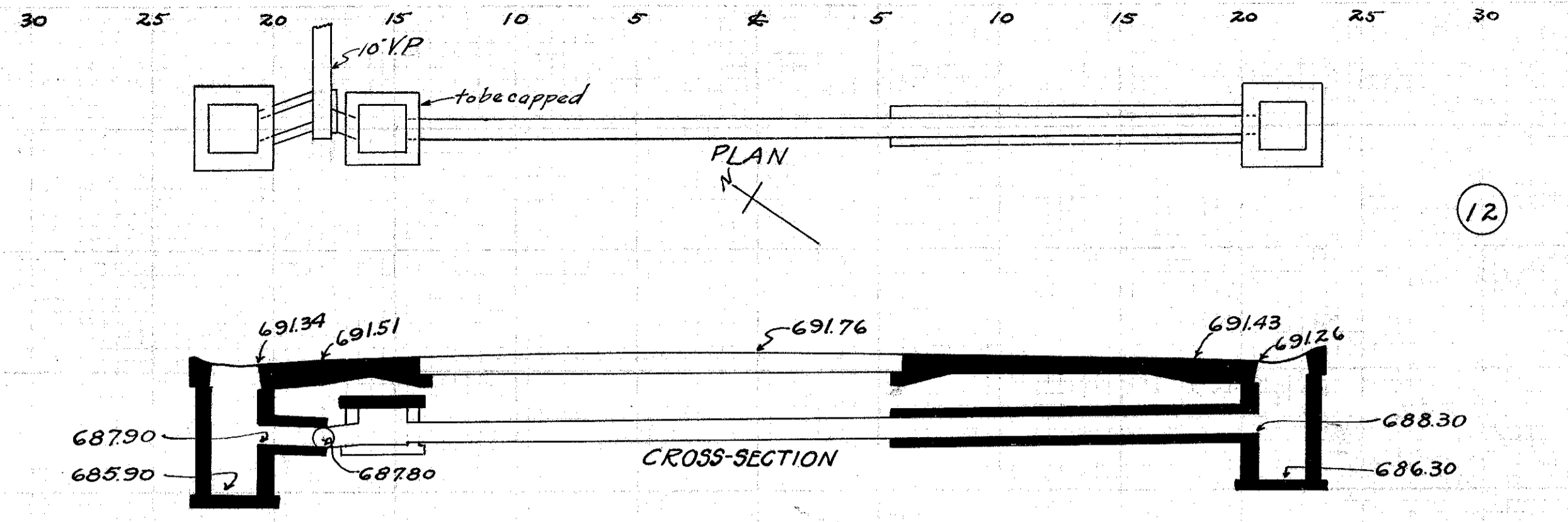


CULVERT DATA
 Type Std. V.S. Penc. Dr. #300
 Size 10'x4'
 Work Req: Build C.B. on L. Connect to sewer on L. with 10'x4' V.Penc. Cap old I.B. on L.

Drawn by Beebe & Plummer Checked by Date
 Date 2-18-29

EST QUANTITIES
 Exc. .60 cu. yds.
 Con. 1-8 .22 cu. yds.
 Con. 1-5 1/2 (precast cap) .02 cu. yds.
 Reinf. Steel .22 lbs.
 10' V.P. 4 lin. ft.
 C.B. (old covers reset) (Rwy) 1

Sta. 194+99



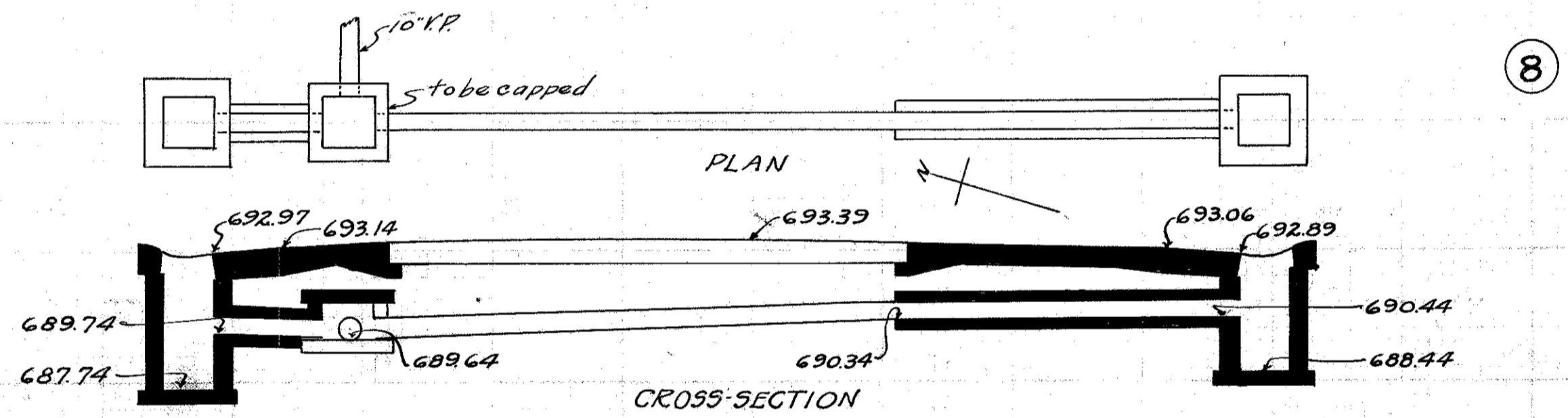
CULVERT DATA
 Type Std. V.S. Penc. Dr. #300
 Size 10'x18'

Work Req: Extend present culv. to R. with 10'x14' V.Penc. Build C.B. on R & L. On L. connect to present sewer with 10'x4' V.Penc. Cap old I.B. on L.

Drawn by Beebe & Plummer Checked by Date
 Date 2-18-29

EST QUANTITIES
 Exc. .12 cu. yds.
 Con. 1-8 .17 cu. yds.
 Con. 1-5 1/2 (precast cap) .02 cu. yds.
 Reinf. Steel .22 lbs.
 10' V.P. 18 lin. ft.
 C.B. (old covers reset) (Rwy) 2

Sta. 206+98



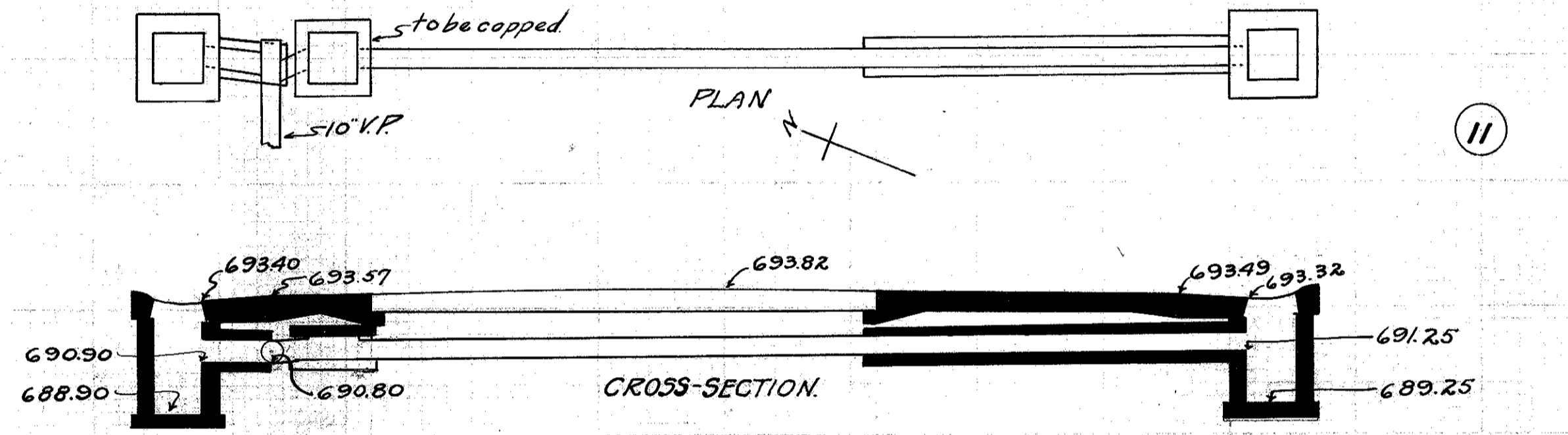
CULVERT DATA
 Type Std. V.S. Penc. Dr. #300
 Size 10'x18'

Work Req: Extend present culv. to R. with 10'x14' V.Penc. culv. Build C.B. on R & L. On L. connect to present sewer with 10'x4' V.Penc. Cap old I.B. on L.

Drawn by Beebe & Plummer Checked by Date
 Date 2-18-29

EST QUANTITIES
 Exc. .39 cu. yds.
 Con. 1-8 .15 cu. yds.
 Con. 1-5 1/2 (precast cap) .02 cu. yds.
 Reinf. Steel .22 lbs.
 10' V.P. 18 lin. ft.
 C.B. (old covers reset) (Rwy) 2

Sta. 193+99



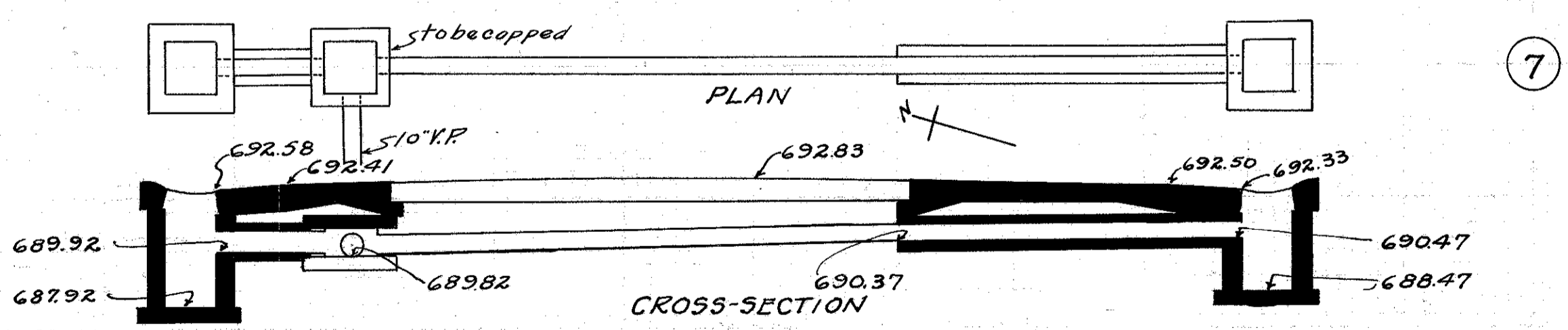
CULVERT DATA
 Type Std. V.S. Penc. Dr. #300
 Size 10'x18'

Work Req: Extend present culv. to R. with 10'x14' V.Penc. culv. Build C.B. on R & L. On L. connect to present sewer with 10'x4' V.Penc. Cap old I.B. on L.

Drawn by Beebe & Plummer Checked by Date
 Date 2-18-29

EST QUANTITIES
 Exc. .28 cu. yds.
 Con. 1-8 .17 cu. yds.
 Con. 1-5 1/2 (precast cap) .02 cu. yds.
 Reinf. Steel .22 lbs.
 10' V.P. 18 lin. ft.
 C.B. (old covers reset) (Rwy) 2

Sta. 200+98



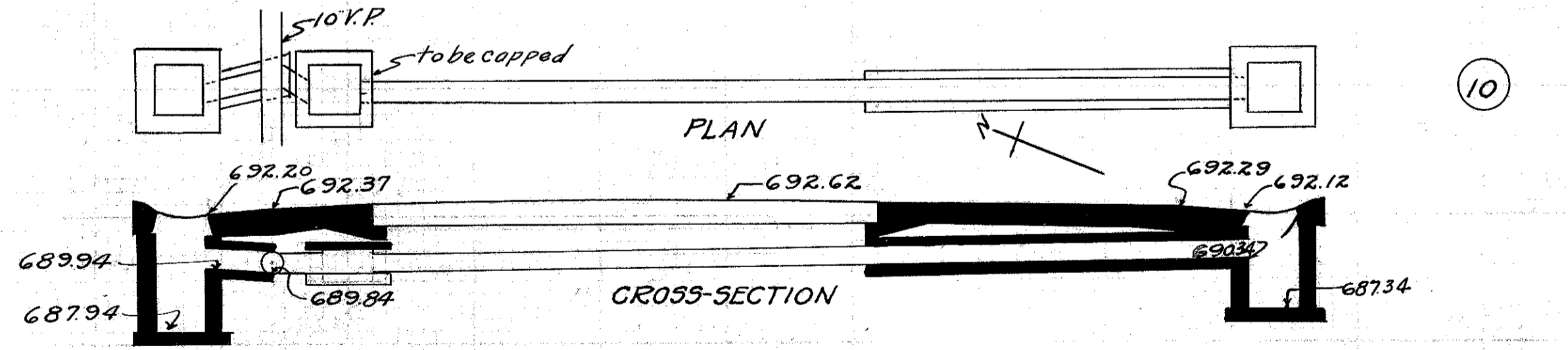
CULVERT DATA
 Type Std. V.S. Penc. Dr. #300
 Size 10'x18'

Work Req: Extend present culv. to R. with 10'x14' V.Penc. culv. Build C.B. on R & L. On L. connect to present sewer with 10'x4' V.Penc. Cap old I.B. on L.

Drawn by Beebe & Plummer Checked by Date
 Date 2-18-29

EST QUANTITIES
 Exc. .29 cu. yds.
 Con. 1-8 .15 cu. yds.
 Con. 1-5 1/2 (precast cap) .02 cu. yds.
 Reinf. Steel .22 lbs.
 10' V.P. 18 lin. ft.
 C.B. (old covers reset) (Rwy) 2

Sta. 190+99



CULVERT DATA
 Type Std. V.S. Penc. Dr. #300
 Size 10'x18'

Work Req: Extend present culv. to R. with 10'x14' V.Penc. Build C.B. on R & L. On L. connect to present sewer with 10'x4' V.Penc. Cap old I.B. on L.

Drawn by Beebe & Plummer Checked by Date
 Date 2-18-29

EST QUANTITIES
 Exc. .28 cu. yds.
 Con. 1-8 .17 cu. yds.
 Con. 1-5 1/2 (precast cap) .02 cu. yds.
 Reinf. Steel .22 lbs.
 10' V.P. 18 lin. ft.
 C.B. (old covers reset) (Rwy) 2

Sta. 197+0