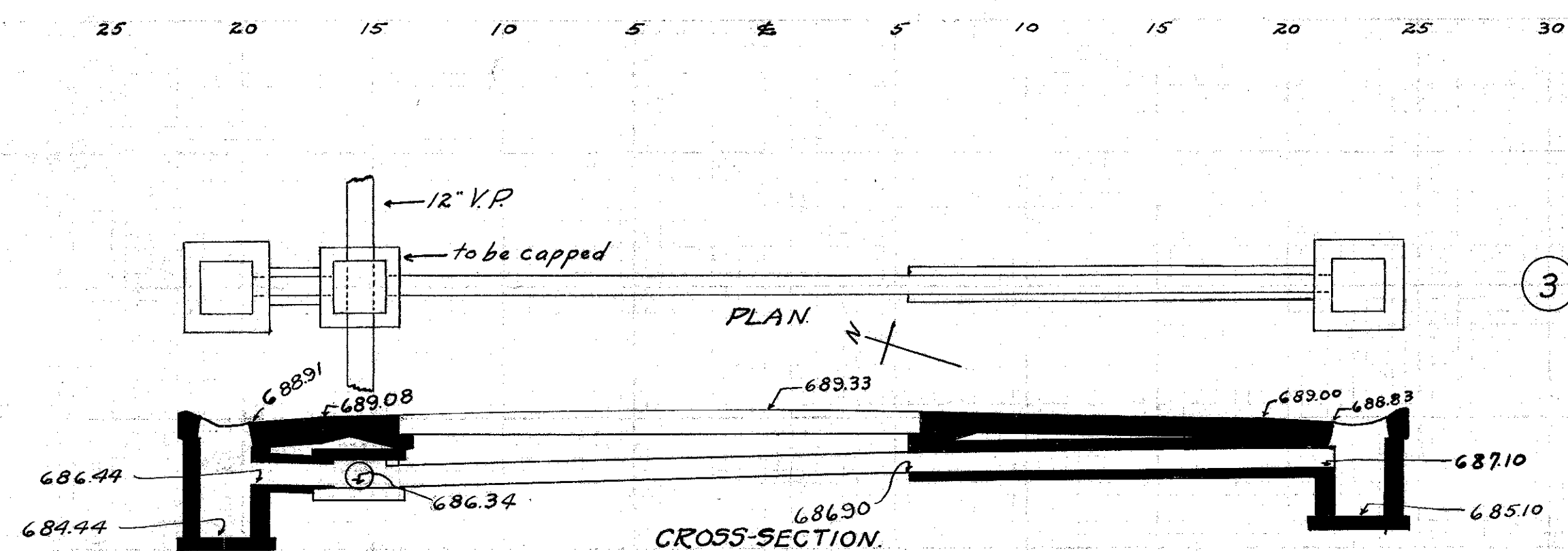


FED. RD. DIST. NO.	STATE	FED. AID PROJECT	FISCAL YEAR	42
10	OHIO	519C	1929	52

S.H. No. 2 Sec. G, H, + Mentor LAKE COUNTY.



CULVERT DATA

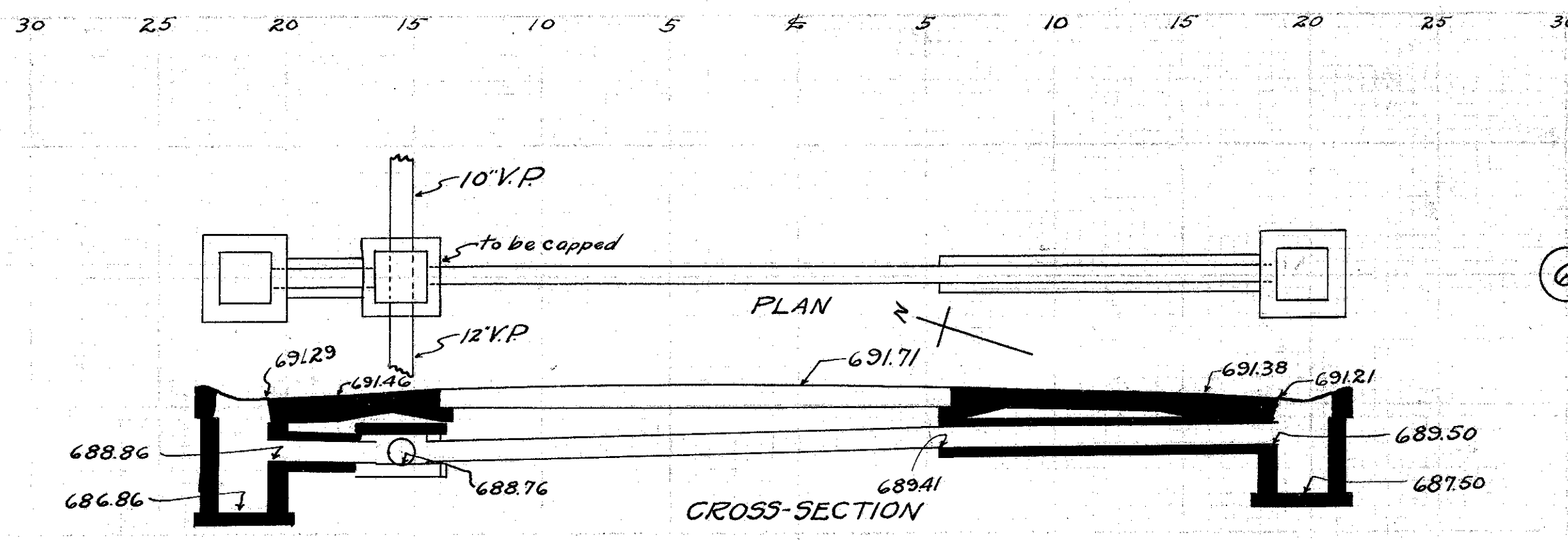
Type: Std. V.S.P. enc. Dr. #300
 Size: 10' x 22'
 Work Req: Extend present culv. to R with 10' x 18' Std. V.P. enc. culv.
 Build C.B. on R+L. On L. connect to present sewer with 10' x 4' V.P. enc. Cap old I.B. on L.

Drawn by: Beebe + Plummer Checked by:
 Date: 2-14-29 Date:

Sta. 178+49

EST. QUANTITIES

Exc.	3.5	cu. yds.
Con. 1-8	1.6	cu. yds.
Con. 1-5 1/2 (precast cap)	0.2	cu. yds.
Reinf. Steel	2.2	lbs.
10" V.P.	2.2	ft.
C.B. (old covers reset) (Rwy)	2	



CULVERT DATA

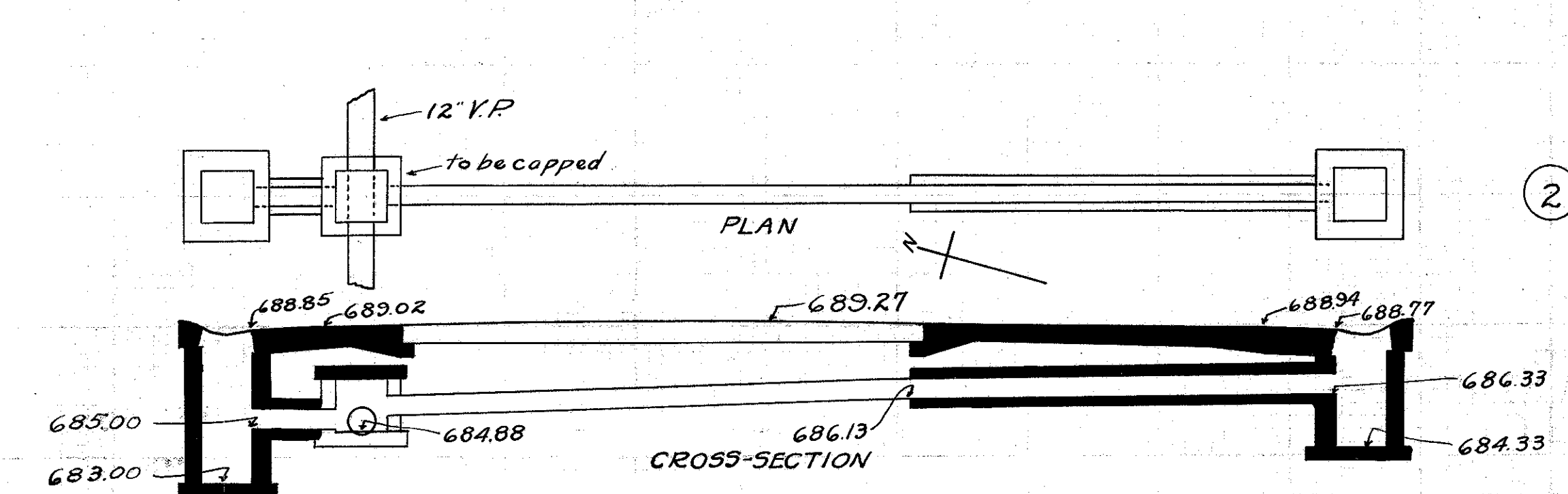
Type: Std. V.S. Penc. Dr. #300
 Size: 10' x 18'
 Work Req: Extend present culv. to R with 10' x 14' Std. V.P. enc. culv.
 Build C.B. on R+L. On L. connect to present sewer with 10' x 4' V.P. enc. Cap old I.B. on L.

Drawn by: Beebe + Plummer Checked by:
 Date: 2-15-29 Date:

Sta. 187+0

EST. QUANTITIES

Exc.	3.1	cu. yds.
Con. 1-8	1.5	cu. yds.
Con. 1-5 1/2 (precast cap)	0.2	cu. yds.
Reinf. Steel	2.2	lbs.
10" V.P.	1.8	ft.
C.B. (old covers reset) (Rwy)	2	



CULVERT DATA

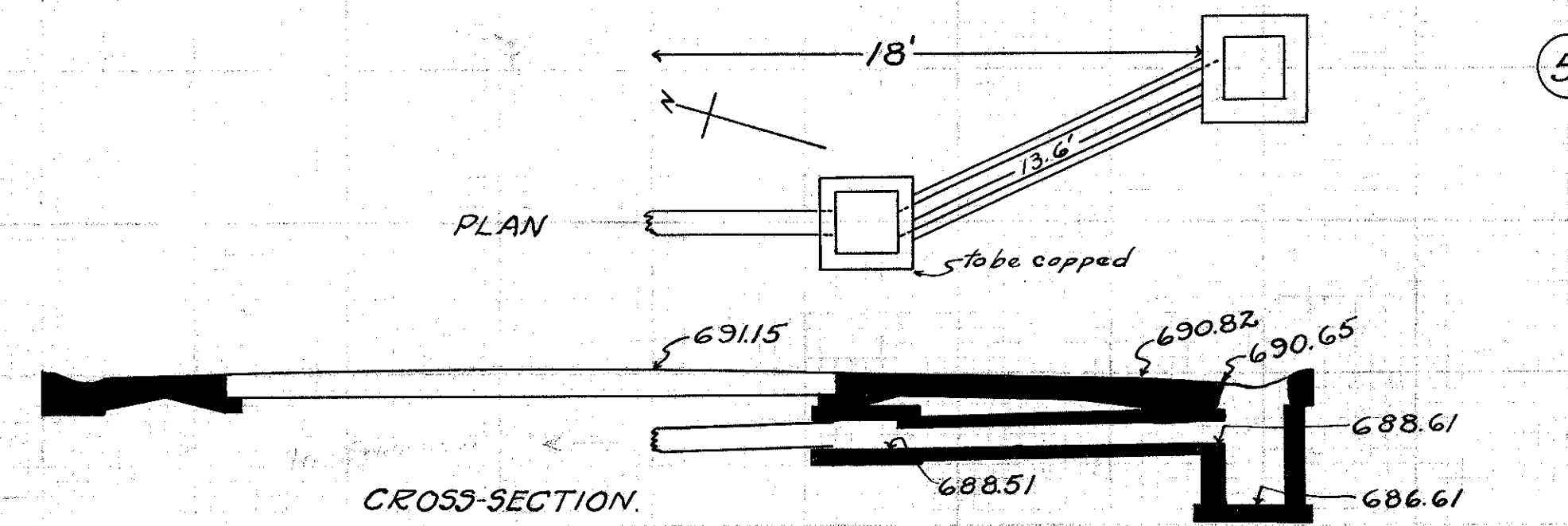
Type: Std. V.S.P. enc. Dr. #300
 Size: 10' x 22'
 Work Req: Extend present culv. to R with 10' x 18' Std. V.P. enc. culv.
 Build C.B. on R+L. On L. connect to present sewer with 10' x 4' V.P. enc. Cap old I.B. on L.

Drawn by: Beebe + Plummer Checked by:
 Date: 2-14-29 Date:

EST. QUANTITIES

Exc.	4.2	cu. yds.
Con. 1-8	1.6	cu. yds.
Con. 1-5 1/2 (precast cap)	0.2	cu. yds.
Reinf. Steel	2.2	lbs.
10" V.P.	2.2	ft.
C.B. (old covers reset) (Rwy)	2	

Sta. 172+39



CULVERT DATA

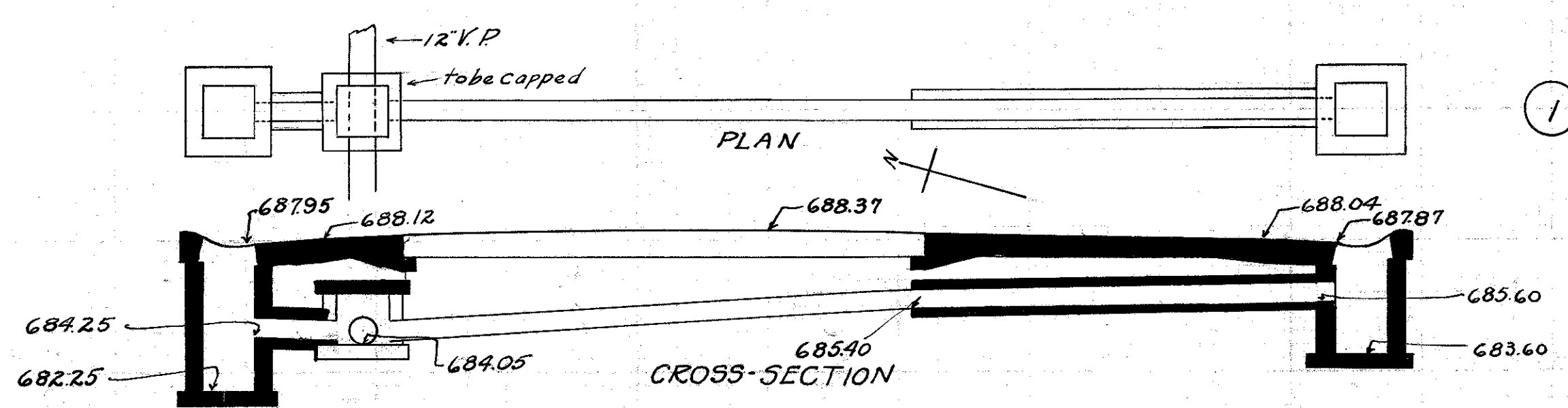
Type: Std. V.S. Penc. Dr. #300
 Size: 10' x 14'
 Work Req: Extend present culv. to R with 10' x 14' Std. enc. culv.
 Build C.B. on R. Cap old I.B. on R.

Drawn by: Beebe + Plummer Checked by:
 Date: 2-16-29 Date:

Sta. 185+06

EST. QUANTITIES

Exc.	3.0	cu. yds.
Con. 1-8	1.3	cu. yds.
Con. 1-5 1/2	0.2	cu. yds.
Reinf. Steel	2.2	lbs.
10" V.P.	1.4	ft.
C.B. (old covers reset) (Rwy)	1	



CULVERT DATA

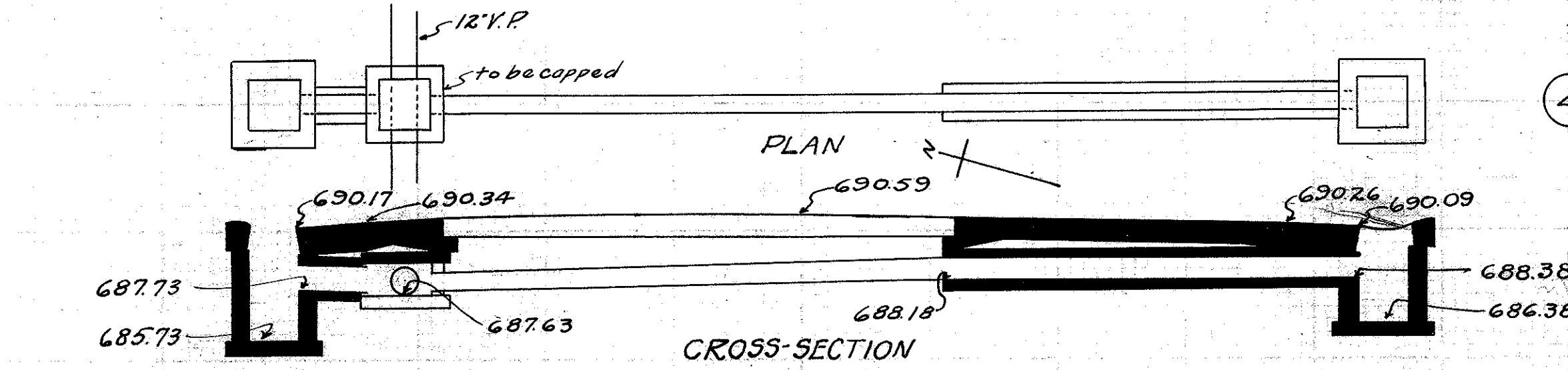
Type: Std. V.S.P. enc. Dr. #300
 Size: 10' x 22'
 Work Req: Extend present culv. to R with 10' x 18' Std. V.P. enc. culv.
 Build C.B. on R+L. On L. connect to present sewer with 10' x 4' V.P. enc. Cap old I.B. on L.

Drawn by: Beebe + Plummer Checked by:
 Date: Date:

EST. QUANTITIES

Exc.	3.8	cu. yds.
Con. 1-8	1.6	cu. yds.
Con. 1-5 1/2 (precast cap)	0.2	cu. yds.
Reinf. Steel	2.2	lbs.
10" V.P.	2.2	ft.
C.B. (old covers reset) (Rwy)	2	

Sta. 163+49



CULVERT DATA

Type: Std. V.S. Penc. Dr. #300
 Size: 10' x 22'
 Work Req: Extend present culv. to R with 10' x 18' Std. V.P. enc. culv.
 Build C.B. on R+L. On L. connect to present sewer with 10' x 4' V.P. enc. Cap old I.B. on L.

Drawn by: Beebe + Plummer Checked by:
 Date: 2-16-29 Date:

Sta. 182+98

EST. QUANTITIES

Exc.	4.0	cu. yds.
Con. 1-8	1.6	cu. yds.
Con. 1-5 1/2 (precast cap)	0.2	cu. yds.
Reinf. Steel	2.2	lbs.
10" V.P.	2.2	ft.
C.B. (old covers reset) (Rwy)	2	