

FED. RD DIST. NO.	STATE	FED. AID PROJECT	FISCAL YEAR	7
10	OHIO	519C	1929	52

SH.N^o2 SEC. G-H & Mentor. LAKE COUNTY.

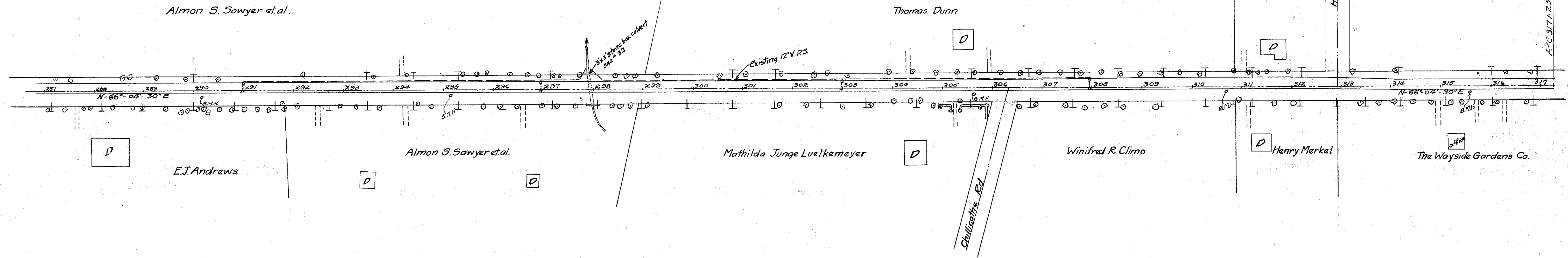
30 Sta. 290+97
Extend existing 10"x18" V.P. cam. joints with 10"x18" Std. V.P. enc. culv. C.B. R+L

31 Sta. 296+96
Extend existing 10"x18" V.P. cam. joints with 10"x18" Std. V.P. enc. culv. C.B. R+L

32 Sta. 297+95
Remove stone top and build slab top on 3' x 3' stone box culv. 5' x 6' x 8' 7"

33 Sta. 302+97
Extend existing 10"x18" V.P. cam. joints with 10"x18" Std. V.P. enc. culv. C.B. R+L

34 Sta. 307+95
Extend existing 10"x18" V.P. cam. joints with 10"x18" Std. V.P. enc. culv. C.B. R+L



BM*57 Sta. 291+78
Spike in root 48" M
23.5' to L of ±
Elev. 700.66

BM*58 Sta. 297+86.5
x on SW cor. 3 wall culvert
32' to R of ±
Elev. 697.59

BM*59 Sta. 302+27
Spike in root 30" M.
31' to R of ±
Elev. 702.30

BM*60 Sta. 306+52
Spike in root 36" M.
38' to R of ±
Elev. 700.54

BM*61 Sta. 310+95
Spike in side 30" M
24' to R of ±
Elev. 702.70

BM*62 Sta. 316+30
Spike in root 30" M.
29' to L of ±
Elev. 703.44

Grade line shown is ± profile.

