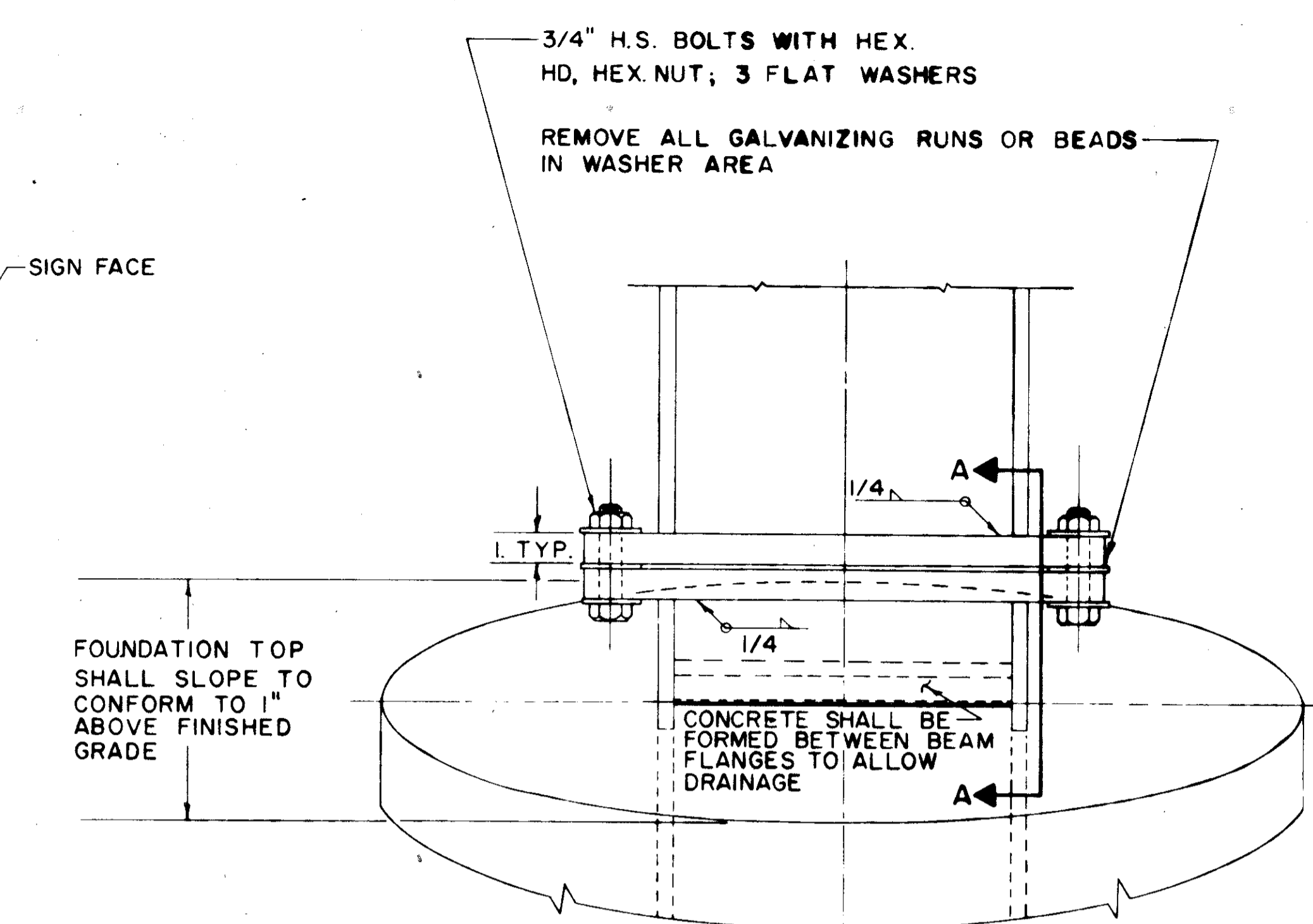
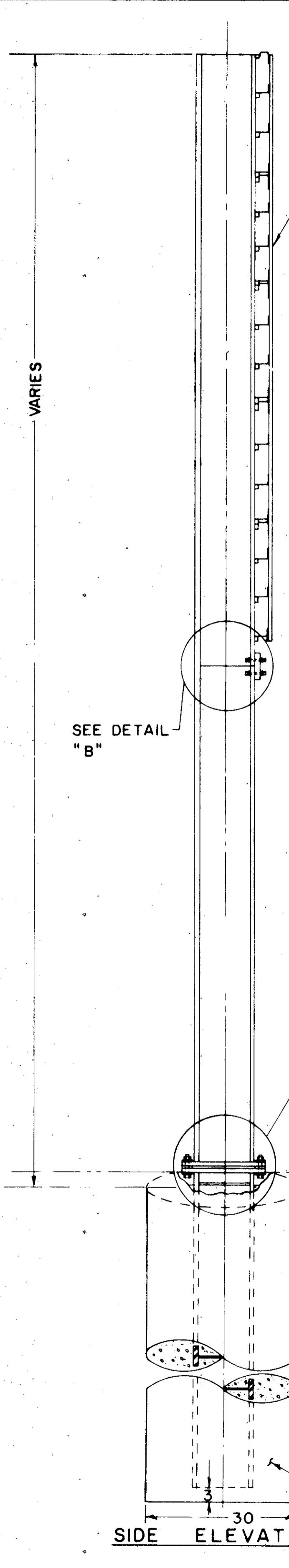


LAK-20/84/283/306/615

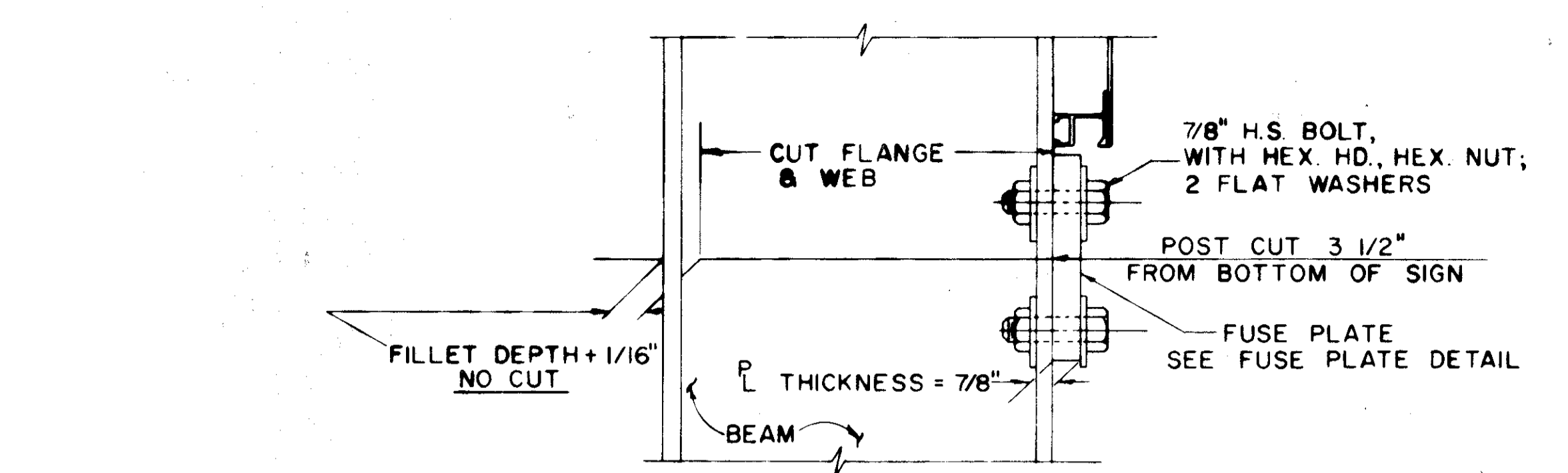


BOLTING PROCEDURE

1. ASSEMBLE POST TO STUB W/BOLTS & ONE FLAT WASHER ON EACH BOLT BETWEEN PLATES.
2. TIGHTEN ALL BOLTS THE MAXIMUM POSSIBLE W/12" TO 15" WRENCH TO BED & TO CLEAN BOLT THREADS. LOOSEN EACH BOLT IN TURN & RETIGHTEN BOLTS IN A SYSTEMATIC ORDER TO THE PRESCRIBED TORQUE OF 750 IN. LBS.
3. BURR THREADS AT JUNCTION W/NUT USING A CENTER PUNCH TO PREVENT NUT LOOSENING.

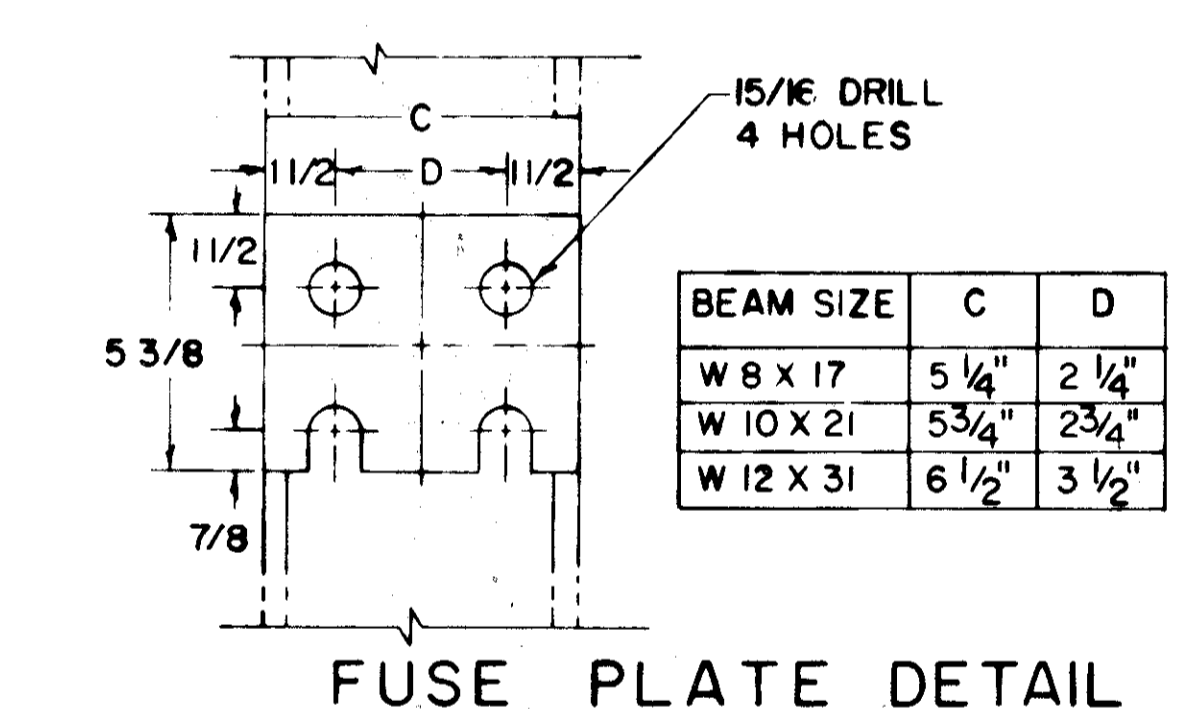
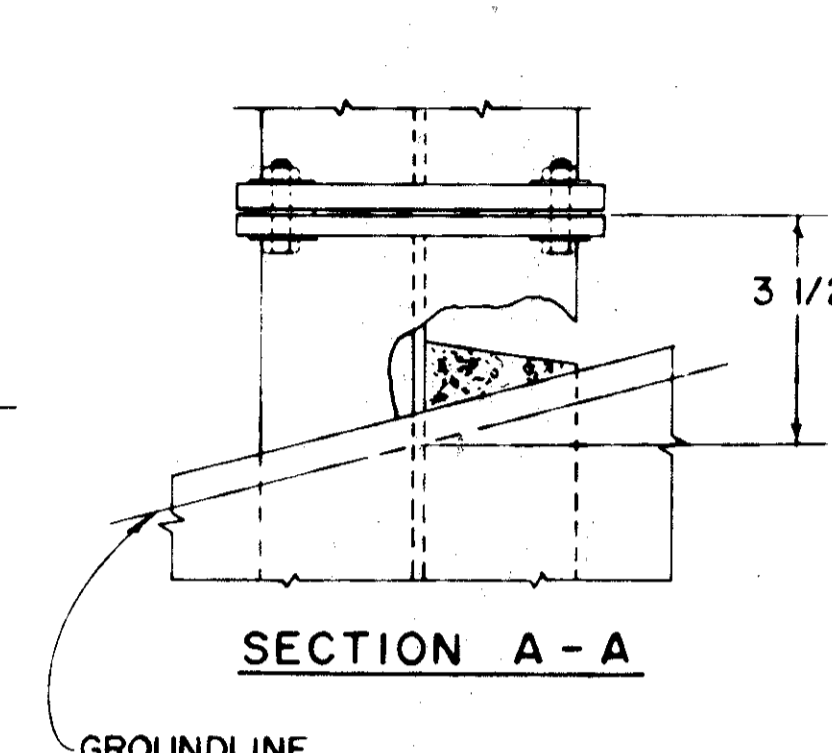
NOTE: TIGHTEN THE H.S. BOLTS IN THE BASE CONNECTION ONLY TO GIVEN TORQUE DO NOT OVER TIGHTEN

VIEW "A" ROTATED 180°

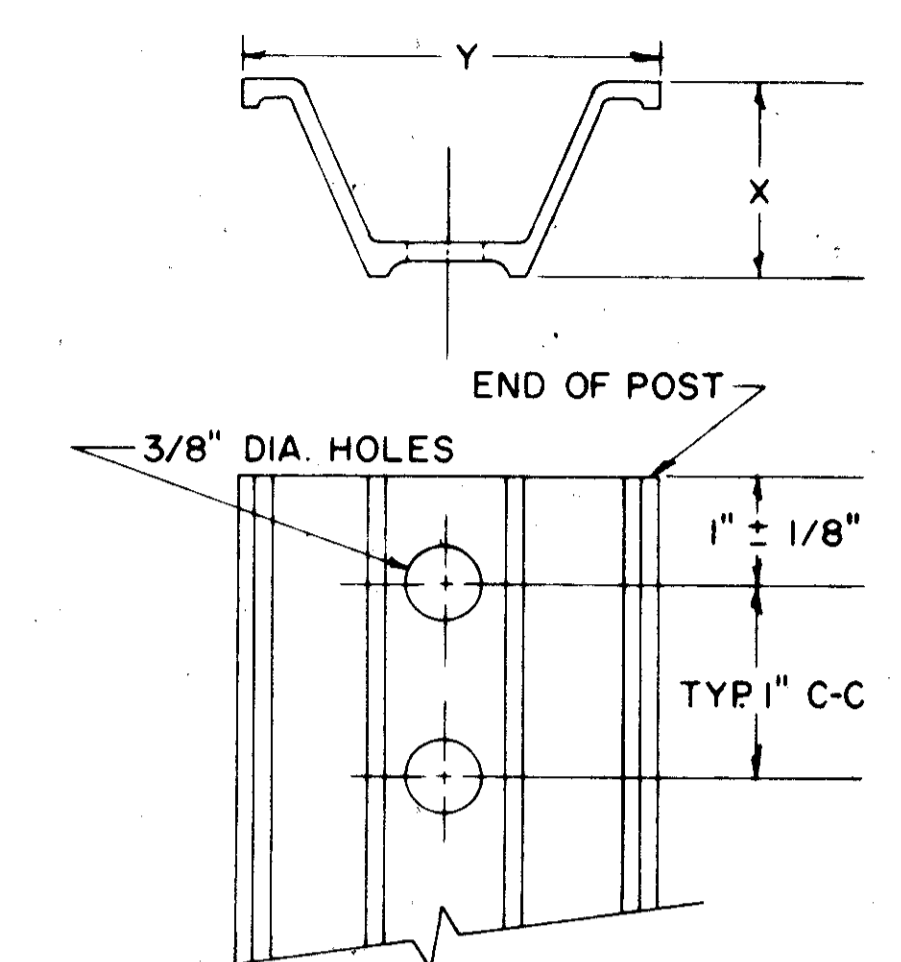


FABRICATOR NOTE: ALL FRICTION FUSE BOLTS SHALL BE TIGHTENED IN THE SHOP FOLLOWING A METHOD APPROVED BY THE ENGINEER. TIGHTENING SHALL BE TO SUCH A DEGREE AS TO OBTAIN MINIMUM RESIDUAL TENSION IN EACH BOLT OF 36,050 LBS.

NOTE: INSTALL FUSE PLATE WITH NOTCHES TOWARD BASE



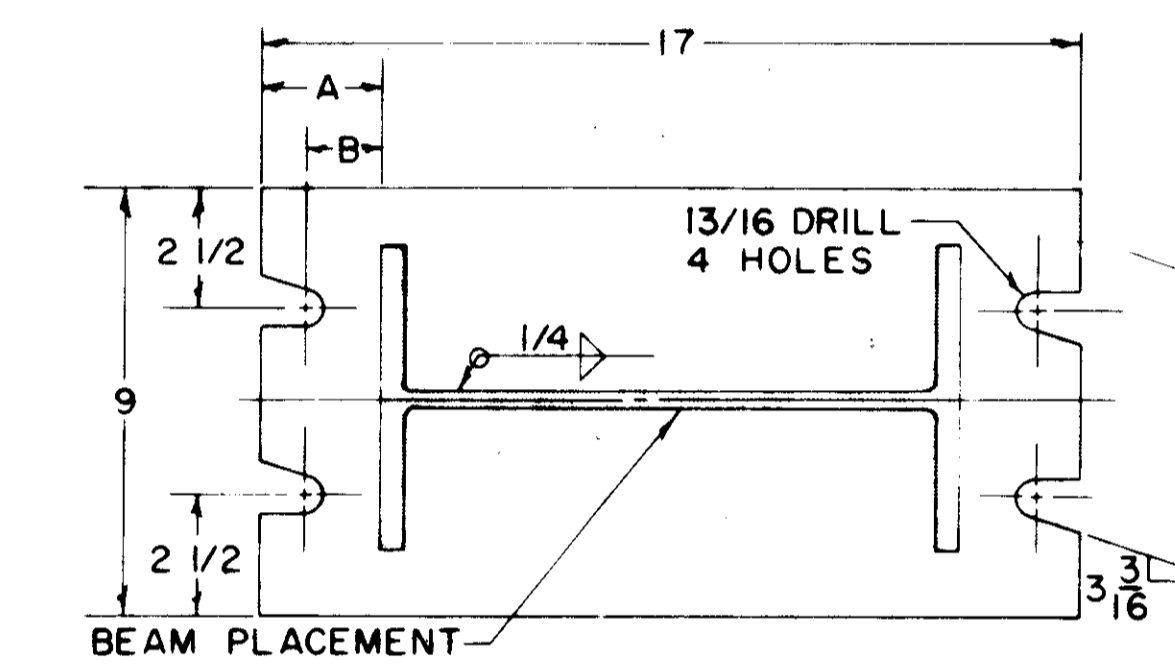
FUSE PLATE DETAIL



WEIGHT PER FOOT	X ± 3/32"	Y ± 1/8"
2.00 #	1 15/32"	3 1/16"
3.00 #	1 7/8"	3 1/2"
4.00 #	2"	3 5/8"

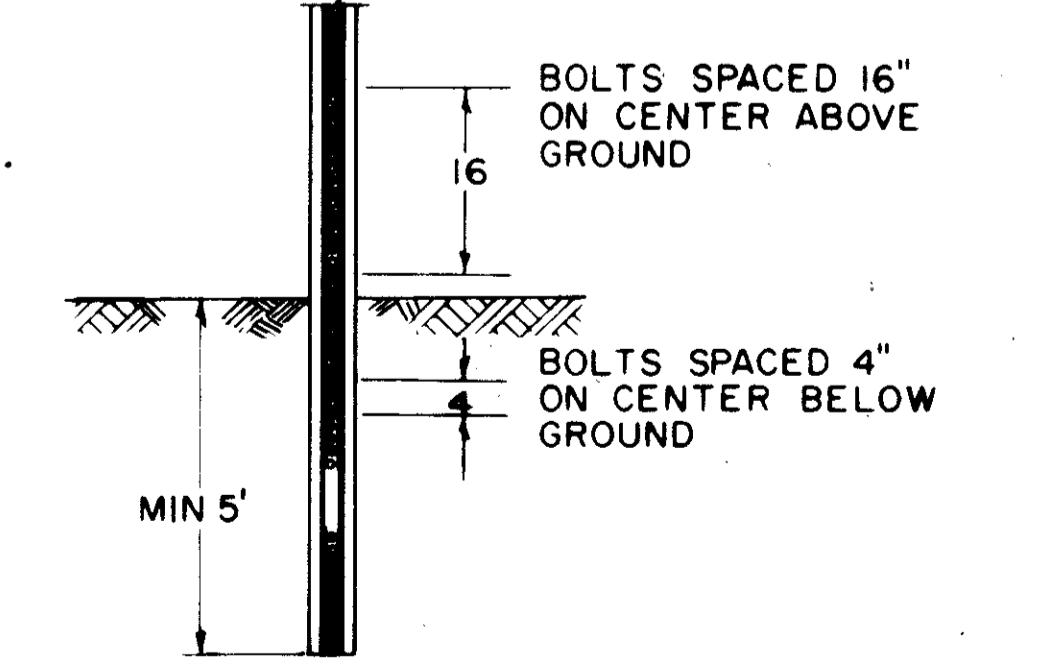
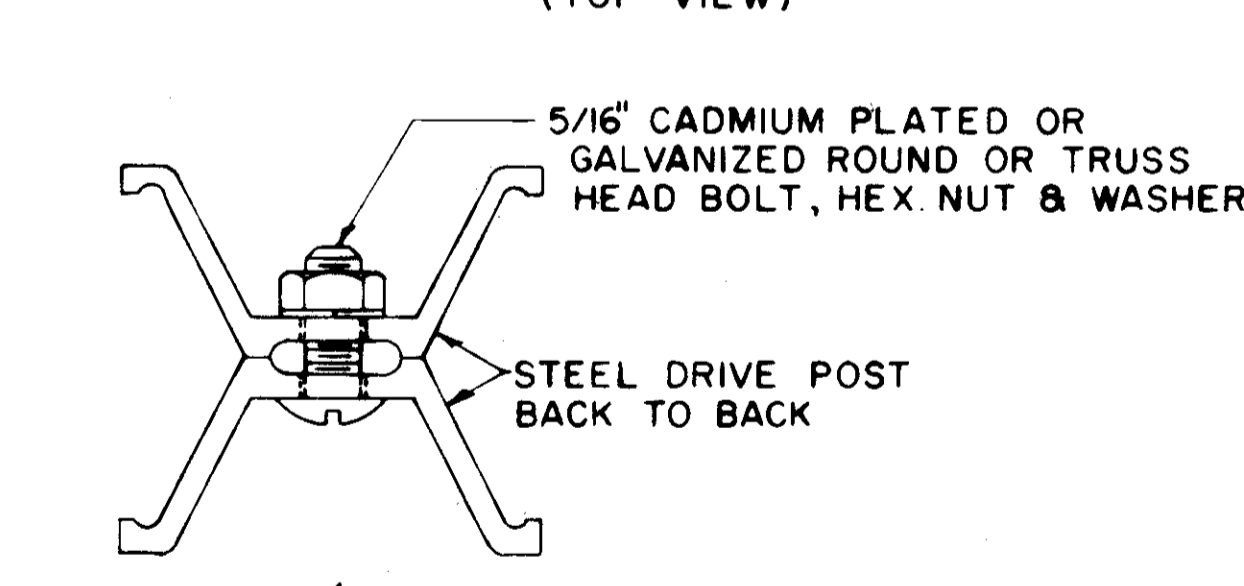
DRIVE POST DETAIL

SUPPLEMENTING THE DRIVE POST DETAILS SHOWN, ALTERNATE POST SECTIONS MAY BE FURNISHED. ANY ALTERNATE SECTION FURNISHED SHALL MEET ALL THE MATERIAL REQUIREMENTS OF 816, HAVE A SHAPE APPROXIMATELY AS DETAILED, AND HAVE A MOMENT OF INERTIA EQUAL TO OR GREATER THAN THE SECTION DETAILED. THE REQUIREMENTS OF 712.20 RELATIVE TO MAXIMUM WEIGHT TOLERANCE ARE HEREBY WAIVED. NO ALTERNATE SECTION FURNISHED SHALL EXCEED THE WEIGHT OF THE CORRESPONDING SECTION BY MORE THAN 10 PERCENT.

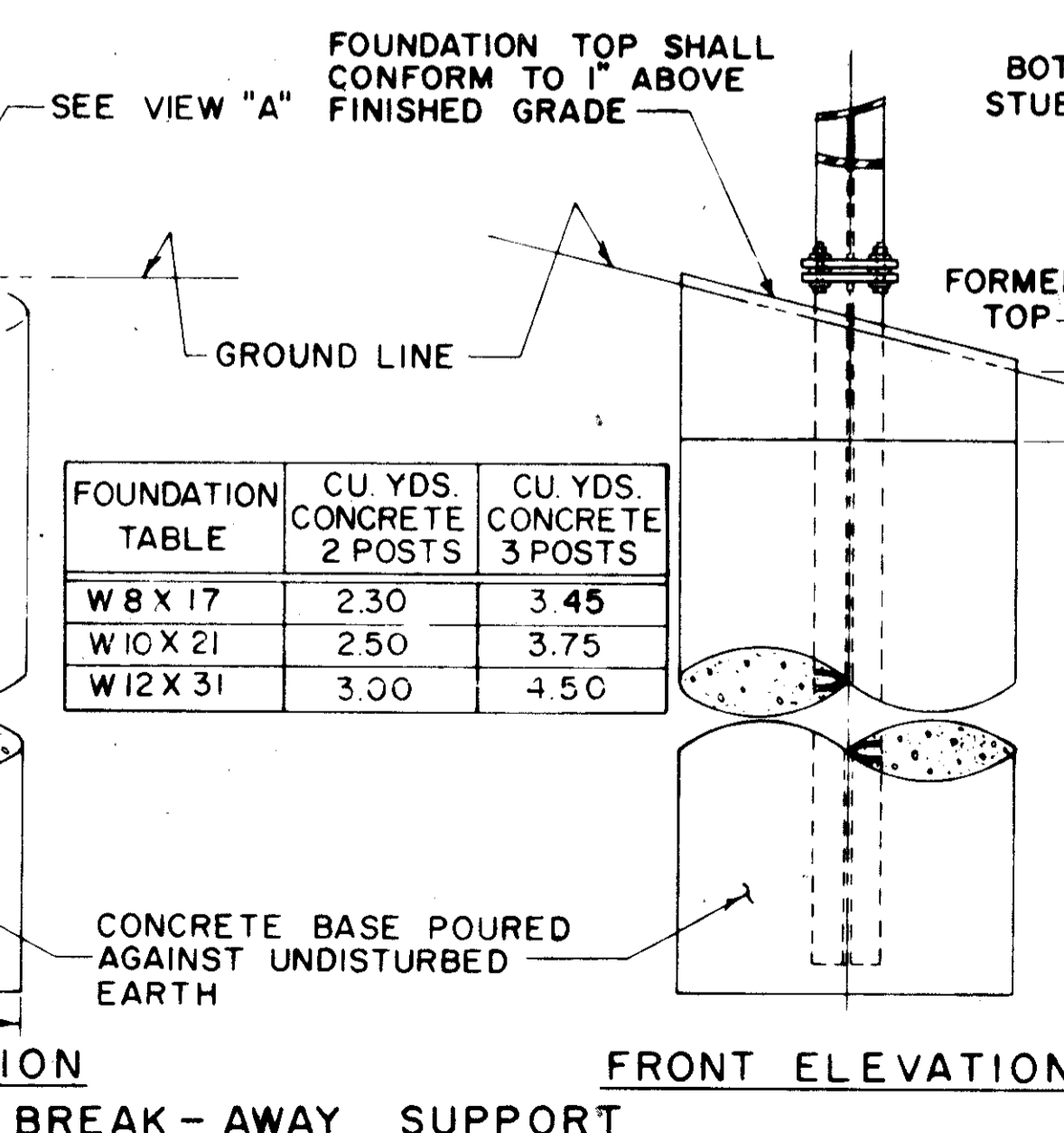


BEAM SIZE	A	B
W 8 X 17	4 1/2"	3 5/8"
W 10 X 21	3 1/2"	2 5/8"
W 12 X 31	2 1/2"	1 5/8"

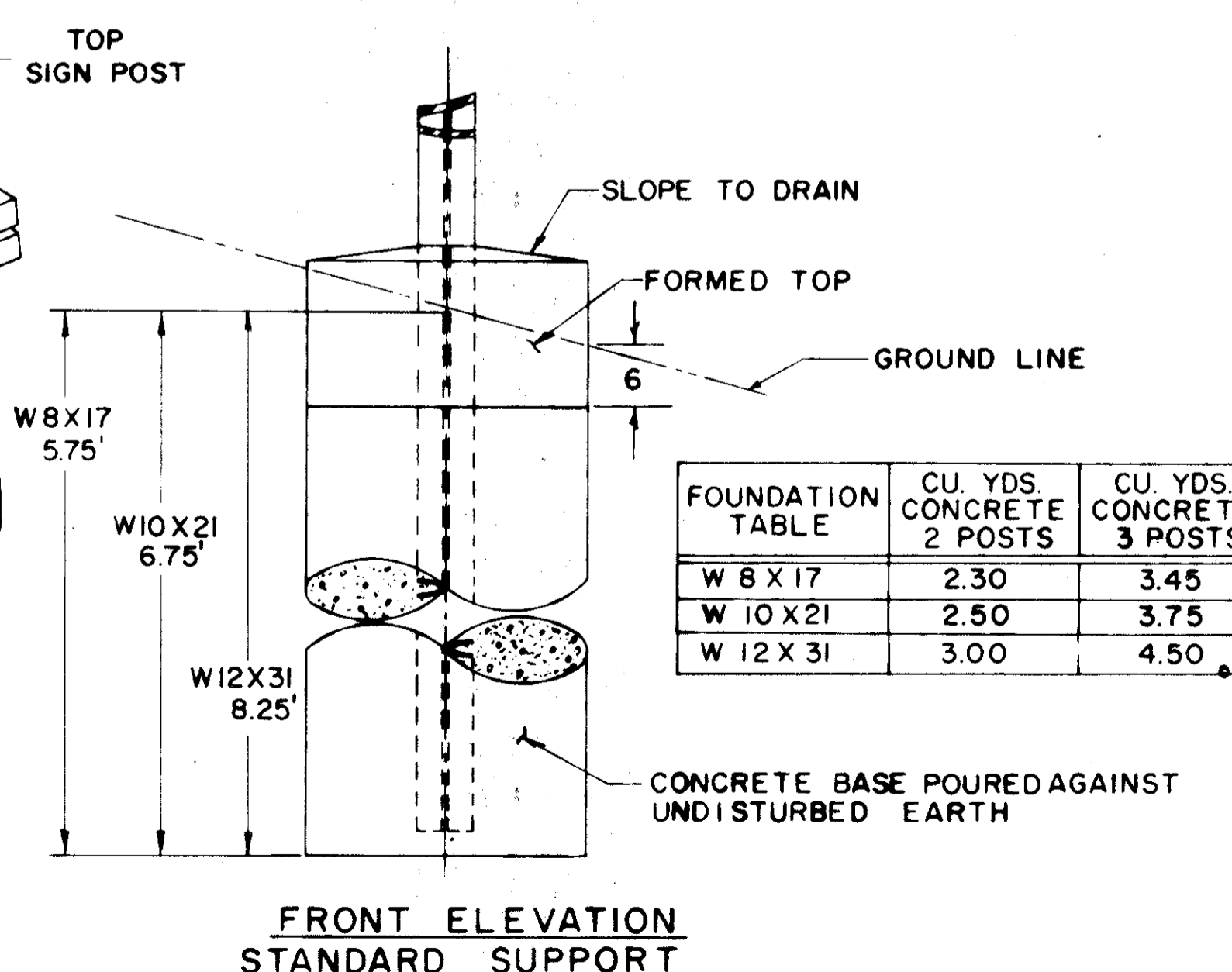
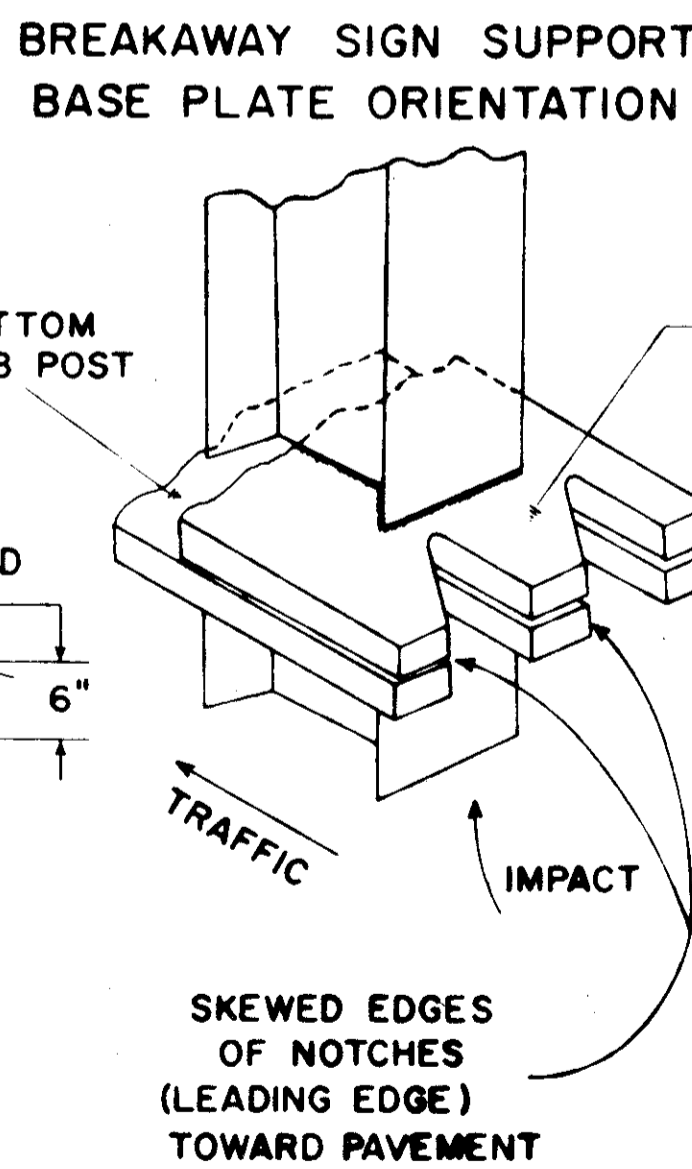
BASE PLATE DETAIL (TOP VIEW)



6# BEAM DETAIL



FOUNDATION TABLE	CU. YDS. CONCRETE 2 POSTS	CU. YDS. CONCRETE 3 POSTS
W 8 X 17	2.30	3.45
W 10 X 21	2.50	3.75
W 12 X 31	3.00	4.50



FOUNDATION TABLE	CU. YDS. CONCRETE 2 POSTS	CU. YDS. CONCRETE 3 POSTS
W 8 X 17	2.30	3.45
W 10 X 21	2.50	3.75
W 12 X 31	3.00	4.50

STRUCTURAL SUPPORTS

BUREAU OF TRAFFIC
OHIO DEPARTMENT OF HIGHWAYS

GROUND MOUNTED SIGN SUPPORTS

DATE: 5-10-68, 7-12-68, 5-23-69, 9-16-69, 12-20-71

APPROVED _____ ENGINEER OF TRAFFIC