

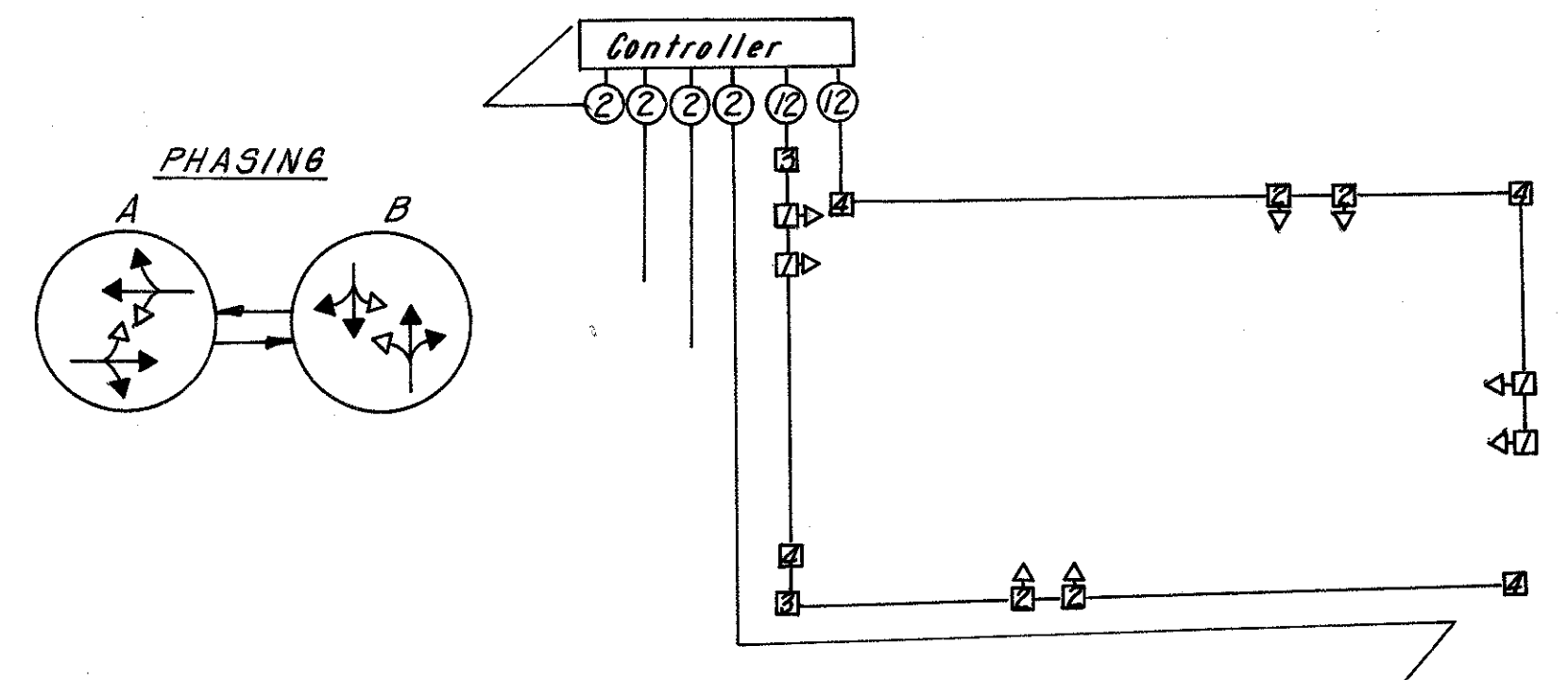
COLOR SEQUENCE CHART

SIGNAL NO	LENS	DIAL SETTINGS (SECONDS)					
		42	0	3	10	8	3
1	R						
	Y						
2	R						
	Y						
3	DN'T WALK						
	WALK						
4	DN'T WALK						
	WALK						
Offset 1		74 Seconds					
Offset 2		52 Seconds					
Offset 3		40 Seconds					

Note: F = Flashing "Don't Walk"

* Pedestrian Push Button
NOTE: S.L. = Stop Line
"Striping By Others" (150' From S.L.)

WIRING DIAGRAM



CALC: P.E. 4-73
CHK: 4-73

QUAN.	UNIT	ITEM	DESCRIPTION
3	EA.	816	SIGNAL STRAIN POLE 3 GA. 8" x 28'
270	L.F.	816	MESSENGER WIRE 7 STRAND 3/8" WITH ACCESSORIES
4.3	C.Y.	816	CONCRETE FOR SIGNAL SUPPORT FOUNDATIONS
0.8	C.Y.	816	CONCRETE FOR CONTROLLER AND PEDESTAL FOUNDATIONS
4	EA.	G25	TRAFFIC SIGNAL HEADS, 3 SECTION, 12" LENS, ONE-WAY
4	EA.	G25	TRAFFIC SIGNAL HEADS, 3 SECTION, 8" LENS, ONE-WAY
6	EA.	G25	PEDESTRIAN SIGNAL HEAD, INCANDESCENT COLORED BULB, 4 1/2" LETTER
2	EA.	G25	PEDESTRIAN PUSH BUTTON WITH SIGN
1	EA.	G25	SIGNAL CONTROLLER (2 PHASE DIGITAL SOLID STATE TRAFFIC TIMER)
1	EA.	G25	SIGNAL CONTROL CABINET, 7.7 C.F.
1	EA.	G25	10 CHANNEL DECODER
2	EA.	G25	LOOP DETECTOR AMPLIFIER
1	EA.	G25	POWER SERVICE
4	EA.	G25	GROUND ROD
1	EA.	G25	WEATHERHEAD AND CONDUIT RISER
8	EA.	G25	COVERING OF TRAFFIC SIGNAL HEADS
532	L.F.	G25	SIGNAL CABLE 12/C NO. 14 AWG IMSA 19-1-G7
257	L.F.	G25	LOOP DETECTOR WIRE, NO. 14 AWG, RHW OR RHW TYPE
381	L.F.	G25	LOOP DETECTOR LEAD-IN CABLE, 2/C NO. 14 AWG, TWISTED PAIR, SHIELDED
80	L.F.	G25	POWER CABLE 3/C NO. 8 AWG STRANDED RHW OR RHW TYPE
108	L.F.	G25	LOOP DETECTOR PAVEMENT CUTTING
61	L.F.	G25	TRENCH
7	EA.	G25	CABLE SUPPORT ASSEMBLY
2	EA.	G25	PULL BOX 18" CIRCULAR 713.03, AS PER PLAN
0.11	MI.	G21	CENTER LINES, DOUBLE THERMOPLASTIC (SOLID-DASHED)
0.14	MI.	G21	4" LANE LINES, THERMOPLASTIC
43	L.F.	G21	24" STOP LINES, THERMOPLASTIC
28	L.F.	G21	12" STOP LINES, THERMOPLASTIC
205	L.F.	G21	6" CROSSWALK LINES, THERMOPLASTIC
61	L.F.	G25	CONDUIT 2" 713.04 TYPE III
1	EA.	202	REMOVAL OF EXISTING SIGNAL INSTALLATION