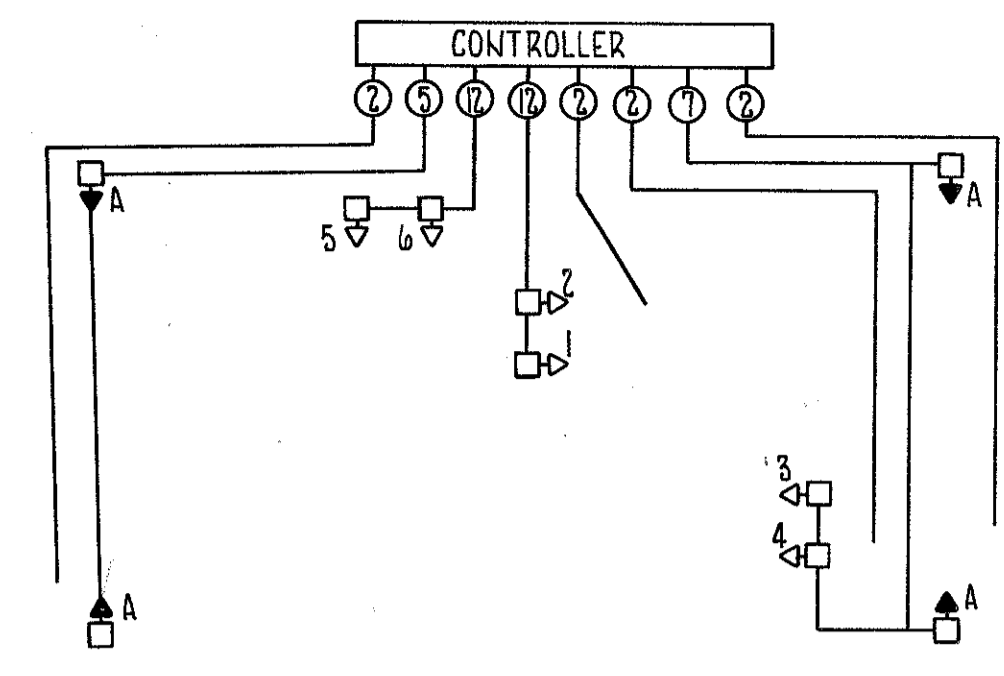
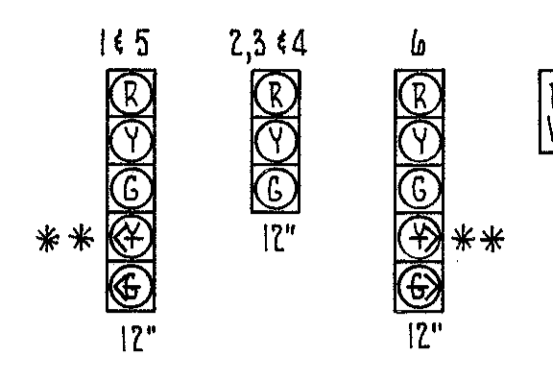


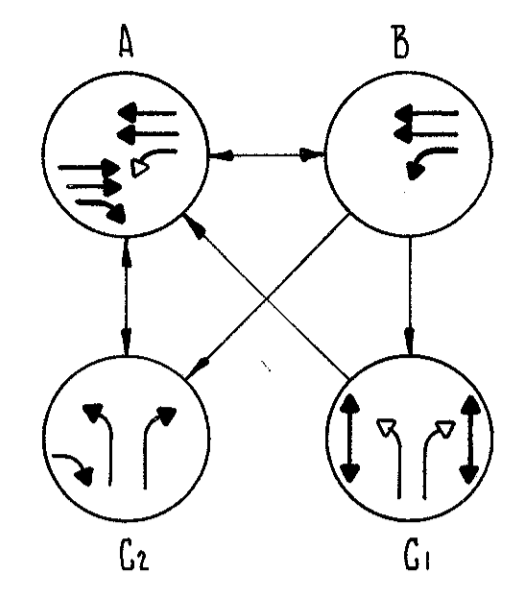
**WIRING DIAGRAM**



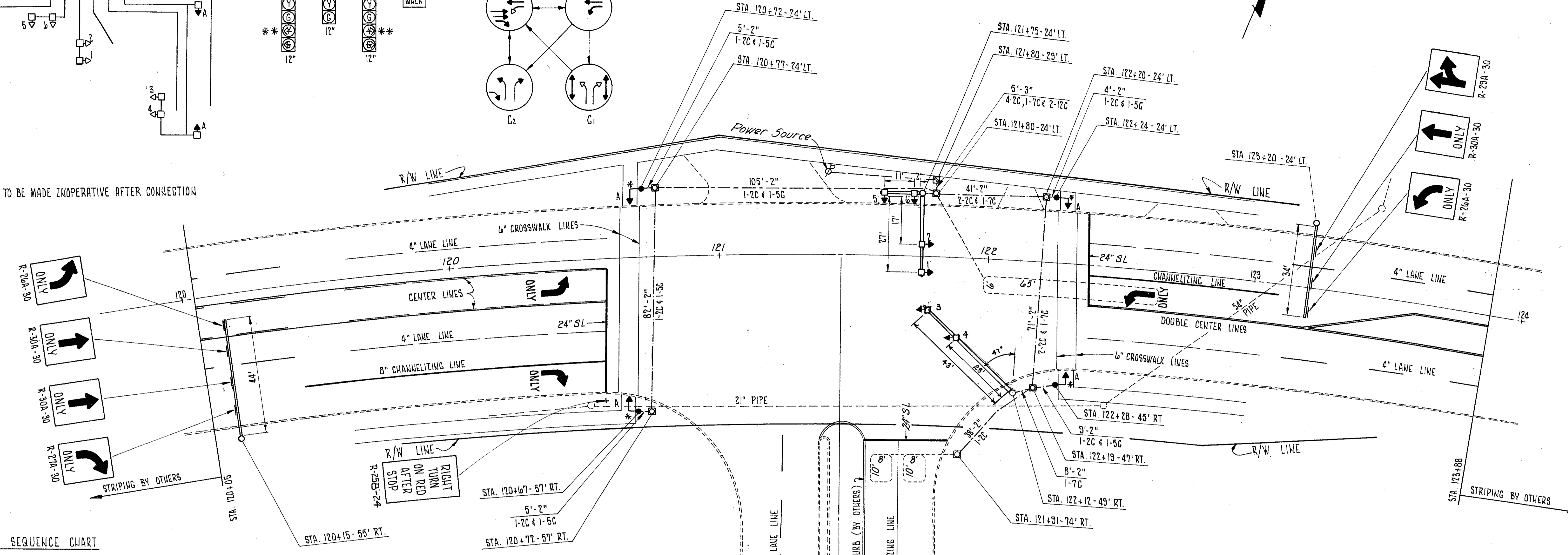
**SIGNALS**



**PHASING**



NOTE: \*\* SECTION TO BE MADE INOPERATIVE AFTER CONNECTION



**COLOR SEQUENCE CHART**

STREET	NUMBER OF SIGNAL	LENS	DIAL SETTINGS (SECONDS)												
			7		3		7		3		7		3		
			MIN.	VAR.	MIN.	VAR.	MIN.	VAR.	MIN.	VAR.	MIN.	VAR.			
CROSS MENTOR	A	DW	INTERVAL												
			1	2	3	4	5	6A	7A	8A	6	7	8		
MENTOR AVE.	WEST BOUND	1													
MENTOR AVE.	EAST BOUND	4													
PLAZA BLVD.	NORTH BOUND	6													

F = FLASHING "DONT WALK"  
 (1) YELLOW IF PHASE B SKIPPED.  
 (2) GREEN CONTINUES IF PHASE C IS SKIPPED.

OFFSET 1 - AVERAGE  
 OFFSET 2 - INBOUND  
 OFFSET 3 - OUTBOUND

QUAN.	UNIT	ITEM	DESCRIPTION	QUAN.	UNIT	ITEM	DESCRIPTION
1	EA.	816	SIGNAL SUPPORT 3 GA., 12" x 20' POLE, 44' ARM	7	EA.	G25	GROUND ROD
1	EA.	816	SIGNAL SUPPORT 7 GA., 12" x 20' POLE, 28' & 14' ARMS	6	EA.	G25	PULL BOX 18" CIRCULAR 713.09, AS PER PLAN
1	EA.	816	OVERHEAD SIGN SUPPORT, 7 GA., 12" x 20' POLE, 34' ARM	203	L.F.	G25	CONDUIT 2", 713.04, TYPE III
1	EA.	816	OVERHEAD SIGN SUPPORT, 3 GA., 12" x 20' POLE, 44' ARM	5	L.F.	G25	CONDUIT 3", 713.04, TYPE III
8.8	C.Y.	816	CONCRETE FOR SIGNAL SUPPORT FOUNDATIONS	153	L.F.	G25	CONDUIT 2", JACKED UNDER PAVEMENT, AS PER PLAN
4	EA.	816	PEDESTRIAN SIGNAL SUPPORT, PEDESTAL MOUNTED, 4" x 8"	208	L.F.	G25	TRENCH
1.8	C.Y.	816	CONCRETE FOR CONTROLLER AND PEDESTAL FOUNDATION	6	EA.	G25	COVERING OF TRAFFIC SIGNAL HEADS
3	EA.	G25	TRAFFIC SIGNAL HEAD, 3 SECTION, 12" LENS, ONE-WAY				
3	EA.	G25	TRAFFIC SIGNAL HEAD, 5 SECTION, 12" LENS, ONE-WAY				
4	EA.	G25	PEDESTRIAN SIGNAL HEAD, INCANDESCENT COLORED BULB TYPE, 4 1/2" LETTER	1	EA.	G25	POWER SERVICE
1	EA.	G25	SIGNAL CONTROLLER (3 PHASE DIGITAL SOLID STATE TRAFFIC TIMER)	0.14	MI.	G21	4" LANE LINES, THERMOPLASTIC
1	EA.	G25	SIGNAL CONTROL CABINET, 7.7 C.F.	0.04	MI.	G21	CENTER LINES, DOUBLE THERMOPLASTIC (SOLID)
2	EA.	G25	LOOP DETECTOR AMPLIFIER	0.06	MI.	G21	CENTER LINES, DOUBLE THERMOPLASTIC (SOLID-DASHED)
4	EA.	G25	PEDESTRIAN PUSH BUTTON WITH SIGN	246	L.F.	G21	CHANNELIZING LINES, THERMOPLASTIC
302	L.F.	G25	SIGNAL CABLE 5/C NO. 14 AWG IMSA 19-1-G7	111	L.F.	G21	24" STOP LINES, THERMOPLASTIC
217	L.F.	G25	SIGNAL CABLE 7/C NO. 14 AWG IMSA 19-1-G7	258	L.F.	G21	6" CROSSWALK LINES, THERMOPLASTIC
166	L.F.	G25	SIGNAL CABLE 12/C NO. 14 AWG IMSA 19-1-G7	3	EA.	G21	LANE ARROWS, THERMOPLASTIC
70	L.F.	G25	POWER CABLE 3/C NO. 8 AWG, STRANDED RHW OR RHW TYPE	57.5	S.F.	B15	SIGNS FLAT SHEET TYPE, AS PER PLAN
624	L.F.	G25	LOOP DETECTOR WIRE, NO. 14 AWG, RHW OR RHW TYPE	13.5	L.F.	B16	STRUCTURAL SUPPORT, G LB. BEAM, DRIVEN
630	L.F.	G25	LOOP DETECTOR LEAD-IN CABLE, 2/C NO. 14 AWG, TWISTED PAIR, SHIELDED				
255	L.F.	G25	LOOP DETECTOR PAVEMENT CUTTING	1	EA.	G25	10 CHANNEL DECODER
7	EA.	G25	CABLE SUPPORT ASSEMBLY	3	EA.	G21	WORD "ONLY" ON PAVEMENT, THERMOPLASTIC

CALC: TEB 9-73  
 CHK: [Signature]