

61-9 9-8

LNK USR20 0-2-6-11 of 5

LAKE COUNTY STATE HIGHWAY

USR 20
I.C.H. NO. 2 PETITION NO. 852 Sec. H

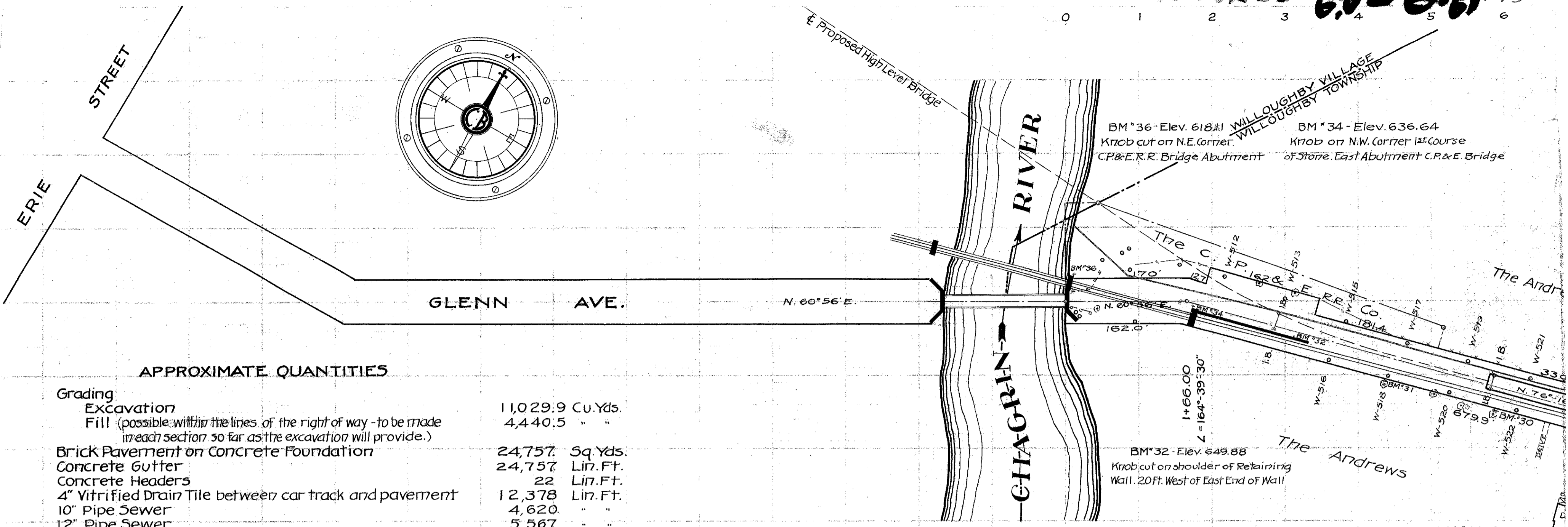
CLEVELAND - BUFFALO ROAD

FROM WILLOUGHBY VILLAGE TO MENTOR VILLAGE
Datum of Elevations - U.S.G.S. Bench Mark "695 Cleveland" Elev. 695.25
MARCH 1 1915

H.P. CUMINGS - RESIDENT ENGINEER
C.C. HADDEN - ASSISTANT ENGINEER

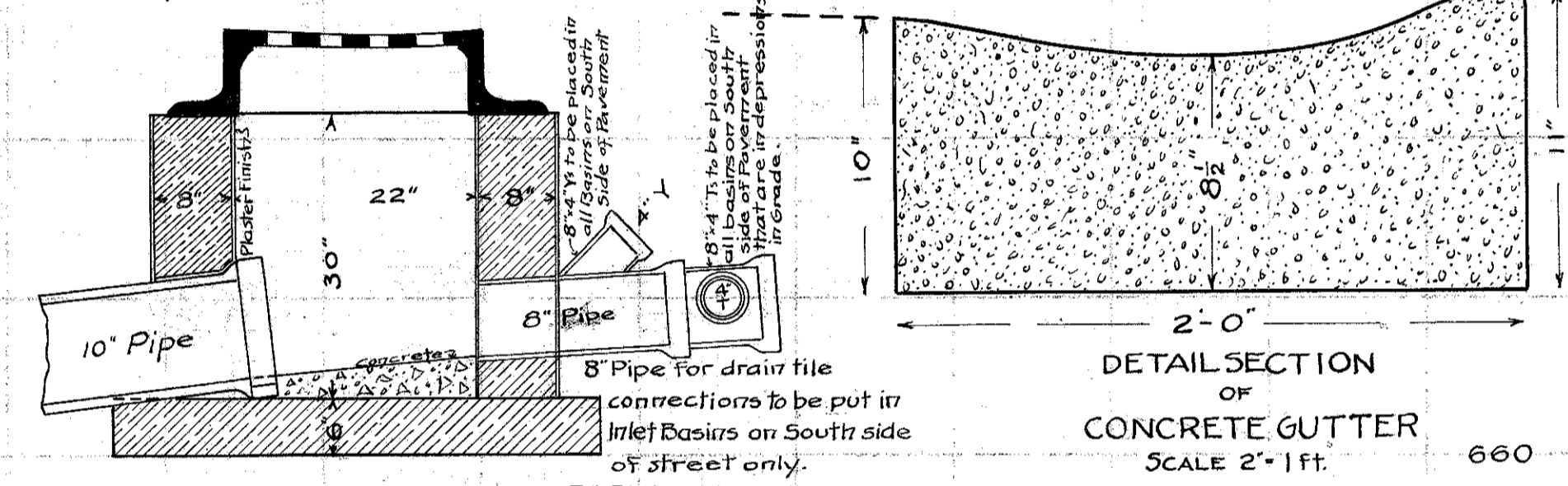
APPROVED *Frank B. Willis*
GOVERNOR OF OHIO

APPROVED *James R. Marken*
STATE HIGHWAY COMMISSIONER



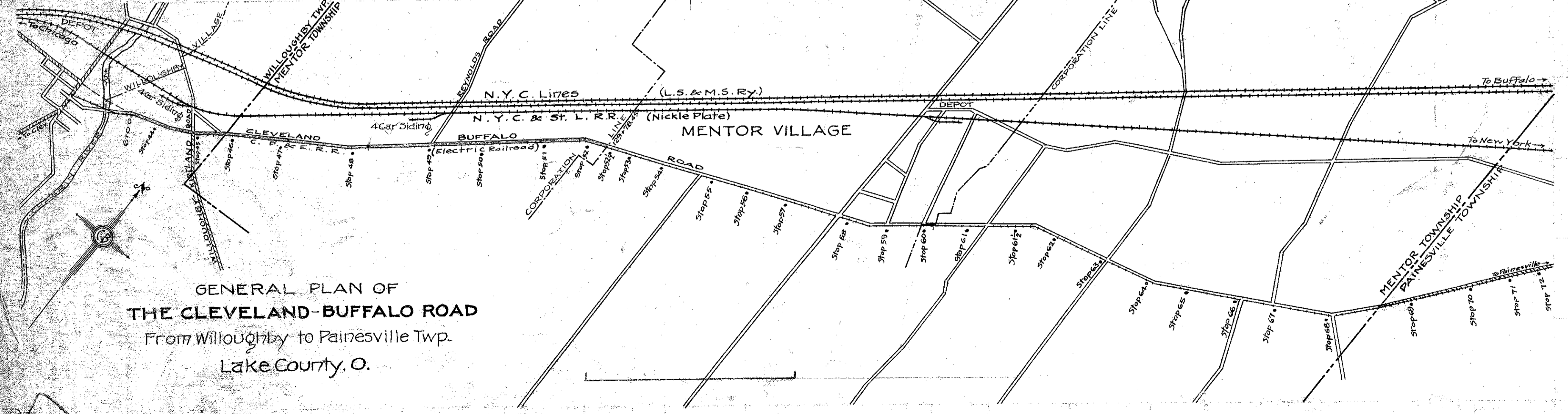
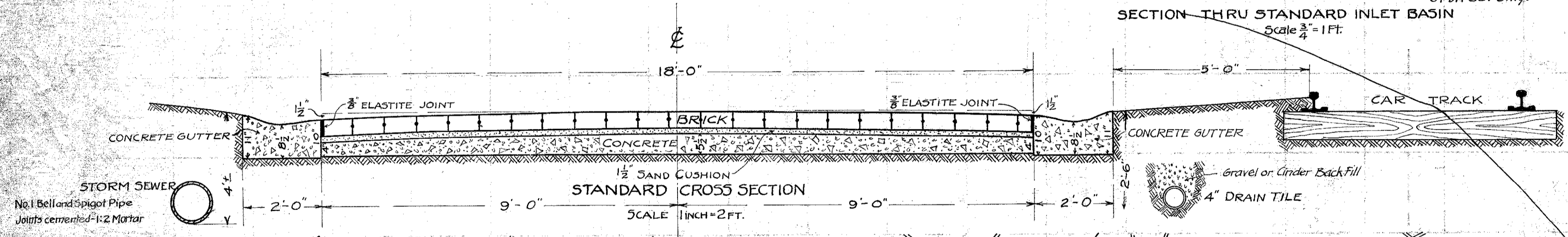
APPROXIMATE QUANTITIES

Grading	11,029.9	Cu. Yds.
Excavation	4,440.5	" "
Fill (possible within the lines of the right of way - to be made in each section so far as the excavation will provide.)		
Brick Pavement on Concrete Foundation	24,757	Sq. Yds.
Concrete Gutter	24,757	Lin. Ft.
Concrete Headers	22	Lin. Ft.
4" Vitrified Drain Tile between car track and pavement	12,378	Lin. Ft.
10" Pipe Sewer	4,620	" "
12" Pipe Sewer	5,567	" "
Inlet Basins including Yand T connections for Drain Tile	48	" "
12" x 12" Y ₄ in storm sewer	5	" "
12" x 10" Y ₄ " "	14	" "
10" x 10" Y ₄ " "	10	" "
7-24" Poplar Trees at station 81 to be removed.		



Specification: 1 part Portland cement
2 parts fine aggregate - 4 parts gravel
tamped and floated to a true surface.

C.P.&E. R.R. Bridge Top of Rail Elev. 654.77
Proposed High Level Bridge Floor Elev. 693.0



CONSTRUCTION BUREAU
APR 6 1915
GROUND ENGINEER

