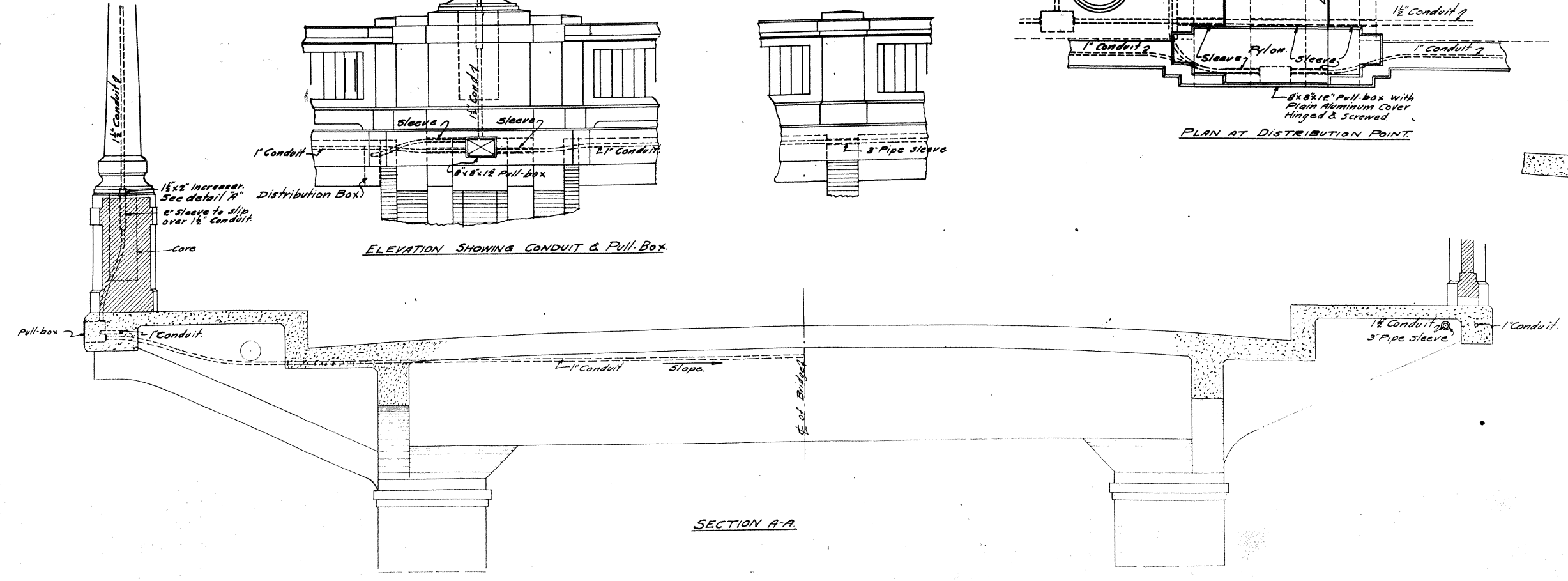
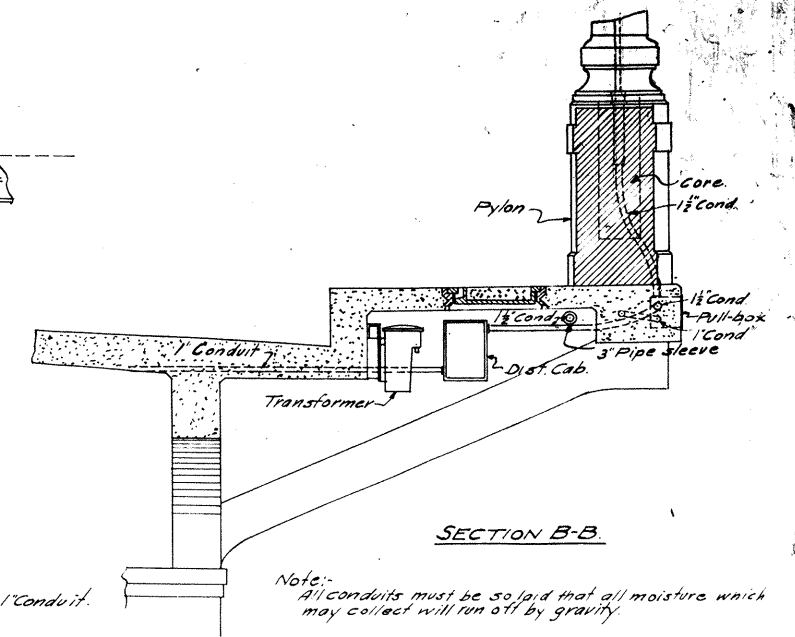
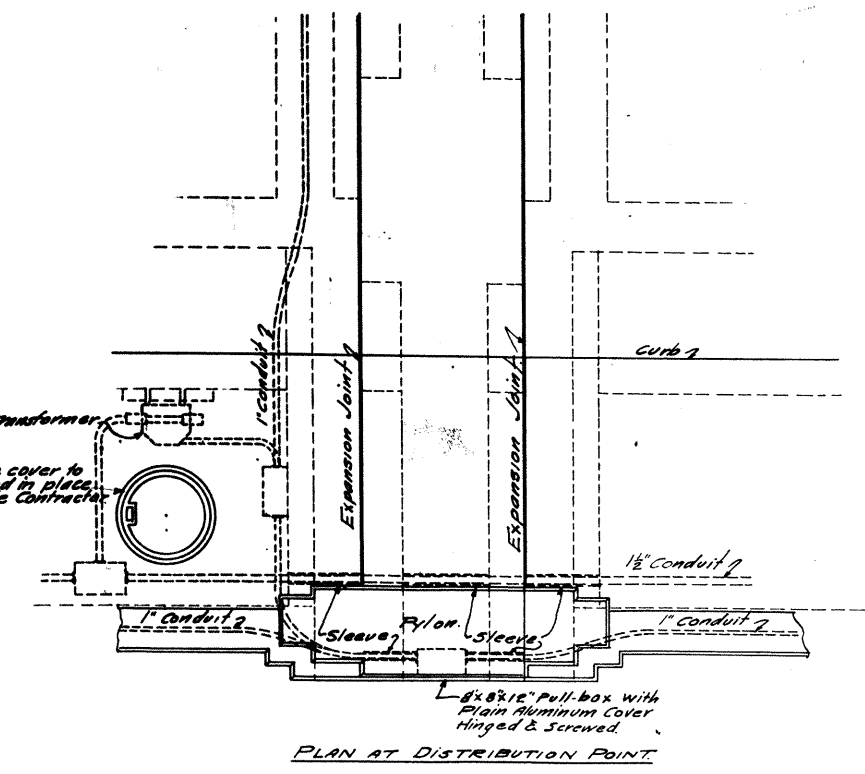
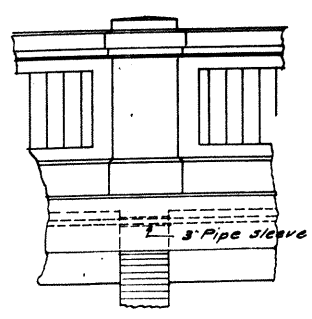
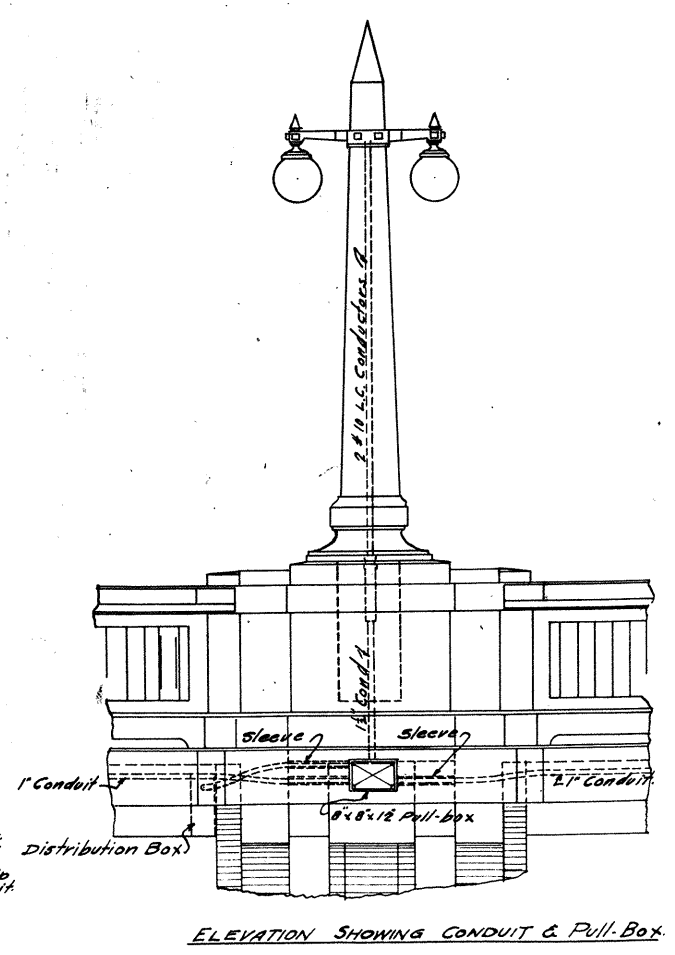


DETAIL-A



THE WATSON ENGINEERING COMPANY
CLEVELAND, OHIO.

CHAGRIN RIVER VIADUCT
WILLOUGHBY
LAKE COUNTY, OHIO
G.C. HARRIS COUNTY ENGINEER

REVISED ELECTRIC WIRING PLAN

Dwg. Made	Dr. by	Tk. by	Chk. by	Date	App. by	Date
3-23-20	J.L.S.	J.L.S.				
Rev. by	Date	Remarks	Scale - Detail 1/8" = 1'-0"			
			Print Made			

826-13a