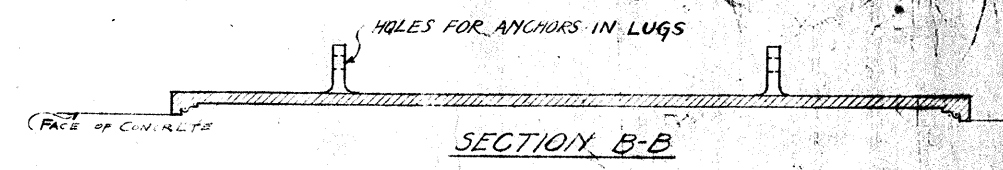
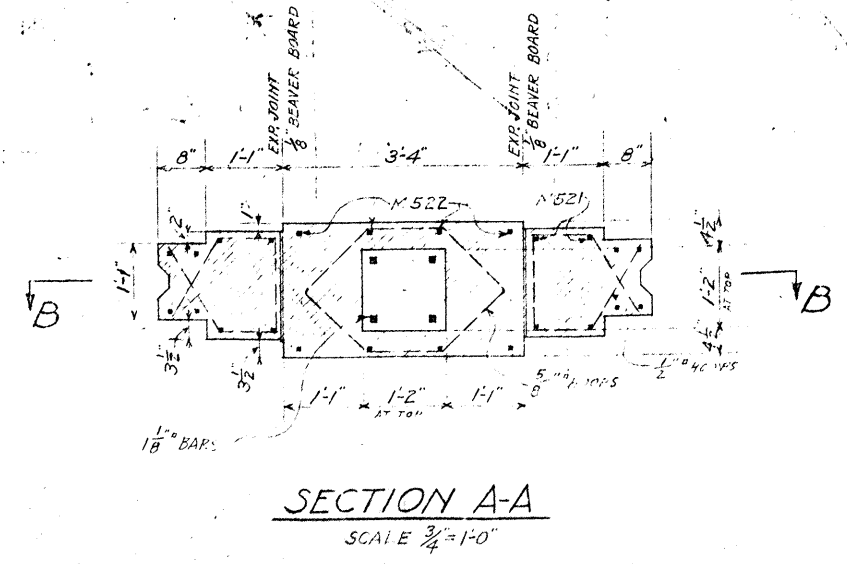
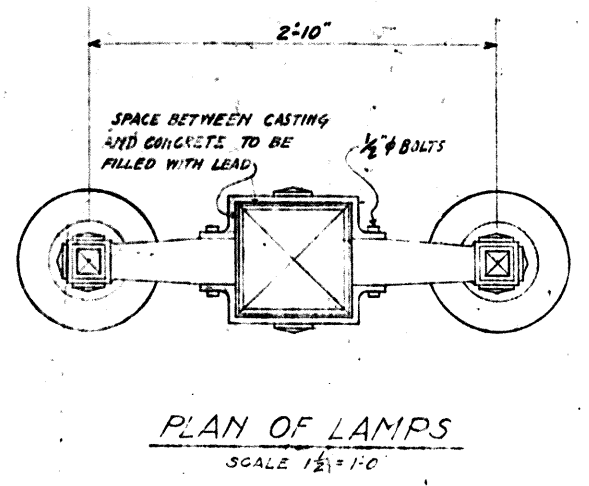
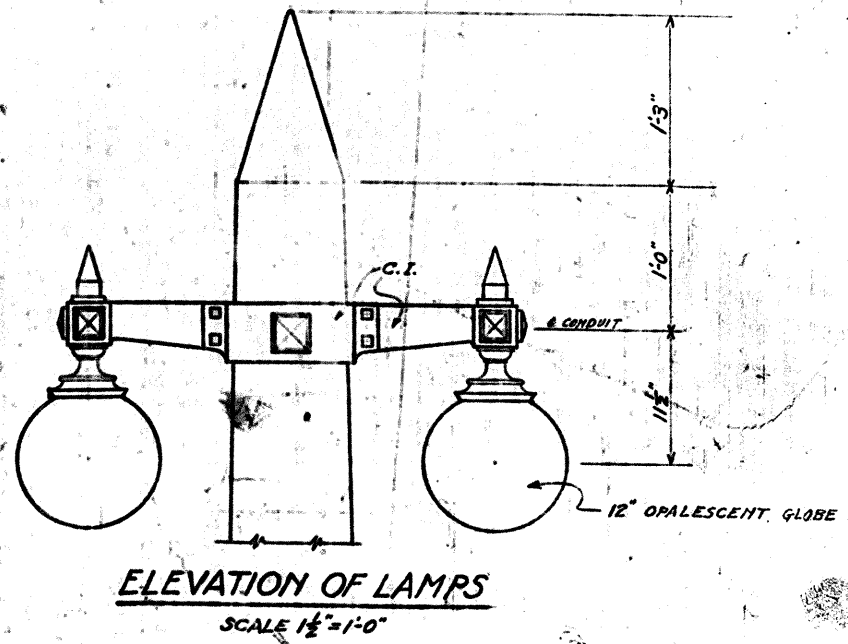


- METHOD OF CONSTRUCTION**
- 1) Pylon to be poured as shown with core.
 - 2) Lamp post to be precast bottom side up with conduits as shown.
 - 3) Post to be placed on a bed of cement mortar after careful preparation of the pylon top as to alignment and elevation. Great care should be used in setting up lamp posts so as to secure perfect alignment and proper conduit connections.
 - 4) After post is properly placed pour concrete (1-1/2 mix with 1/2 gravel aggregate) to within 6" of the top of the pylon core, being careful to thoroughly ram the concrete in the core.
 - 5) After concrete has taken its initial set, pour the remaining 6" of the core with a (1-2 grout) and fill the holes in the post with a concrete mix exactly the same as the mix, for the rest proper being careful to get a smooth and uniform finish to harmonize with the balance of the post.



WILLOUGHBY VIADUCT
LAKE COUNTY, OHIO

WILLIAM E. THOMPSON
JAMES C. PHILLIPS CLARENCE A. HINE
FRED P. FRESHLEY HUBERT J. WRIGHT
COUNTY COMMISSIONERS

W. ALBERT DAVIS, COUNTY AUDITOR.

C. C. HARRIS - C. C. HADDEN,
COUNTY ENGINEERS.

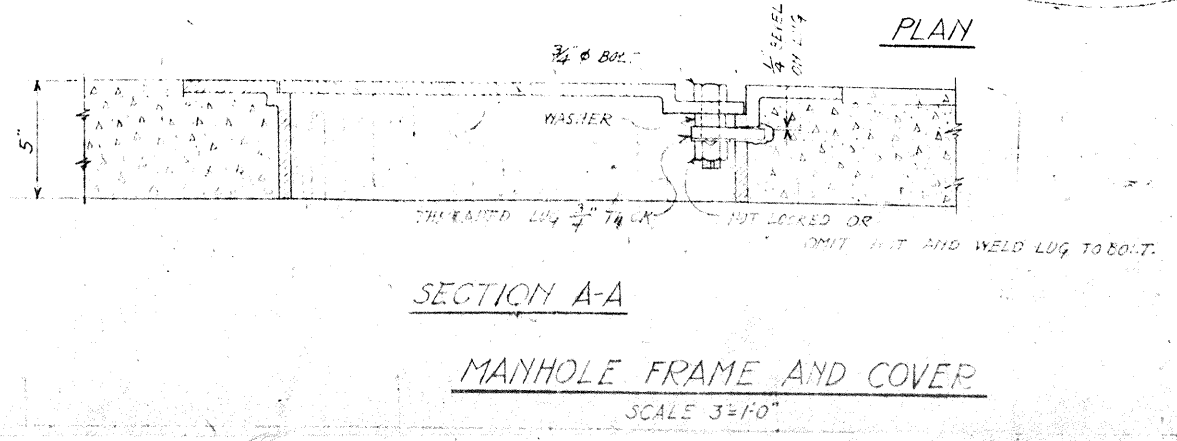
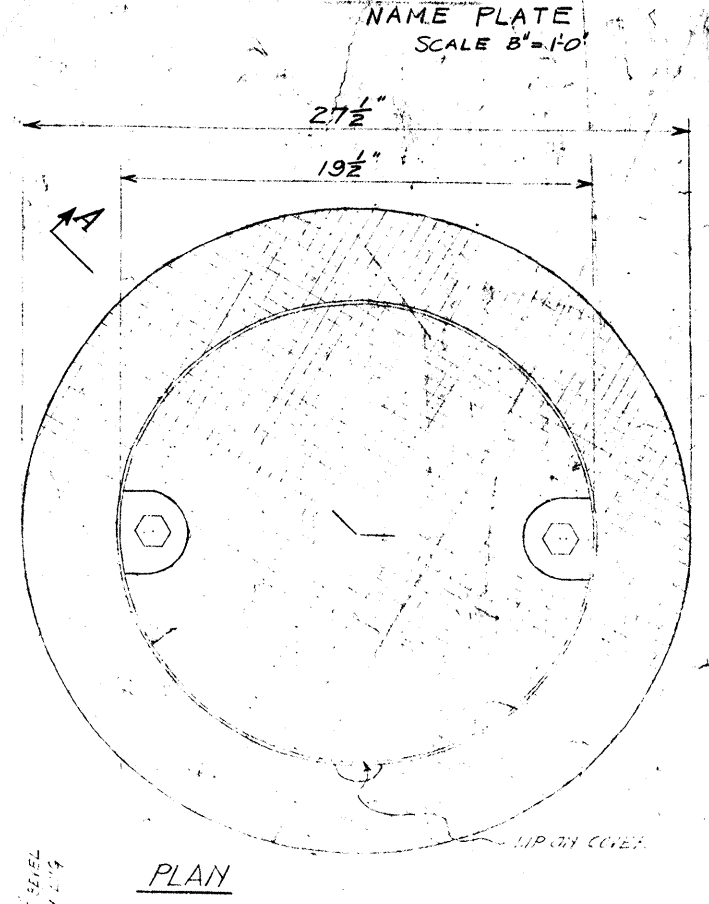
WILBUR J. WATSON - W. P. BROWN,
CONSULTING ENGINEERS, CLEVELAND.

THE KING BRIDGE COMPANY
CONTRACTORS, CLEVELAND

1920

34"

2-3"



THE WATSON ENGINEERING COMPANY
CLEVELAND, OHIO.

CHAGRIN RIVER VIADUCT
WILLOUGHBY
LAKE COUNTY, OHIO.

C. C. HADDEN COUNTY ENGINEER

DETAILS OF LAMP POST, MANHOLE
AND NAME PLATE

DATE APPROVED
MAY 28 1920 E.M.

SCALE 1/2"

826-12A