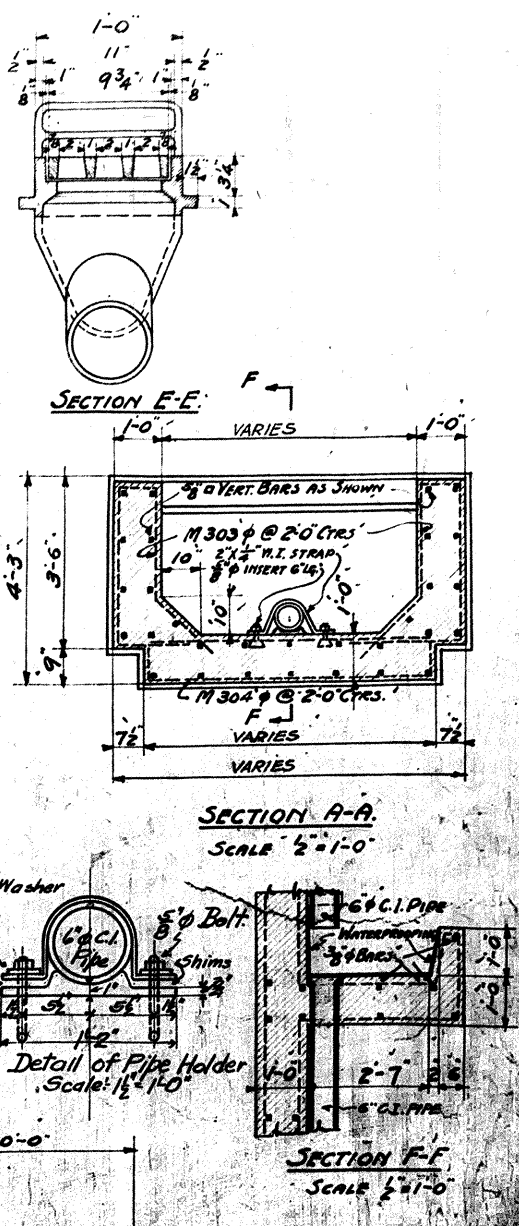
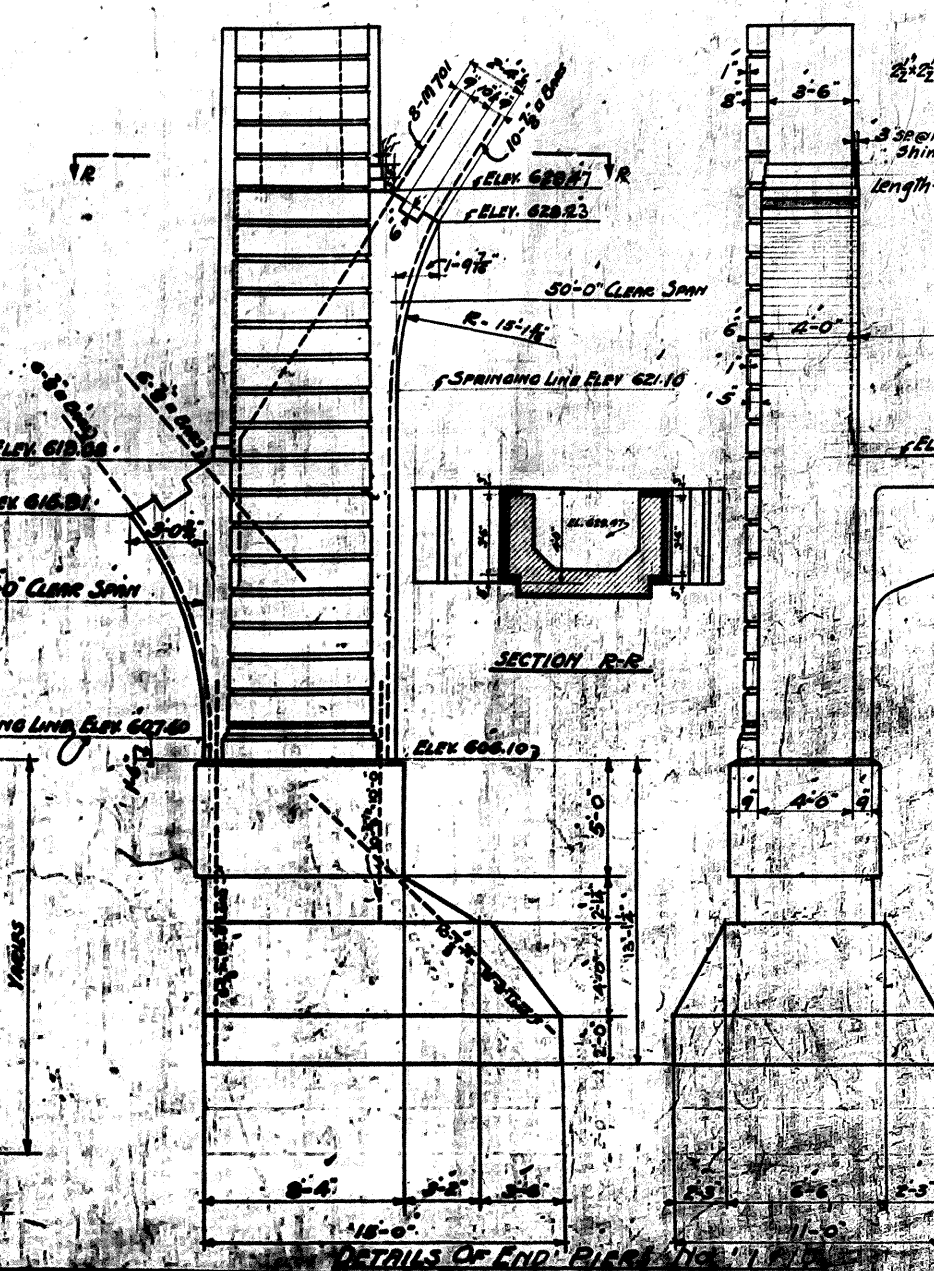


NOTE  
EL. S.M. AT RAIL = 653.92 FOR PIERS #1 & #10.  
EL. SLIDING PLATE = 648.05 FOR PIERS #1 & #10.



APPROVED July 21 1919

J. O. Phillips  
County Commissioner

W. L. Harris  
County Engineer

STATE HIGHWAY COMMISSIONER

THE WATSON ENGINEERING COMPANY  
CLEVELAND, OHIO

CHAGRIN RIVER VIADUCT,  
MILLOUGHBY,  
LANE COUNTY, OHIO

C.C. HARRIS, COUNTY ENGINEER

DETAILS OF  
PIERS AND SCUPPERS

DATE	BY	CHECKED	DATE	APPROVED
7-6-19	J. O. P.	C. H.	7-6-19	J. O. P.

326-6