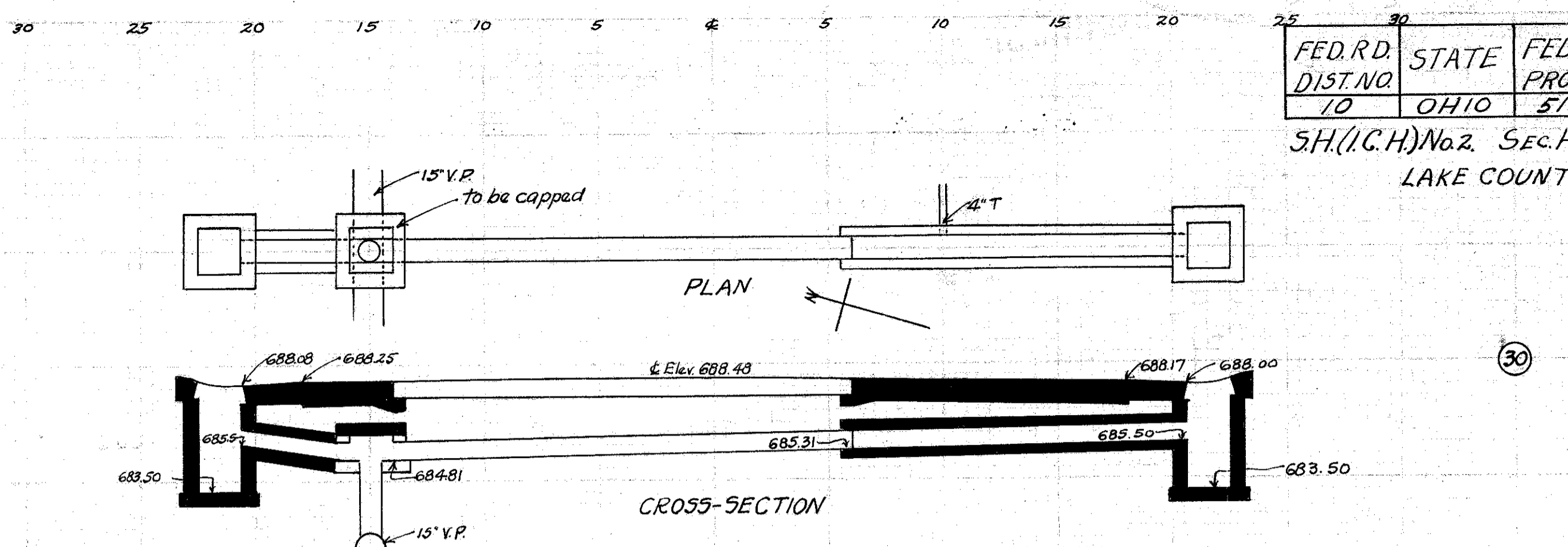


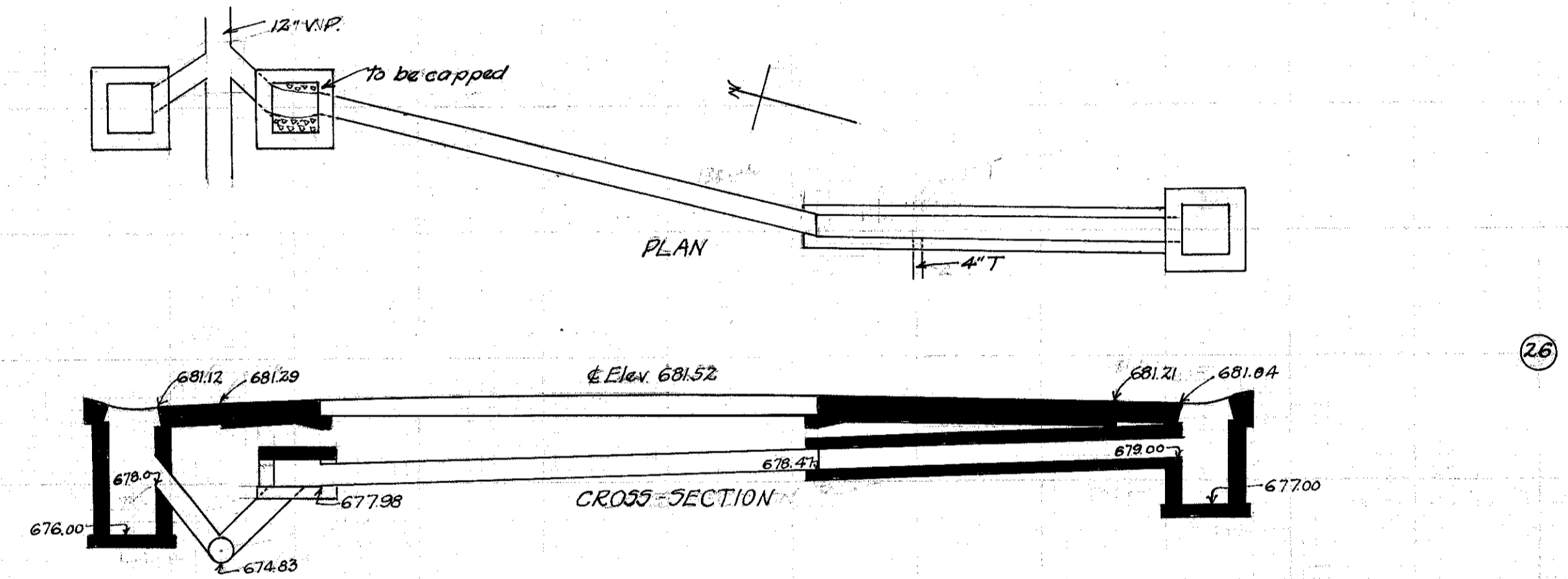
CULVERT DATA
 Type: Std. V.S.P. culvert Dr. #300
 Size: 10' x 18'
 Work Req.: Extend pres. culv. to R. with 10' x 16' std. V.P. enc. culvert. Connect 4" tile 4' R. of pres. pave. Build C.B. R+L. On L. connect to pres. sewer with 10' x 4' V.P. enc. Cap old I.B. on L.
 Drawn by Cumings + Plummer Checked by *L.A. Breen*
 Date 3/2/28 Date 3-12-28 Divn. Engr. Sta. 141+98 to Sta 142+04

EST. QUANTITIES
 Exc. 4.3 cu. yds.
 Con 1-8 1.63 cu. yds.
 Con 1-5 1/2 (precast cap) 0.2 cu. yds.
 Reinf. Steel 22 lbs.
 10" V.P. 16 lin. ft.
 10' x 4" double T 1
 C.B. (old covers reset) 2



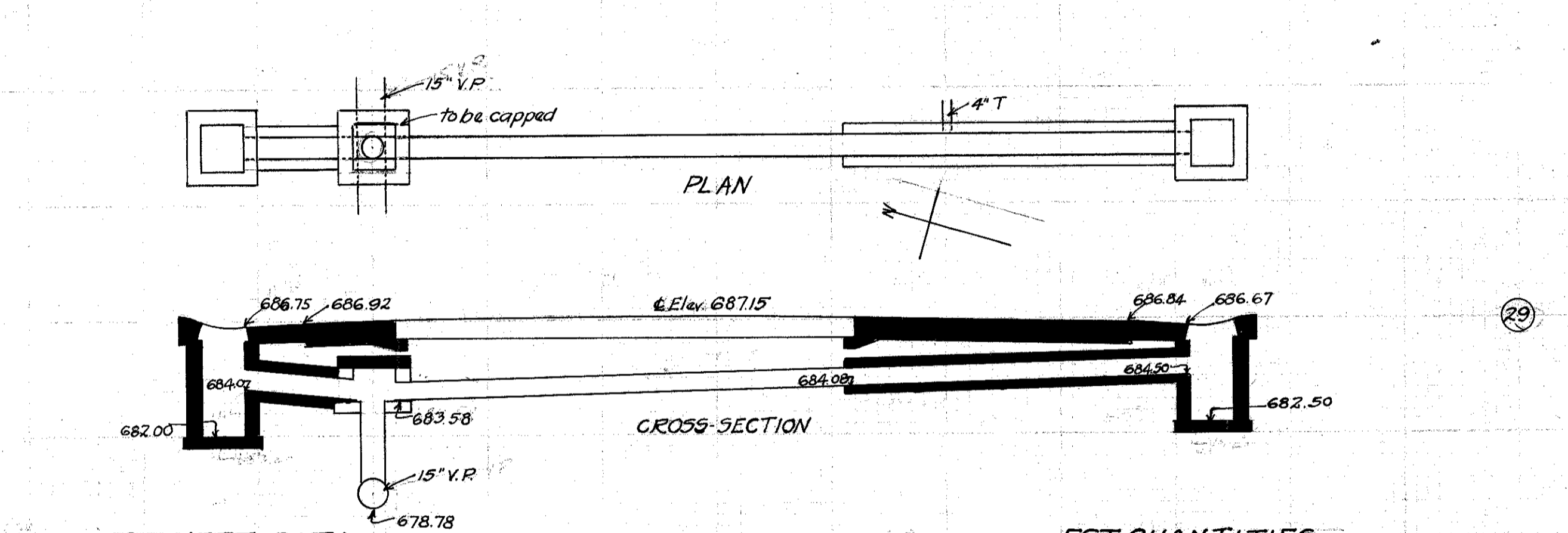
CULVERT DATA
 Type: Std. V.S.P. culvert Dr. #300
 Size: 10' x 20'
 Work Req.: Extend pres. culv. to R. with 10' x 16' std. V.P. enc. culvert. Connect 4" tile 4' R. of pres. pave. Build C.B. R+L. On L. connect to present sewer with 10' x 4' V.P. enc. Cap old I.B. on L.
 Drawn by Cumings + Plummer Checked by *L.A. Breen*
 Date 3/2/28 Date 3-12-28 Divn. Engr. Sta. 154+24

EST. QUANTITIES
 Exc. 4.3 cu. yds.
 Con 1-8 1.73 cu. yds.
 Con 1-5 1/2 (precast cap) 0.2 cu. yds.
 Reinf. Steel 22 lbs.
 10" V.P. 18 lin. ft.
 10' x 4" T 1
 C.B. (old covers reset) 2



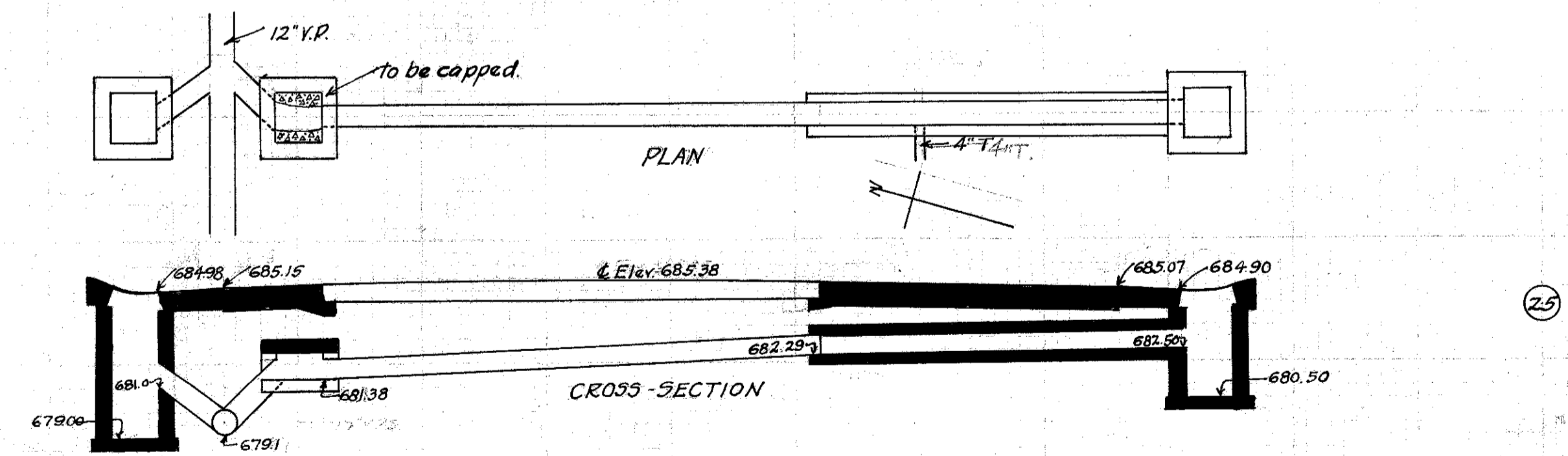
CULVERT DATA
 Type: Std. V.S.P. Culvert Dr. #300
 Size: 10' x 20'
 Work Req.: Extend pres. culv. to R. with 10' x 16' std. V.P. enc. culvert. Connect 4" tile 4' R. of pres. pave. Build C.B. R+L. On L. connect to present sewer with 10' x 4' V.P. Cap old I.B. on L.
 Drawn by Cumings + Plummer Checked by *L.A. Breen*
 Date 3/2/28 Date 3-12-28 Divn. Engr. Sta. 138+39 - 138+44

EST. QUANTITIES
 Exc. 3.8 cu. yds.
 Con 1-8 1.73 cu. yds.
 Con 1-5 1/2 (precast cap) 0.2 cu. yds.
 Reinf. Steel 22 lbs.
 10" V.P. 18 lin. ft.
 10' x 4" T 1
 C.B. (old covers reset) 2



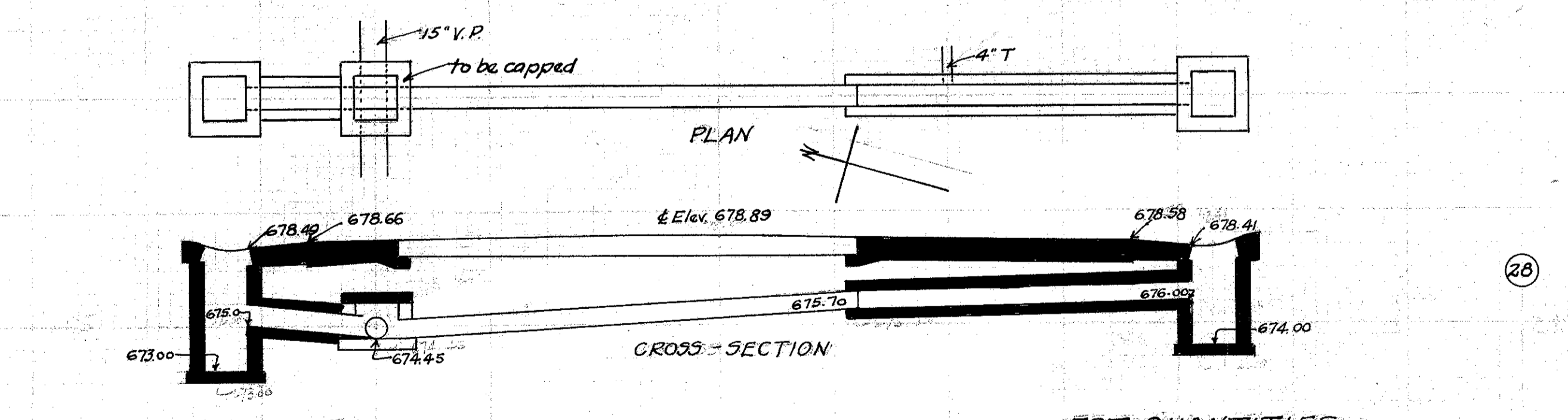
CULVERT DATA
 Type: Std. V.S.P. culvert Dr. #300
 Size: 10' x 20'
 Work Req.: Extend pres. culv. to R. with 10' x 16' std. V.P. enc. culvert. Connect 4" tile 4' R. of pres. pave. Build C.B. R+L. On L. connect to present sewer with 10' x 4' V.P. enc. Cap old I.B. on L.
 Drawn by Cumings + Plummer Checked by *L.A. Breen*
 Date 3/2/28 Date 3-12-28 Divn. Engr. Sta. 146+98

EST. QUANTITIES
 Exc. 3.8 cu. yds.
 Con 1-8 1.73 cu. yds.
 Con 1-5 1/2 (precast cap) 0.2 cu. yds.
 Reinf. Steel 22 lbs.
 10" V.P. 18 lin. ft.
 10' x 4" T 1
 C.B. (old covers reset) 2



CULVERT DATA
 Type: Std. V.S.P. culvert Dr. #300
 Size: 10' x 20'
 Work Req.: Extend pres. culvert to R. with 10' x 16' std. V.P. enc. culvert. Connect 4" tile 4' R. of pres. pave. Build C.B. R+L. On L. connect to pres. sewer with 10' x 4' V.P. Cap old I.B. on L.
 Drawn by Cumings + Plummer Checked by *L.A. Breen*
 Date 3/2/28 Date 3-12-28 Divn. Engr. Sta. 135+99

EST. QUANTITIES
 Exc. 4.4 cu. yds.
 Con 1-8 1.39 cu. yds.
 Con 1-5 1/2 (precast cap) 0.2 cu. yds.
 Reinf. Steel 22 lbs.
 10" V.P. 18 lin. ft.
 10' x 4" T 1
 C.B. (old covers reset) 2



CULVERT DATA
 Type: Std. V.S.P. culvert Dr. #300
 Size: 10' x 20'
 Work Req.: Extend pres. culv. to R. with 10' x 16' std. V.P. enc. culvert. Connect 4" tile 4' R. of pres. pave. Build C.B. R+L. On L. connect to present sewer with 10' x 4' V.P. enc. Cap old I.B. on L.
 Drawn by Cumings + Plummer Checked by *L.A. Breen*
 Date 3/2/28 Date 3-12-28 Divn. Engr. Sta. 143+98

EST. QUANTITIES
 Exc. 4.3 cu. yds.
 Con 1-8 1.73 cu. yds.
 Con 1-5 1/2 (precast cap) 0.2 cu. yds.
 Reinf. Steel 22 lbs.
 10" V.P. 18 lin. ft.
 10' x 4" T 1
 C.B. (old covers reset) 2