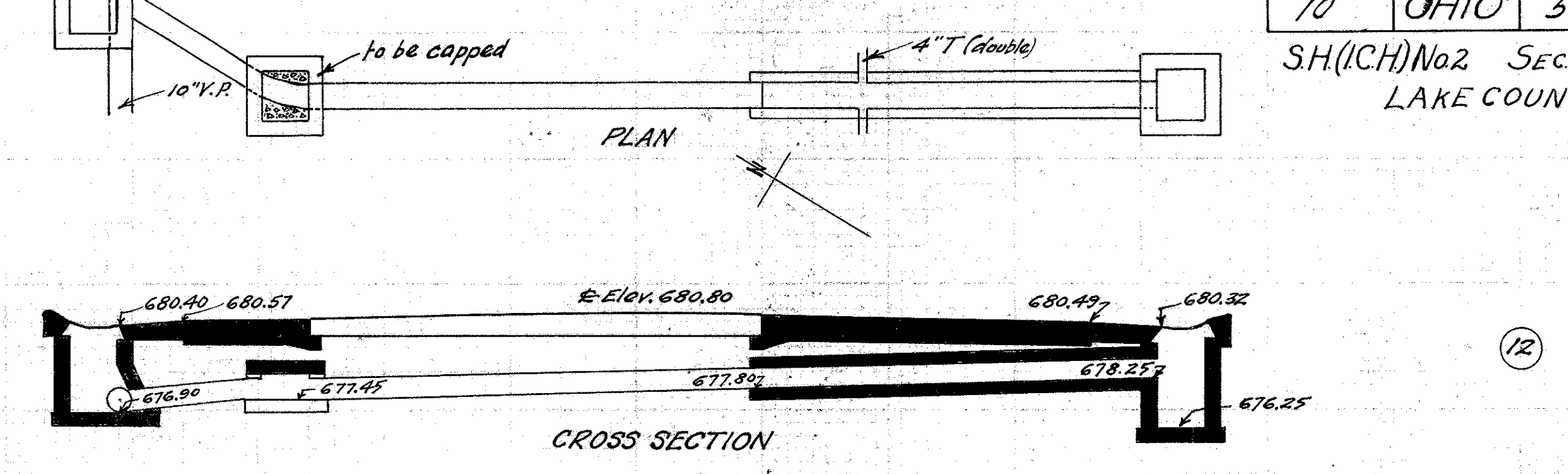


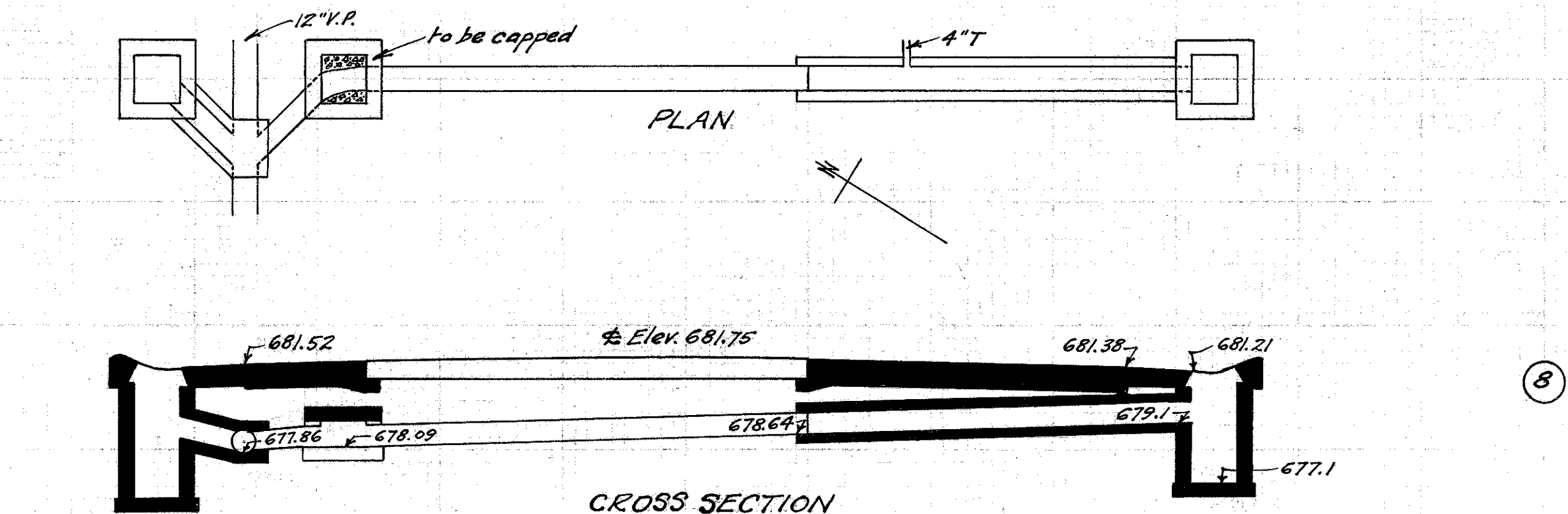
**CULVERT DATA**  
 Type Std. V.S.P. culvert Dr. #300  
 Size 10"x20'  
 Work Req: Extend present culvert to R with 10"x16" std. V.P. enc. culv. connect 4" tile 4" to R of present par. Build C.B. on R+L. On L connect to present sewer with 10"x4" V.P. enc. Cap old I.B. on L.  
 Drawn by Cumings & Plummer Checked by L.A. Breen  
 Date 2/29/28 Date 3-12-28 Div'n. Engr.

**EST. QUANTITIES**  
 Exc. 4.3 cu. yds.  
 Conc. 1-8 1.78 cu. yds.  
 Conc. 1-5 1/2 precast 0.2 cu. yds.  
 Reinf. steel 22 lbs.  
 10" V.P. 1 lin. ft.  
 10"x4" T 1  
 C.B. old covers reset 2  
 Sta. 36+99



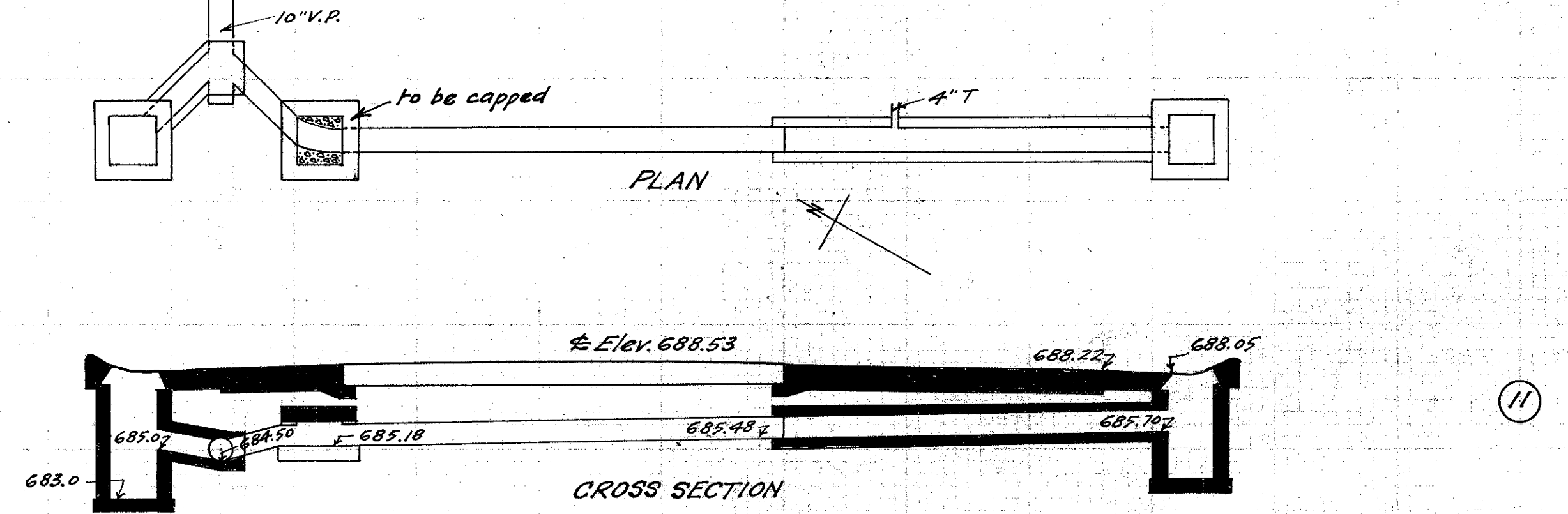
**CULVERT DATA**  
 Type Std. V.S.P. culvert Dr. #300  
 Size 10"x16'  
 Work Req: Extend present culvert to R with 10"x16" std. V.P. enc. culv. connect 4" tile 4" to R of present par. Build C.B. on R. On L I.B. to be built over present sewer Cap old I.B. on L.  
 Drawn by Cumings & Plummer Checked by L.A. Breen  
 Date 2/29/28 Date 3-12-28 Div'n. Engr.

**EST. QUANTITIES**  
 Exc. 4.0 cu. yds.  
 Conc. 1-8 1.49 cu. yds.  
 Conc. 1-5 1/2 precast 0.2 cu. yds.  
 Reinf. steel 22 lbs.  
 10" V.P. 14 lin. ft.  
 10"x4" T (double) 1  
 C.B. (old covers reset) 1  
 I.B. " " 1  
 Sta. 57+99



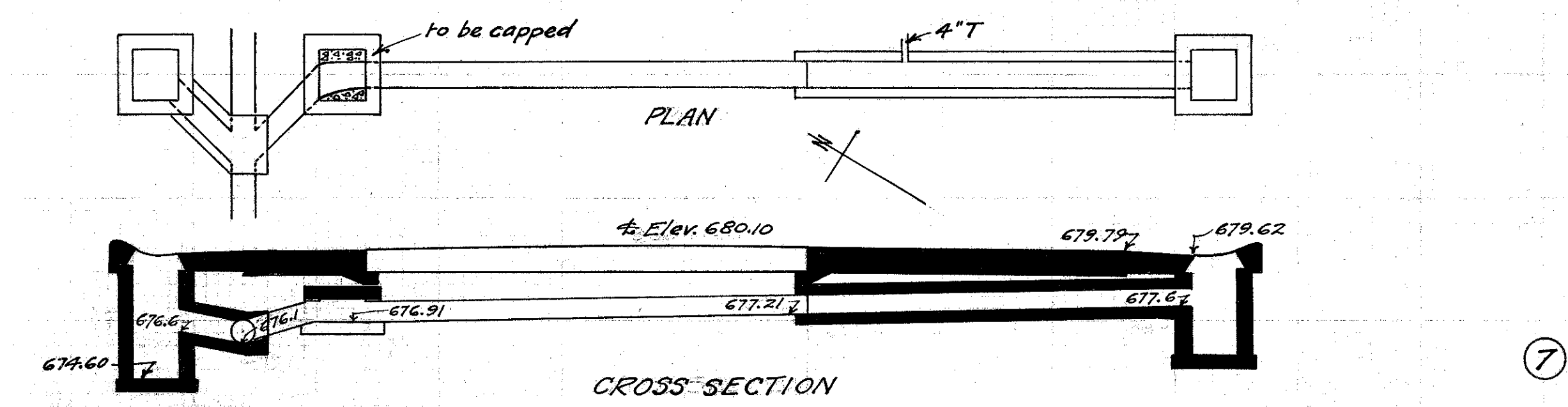
**CULVERT DATA**  
 Type Std. V.S.P. culvert Dr. #300  
 Size 10"x20'  
 Work Req: Extend present culvert to R with 10"x16" std. V.P. enc. culv. connect 4" tile 4" to R of present par. Build C.B. on R+L. On L connect to present sewer with 10"x4" V.P. enc. Cap old I.B. on L.  
 Drawn by Cumings & Plummer Checked by L.A. Breen  
 Date 2/29/28 Date 3-12-28 Div'n. Engr.

**EST. QUANTITIES**  
 Exc. 3.8 cu. yds.  
 Conc. 1-8 1.78 cu. yds.  
 Conc. 1-5 1/2 precast 0.2 cu. yds.  
 Reinf. steel 22 lbs.  
 10" V.P. 18 lin. ft.  
 10"x4" T 1  
 C.B. old covers reset 2  
 Sta. 31+50



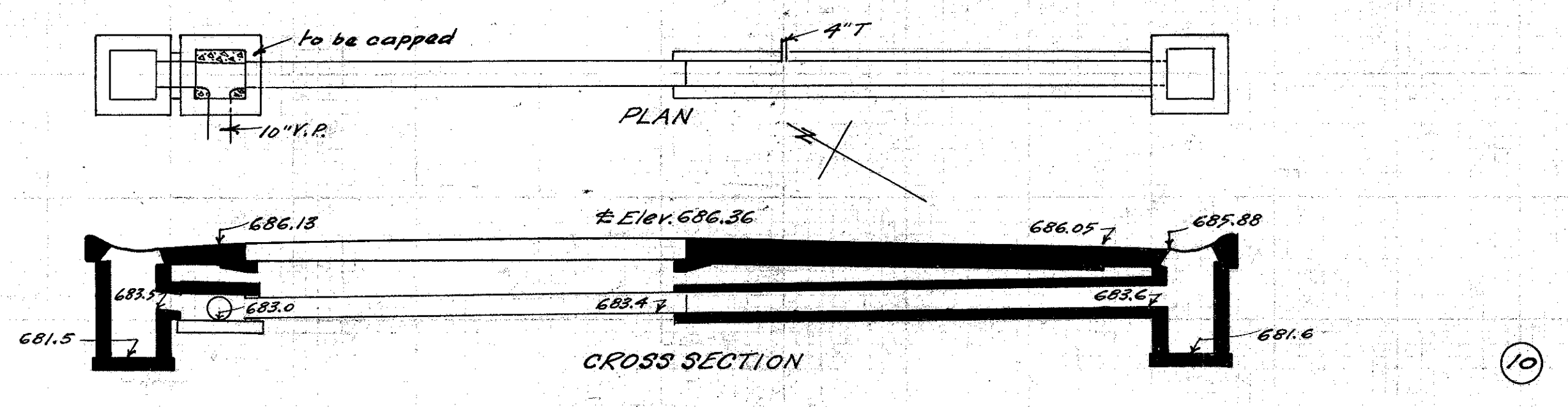
**CULVERT DATA**  
 Type Std. V.S.P. culvert Dr. #300  
 Size 10"x20'  
 Work Req: Extend present culvert to R with 10"x16" std. V.P. enc. culv. connect 4" tile 4" to R of present par. Build C.B. on R+L. On L connect to present sewer with 10"x4" V.P. enc. Cap old I.B. on L.  
 Drawn by Cumings & Plummer Checked by L.A. Breen  
 Date 2/29/28 Date 3-12-28 Div'n. Engr.

**EST. QUANTITIES**  
 Exc. 3.9 cu. yds.  
 Conc. 1-8 1.78 cu. yds.  
 Conc. 1-5 1/2 precast 0.2 cu. yds.  
 Reinf. steel 22 lbs.  
 10" V.P. 18 lin. ft.  
 10"x4" T 1  
 C.B. (old covers reset) 2  
 Sta. 53+0



**CULVERT DATA**  
 Type Std. V.S.P. culvert Dr. #300  
 Size 10"x20'  
 Work Req: Extend present culvert to R with 10"x16" std. V.P. enc. culv. connect 4" tile 4" to R of present par. Build C.B. on R+L. On L connect to present sewer with 10"x4" V.P. enc. Cap old I.B. on L.  
 Drawn by Cumings & Plummer Checked by L.A. Breen  
 Date 2/29/28 Date 3-12-28 Div'n. Engr.

**EST. QUANTITIES**  
 Exc. 3.6 cu. yds.  
 Conc. 1-8 1.78 cu. yds.  
 Conc. 1-5 1/2 precast 0.2 cu. yds.  
 Reinf. steel 22 lbs.  
 10" V.P. 18 lin. ft.  
 10"x4" T 1  
 C.B. old covers reset 2  
 Sta. 25+99



**CULVERT DATA**  
 Type Std. V.S.P. culvert Dr. #300  
 Size 10"x22'  
 Work Req: Extend present culvert to R with 10"x18" std. V.P. enc. culv. connect 4" tile 4" to R of present par. Build C.B. on R+L. Connect to present sewer with 10"x8" V.P. enc. Cap old I.B. on L.  
 Drawn by Cumings & Plummer Checked by L.A. Breen  
 Date 2/29/28 Date 3-12-28 Div'n. Engr.

**EST. QUANTITIES**  
 Exc. 4.1 cu. yds.  
 Conc. 1-8 1.92 cu. yds.  
 Conc. 1-5 1/2 precast 0.2 cu. yds.  
 Reinf. steel 22 lbs.  
 10" V.P. 20 lin. ft.  
 10"x4" T 1  
 C.B. (old covers reset) 2  
 Sta. 42+49