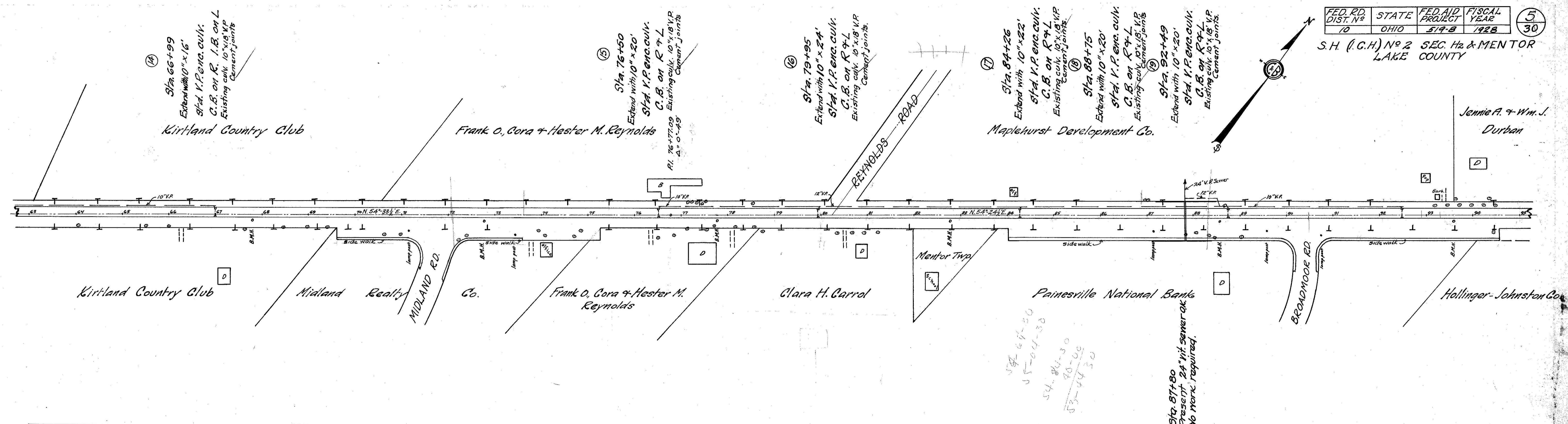


S.H. (I.C.H.) N^o 2 SEC. H₂ & MENTOR LAKE COUNTY



B.M. #13 Sta. 68+46
Spike in side 48" cherry
29' 60" R. of R.
Elev. = 688.87

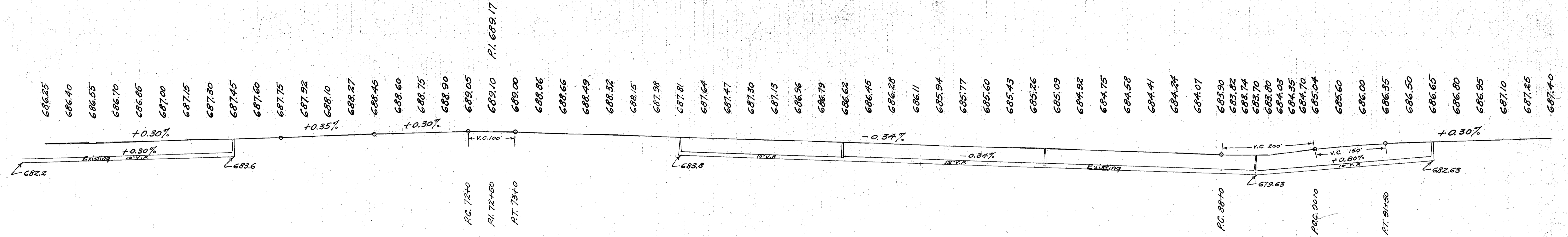
B.M. #14 Sta. 74+86
Spike in rook 15" ash
34' 60" R. of R.
Elev. = 688.44

B.M. #15 Sta. 81+24
Spike in rook 15" M.
38' 60" R. of R.
Elev. = 687.69

B.M. #16 Sta. 87+12
x on S.W. cor. S. wall
55.5' 60" R. of R.
Elev. = 684.43

B.M. #17 Sta. 93+23
Spike in rook 24" M.
21' 60" L. of R.
Elev. = 687.99

Grade line shown is ± profile



Station	Surface Elevation	Proposed Elevation
63	686.25	686.25
64	686.51	686.40
65	686.82	686.55
66	687.15	686.70
67	687.44	686.85
68	687.67	687.00
69	688.09	687.15
70	688.48	687.30
71	688.75	687.45
72	689.04	687.60
73	689.97	687.75
74	688.66	687.90
75	688.32	688.05
76	688.04	688.20
77	687.61	688.35
78	687.30	688.50
79	686.95	688.65
80	686.58	688.80
81	686.24	688.95
82	685.85	689.10
83	685.58	689.25
84	685.27	689.40
85	684.92	689.55
86	684.53	689.70
87	684.19	689.85
88	683.76	689.99
89	683.78	686.46
90	684.99	686.83
91	685.95	687.09
92	686.46	687.25
93	686.83	687.40
94	687.09	
95	687.59	

Exc. = 1220.4 cu. yds.
Emb. +20% = 434.2 cu. yds.
Waste = 786.2 cu. yds.

Exc. = 959.2 cu. yds.
Emb. +20% = 585.1 cu. yds.
Waste = 374.1 cu. yds.

Exc. = 960.5 cu. yds.
Emb. +20% = 378.4 cu. yds.
Waste = 582.1 cu. yds.