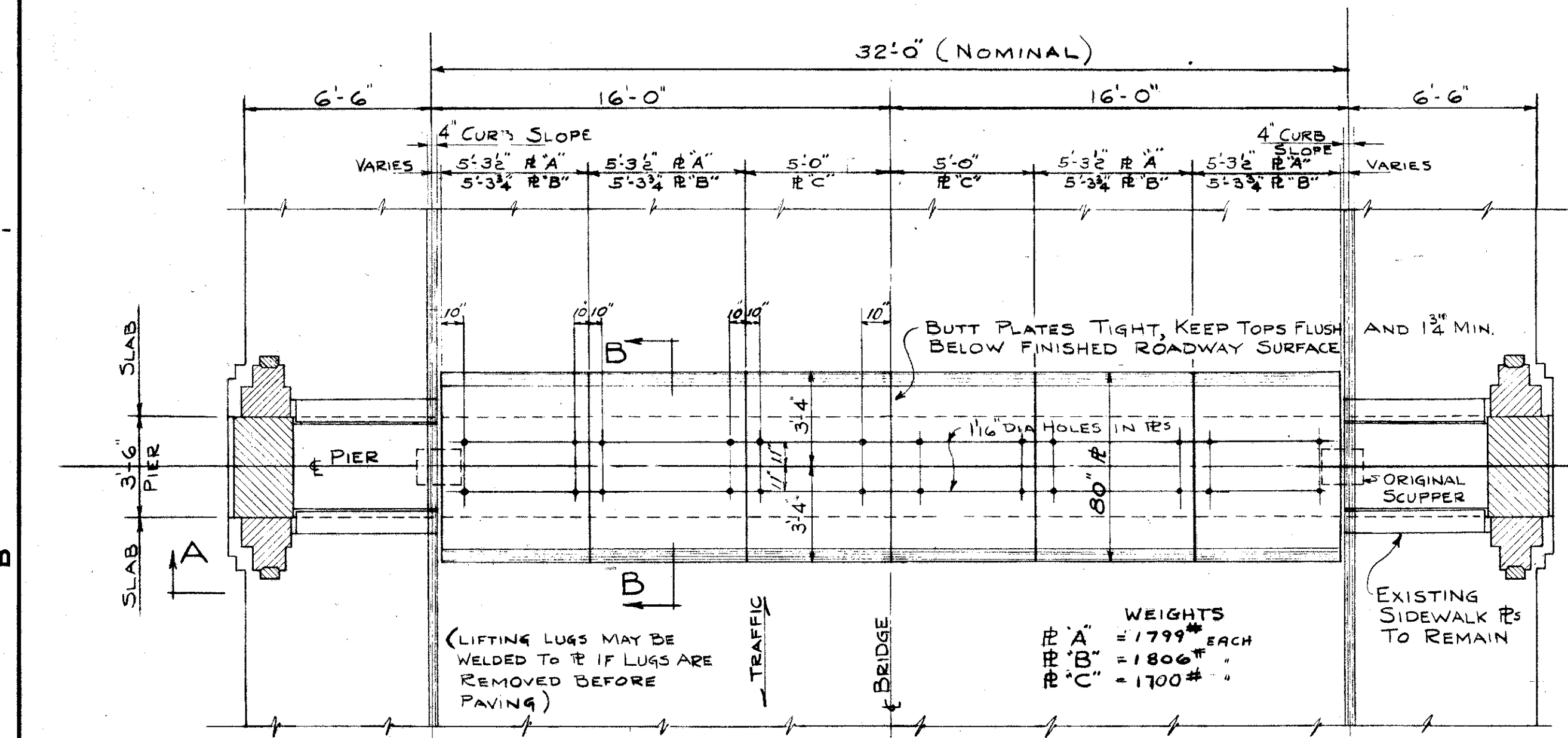


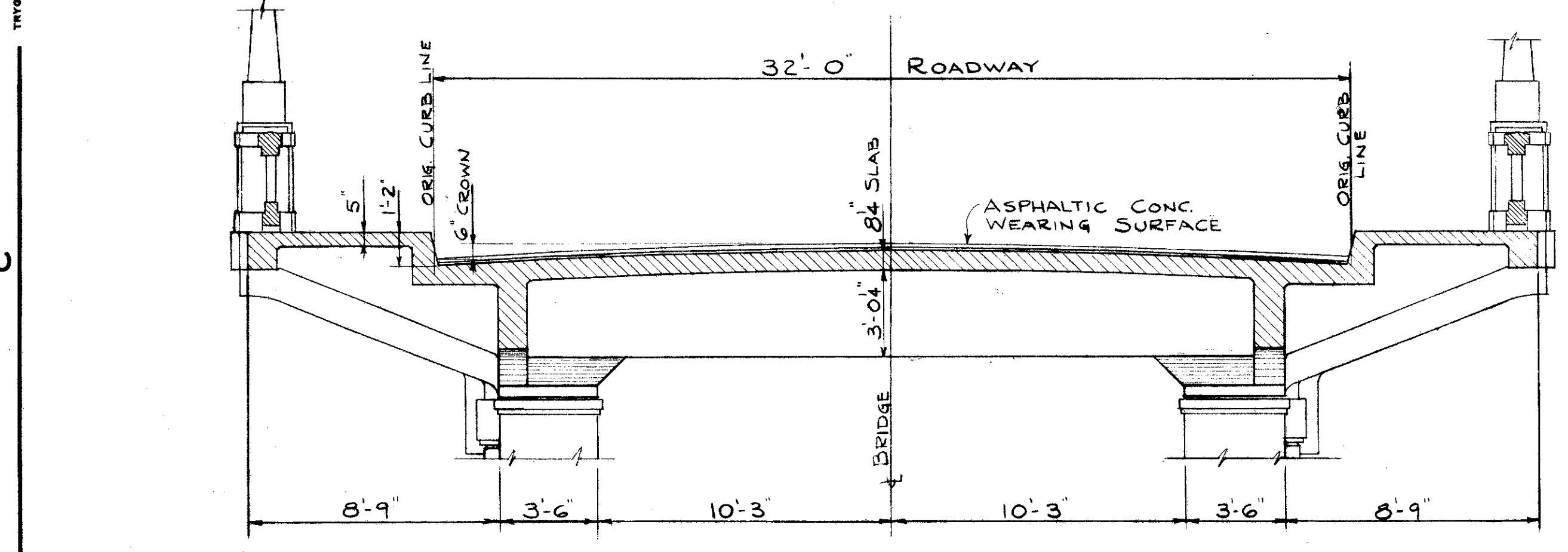
FED. RD. DIVISION	STATE	PROJECT	2 2
	OHIO	STATE	

LAK - 20 - 5.60

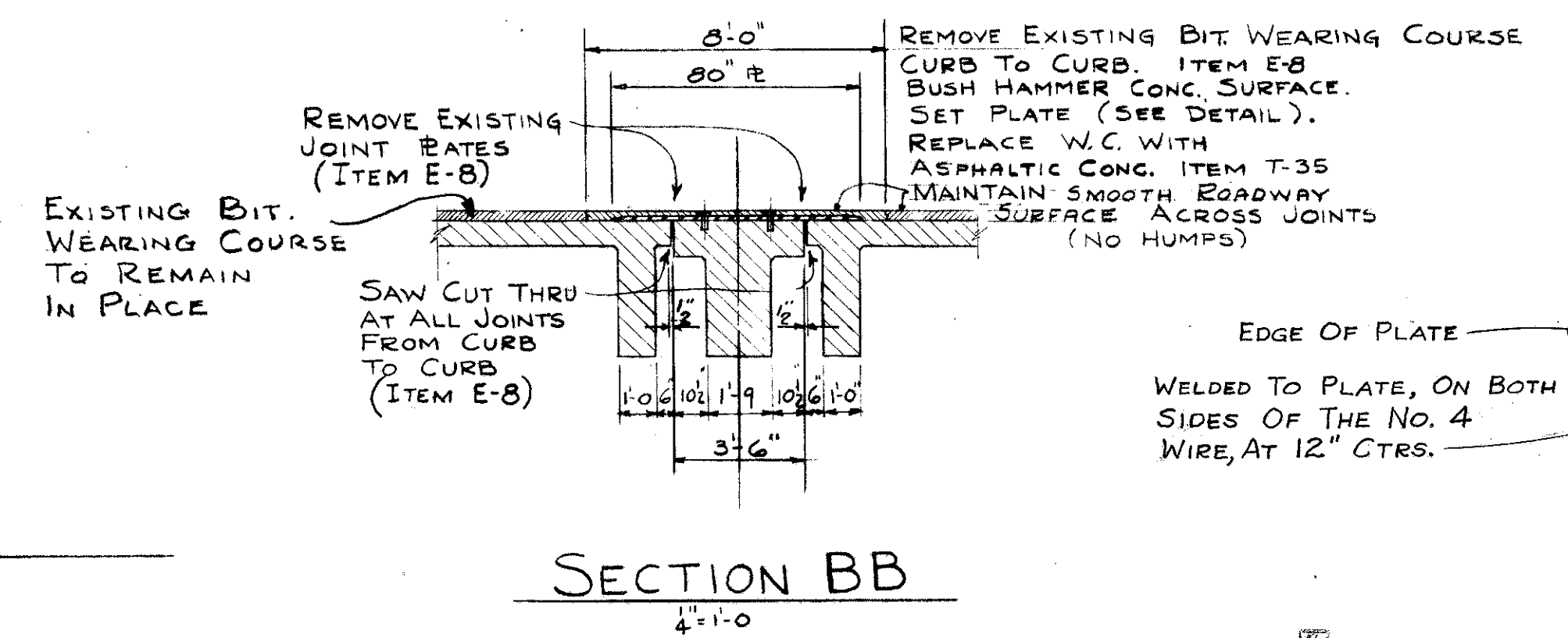


TYPICAL PLAN AT PIERS

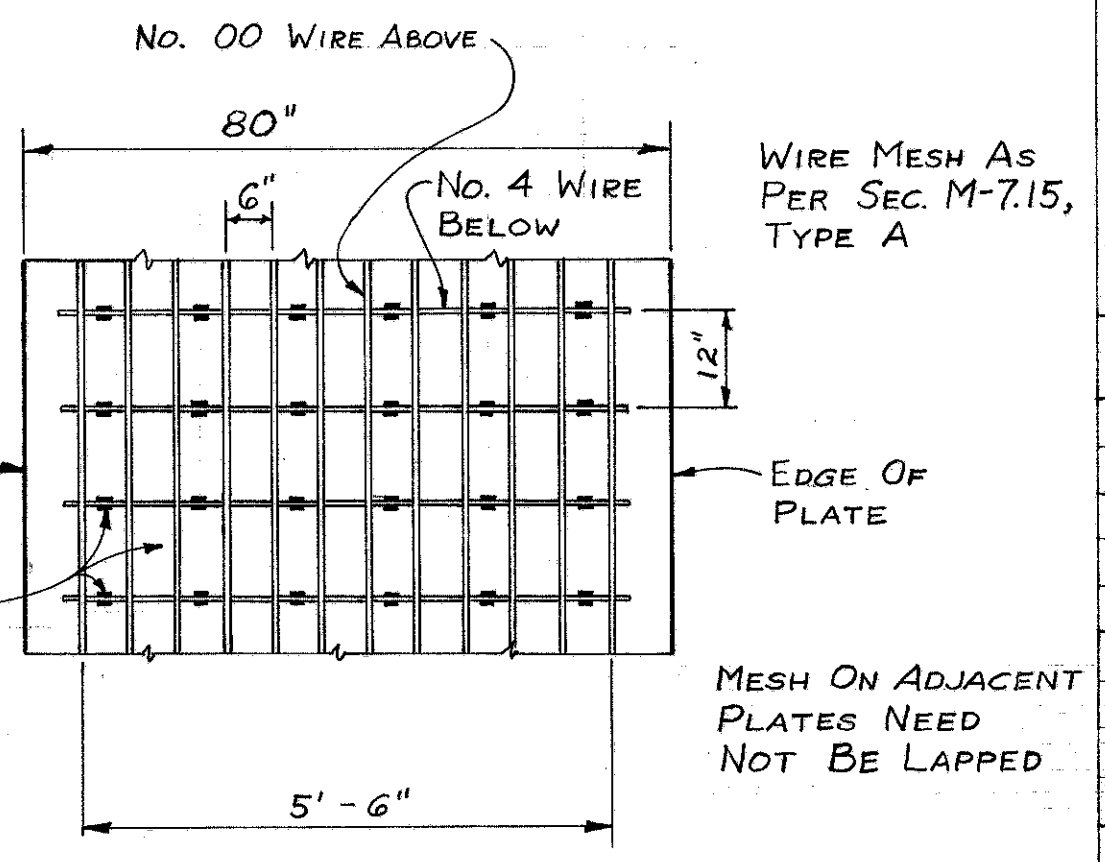
20 PLATES "A" REQ'D  
20 PLATES "B" REQ'D  
20 PLATES "C" REQ'D



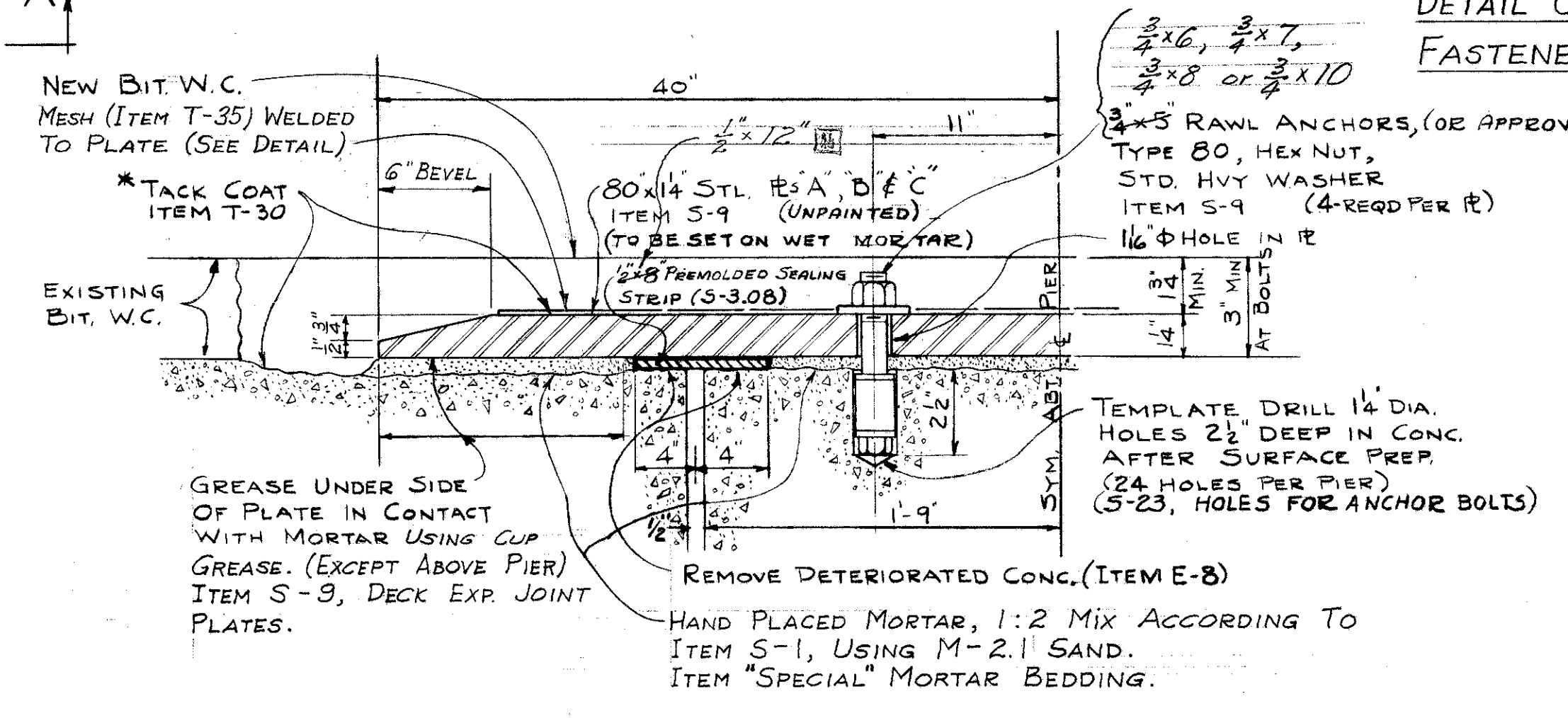
SECTION AA



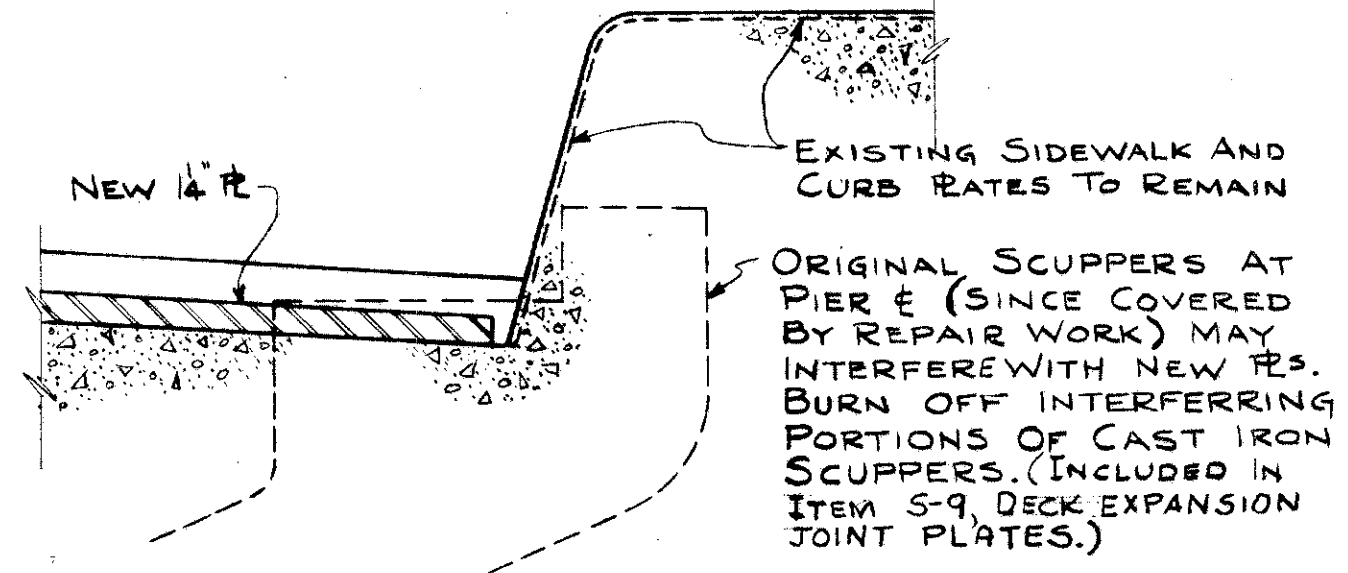
SECTION BB



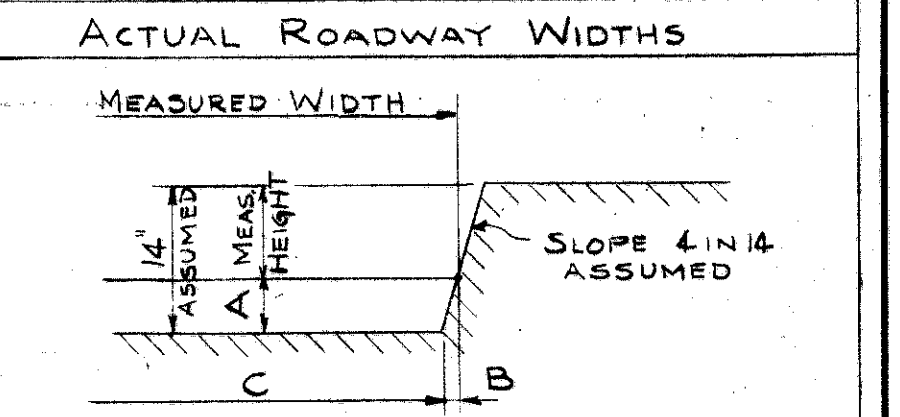
DETAIL OF WIRE MESH, FASTENED TO PLATE



DETAIL HALF SECTION THRU PLATES



TYPICAL CURB DETAIL



PIER	FIELD HEIGHT	A	B	FIELD WIDTH	C
1	10 3/4	3 3/4	.93	31-5 1/2	31-3 1/2
2	11 3/8	2 5/8	.75	31-5 1/2	31-4
3	11	3	.86	31-5 3/4	31-4
4	11	3	.86	31-5 3/4	31-4
5	12	2	.57	31-5 3/4	31-4 3/4
6	10 3/4	3 3/4	.93	31-6	31-4
7	11 3/4	2 1/4	.64	31-6	31-4 3/4
8	12	2	.57	31-5 3/4	31-4 3/4
9	10 1/4	3 3/4	1.07	31-7	31-5
10	9 3/4	4 1/4	1.22	31-7	31-4 1/2

WIDTH MEASURED CURB TO CURB ON SURFACE OF EXISTING PAYMENT ON PIER.

GENERAL NOTES:

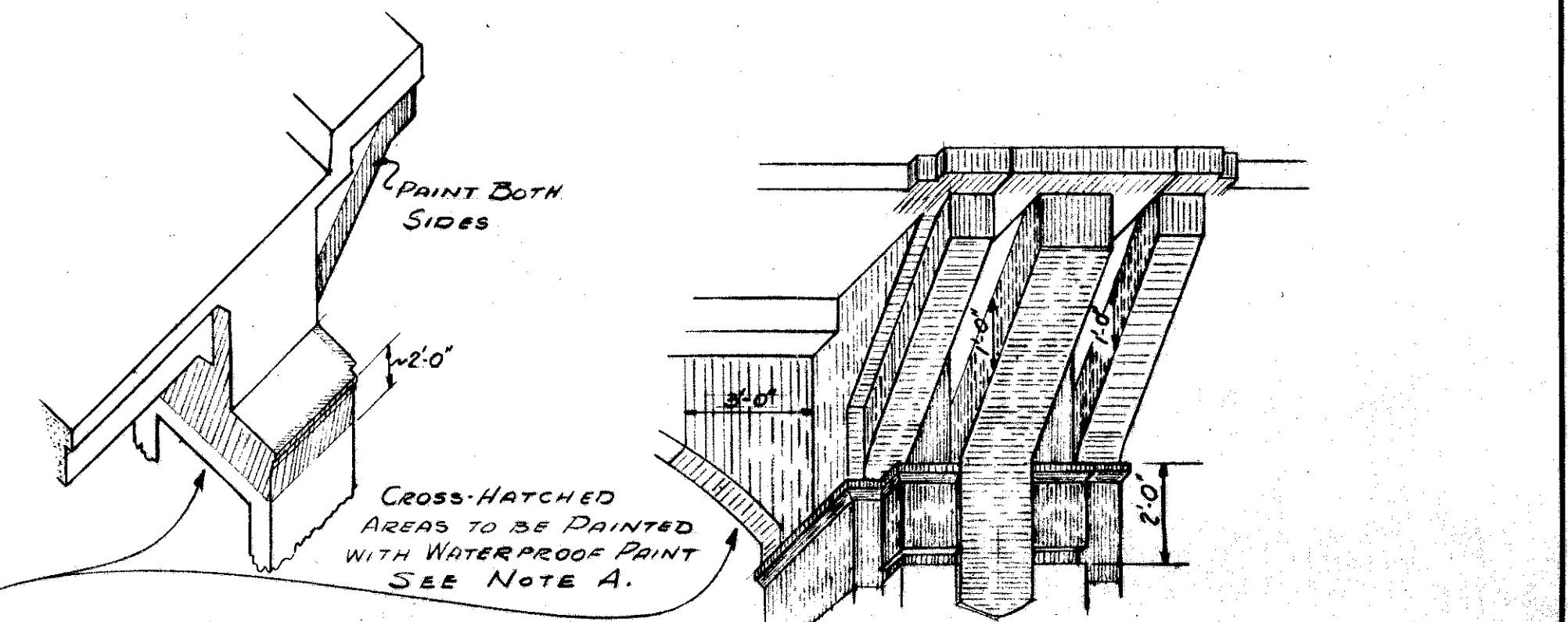
1. THE STANDARD SPECIFICATIONS OF THE STATE OF OHIO DEPARTMENT OF HIGHWAYS SHALL GOVERN THESE REPAIRS.
2. NO WORK SHALL BE DONE OUTSIDE THE DELINEATED AREAS WITHOUT THE ENGINEER'S APPROVAL IN WRITING.
3. THE WIRE MESH REINFORCING SHALL BE WELDED TO THE PLATES AS SHOWN AND SHALL BE CONSIDERED AS PAID FOR IN THE BID PRICE PER CUBIC YARD FOR ITEM T-35.
4. CONTRACTOR SHALL REMOVE AND TEMPORARILY STOCKPILE ALL EXISTING EXPANSION JOINT PLATES (ITEM E-8) SUCH PLATES AS ARE SALVAGEABLE MAY BE REMOVED FROM THE SITE BY LAKE COUNTY.
5. CONTRACTOR SHALL MAINTAIN AT ALL TIMES ONE EASTBOUND AND ONE WESTBOUND LANE OF 10 FEET MINIMUM WIDTH EACH. (SPEC. SEC. G-7.07)
6. WARNING SIGNS WILL BE POSTED BY THE STATE.
7. TRAFFIC SHALL NOT BE PERMITTED TO PASS OVER THE PLATES UNTIL 5 DAYS AFTER THEY HAVE BEEN PLACED.

ESTIMATED QUANTITIES			DESCRIPTION	AS-BUILT
ITEM E-8	280	Sq. Yd.	REMOVAL AND DISPOSAL OF EXISTING WEARING COURSE (ASPHALTIC CONCRETE) INCLUDING PAYMENT FOR OTHER REMOVAL, AS PER PLAN.	
SPECIAL	1700	Sq. Ft.	MORTAR BEDDING - AS PER PLAN.	196.3
SPECIAL	6000	Sq. Ft.	PAINTING WITH WATERPROOF PAINT, AS PER PLAN.	
S-3	630	Lin. Ft.	WATERPROOFING - PREMOLDED SEALING STRIP	
S-9	240	EACH	EXPANSION PLATE ANCHOR BOLTS	478
S-9	106,120	LBS	DECK EXPANSION JOINT PLATES, AS PER PLAN.	
S-23	240	EACH	HOLES FOR ANCHOR BOLTS	
T-35	16	Cu. Yd.	ASPHALTIC CONCRETE SURFACE COURSE, TYPE C (10-80), (INCLUDING WIRE MESH REINFORCING, AS PER PLAN.)	21.4
*T-30	28	GAL	BITUMINOUS TACK COAT, AS PER PLAN.	32

\* ITEM T-30 BITUMINOUS TACK COAT SEC. M-5.5 MS-2 OR RS-1 OR SEC. M-5.2 RC-1 OR RC-2 APPLIED AT THE RATE OF 0.1 GAL PER SQ. YD. SEE PROPOSAL NOTE.

NOTE A: CROSS-HATCHED AREAS TO BE PAINTED WITH WATERPROOF PAINT, USING 2 COATS OF "THOROSEAL" OR APPROVED EQUAL APPLIED IN CONFORMANCE WITH MANUFACTURER'S RECOMMENDATIONS AND AS DIRECTED BY THE ENGINEER.

ITEM SPECIAL - PAINTING WITH WATERPROOF



5-23-55	Note 7 added: cup grease and mortar specified; bond at ends of plate eliminated and Item S-3 re-worded
5-26-55	Detail of wire mesh welded to plates shown

TRYGVE HOFF AND ASSOCIATES  
4500 EUCLID AVE. CLEVELAND, OHIO  
GENERAL PLAN AND DETAILS  
REPAIR TO CHAGRIN RIVER VIADUCT  
BRIDGE No. LA-20-56, LAKE COUNTY, OHIO  
DESIGNED BY: JAW CHECKED BY: RLG APPROVED BY: