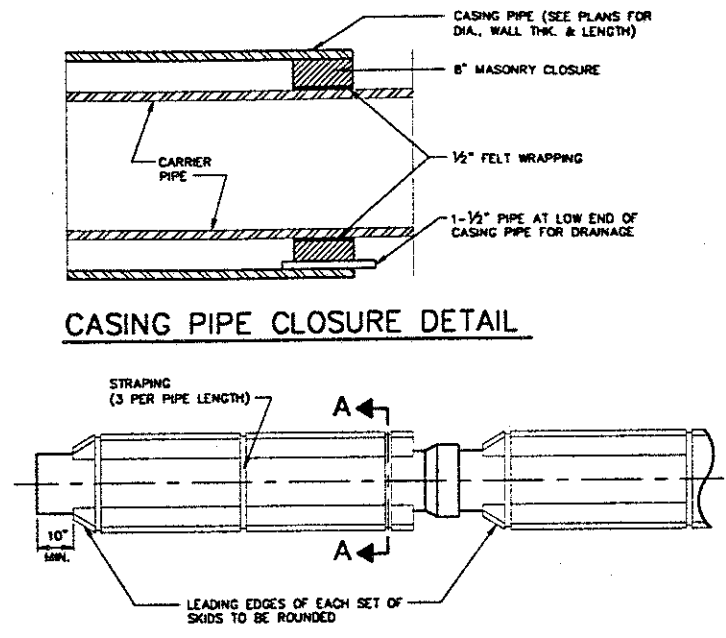
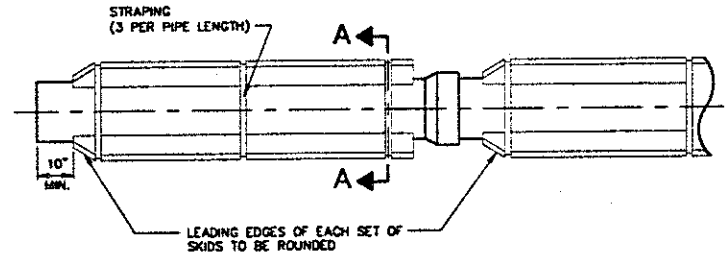


- NOTES:
1. MAXIMUM TRENCH WIDTH AT TOP OF PIPE SHALL BE O.D.+24" FOR ALL PIPES UP TO AND INCLUDING 24" I.D.; O.D.+30" FOR PIPE LARGER THAN 24" I.D.
  2. UNLESS OTHERWISE INDICATED PIPE BACKFILL UNDER DRIVES AND STRUCTURES SHALL BE NO.46 OR NO.57 LIMESTONE COMPACTED TO TOP OF TRENCH. THE BACKFILL MATERIAL SHALL EXTEND A MINIMUM OF 3 FEET BEYOND EACH EDGE OF DRIVE OR STRUCTURE. IN AREAS OUTSIDE OF PAVEMENT, SELECT ON-SITE GRANULAR MATERIAL APPROVED BY LAKE COUNTY SANITARY ENGINEER MAY BE USED IN LIFTS NOT TO EXCEED 6" LIFTS ABOVE BEDDING.
  3. ALL BEDDING SHALL BE CLASS "B" UNLESS OTHERWISE NOTED ON THE PLANS OR AUTHORIZED BY THE ENGINEER.
  4. SLAG BEDDING SHALL NOT BE USED.
  5. CLAY DAMS SHALL BE REQUIRED WHEN AND WHERE NECESSARY PER THE SOLE DISCRETION OF THE LAKE COUNTY SANITARY ENGINEER.

LAKE COUNTY DEPARTMENT OF UTILITIES  
TRENCH & BEDDING DETAILS  
(MODIFIED)

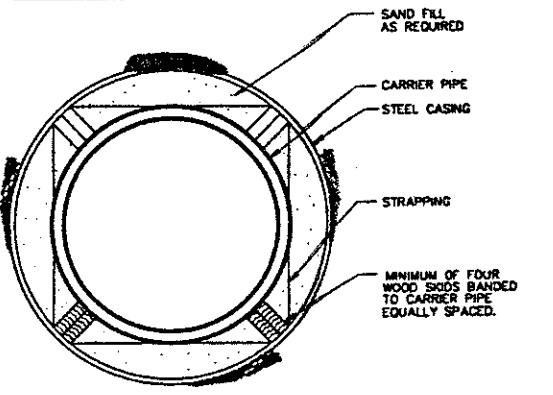


CASING PIPE CLOSURE DETAIL

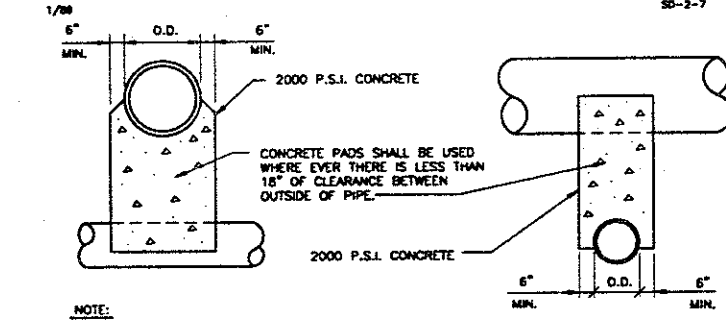


PIPE SKID DETAIL  
BORING DETAIL

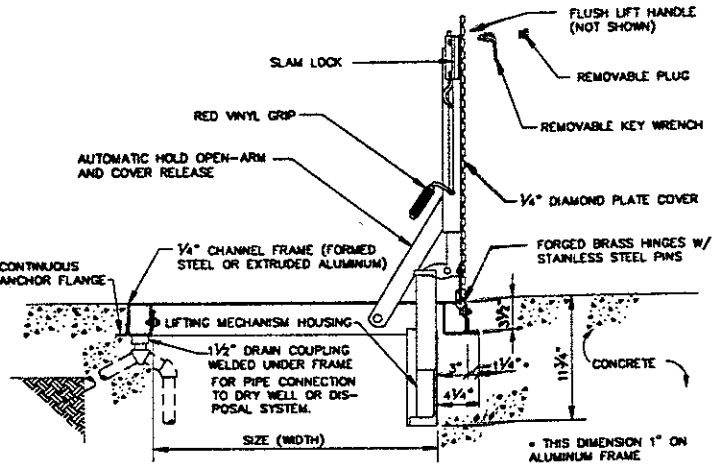
CARRIER PIPE		STEEL CASING PIPE	
DIA.	THICK.	MATERIAL TYPE OF GRADE	OF DIA.
16"	30"	A-36	BAND



SECTION "A-A"  
BORING DETAIL

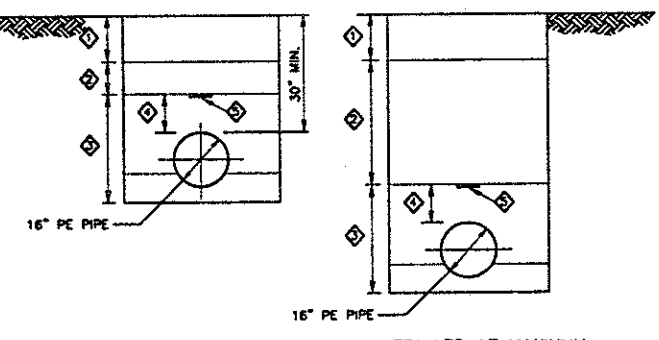


PIPE CROSSING DETAIL

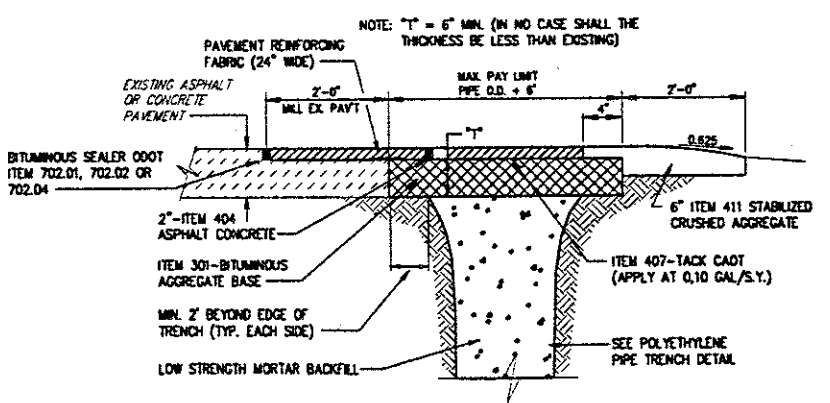


TYPE "J" ACCESS DOOR  
(SINGLE LEAF ALUMINUM)  
(N.T.S.)

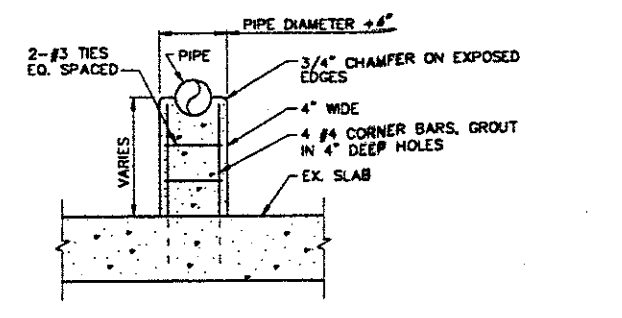
- ◆ PAVEMENT REPLACEMENT (PER PLAN) OR SELECT ON-SITE GRANULAR BACKFILL OUTSIDE OF PAVEMENT.
- ◆ LOW STRENGTH MORTAR BACKFILL UNDER PAVEMENT AND BERMS OR SELECT ON-SITE GRANULAR BACKFILL OUTSIDE OF PAVEMENT.
- ◆ MANUFACTURED, CLEAN, ANGULAR, GRANULAR CRUSHED STONE OR ROCK (1/4" TO 3/4") OR CRUSHER-RUN GRAVEL, CLEAN WELL ROUNDED GRAVELS OR GRAVEL-SAND MIXTURES (1/4" TO 3/4").
- ◆ 6" MIN. - 12" MAX.
- ◆ MAGNETIC DETECTOR TAPE, INSTALL 6" TO 12" ABOVE THE CENTER OF NON-METAL PIPES.



TYPICAL INSTALLATION  
POLYETHYLENE PIPE (PE) TRENCH DETAILS



TYPE C PAVEMENT REPLACEMENT



CONCRETE PIPE SUPPORT DETAIL

REV. NO.	DESCRIPTION	DATE	BY	CHK'D.

LAKE COUNTY UTILITIES DEPARTMENT  
CONCORD FORCE MAINS  
CONTRACT C - FORCE MAINS  
CONCORD TOWNSHIP, OHIO

DATE: OCT. 1998  
DRAWN BY: E.L.E.  
CHECKED BY: J.W.S.  
APPROVED BY: \_\_\_\_\_  
P.L. No. \_\_\_\_\_

CONTRACT C - FORCE MAINS  
STANDARD DETAILS

SCALE	
HOR.	VERT.
AS NOTED	
CONTRACT NO. 9730301	
SHEET NO. 39	OF 40