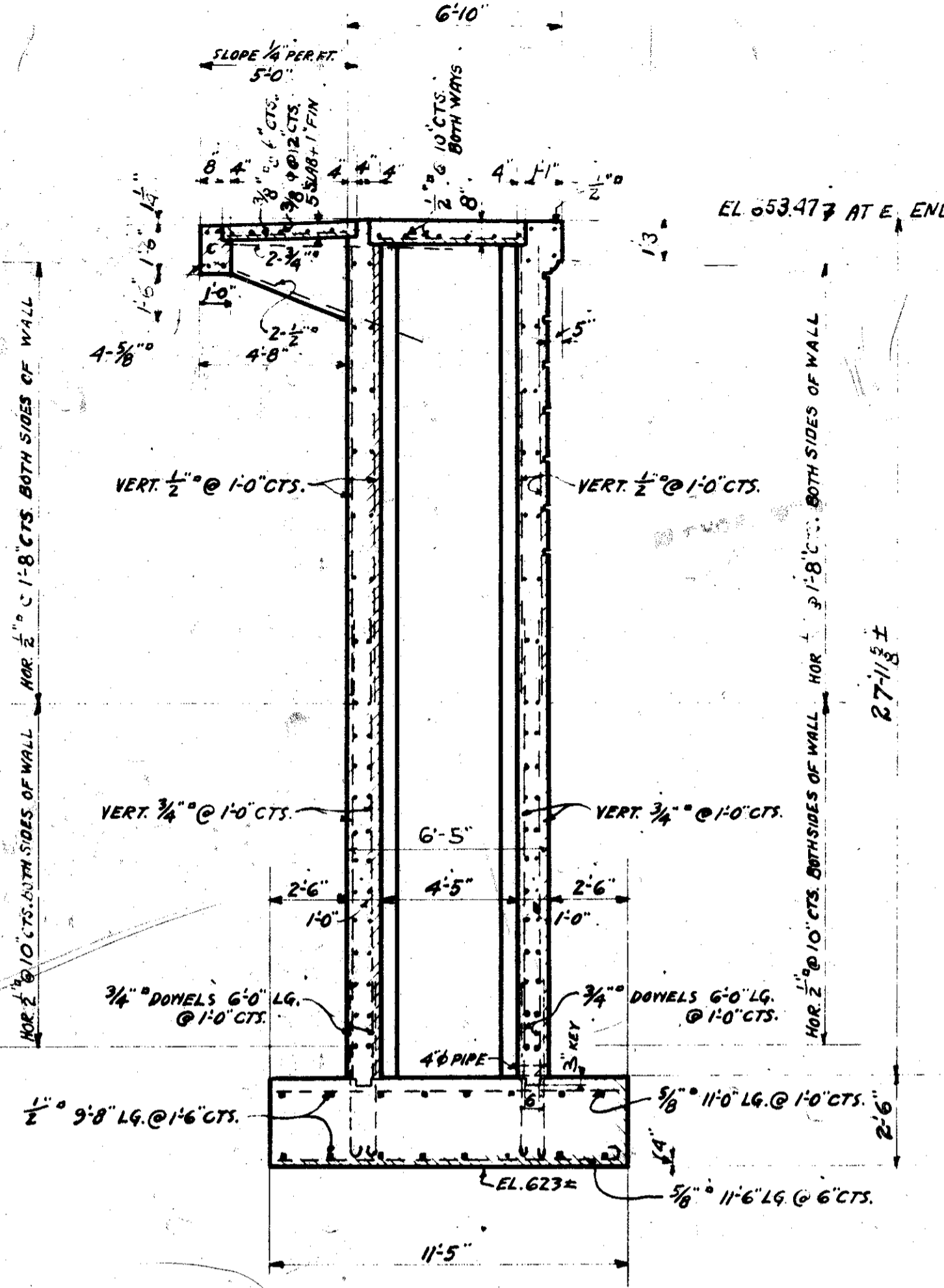
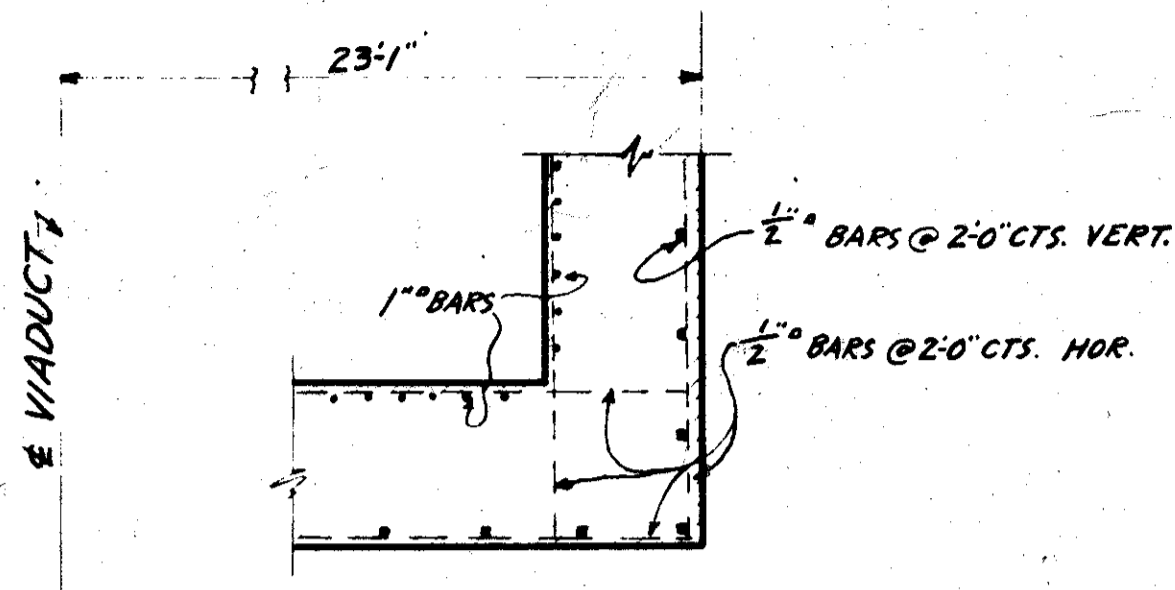


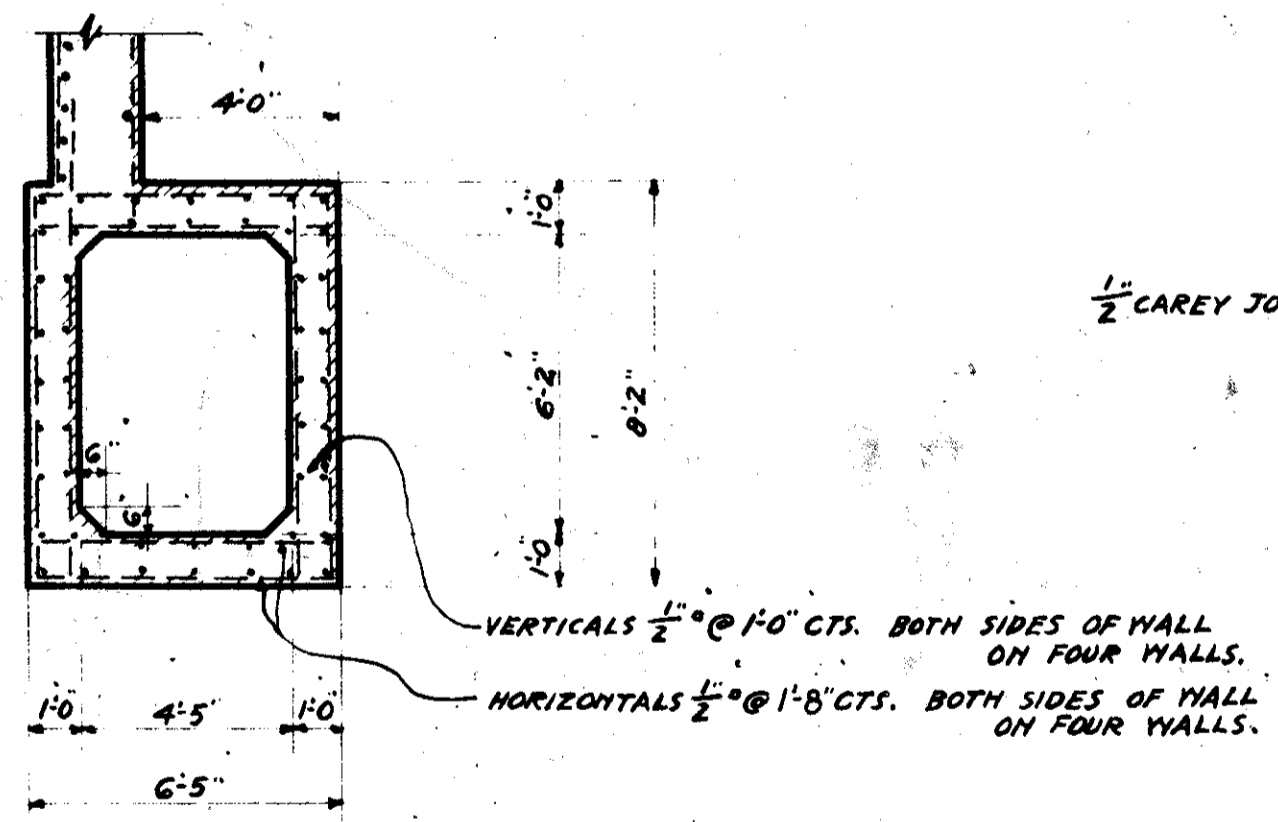
SECTION B-B



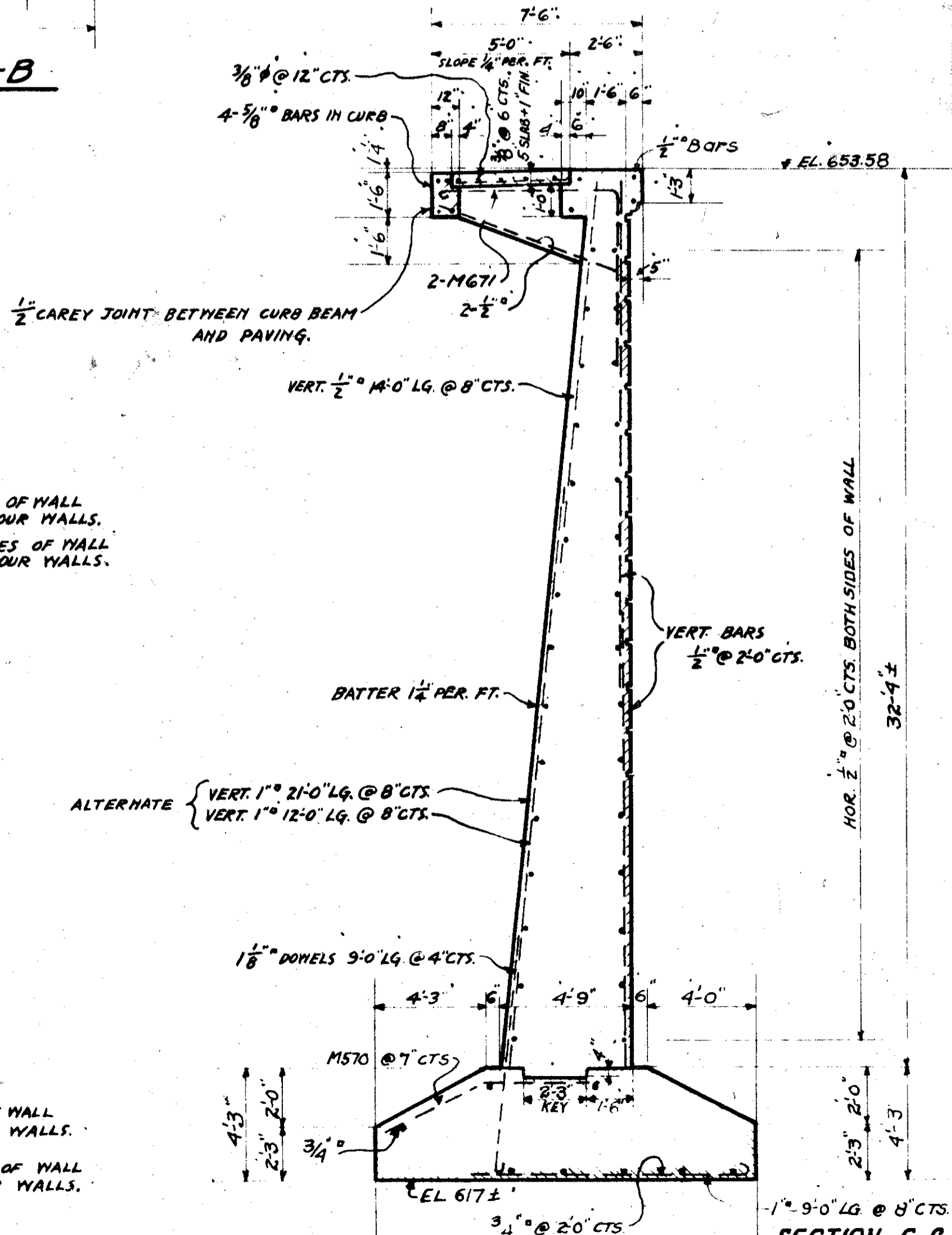
SECTION D-D



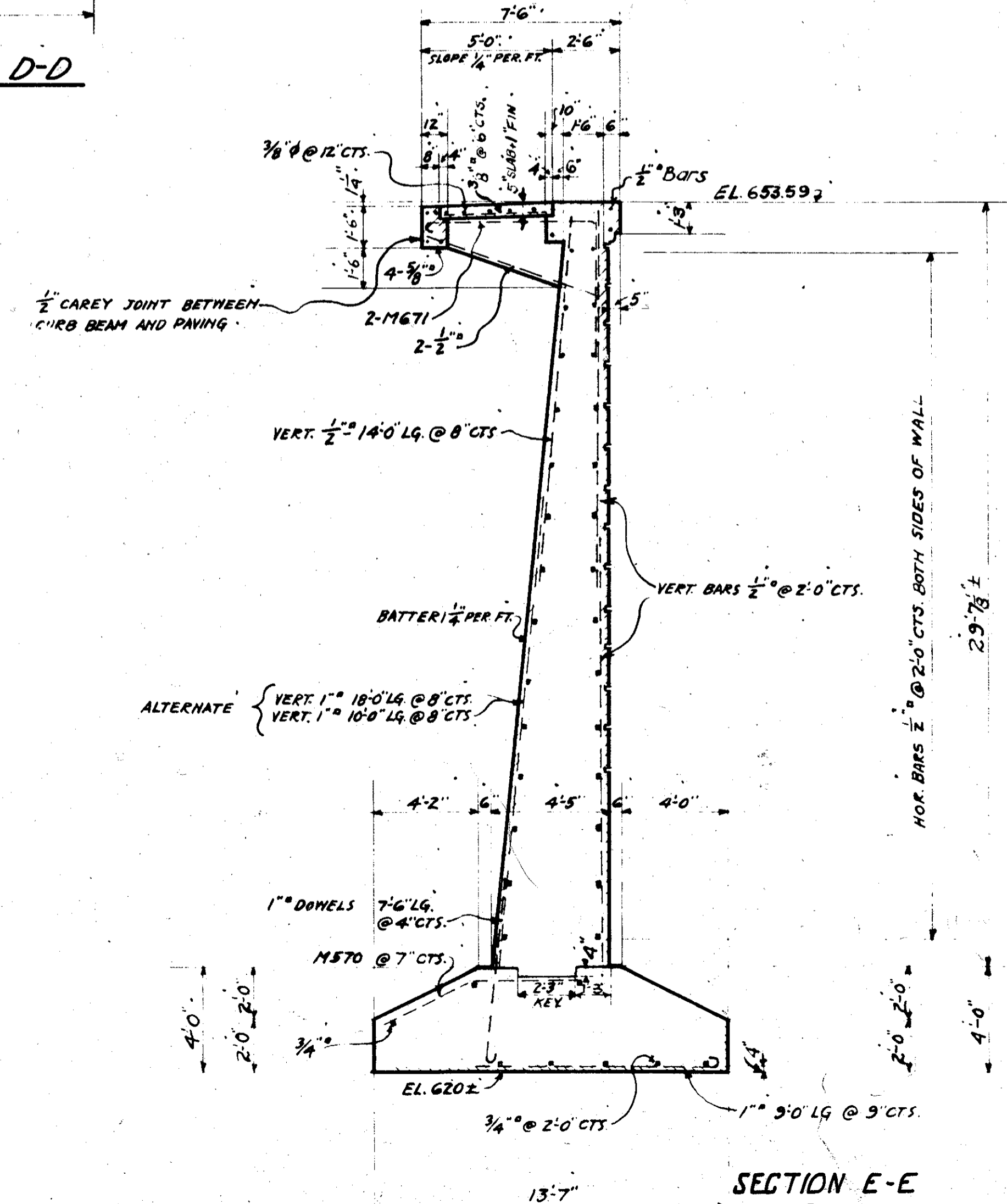
SECTION H-H  
HORIZONTAL SECTION THRU FRONT CORNER OF ABUTMENT



SECTION F-F



SECTION G-G



SECTION E-E  
Rev. 7-21-77

APPROVED *July 21* 1919  
*J. C. Phillips*  
*F. P. Freshley*  
*H. E. Thompson* } COUNTY COMMISSIONER  
 \_\_\_\_\_ } COUNTY AUDITOR  
*W. L. Harris* } COUNTY ENGINEER  
 \_\_\_\_\_ } STATE HIGHWAY COMMISSIONER

NOTE  
 FOR LOCATION OF SECTIONS  
 SEE SHEET NO. 10.

THE WATSON ENGINEERING COMPANY,  
 CLEVELAND, OHIO.

**CHAGRIN RIVER VIADUCT,**  
 WILLOUGHBY,  
 LAKE COUNTY, OHIO

C. C. HARRIS COUNTY ENGINEER.

**DETAILS OF EAST ABUTMENT.**

DRAWING MADE	DRAWN BY	TRACED BY	CHECKED BY	DATE	APPROVED BY	DATE
JULY 20, 1919	E.M.	E.M.	FLG.	7-9-19	F.L.G.	9/10/19
REV. BY	DATE	REMARKS	SCALE			
			1/4"=1'-0"			