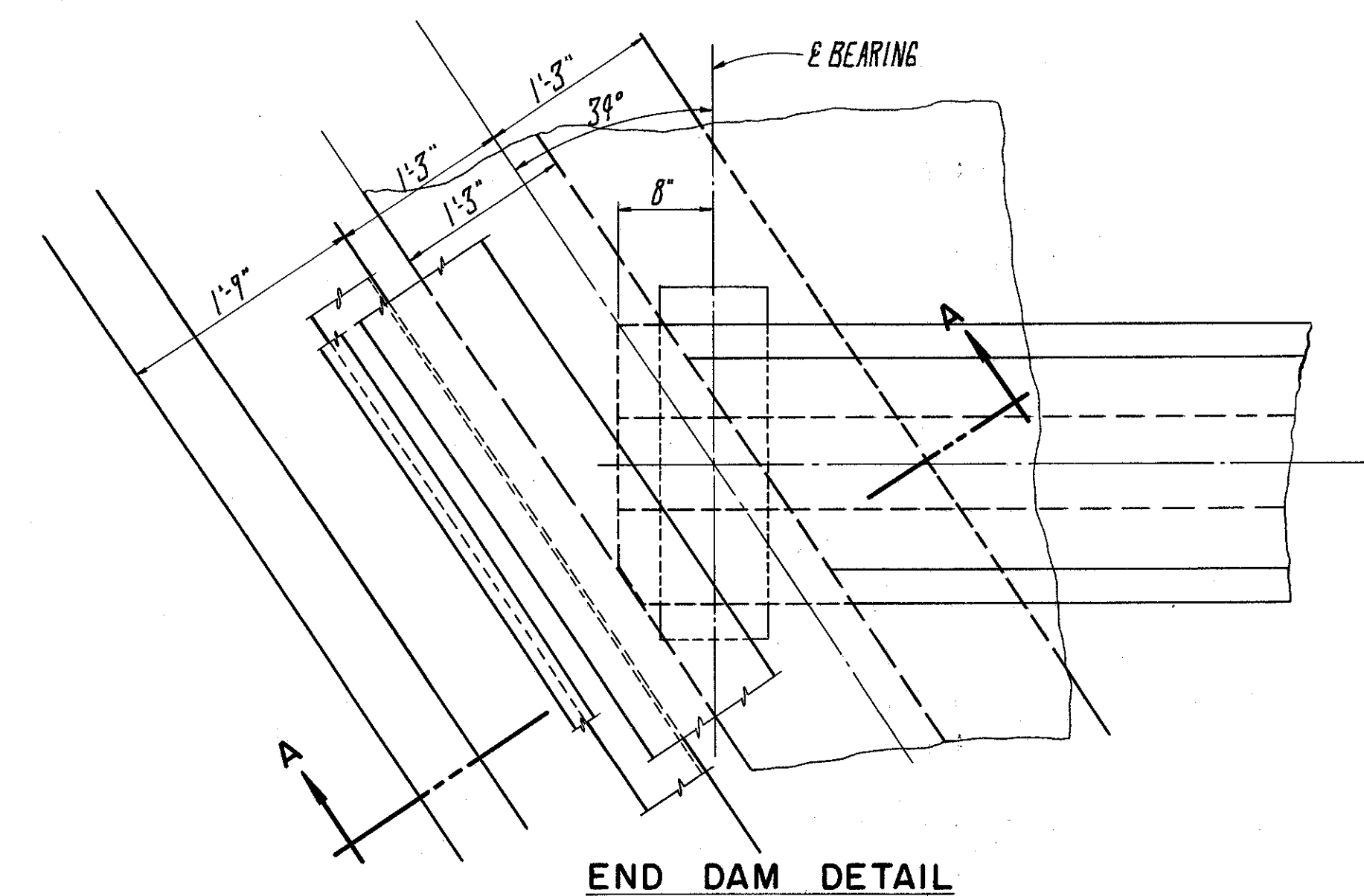
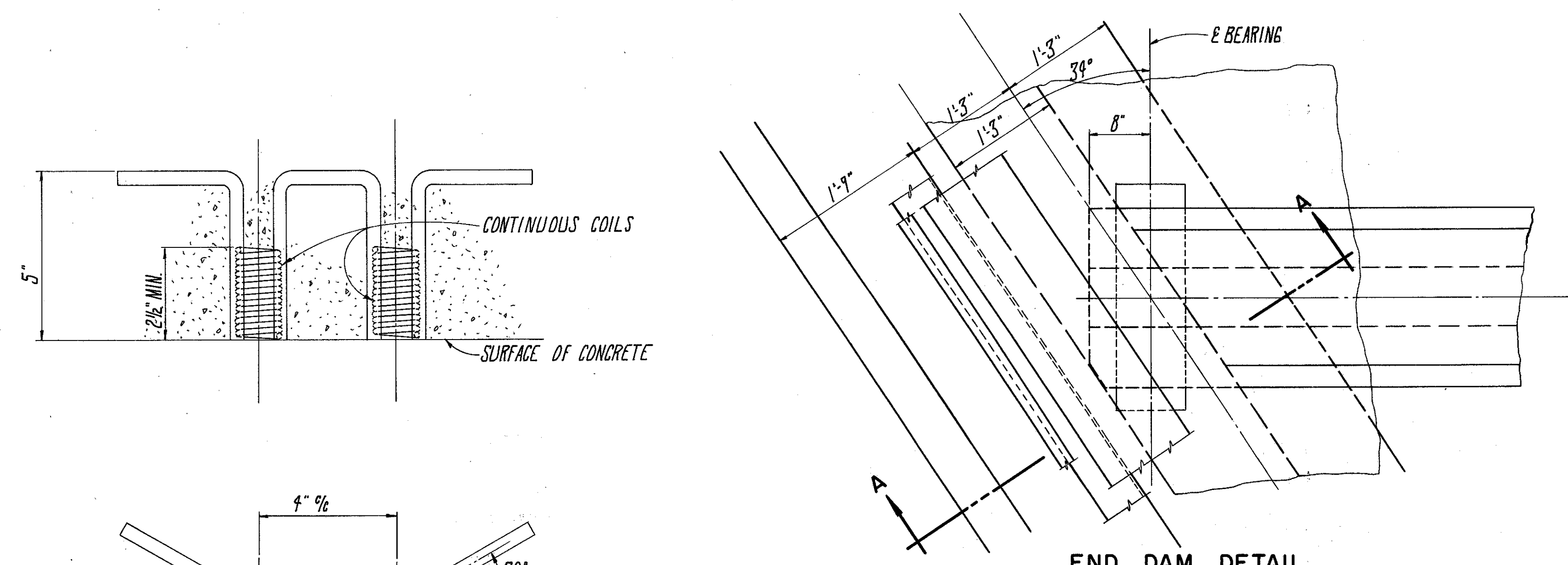


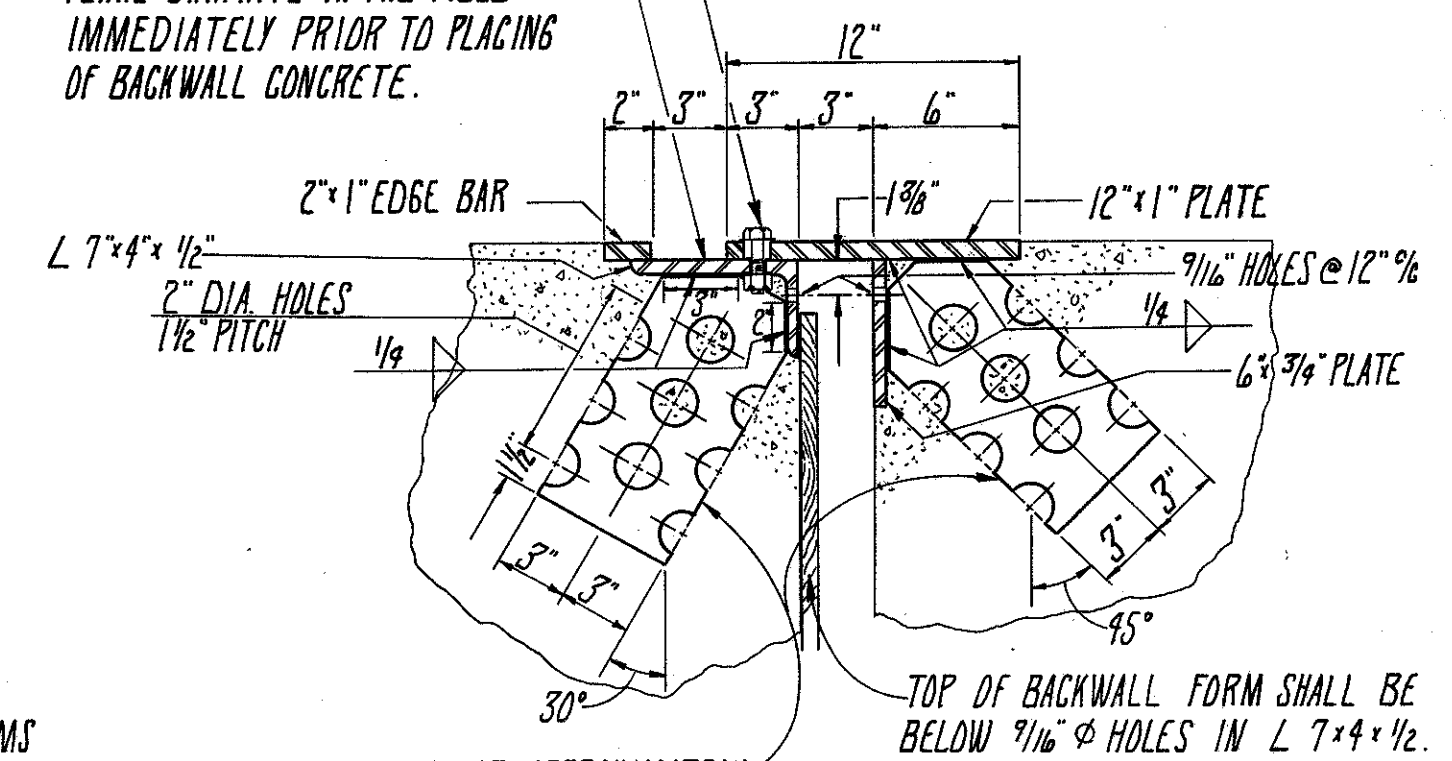
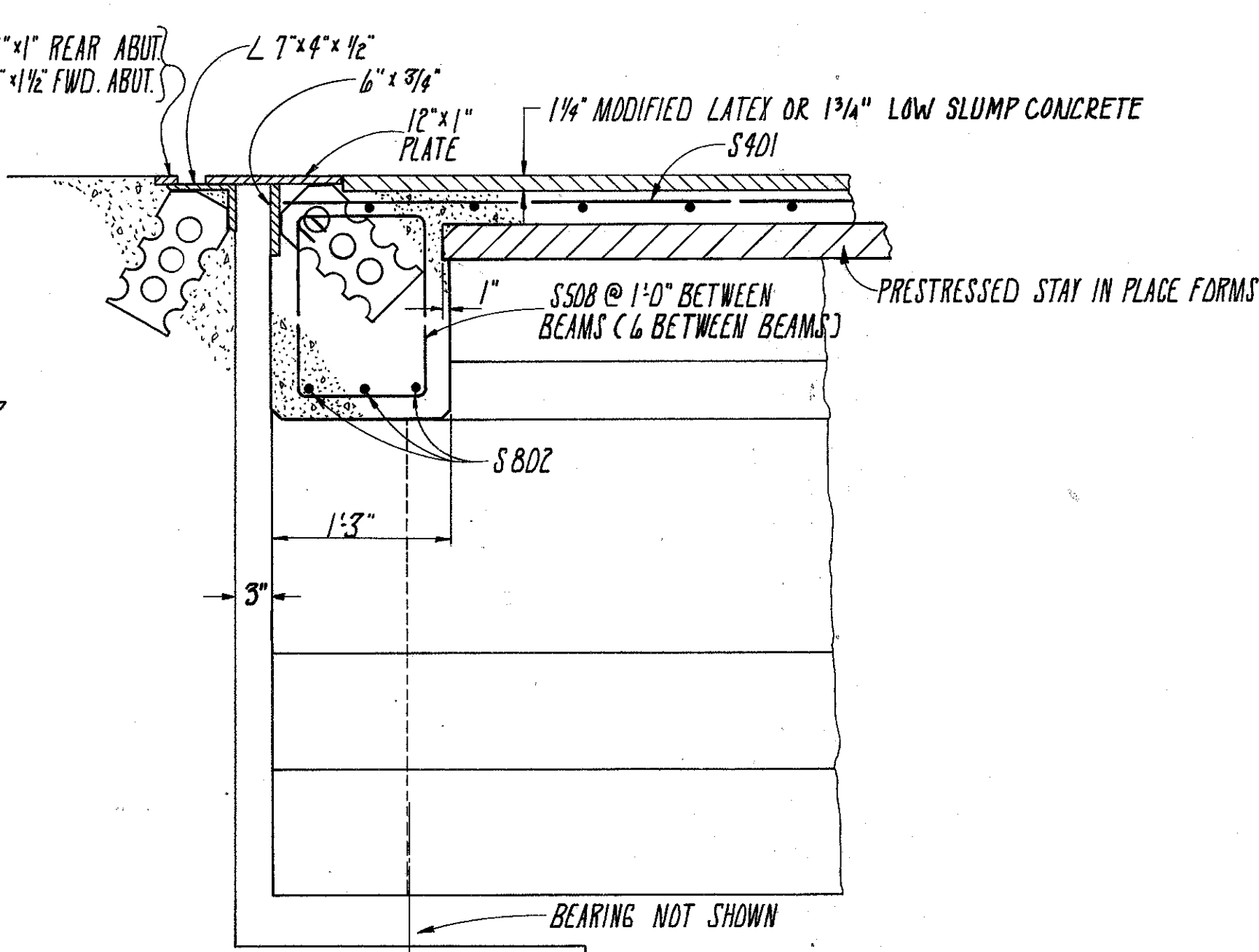
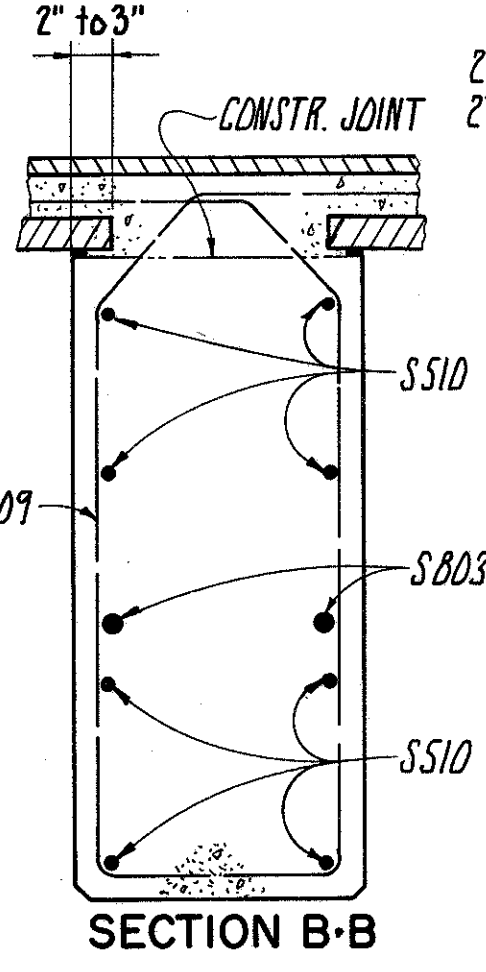
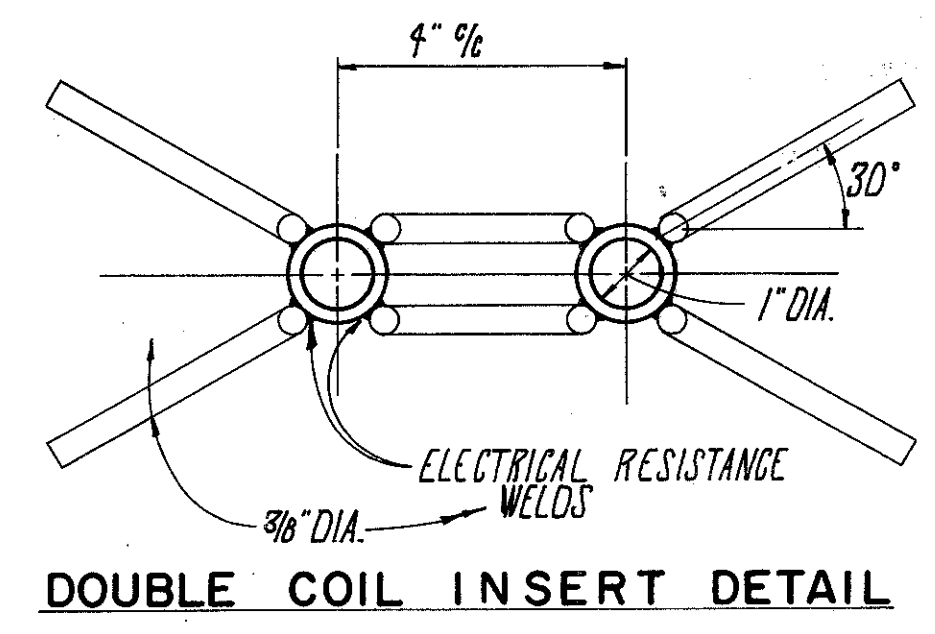
REPRODUCED FROM  
MICROFILMED  
JAN 6 1983



A WELDED BUTT JOINT IN THE END DAM, AT THE APEX OF THE ROADWAY, WILL BE REQUIRED FOR THAT PORTION OF THE END DAM ATTACHED TO THE SUPERSTRUCTURE, THE PORTION ATTACHED TO THE BACK WALL SHALL BE PLACED IN SEGMENTS NOT LESS THAN 6'-0" IN LENGTH, WITH A JOINT, AT EACH JOINT IN THE BACK WALL AND ONE AT THE APEX OF THE ROADWAY. THESE SHALL BE CLOSELY BUTTED BUT SHALL NOT BE WELDED.

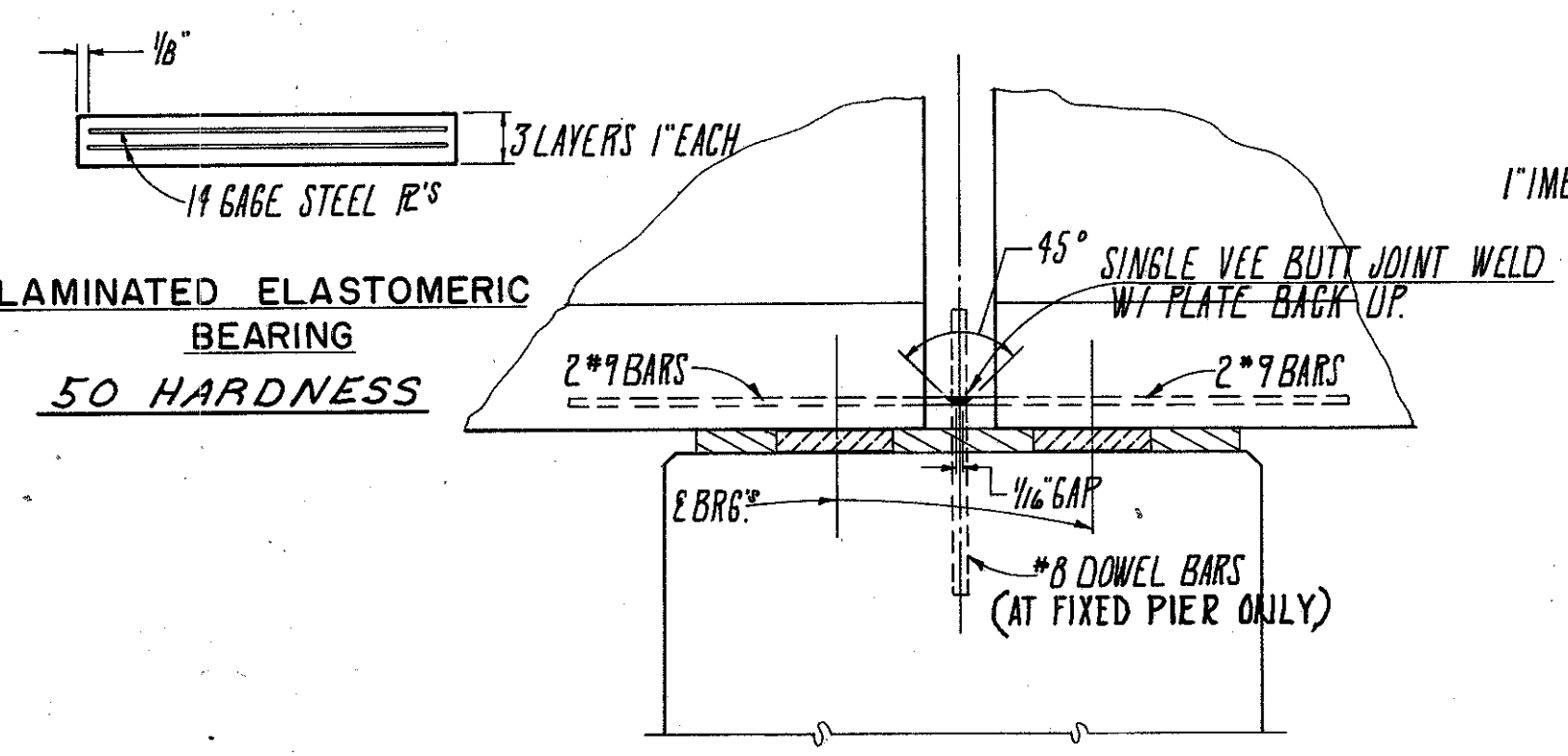
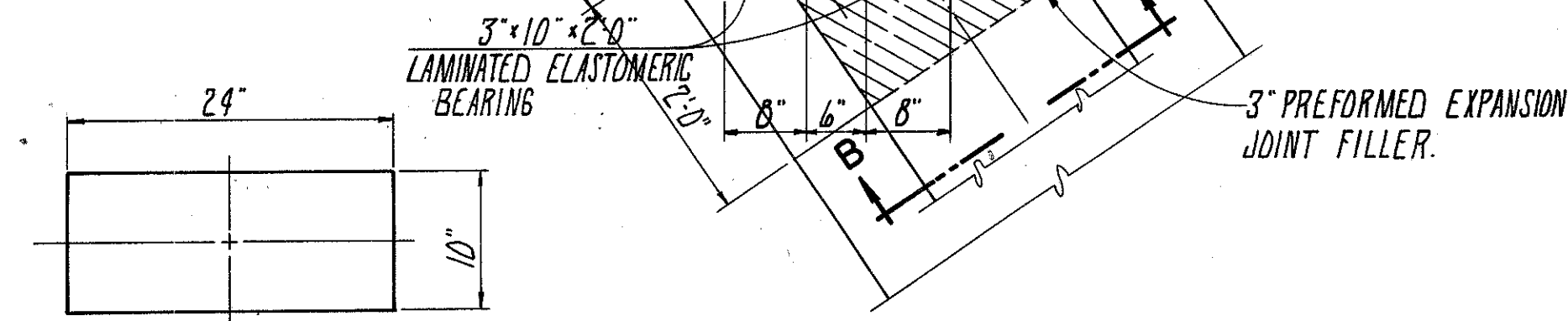
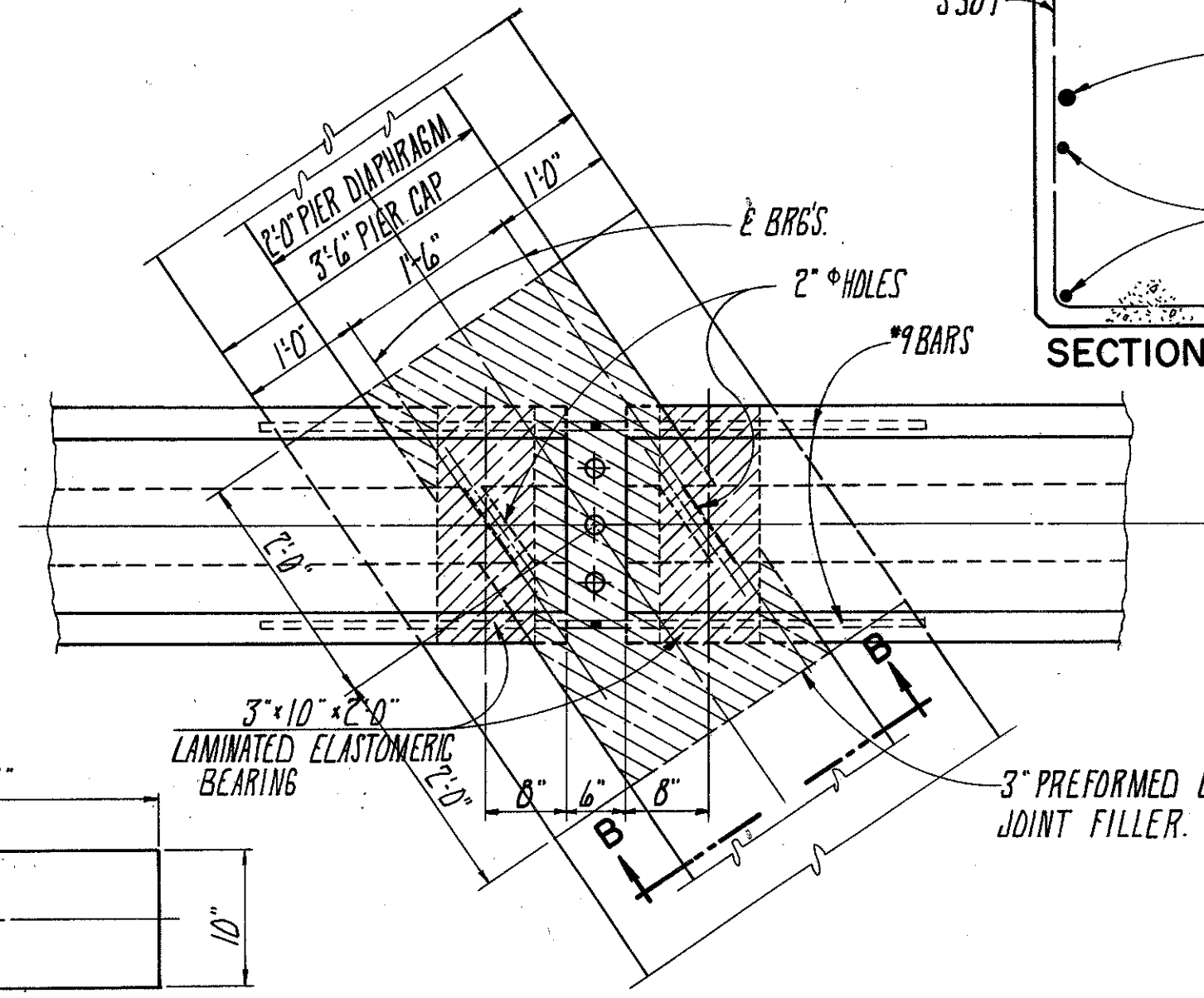
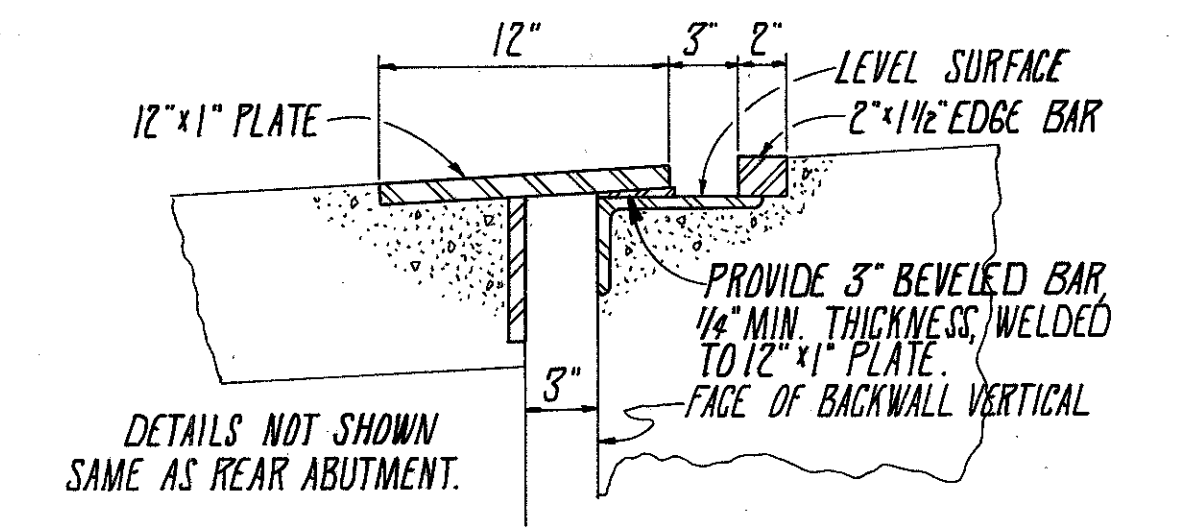
5/8" x 2" BOLTS AT NOT MORE THAN 2'-0" WITH NUTS TACK-WELDED TO UNDERSIDE OF LOWER ANGLE. 1 1/8" HOLES IN THE UPPER PLATE. CENTER 5/8" BOLTS IN 1 1/8" HOLES. APPLY FLAKE GRAPHITE BETWEEN WASHERS AND PLATE. TURN BOLTS TIGHT AND RELEASE ONE-HALF TURN. REMOVE BOLTS AS SOON AS CONCRETE HAS SET, PREFERABLY WITHIN 2 HOURS AFTER PLACING TO AVOID DAMAGE DUE TO TEMPERATURE EXPANSION OR CONTRACTION OF THE SUPERSTRUCTURE. FILL HOLES WITH BITUMINOUS MATERIAL.

THIS CONTACT SURFACE SHALL NOT BE PAINTED BUT SHALL BE CLEANED AND LUBRICATED WITH FLAKE GRAPHITE IN THE FIELD IMMEDIATELY PRIOR TO PLACING OF BACKWALL CONCRETE.

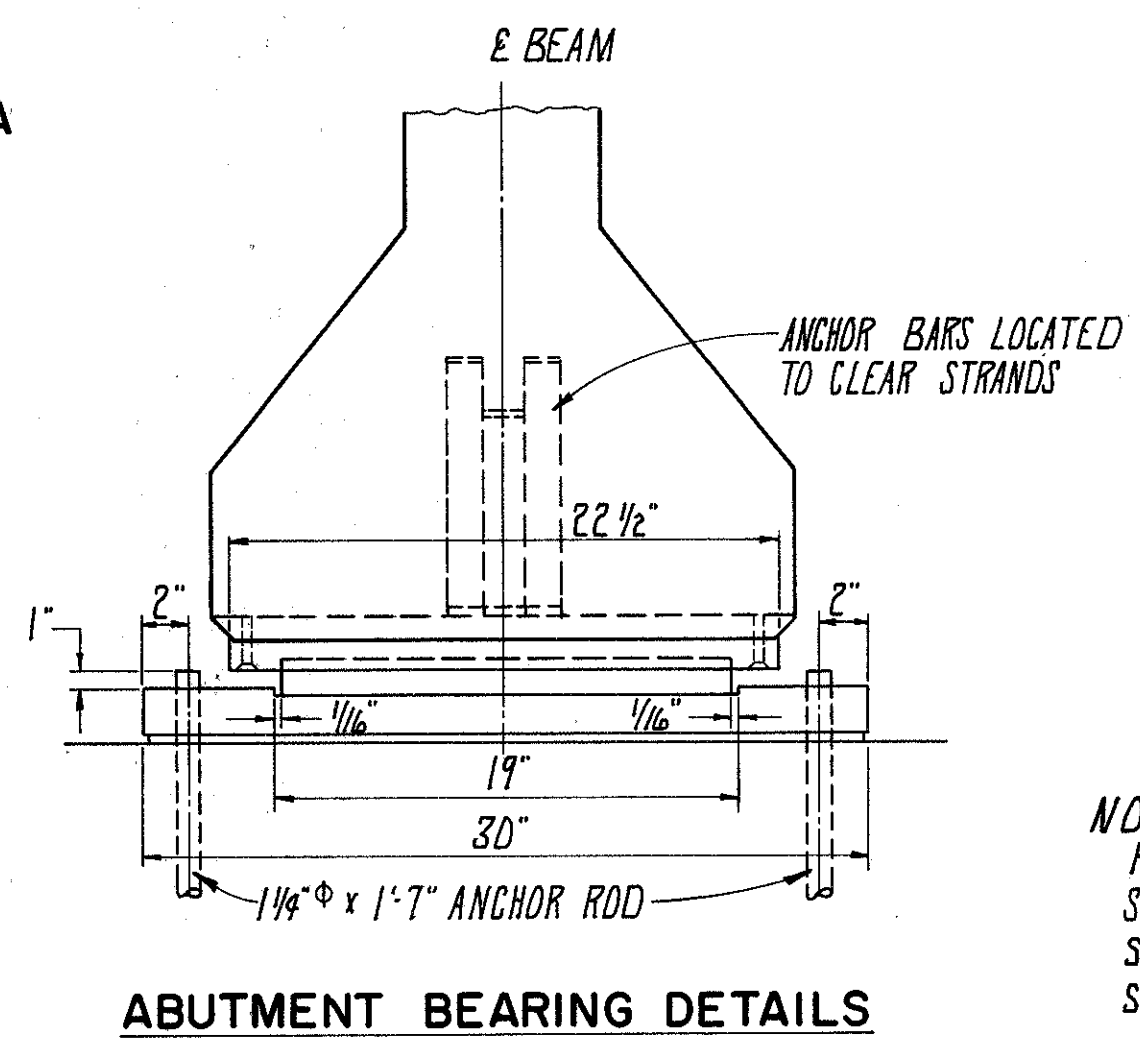
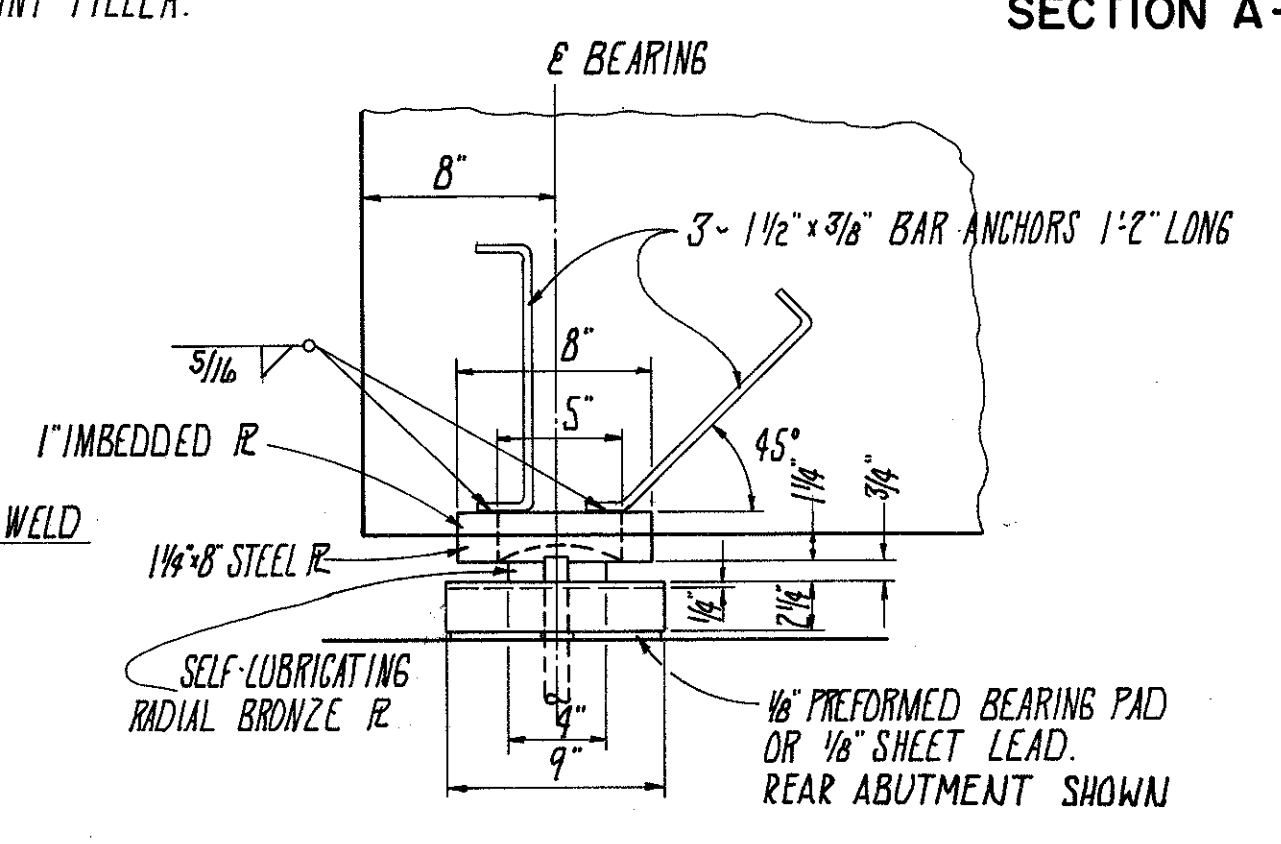


6" x 1/2" x 12" PLATES SPACED AT APPROXIMATELY 15" x 6" EXCEPT NEAR JOINTS IN THE ANGLE, WHERE THE PLATES SHALL BE PLACED WITHIN 6" OF EACH SIDE OF THE JOINT. THE HOLES MAY BE BURNED IN THE PLATE.

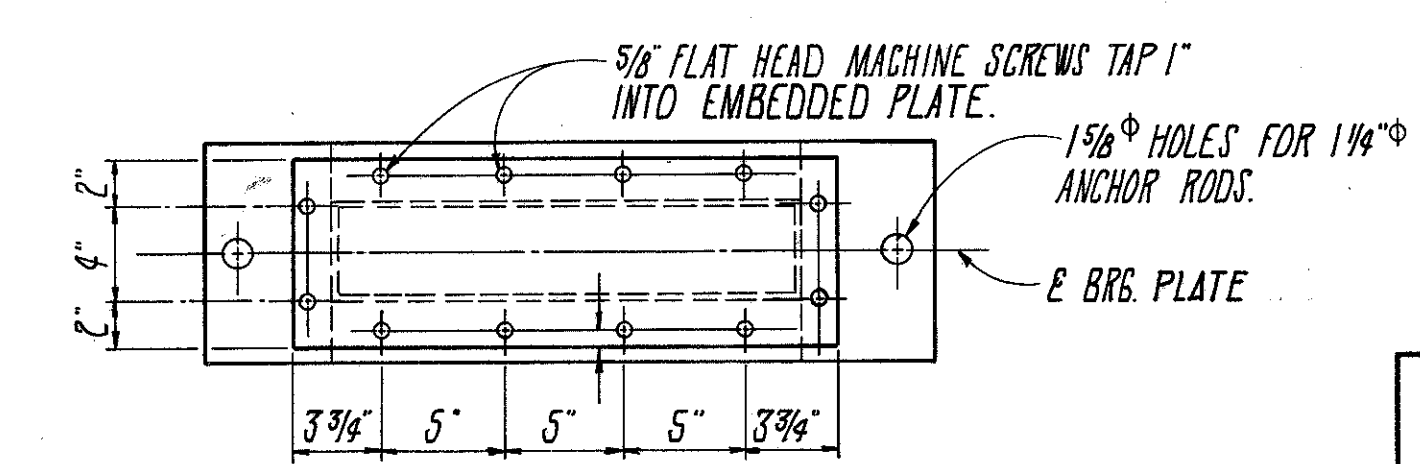
PORTION OF END DAMS IN CONTACT WITH STEEL OR WITH CONCRETE SHALL NOT BE PAINTED. ALL OTHER PORTIONS SHALL BE CLEANED AND PAINTED IN ACCORDANCE WITH ITEM 514.



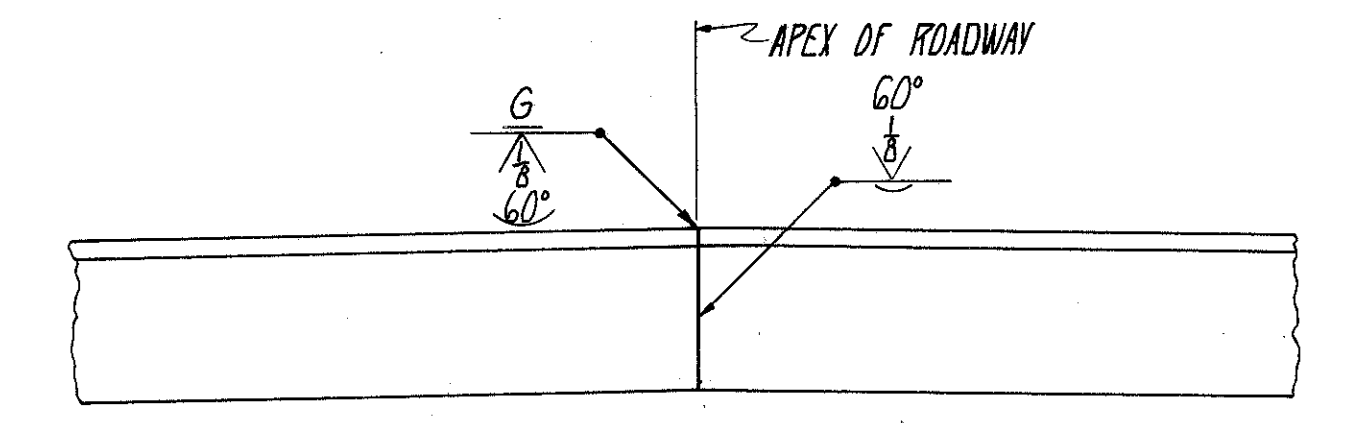
PIER BEARING DETAILS (FIXED PIER)



SELF LUBRICATING RADIAL BRONZE PLATE DETAIL



NOTE:  
FOR ADDITIONAL DETAILS, NOTES, AND SPECIFICATION, SEE STANDARD DRAWING F'S B-1-62. SEE SUPPLEMENTAL SPECIFICATION 927, SELF LUBRICATING BRONZE BEARING PLATES.



WELDED BUTT JOINT in SUPERSTRUCTURE END DAM

FRANKLIN CONSULTANTS INC.		10 / 14	
Consulting Engineers		OHIO	
COLUMBUS,			
<b>SUPERSTRUCTURE DETAILS</b>			
CITY OF WILLOUGHBY CHAGRIN RIVER BRIDGE			
DESIGNED	DRAWN	TRACED	CHECKED
FA	B.B.	B.B.	HA
REVIEWED	DATE	REVISED	
J4	5/19/77		