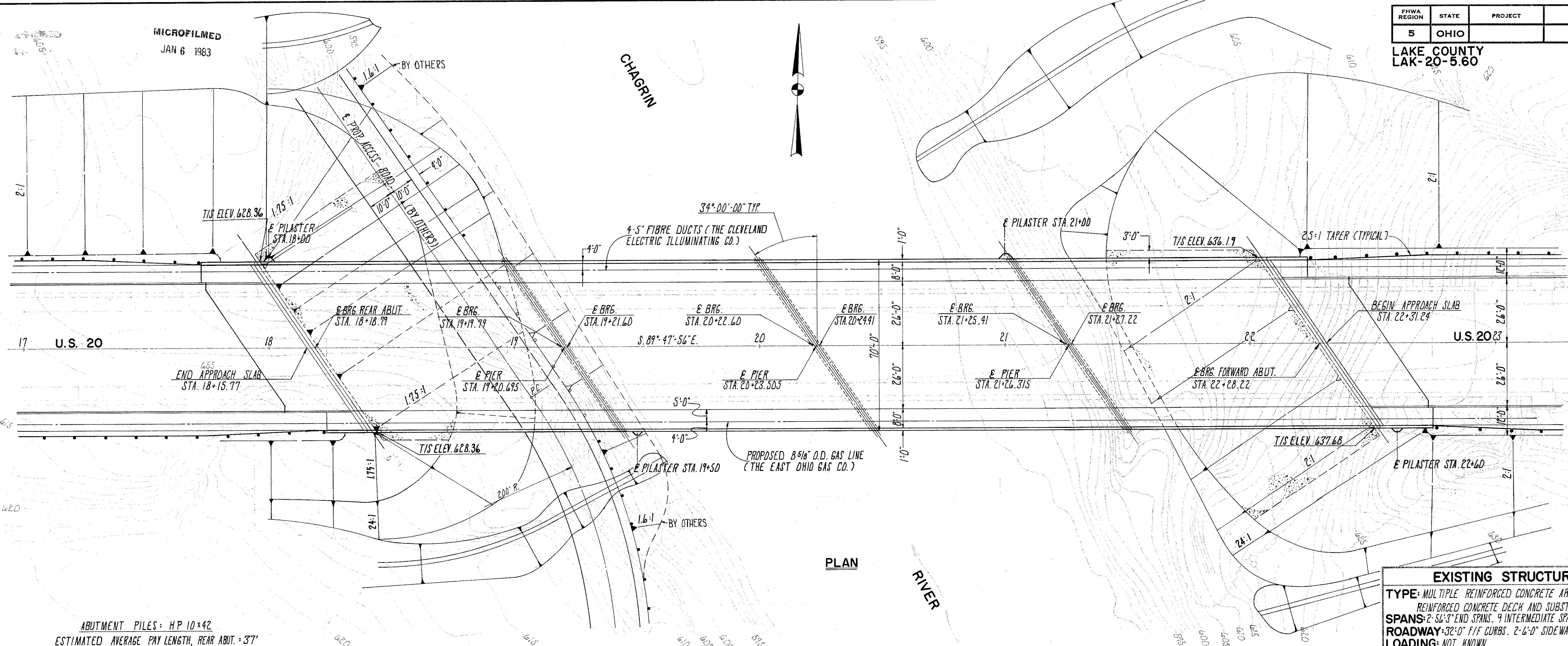


MICROFILMED
JAN 6 1983

FHWA REGION	STATE	PROJECT
5	OHIO	LAKE COUNTY LAK-20-5.60

62
85

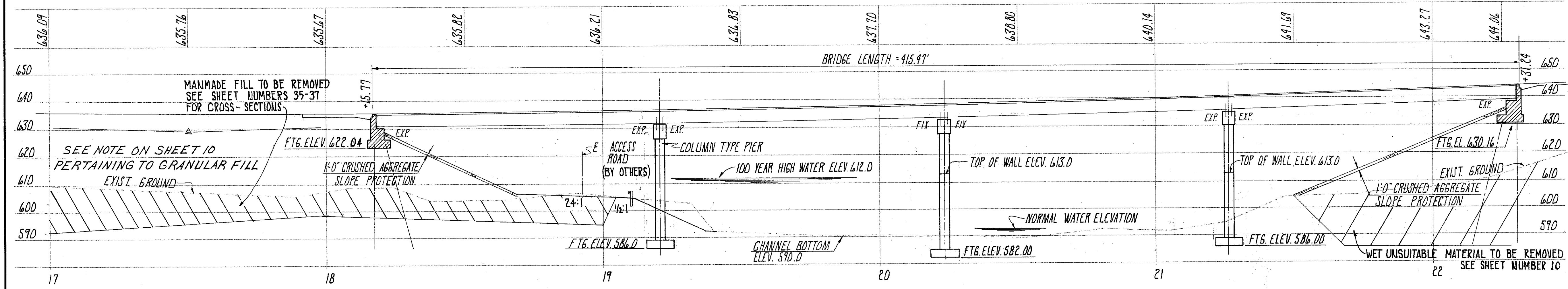


PLAN

ABUTMENT PILES: HP 10x42
ESTIMATED AVERAGE PILE LENGTH, REAR ABUT. = 37'
FWD. ABUT. 18' TO 40'

VERTICAL CURVE DATA:
G1 = -4.00% G2 = +3.16%
PVI STA. 17+50 ELEV. 629.05
L = 750'

EARTHWORK LIMITS SHOWN ARE APPROXIMATE. ACTUAL SLOPES SHALL CONFORM TO PLAN CROSS-SECTIONS.
DRAINAGE AREA = 246.4 SQ. MILES
Q100 = 32,000 c.f.s.
V100 = 9 f.p.s.



PROFILE ALONG U.S. 20

EXISTING STRUCTURE

TYPE: MULTIPLE REINFORCED CONCRETE ARCH WITH REINFORCED CONCRETE DECK AND SUBSTRUCTURES.
SPANS: 2-56'-3" END SPANS, 9 INTERMEDIATE SPANS OF 100'-0"
ROADWAY: 32'-0" F/F CURBS, 2'-6"-0" SIDEWALKS.
LOADING: NOT KNOWN.
WEARING SURFACE: ASPHALT.
SKEW: NONE
APPROACH SLAB: 25'-0"
ALIGNMENT: TANGENT
SUPERELEVATION: NONE

PROPOSED STRUCTURE

TYPE: PARTIALLY CONTINUOUS, PRESTRESSED CONCRETE T-BEAM WITH REINFORCED CONCRETE SUBSTRUCTURES.
SPANS: 101'-0", 101'-0", 101'-0", 101'-0"
ROADWAY: 52'-0" F/F CURBS, 8'-0" SIDEWALKS.
LOADING: HS 20-44 & ALTERNATE MILITARY LOADING.
WEARING SURFACE: 1 1/4" LATEX MODIFIED CONC. OR 1 3/4" DENSE CONC. OVERLAY
SKEW: 34° RIGHT FORWARD.
APPROACH SLAB: AS-1-72 (25'-0" LONG)
ALIGNMENT: TANGENT
SUPERELEVATION: NONE
A.D.T. = 22,270 (1995) A.D.T. T. = 670

FRANKLIN CONSULTANTS, INC. 1/19
COLUMBUS Consulting Engineers OHIO

SITE PLAN
CITY OF WILLOUGHBY
CHAGRIN RIVER BRIDGE

LAKE COUNTY Scale: 1" = 20' US 20

DESIGNED	DRAWN	TRACED	CHECKED	REVIEWED	DATE	REVISED
FA	BB	BB	MM	J.A.	1/11/76	