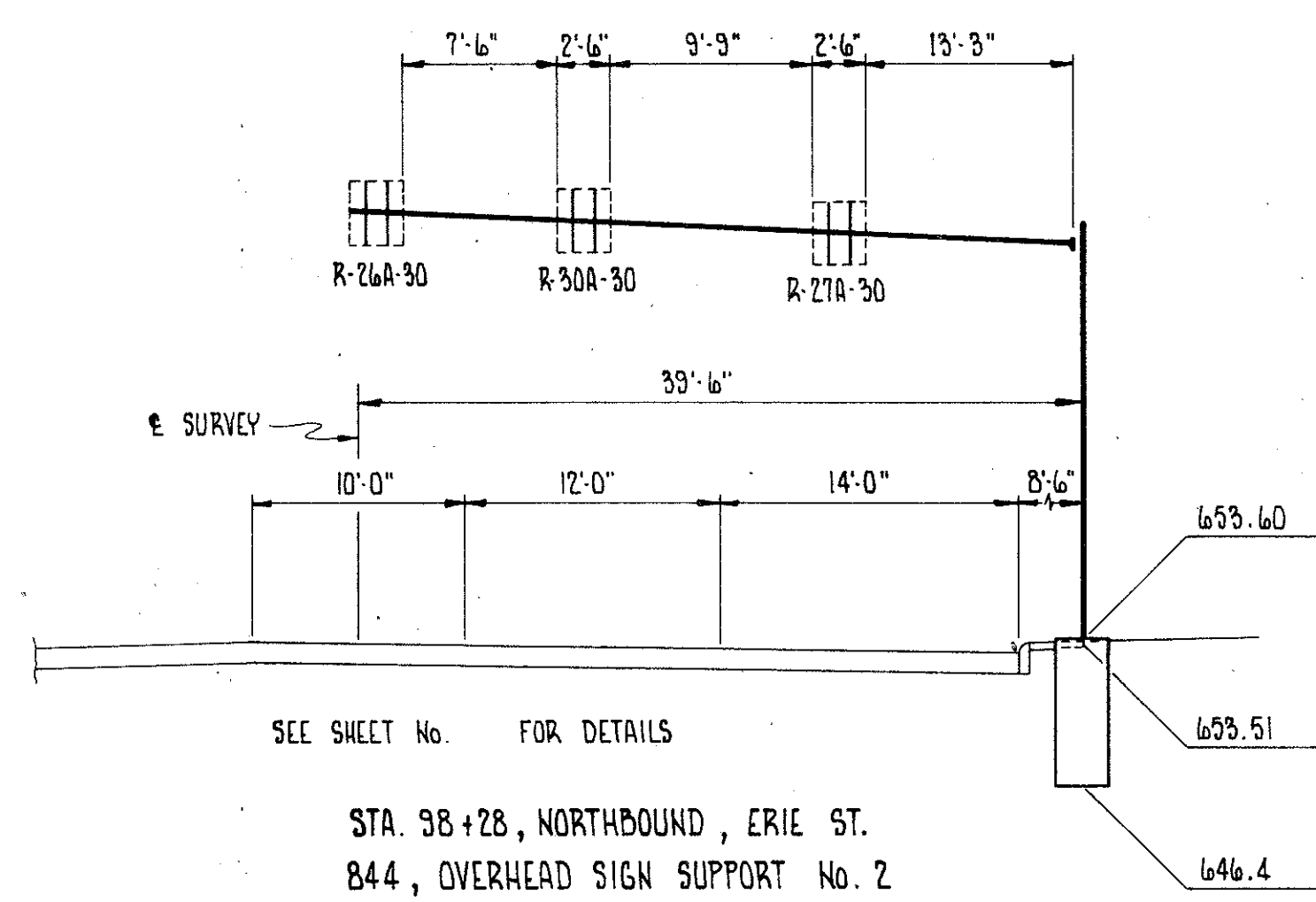


FHWA REGION	STATE	PROJECT
5	OHIO	

52
85

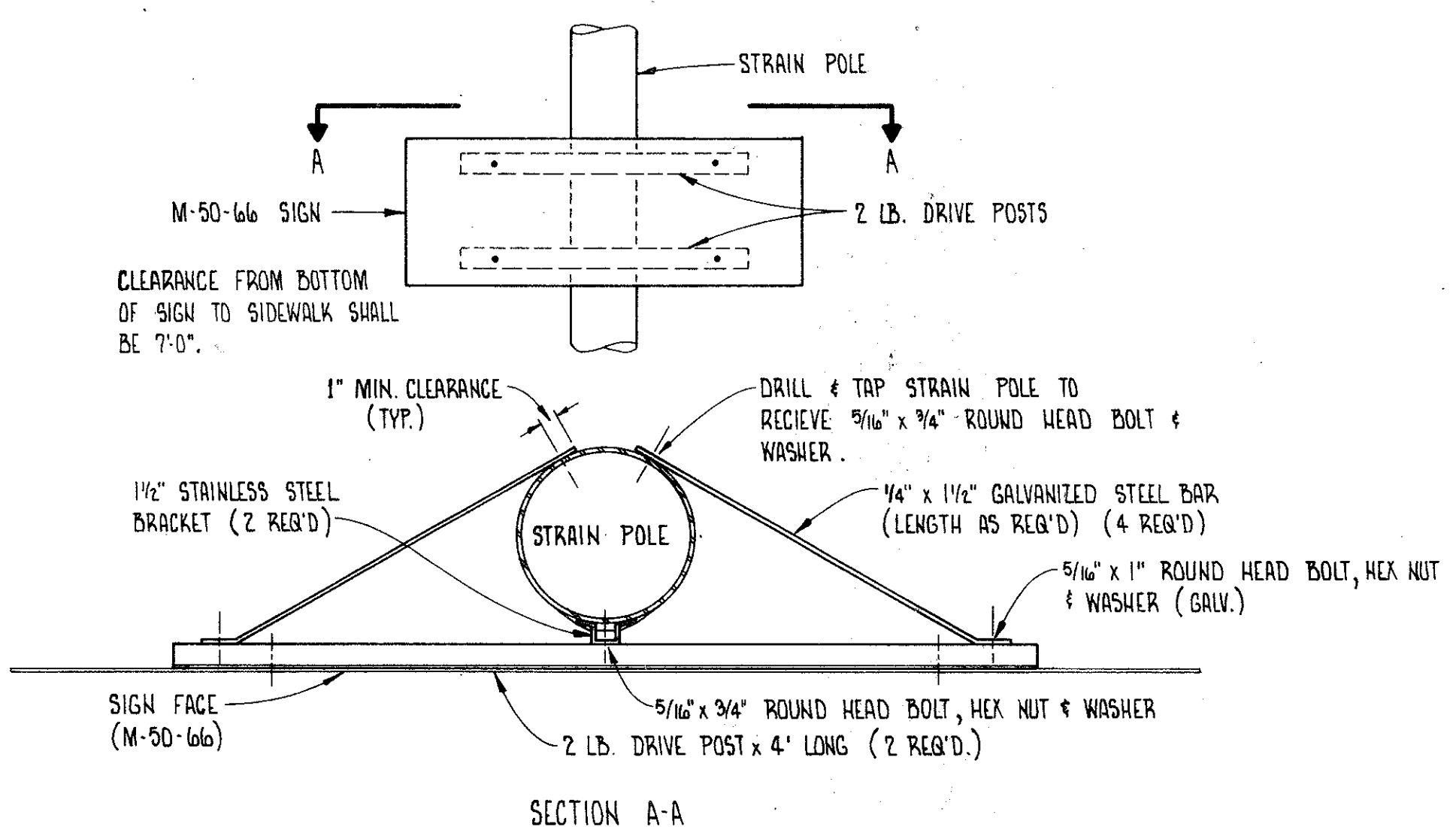
LAKE COUNTY
LAK-20-5.60

8
11

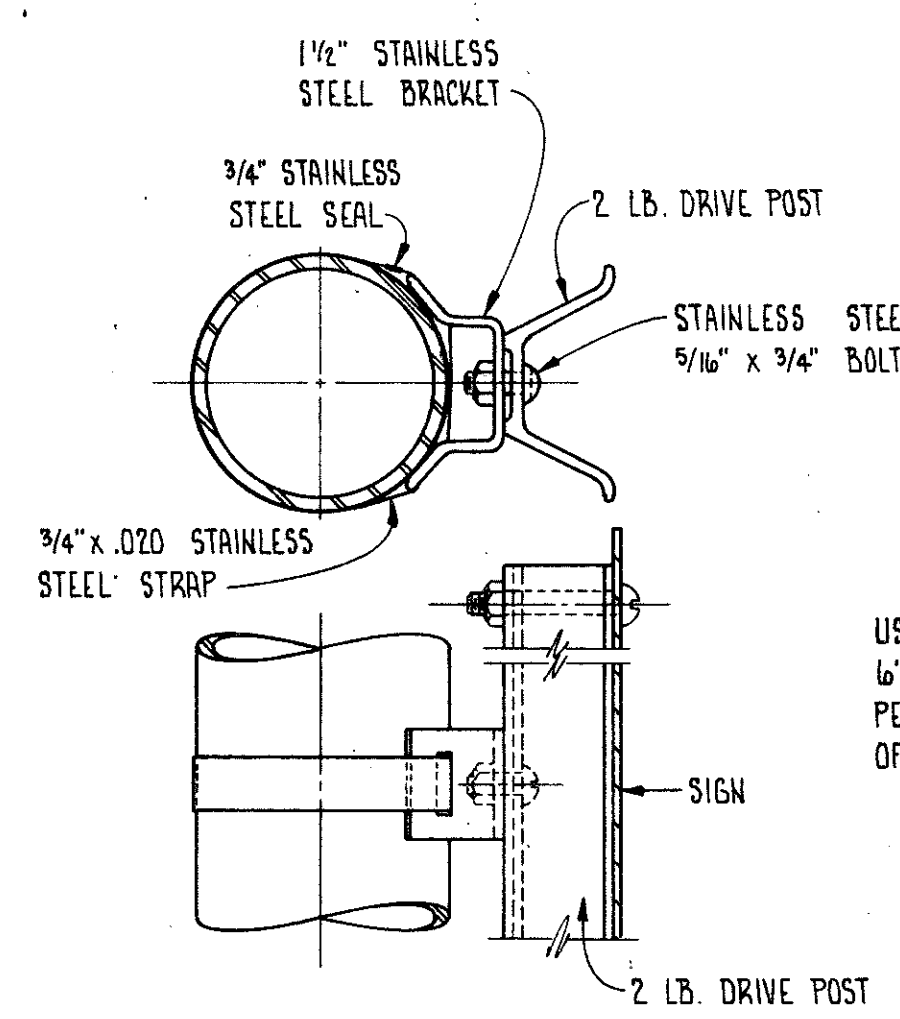


SEE SHEET No. FOR DETAILS

STA. 98+28, NORTHBOUND, ERIE ST.
844, OVERHEAD SIGN SUPPORT No. 2
TYPE 16.10, DES. 1
Ø GA, 12" x 9.27" x 19'-6" POLE
2-7 GA. 3.0" x 3.68 x 38'-0" ARM

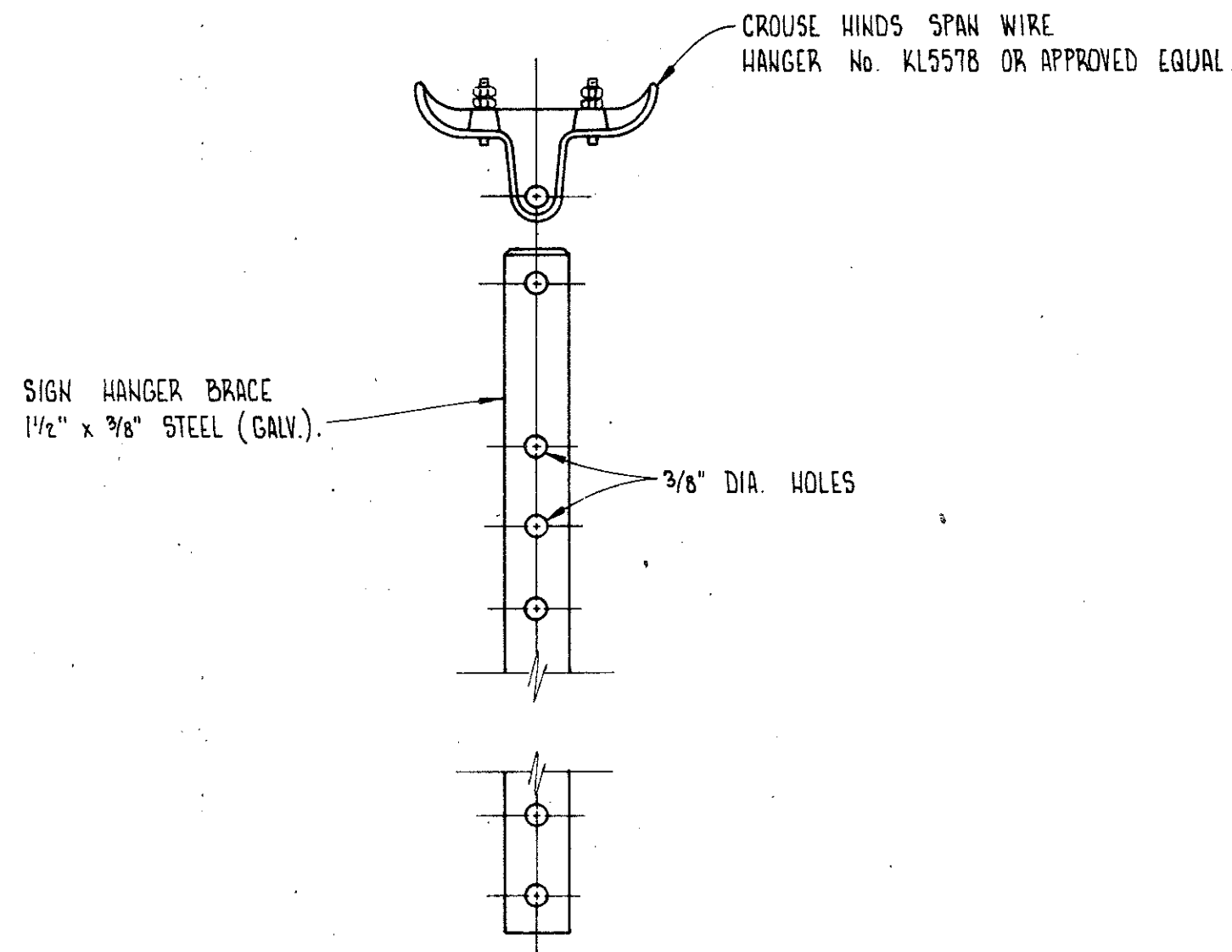


POLE MOUNTED SIGN ATTACHMENT, AS PER PLAN

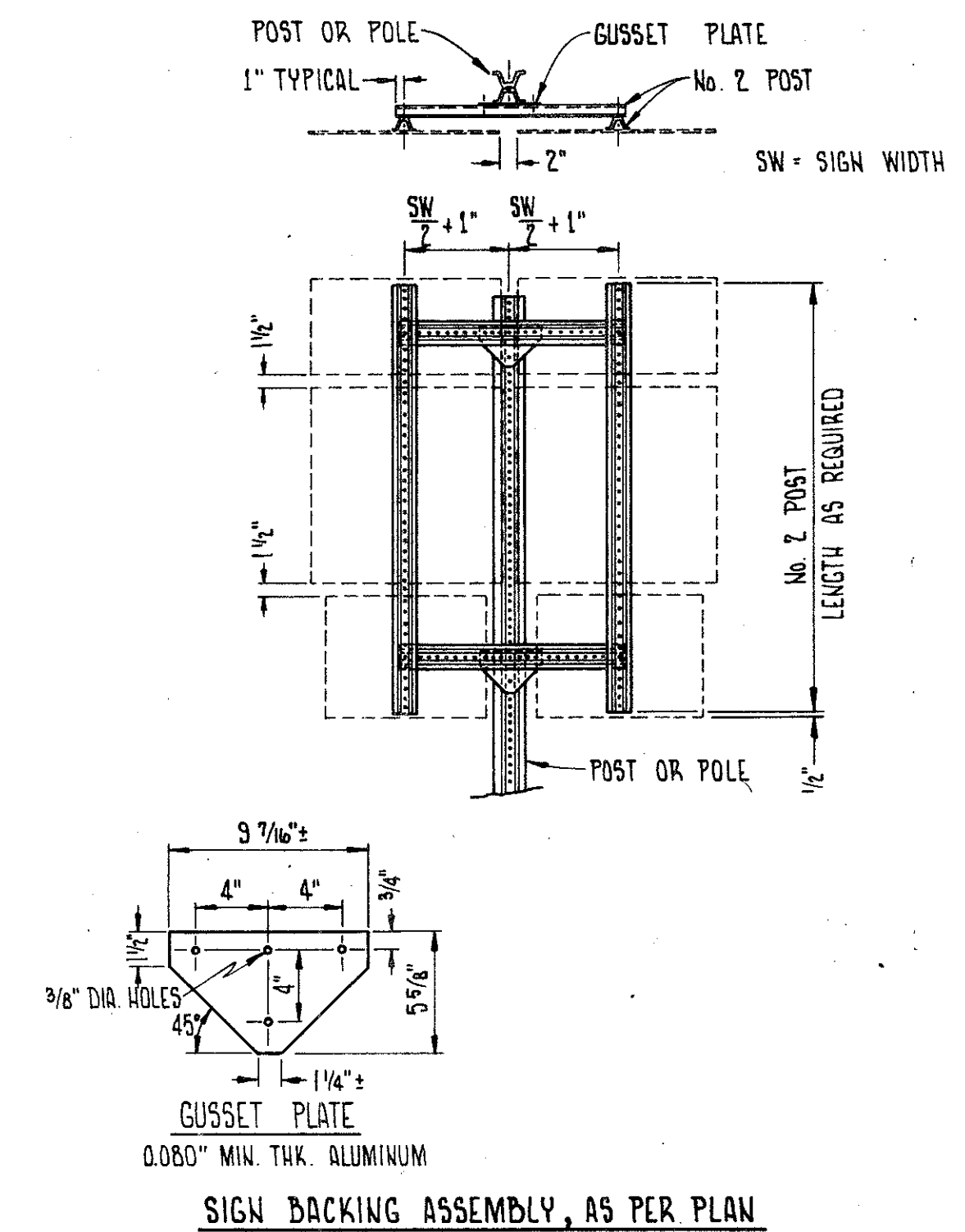
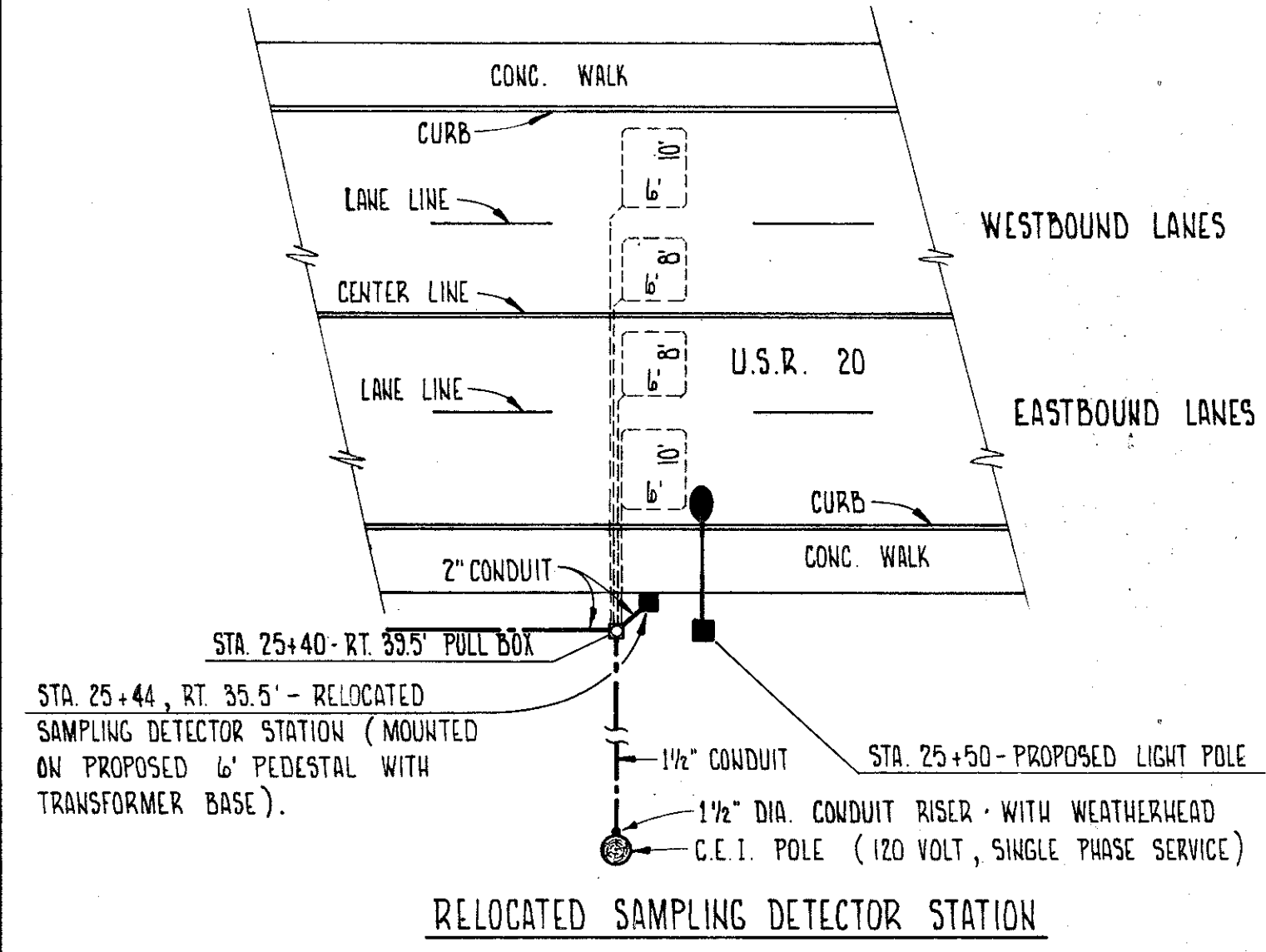


POLE MOUNTED SIGN ATTACHMENT

USE MINIMUM OF 2 BRACKETS (LOCATED 6" FROM TOP AND BOTTOM OF SIGN ASSEMBLY) PER INSTALLATION WITH A MAXIMUM SPACING OF 3'-0".



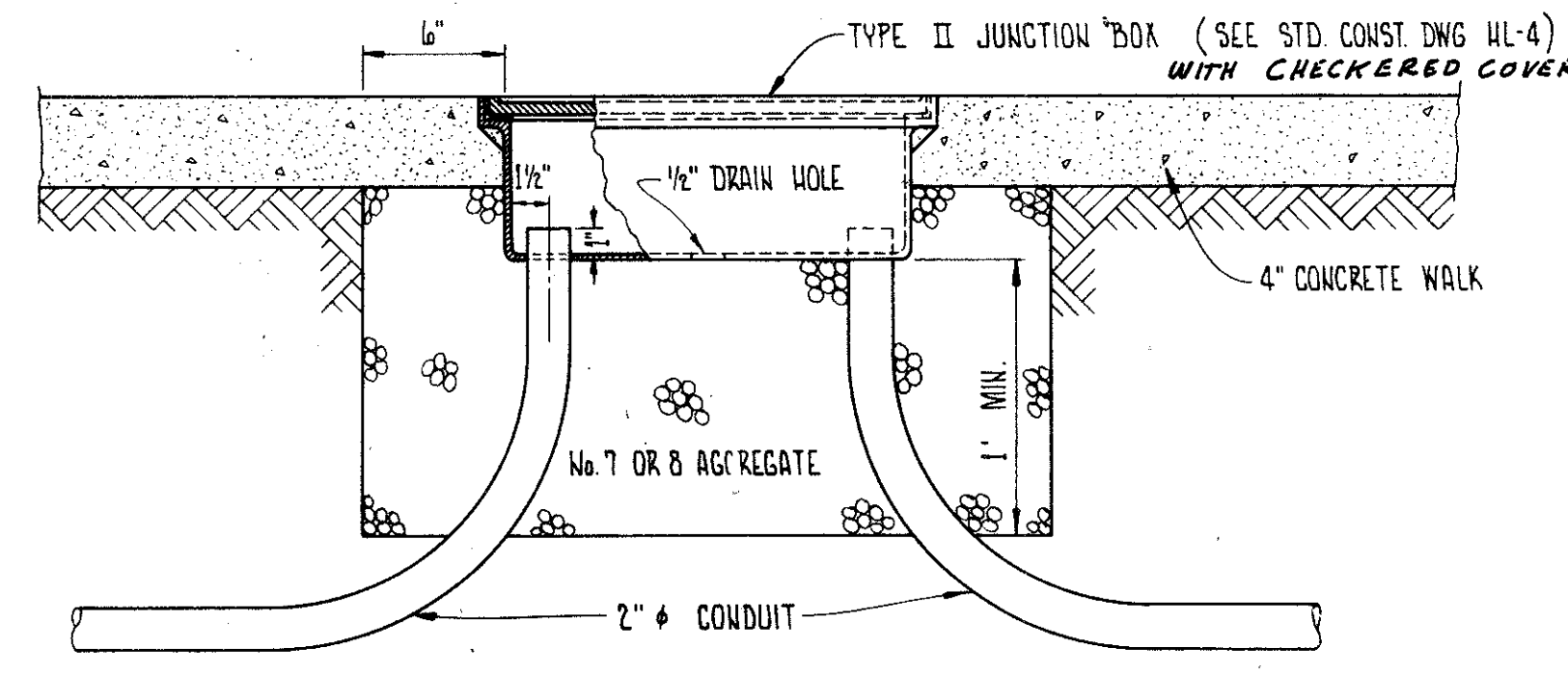
SIGN ATTACHMENT BRACKET (2 REQ'D PER SIGN)



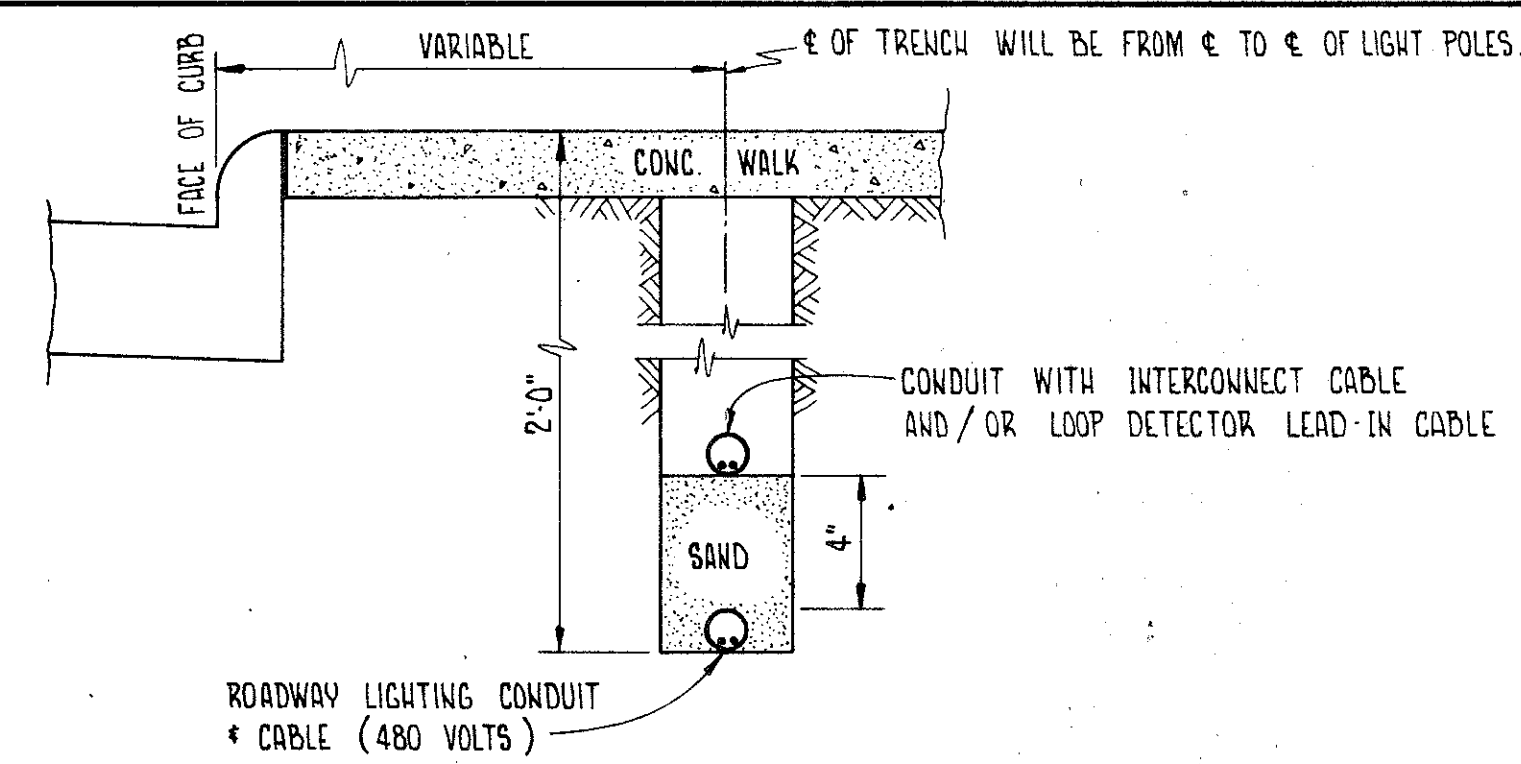
844 - SIGN BACKING ASSEMBLY, AS PER PLAN

THIS ITEM OF WORK SHALL CONSIST OF THE FURNISHING AND ERECTION OF SIGN BACKING ASSEMBLIES AS DETAILED ON THIS SHEET. THESE ASSEMBLIES SHALL CONSIST OF No. 2 POST STOCK CUT TO THE REQUIRED LENGTH AND HOT DIPPED GALVANIZED IN ACCORDANCE WITH ASTM A123 ALUMINUM GUSSET PLATES AND ALL NECESSARY HARDWARE. THE STEEL HARDWARE SHALL ALSO BE HOT DIPPED GALVANIZED IN ACCORDANCE WITH ASTM A123. HARDWARE MADE OF STAINLESS STEEL NEED NOT BE GALVANIZED.

PAYMENT FOR "ITEM 844 - SIGN BACKING ASSEMBLY, AS PER PLAN" WILL BE MADE AT THE CONTRACT UNIT PRICE BID PER EACH WHICH SHALL BE FULL COMPENSATION FOR ALL LABOR MATERIALS TOOLS EQUIPMENT AND OTHER INCIDENTALS NECESSARY TO COMPLETE THIS ITEM OF WORK READY FOR THE ERECTION OF THE SIGN PANELS.



PULL BOX, AS PER PLAN



CABLE IN TRENCH ARRANGEMENT

8
11