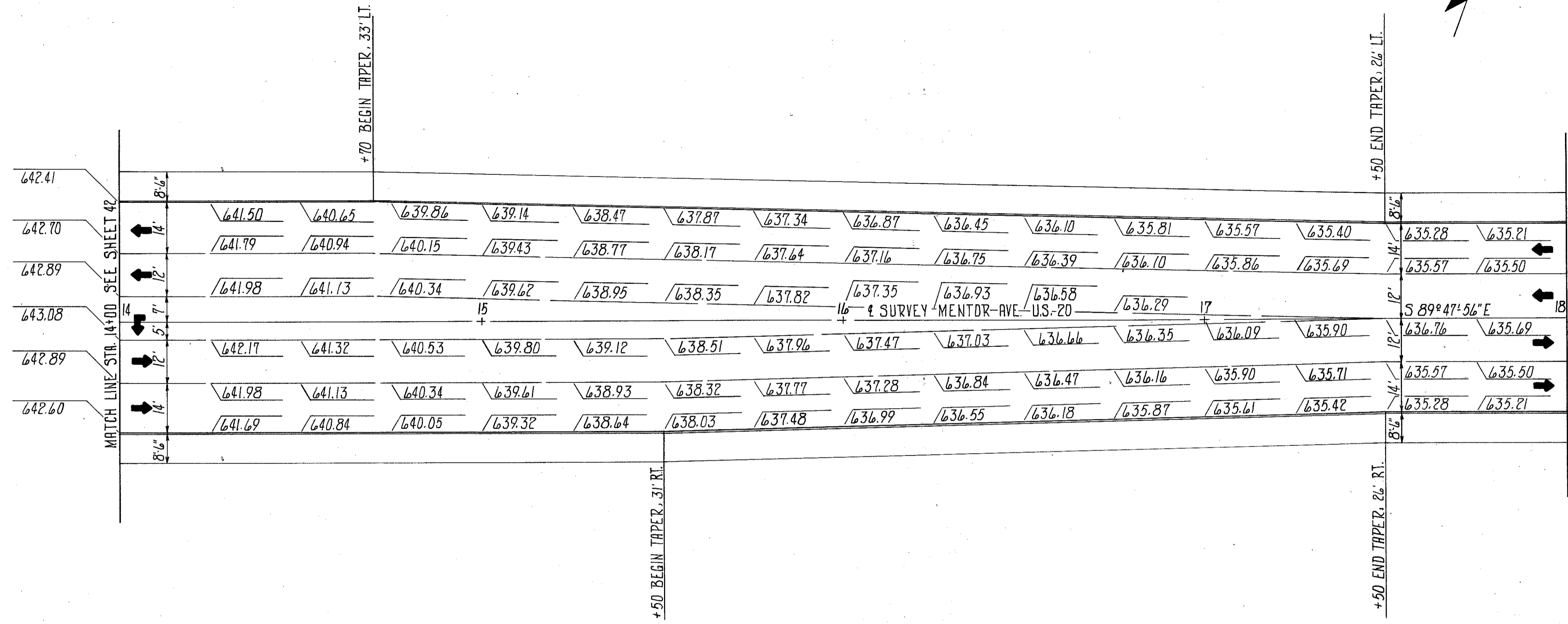


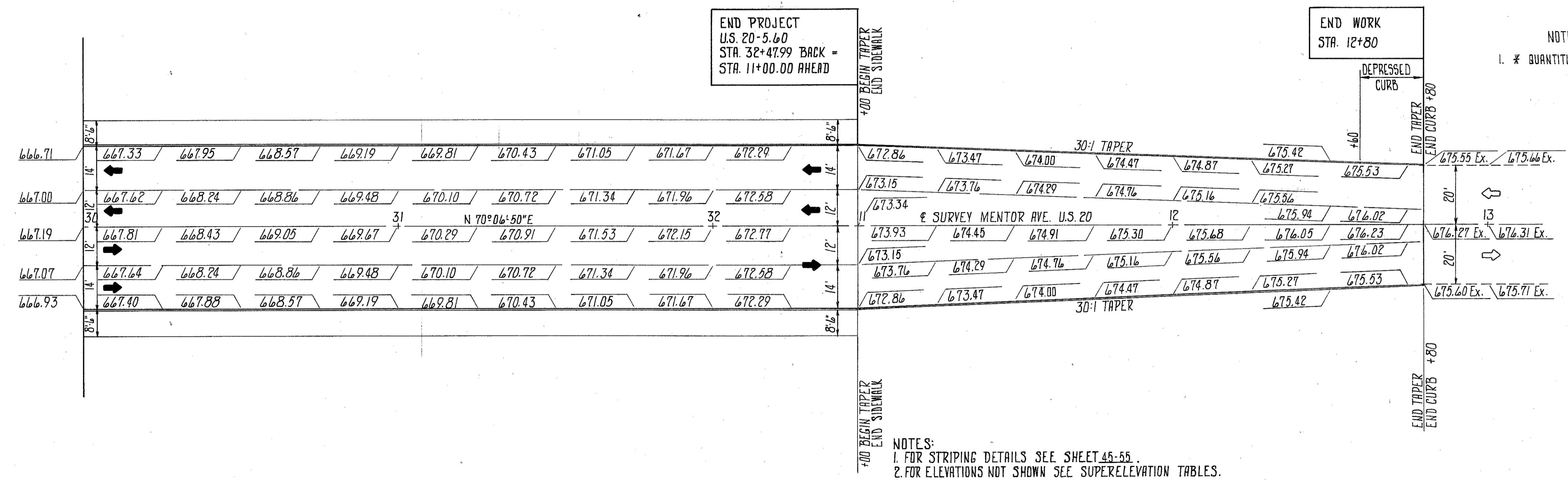
CALC: WDB 5/77
 CHK: BT 6/77

FHWA REGION	STATE	PROJECT
5	OHIO	

LAKE COUNTY
LAK-20-5.60



PAVEMENT QUANTITIES B.R.F. FUNDS			
U.S. 20 STA. 11+00 TO STA. 26+00			
ITEM	DESCRIPTION	UNIT	QUANTITY*
301	6" BITUMINOUS AGGREGATE BASE	CY.	9
404	1" ASPHALT CONCRETE AC-20 FOR DRIVEWAYS	CY.	2
452	8" PLAIN PORTLAND CEMENT CONCRETE PAVEMENT	S.Y.	444
608	4" CONCRETE WALK	S.F.	16538
609	CURB TYPE 3-A	L.F.	28
611	REINFORCED CONCRETE APPROACH		
801	SLAB T=15"	S.Y.	295
	8" PORTLAND CEMENT CONCRETE BASE	S.Y.	6796
310	6" SUBBASE GRADING A	CY.	1232
402	1 3/4" ASPHALT CONCRETE AC-20	CY.	325
404	1 1/4" ASPHALT CONCRETE AC-20	CY.	232
407	TACK COAT	GAL.	668
407	COVER AGGREGATE	TON	23.4
609	CURB TYPE 2-B	L.F.	2070
609	CURB TYPE 6	L.F.	69
203	SUBGRADE COMPACTION	S.Y.	7390



NOTE:
1. * QUANTITIES CARRIED TO GENERAL SUMMARY SEE SHEET 13&14

NOTES:
1. FOR STRIPING DETAILS SEE SHEET 45-55.
2. FOR ELEVATIONS NOT SHOWN SEE SUPERELEVATION TABLES.

