

QUANTITIES ("F" FUNDS)
 ERIE ST., VINE ST. AND U.S. 20 TO STA. 11+00.00,
 STA. 26+00 TO STA. 32+47.99 BK+ STA. 11+00 AND TO STA. 12+80

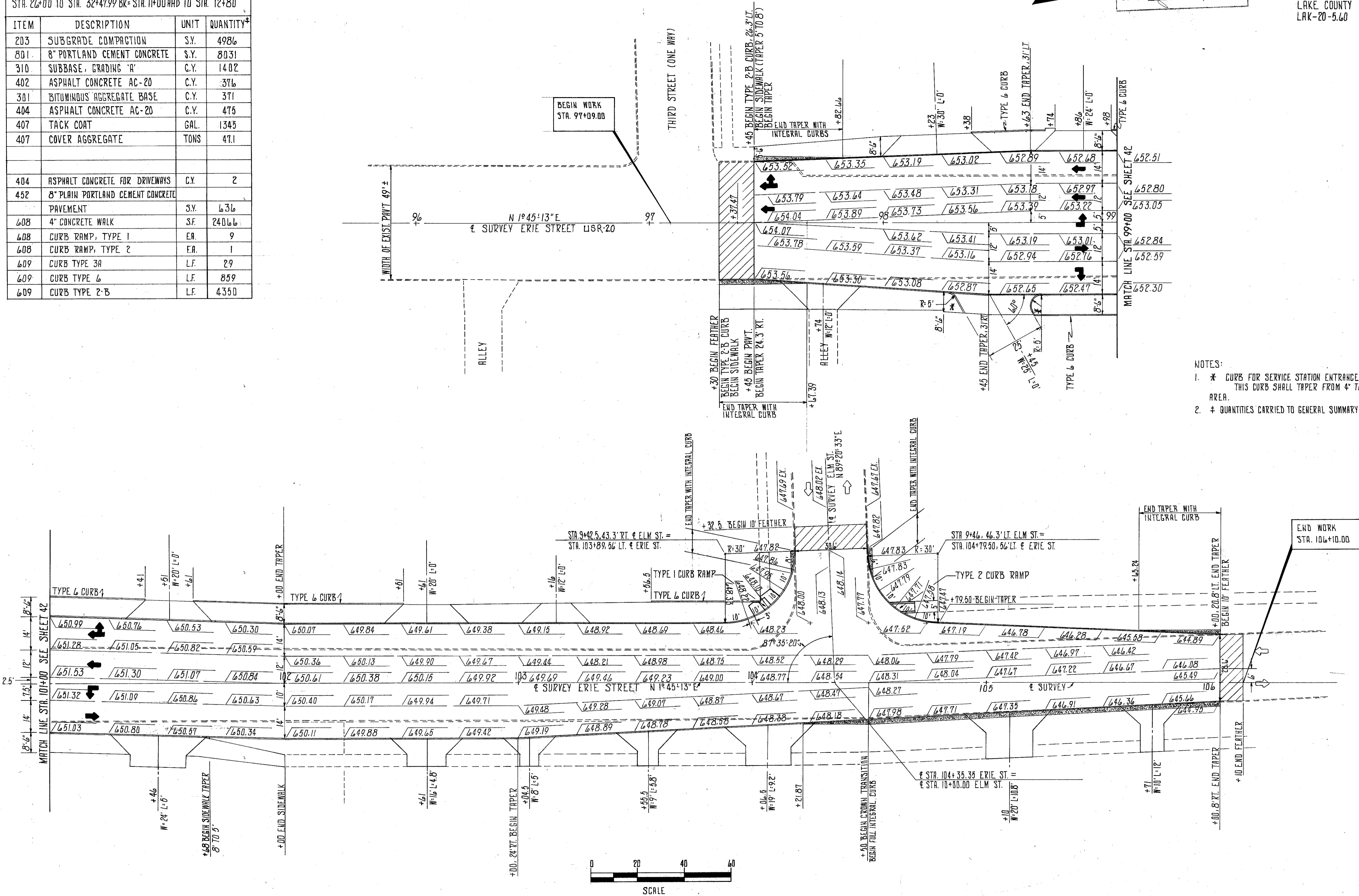
ITEM	DESCRIPTION	UNIT	QUANTITY [±]
203	SUBGRADE COMPACTION	S.Y.	4986
801	8" PORTLAND CEMENT CONCRETE	S.Y.	8031
310	SUBBASE, GRADING 'A'	C.Y.	1402
402	ASPHALT CONCRETE AC-20	C.Y.	376
301	BITUMINOUS AGGREGATE BASE	C.Y.	371
404	ASPHALT CONCRETE AC-20	C.Y.	475
407	TACK COAT	GAL.	1345
407	COVER AGGREGATE	TONS	47.1
404	ASPHALT CONCRETE FOR DRIVEWAYS	C.Y.	2
452	8" PLAIN PORTLAND CEMENT CONCRETE PAVEMENT	S.Y.	636
608	4" CONCRETE WALK	S.F.	24066
608	CURB RAMP, TYPE 1	EA.	9
608	CURB RAMP, TYPE 2	EA.	1
609	CURB TYPE 3A	L.F.	29
609	CURB TYPE 6	L.F.	859
609	CURB TYPE 2-B	L.F.	4350

FHWA REGION	STATE	PROJECT
5	OHIO	

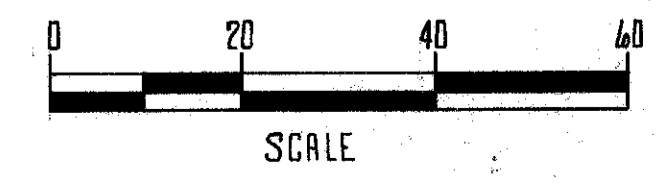
43
55

LAKE COUNTY
LAK-20-5.60

CALC: 9209 5/77
 CHK: 6/77



- NOTES:
- * CURBS FOR SERVICE STATION ENTRANCES IS CURB TYPE 3-A. THIS CURB SHALL TAPER FROM 4" TO 0" THROUGH THE SIDEWALK AREA.
 - ± QUANTITIES CARRIED TO GENERAL SUMMARY SEE SHEET 13 & 14



PAVEMENT DETAILS ERIE STREET