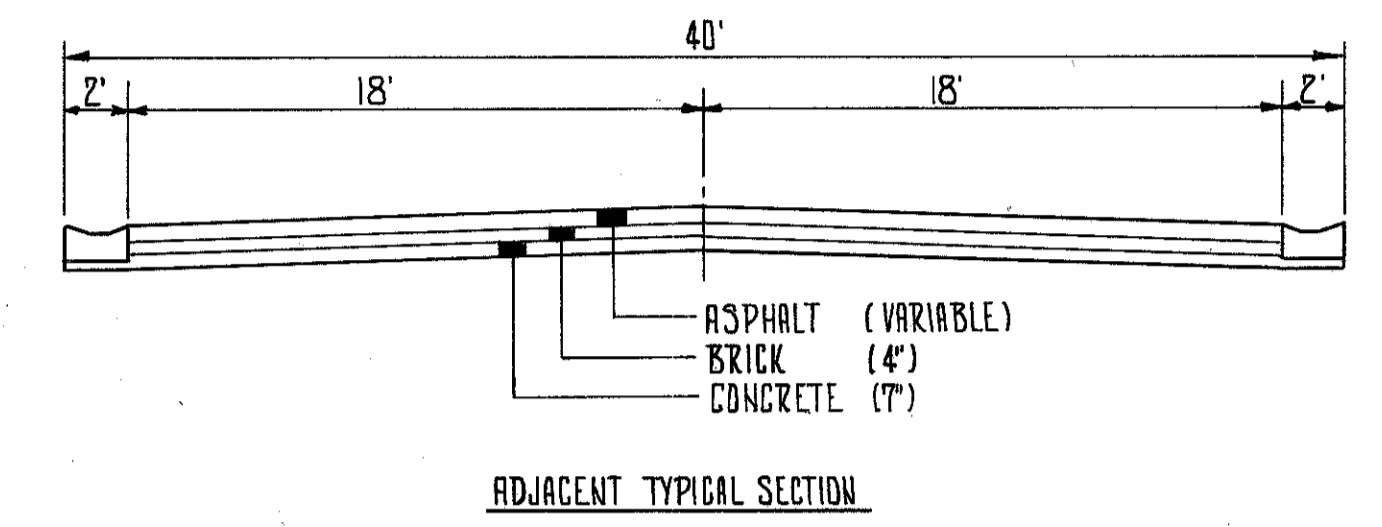
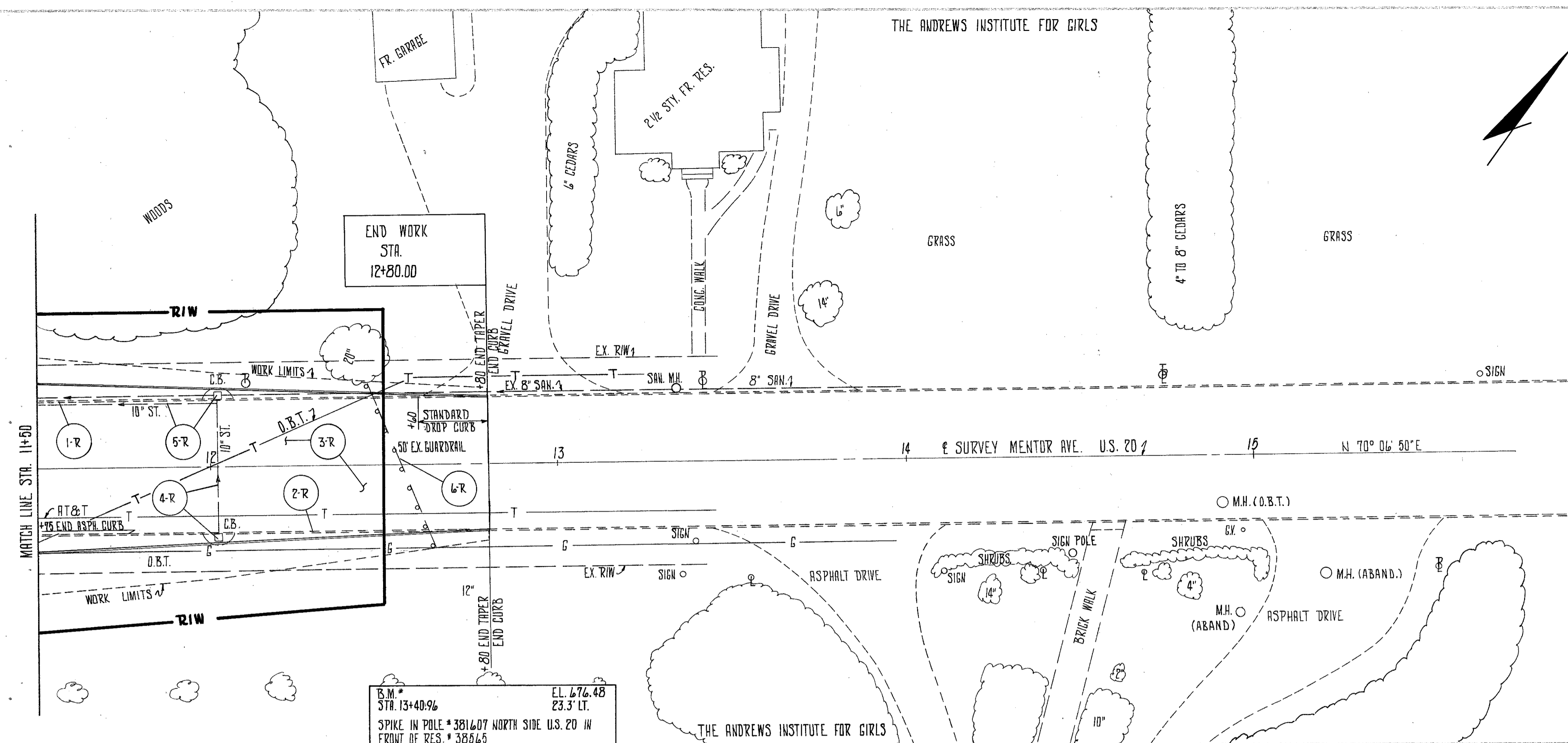


LAKE COUNTY
LAK-20-3-60

CALC: ROB 7/77
CHK: W.D. 8/77

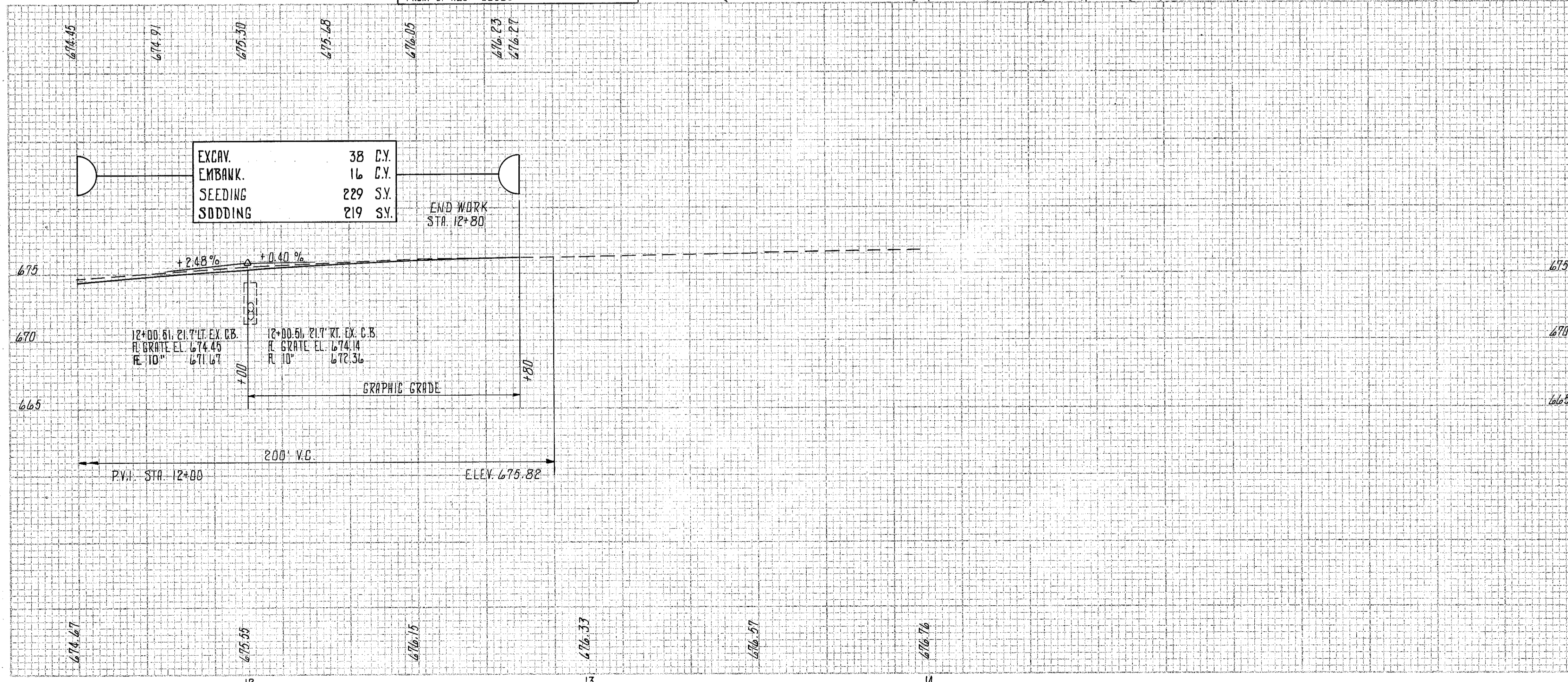
THE ANDREWS INSTITUTE FOR GIRLS



NOTES:

- FOR PAVEMENT DETAILS SEE SHEET 44
- FOR EXIST. UNDERGROUND UTILITIES SEE SHEET 41

B.M. STA. 13+40.96 EL. 676.48
23.3' LT.
SPIKE IN POLE # 381607 NORTH SIDE U.S. 20 IN FRONT OF RES. # 385665



EXCAV.	38 C.Y.
EMBANK.	16 C.Y.
SEEDING	229 S.Y.
SODDING	219 S.Y.

REF.	STATION TO STATION	SIDE	202				
			CURB REMOVED	PAVEMENT REMOVED	CATCH BASIN REMOVED	PIPE REMOVED UNDER 24"	GUARDRAIL REMOVED
1-R	11+50 TO 12+80	LT.	130				
2-R	11+50 TO 12+80	RT.	130				
3-R	11+50 TO 12+80	L&R		520			
4-R	12+01	L&R			1	42	
5-R	11+50 TO 12+01	LT.			1	51	
6-R	12+45 TO 12+64	L&R					50
TOTAL			260	520	2	93	50