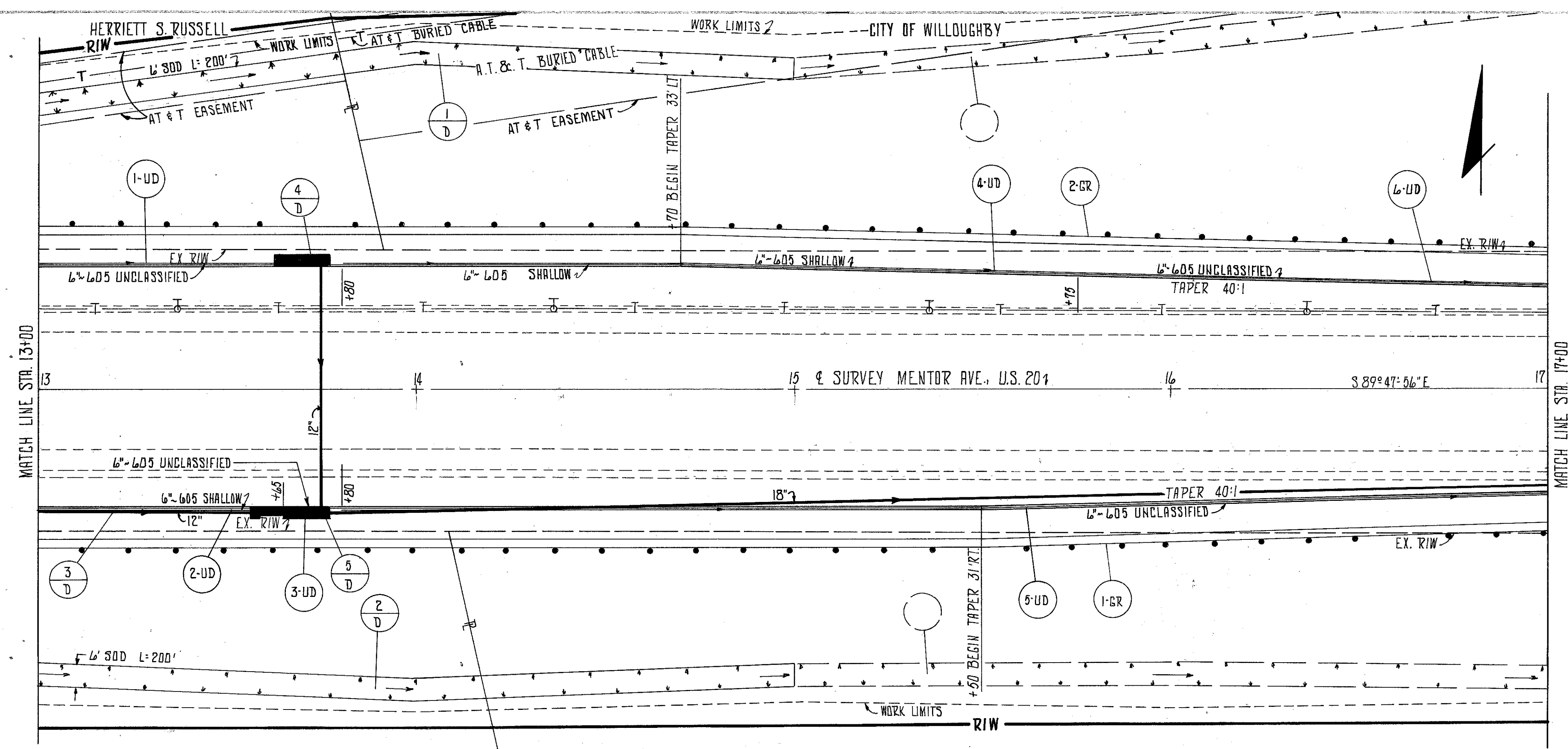


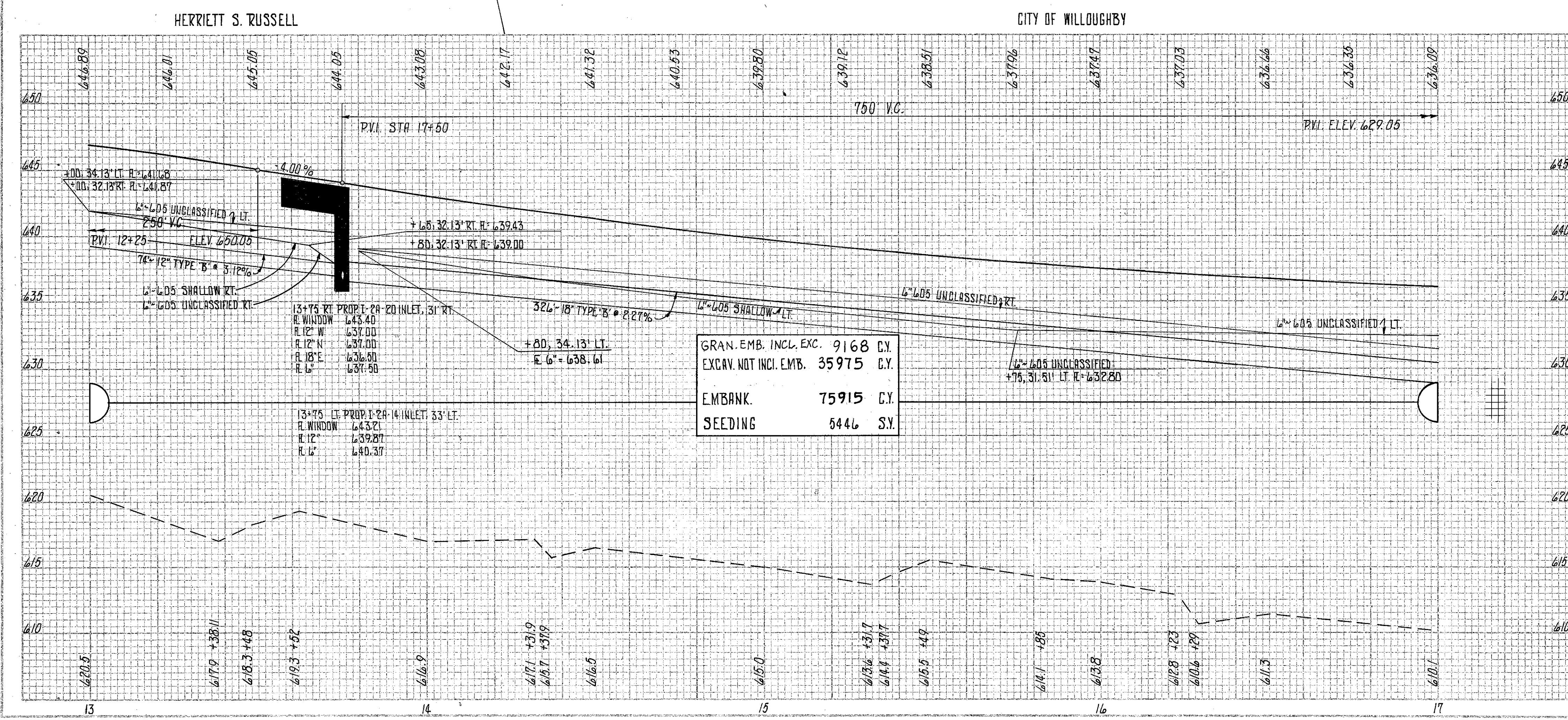
LAKE COUNTY
LAK-20-5.60

CALC: ROB 7/77
CHK: WOK 8/77



NOTES

1. FOR ADDITIONAL WORK LIMITS AND R/W SEE SHEET 28
2. FOR PAVEMENT DETAILS SEE SHEET 43 & 44
3. FOR STORM SEWER DETAILS SEE SHEET 35
4. FOR EROSION CONTROL QUANTITIES NOT SHOWN SEE SHEET 28
5. EXISTING STRUCTURE TO BE REMOVED BY OTHERS.



REF.	STATION TO STATION	SIDE	603		604		605		606	660
			12" TYPE 'B'	18" TYPE 'B'	I-24-14 INLET	I-24-20 INLET	6" SHALLOW U.D.	6" UNCLASS. U.D.		
			L.F.	L.F.	EA.	EA.	L.F.	L.F.	L.F.	S.Y.
1-D	13+00 TO 15+00	LT.								134
2-D	13+00 TO 15+00	RT.								134
3-D	13+00 TO 13+75	RT.	74							
4-D	13+75	LT.	66		1					
5-D	13+75 TO 17+00	RT.		326		1				
1-GR	13+00 TO 17+00	RT.								400
2-GR	13+00 TO 17+00	LT.								400
1-UD	13+00 TO 13+75	LT.						75		
2-UD	13+00 TO 13+65	RT.					65			
3-UD	13+65 TO 13+75	RT.						10		
4-UD	13+80 TO 15+75	LT.					195			
5-UD	13+80 TO 17+00	RT.						320		
6-UD	15+75 TO 17+00	LT.					125			
TOTALS			140	326	1	1	260	530	800	268