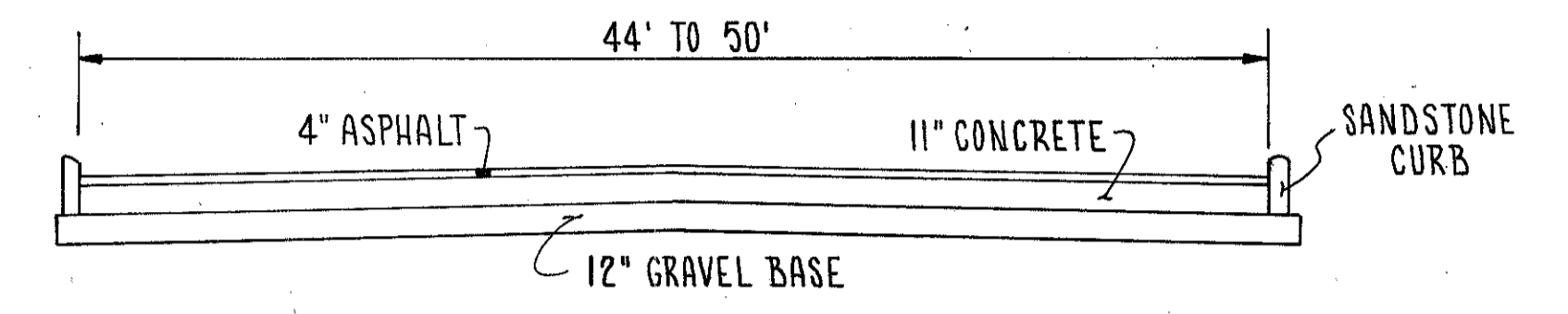
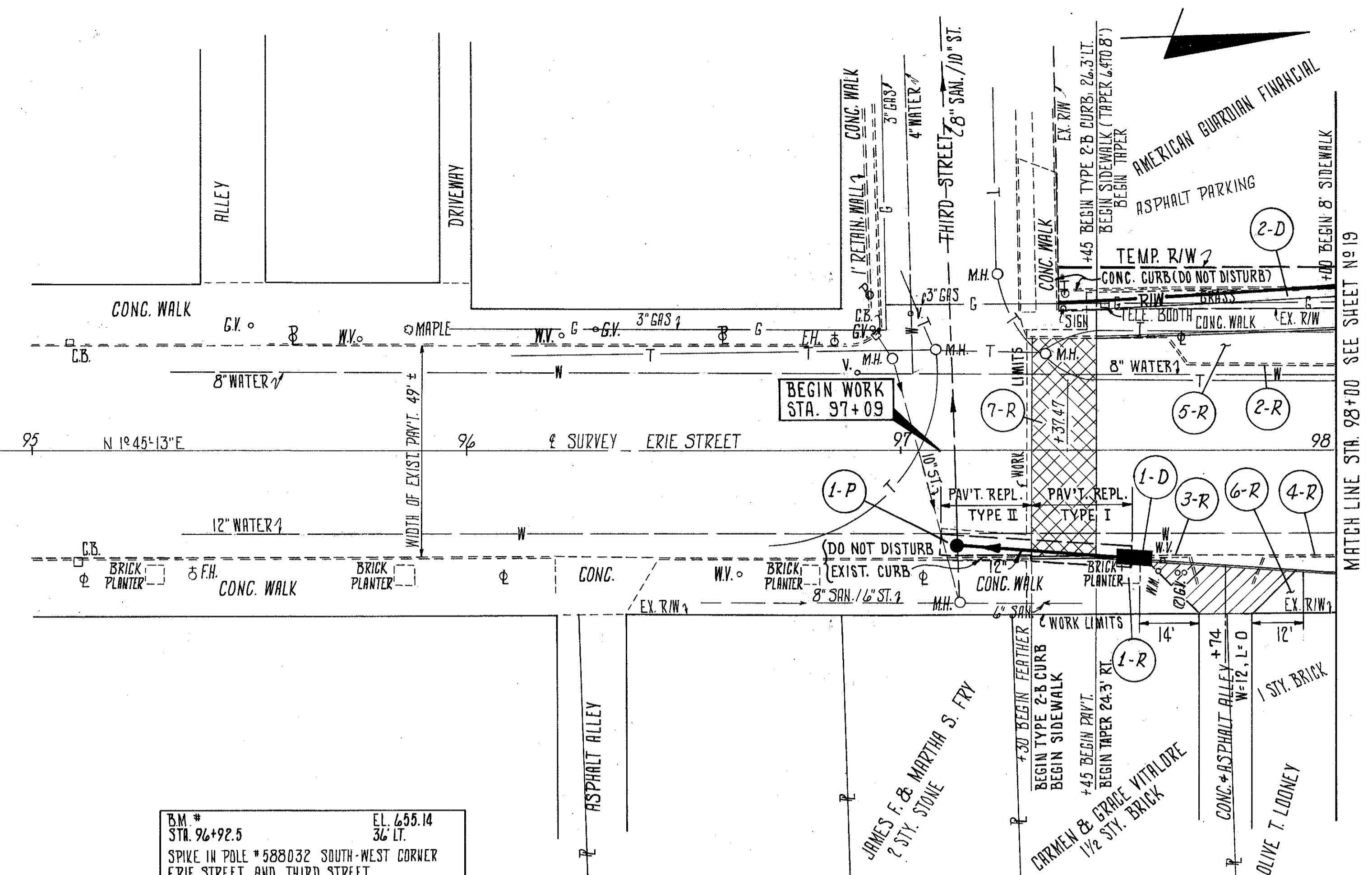


LAKE COUNTY
LAK-20-5.60

CAL'G: ROB 7/77
CHK: W.D. 8/77



EXISTING TYPICAL - ERIE STREET

- LEGEND**
- ITEM 452 PLAIN PORTLAND CEMENT CONCRETE PAVEMENT (8")
 - ITEM 404 BUTT JOINT TYPE FEATHER AREA

- NOTES**
- FOR PAVEMENT DETAILS SEE SHEET 43
 - FOR DRIVE PROFILES SEE SHEET 31
 - FOR DRIVE DETAILS SEE SHEET 6, 7 & 43
 - FOR EXISTING UNDERGROUND UTILITIES SEE SHEET 31

BM # STA. 96+92.5 EL. 655.14
SPIKE IN POLE #588032 SOUTH-WEST CORNER
ERIE STREET AND THIRD STREET.



EXCAV. 33 C.Y.
EMBANK. 0 C.Y.
SEEDING 0 S.Y.

* AS PER PLAN

REF.	STATION TO STATION	SIDE	202		202	202	301	404	603	604	604	660
			STRUCTURE REMOVED	CURB REMOVED								
			LUMP	L.F.	S.F.	S.Y.	C.Y.	C.Y.	L.F.	EA.	EA.	S.Y.
1-D	97+14 TO 97+54	RT.								38	1	1
2-D	97+45 TO 98+00	LT.										18
1-P	97+09 TO 97+54	RT.					10	1				
1-R	97+53	RT.	LUMP									
2-R	97+45 TO 98+00	LT.		58								
3-R	97+30 TO 97+68	RT.		43								
4-R	97+81 TO 98+00	RT.		24								
5-R	97+45 TO 98+00	LT.			626							
6-R	97+30 TO 98+00	LT.			894							
7-R	97+30 TO 97+45	L+R				84						
TOTALS			LUMP	125	1520	84	10	1	38	1	1	18