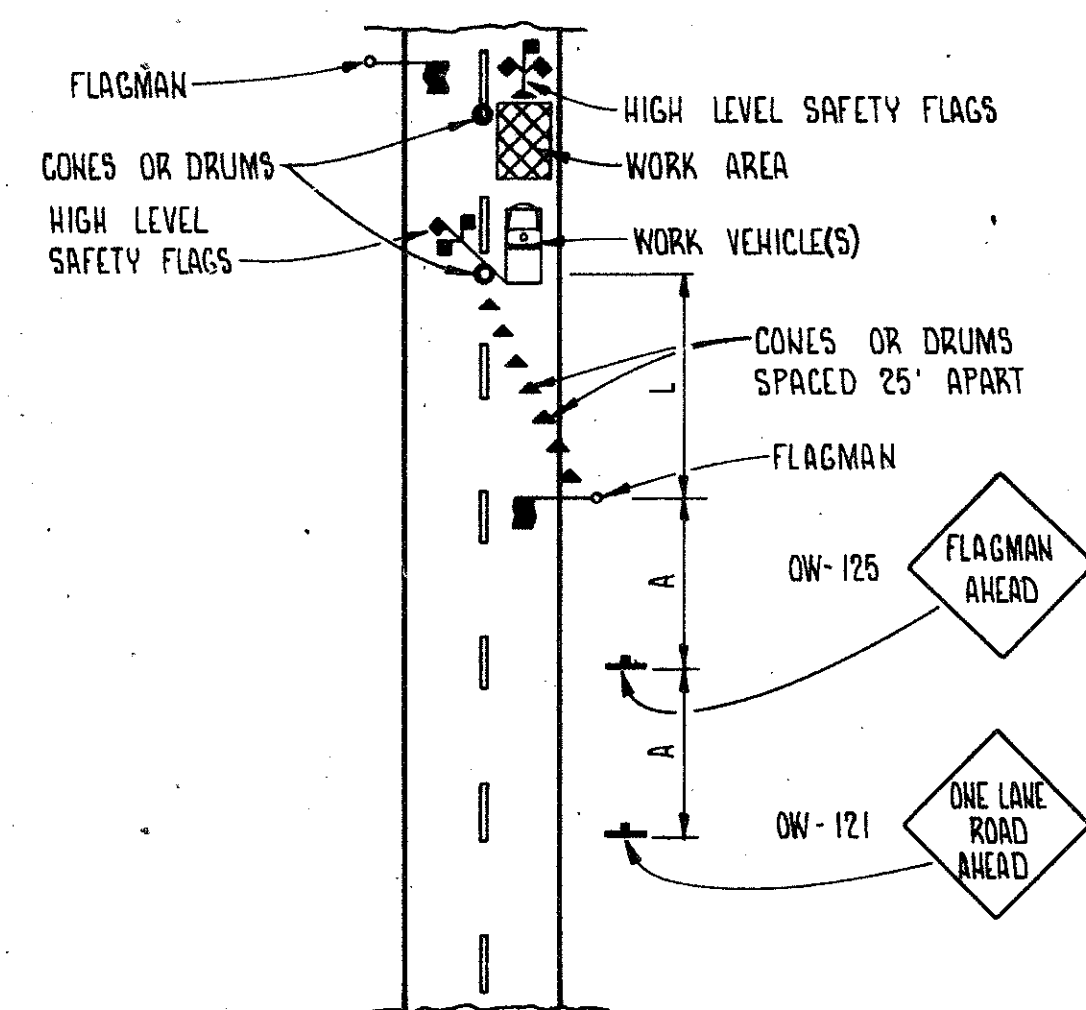


FHWA REGION	STATE	PROJECT	
5	OHIO		

9
85

LAKE COUNTY
LAK-20-5.60

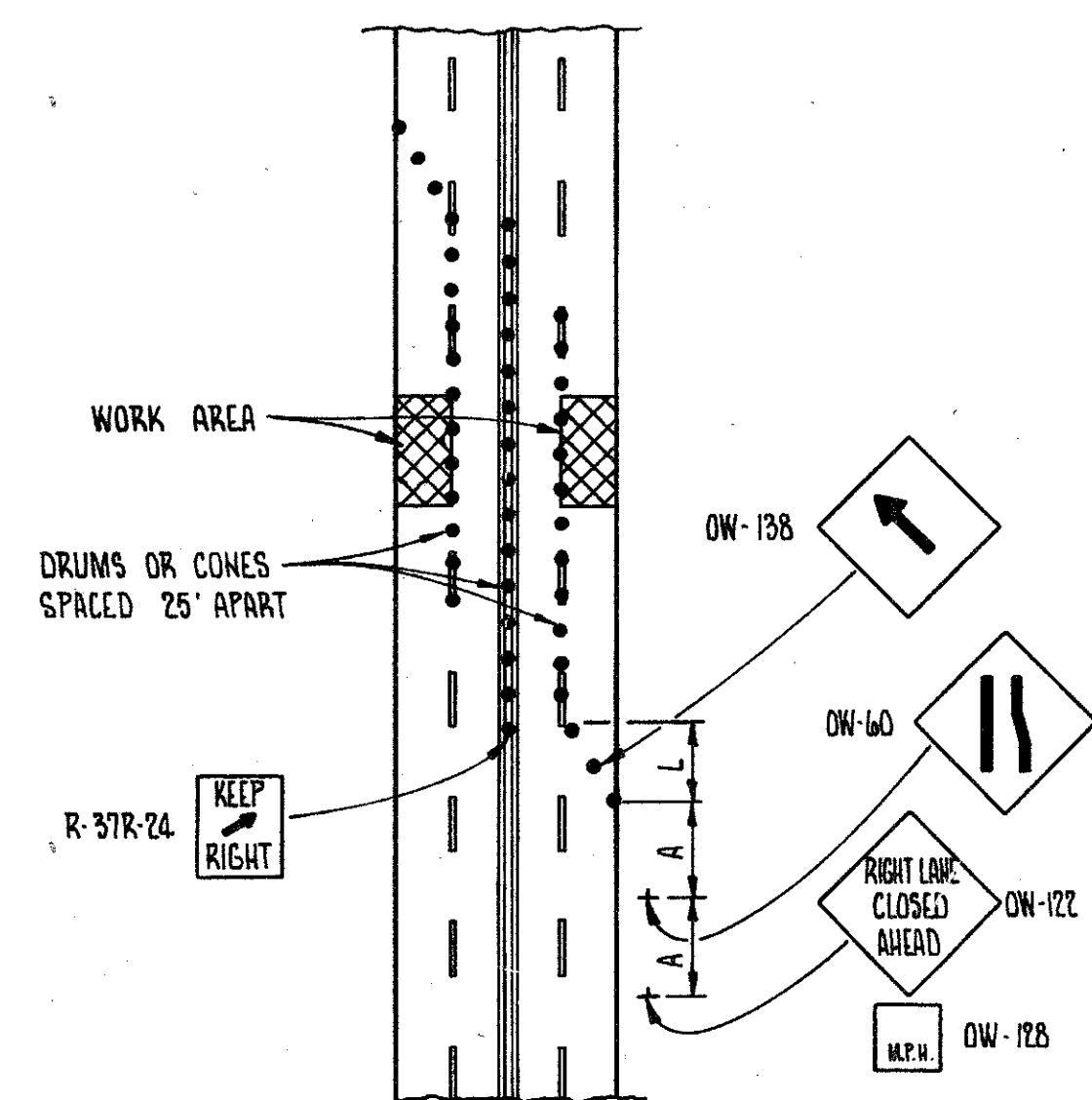
TRAFFIC CONTROL DEVICES FOR STATIONARY OPERATIONS IN ONE LANE



APPLICABLE NOTES: 1

I

TRAFFIC CONTROL DEVICES FOR CLOSING TWO LANES ON A 4-LANE UNDIVIDED ROADWAY



APPLICABLE NOTES: 1

II

NOTES

1. USE SIMILAR TREATMENT FOR OPPOSITE APPROACH.
2. FOR MAINTENANCE OF TRAFFIC NOTE SEE SHEET NO. 12

DISTANCES						
A	B	C	D	E	F	L
100'						200'