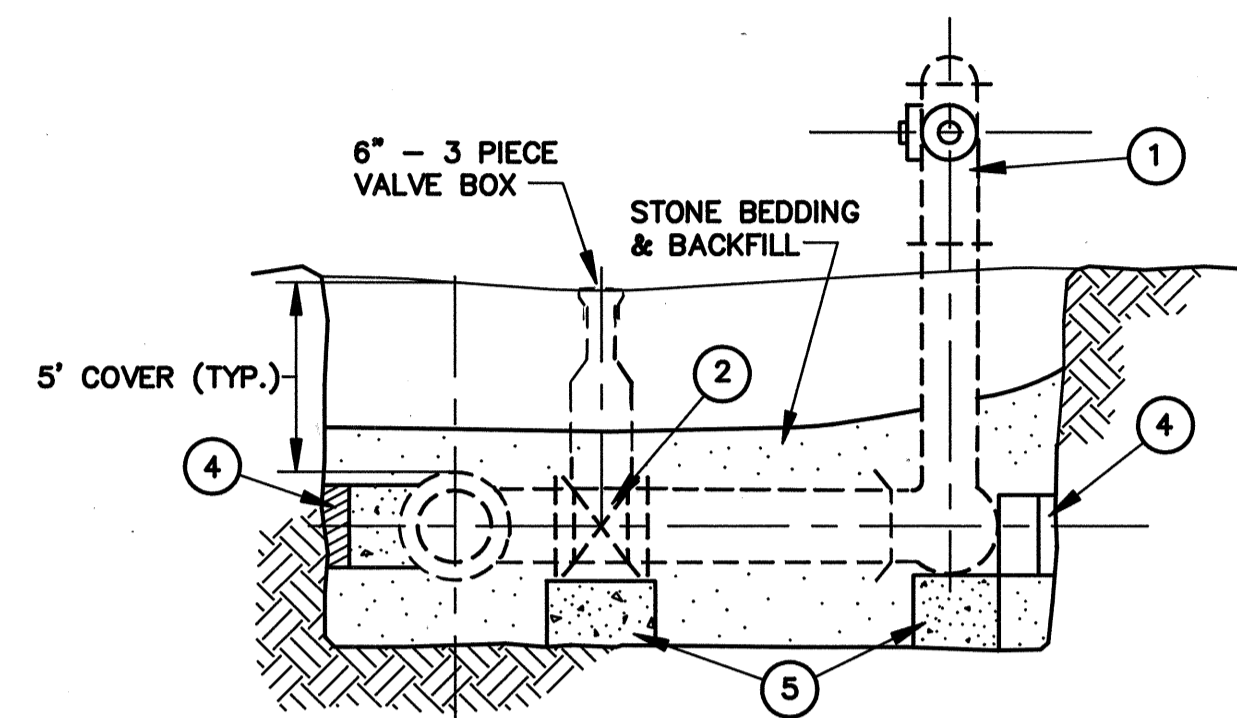


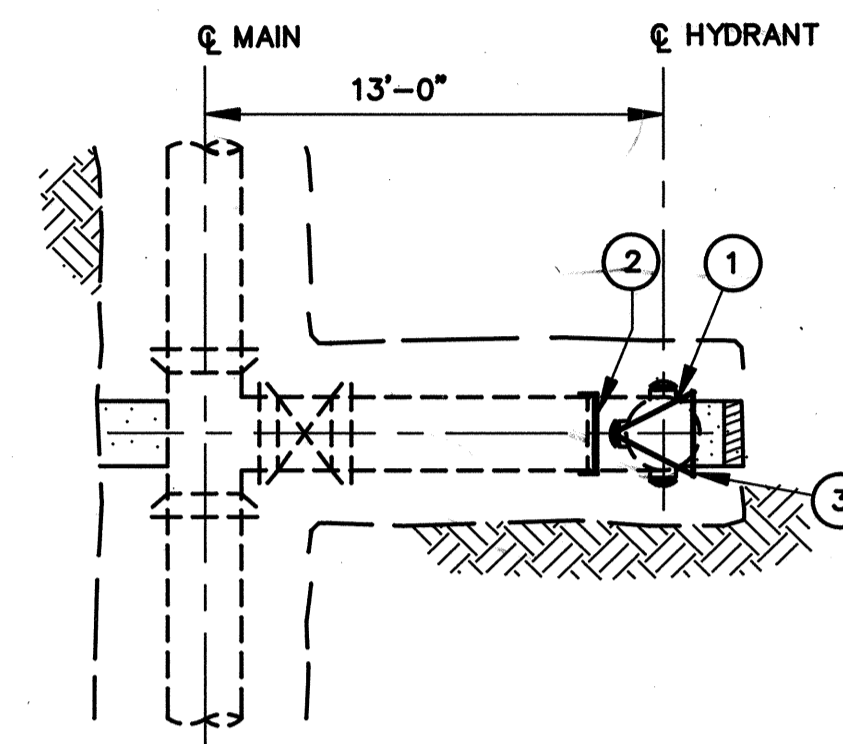
STANDARD LAKE COUNTY UTILITIES DEPARTMENT
 WATERWORK DETAILS



TYPICAL HYDRANT ASSEMBLY ELEVATION

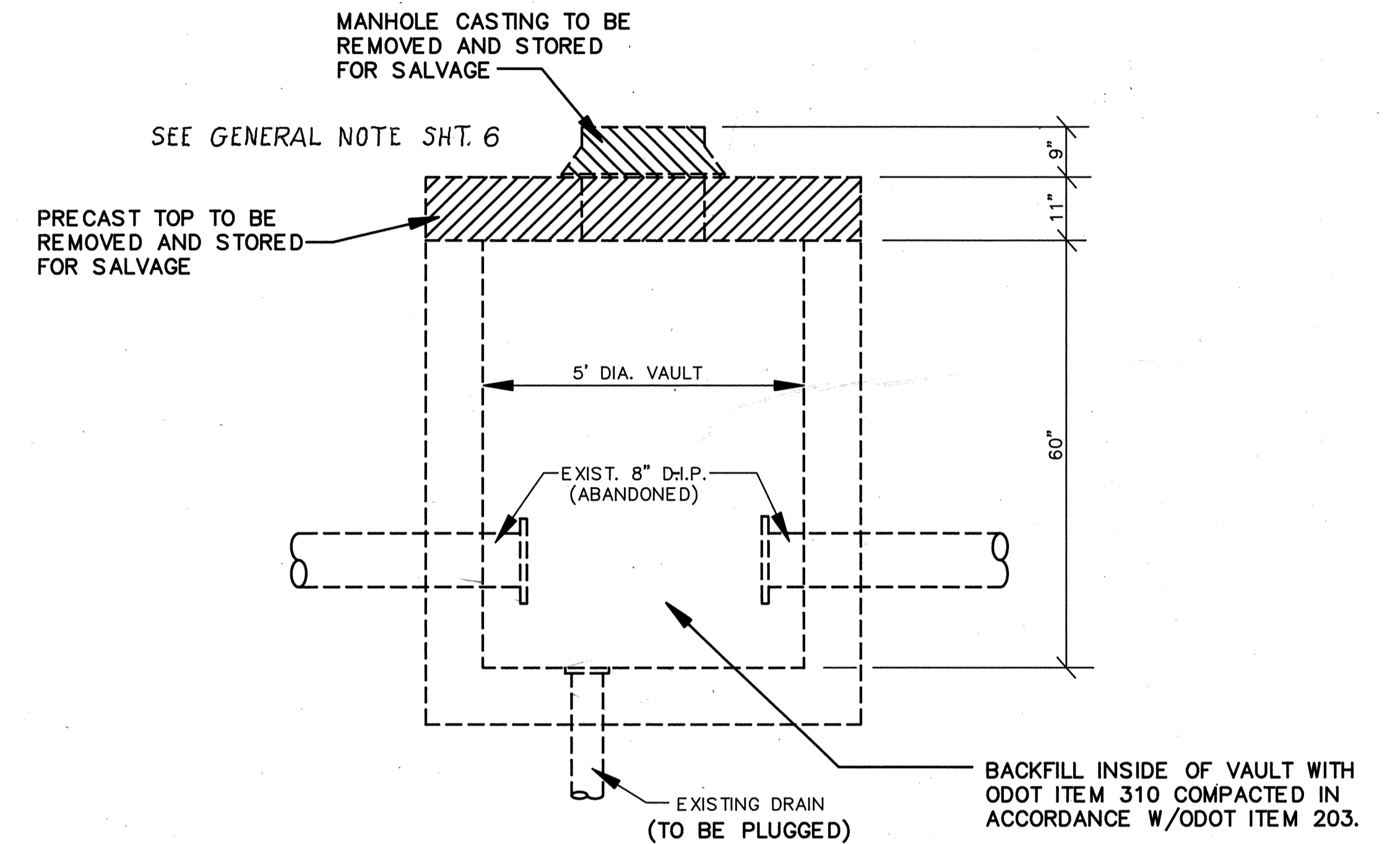
- ① HYDRANT, PER SPECIFICATIONS
- ② 6" ENCAPSULATED RESILIENT WEDGE GATE VALVE
- ④ CONCRETE BLOCKING WITH OAK WEDGES AGAINST UNDISTURBED EARTH
- ⑤ CONCRETE SUPPORT BLOCKING

NOTE:
 HYDRANT SHALL BE PRESSURE TESTED AGAINST FOOT VALVE, HYDRANT BONNET, CAPS, AND EXTENSIONS SHALL BE TESTED FOR LEAKS AT STATIC PRESSURE.

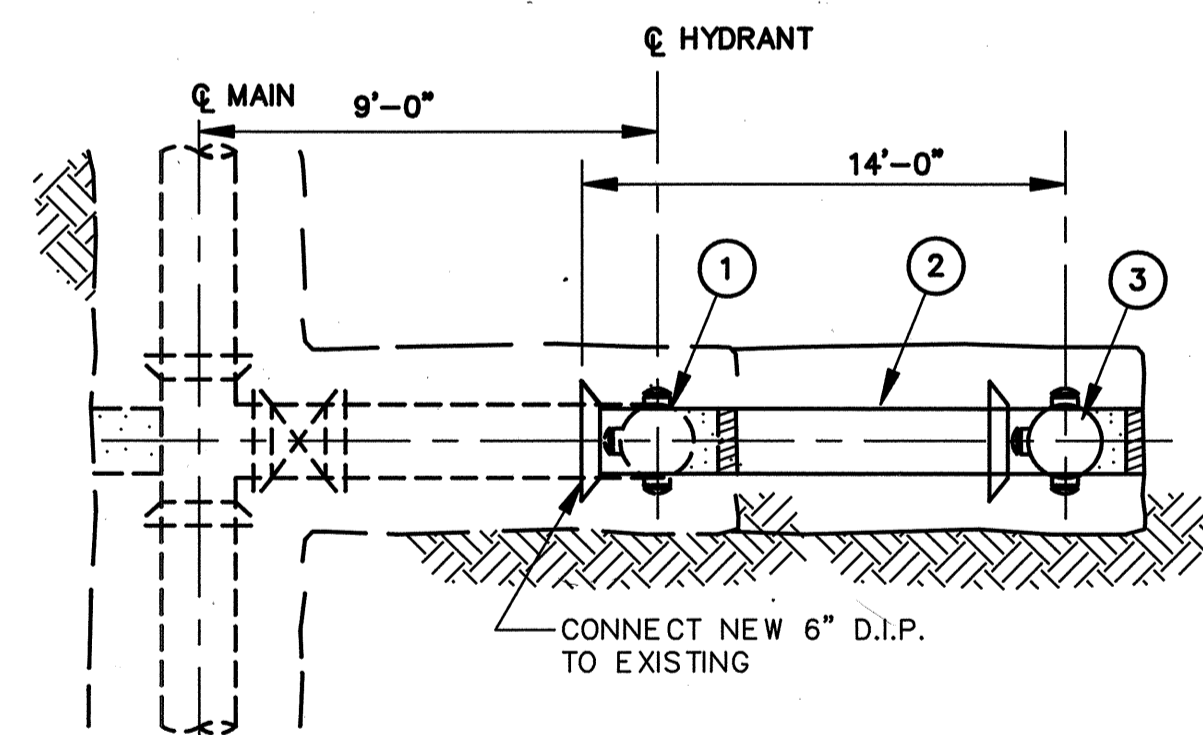


ITEM SPECIAL HYDRANT REMOVED
 STA. 16+14.5, LT.

- ① EXISTING HYDRANT REMOVED FOR STORAGE
- ② INSTALL 6" MECHANICAL JOINT CAP
- ③ INSTALL CONCRETE THRUST BLOCK

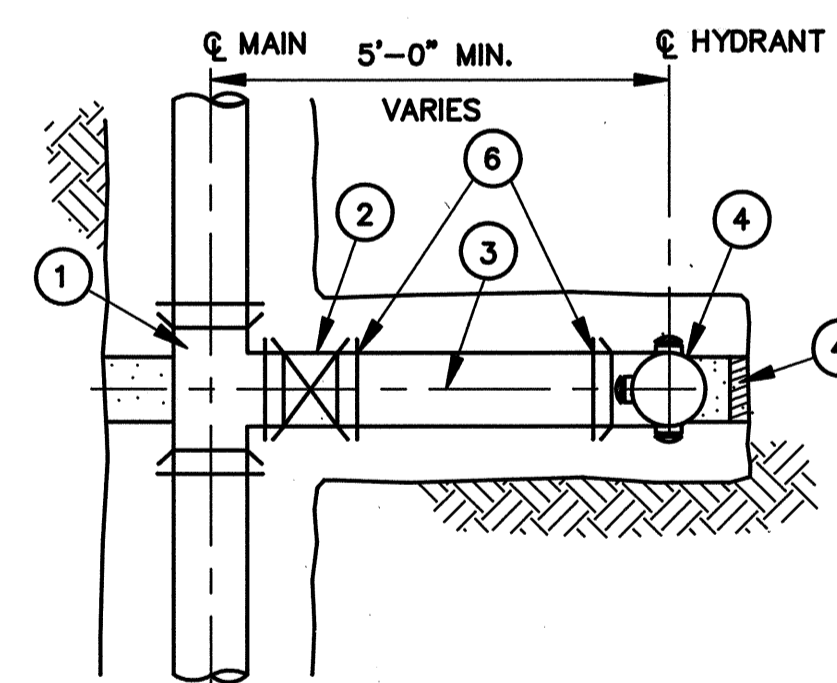


ITEM-202- METER VAULT ABANDONED



ITEM SPECIAL HYDRANT EXTENDED
 STA. 12+42, LT

- ① EXISTING HYDRANT REMOVED FOR STORAGE
- ② 6" D.I.P. HYDRANT LEAD (14')
- ③ NEW HYDRANT ASSEMBLY, KENNEDY K81 (GUARDIAN), MUELLER CENTURIAN 423, OR ENGINEER APPROVED EQUAL HYDRANT SHALL BE EQUIPPED WITH TWO HOSE NOZZLES OF 2 1/2" DIAMETER AND ONE 4 1/2" PUMPER NOZZLE. NOZZLE SHALL BE OF NATIONAL STANDARD THREAD.



ITEM SPECIAL HYDRANT ASSEMBLY, TYPE A
 STA. 17+50, LT.

- ① 12" x 6" CAST IRON, MECHANICAL JOINT TAPPING SLEEVE
- ② 6" TAP VALVE AND BOX
- ③ 6" D.I.P. PIPE
- ④ NEW HYDRANT ASSEMBLY, KENNEDY K81 (GUARDIAN), MUELLER CENTURIAN 423, OR ENGINEER APPROVED EQUAL HYDRANT SHALL BE EQUIPPED WITH TWO HOSE NOZZLES OF 2 1/2" DIAMETER AND ONE 4 1/2" PUMPER NOZZLE. NOZZLE SHALL BE OF NATIONAL STANDARD THREAD.
- ⑥ RETAINER GLANDS