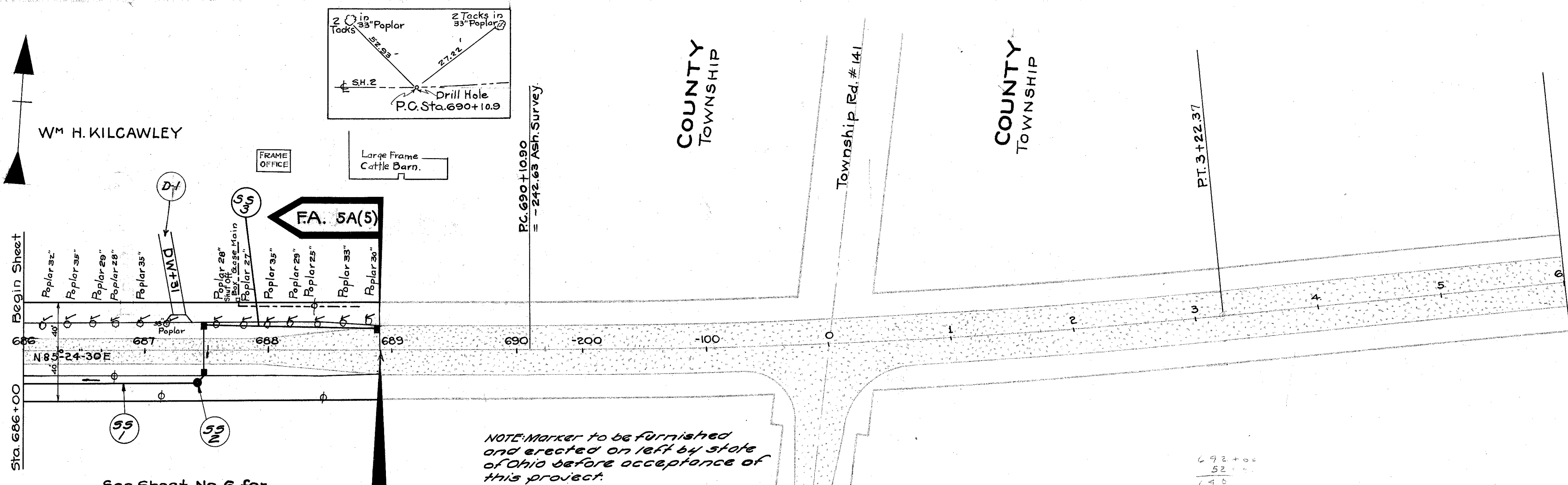


LAKE COUNTY  
S.H. 2 SEC. Q (Pt)

**DRIVES & APPROACHES**

ITEM	STATION	SIDE	T-70 Sq. Yds.	I-17 Cu. Yds.	DETAILED ON SHEET NO.
D-1	687+31	Lt.	11.9	4.3	38
<b>TOTAL</b>			<b>11.9</b>	<b>4.3</b>	



NOTE: Marker to be furnished and erected on left by state of Ohio before acceptance of this project.

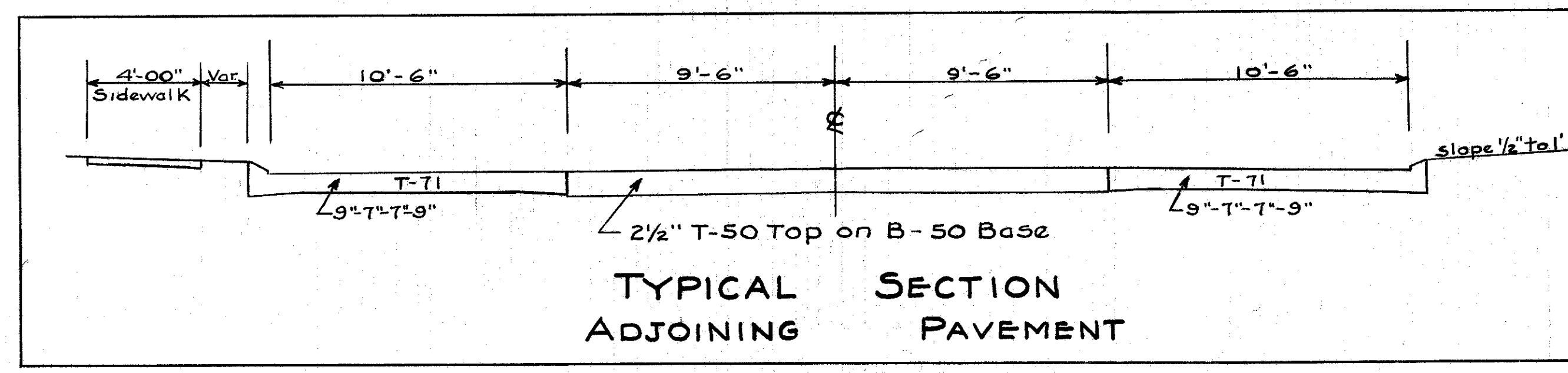
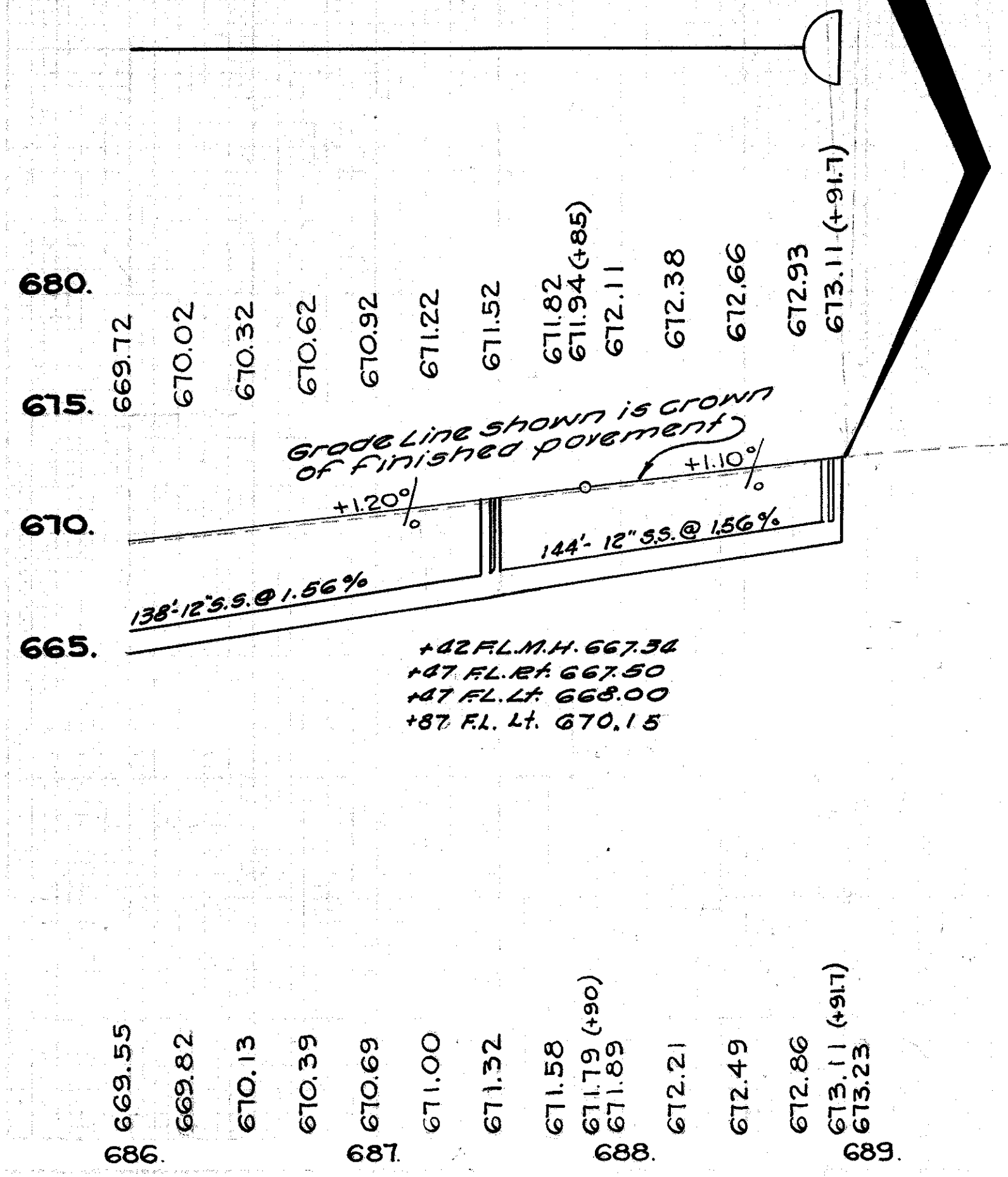
See Sheet No. 6 for detail of Transition

B.M. No. 24: Drill hole in top of Conc. curb at end on N. curb 20.5' left of Sta. 688+92 Elevation = 673.185

END F.A. Proj. No. 5A(5) STA. 688+91.7  
EQUALS F.A.P. No. 5 STA. 691+79.21

**CURVE DATA**

Δ = 5° 39' Left  
D = 1° 00'  
T = 282.70  
L = 565  
R = 9723.58



**STORM SEWERS**

ITEM NO.	SIDE	FROM STATION	TO STATION	PIPE LIN. FT.	PIPE UNDER PAVE. LIN. FT.	CATCH BASIN EACH	MAN-HOLES EACH
SS-1	RT.	686+00	687+42	138	12"	12"	13X13Y SPECIAL
SS-2	RT.	687+47		6	33	2	1
SS-3	Lt.	687+47	688+87	138		1	1
<b>Totals</b>				<b>144</b>	<b>171</b>	<b>2</b>	<b>1</b>

**REMOVAL OF TREES & STUMPS**

Station	Side	Dist from &	Size	Kind
686+15	Lt.	21.9'	32"	Poplar
686+35	Lt.	22.0'	35"	Poplar
686+56	Lt.	22.4'	29"	Poplar
686+76	Lt.	21.8	28"	Poplar
686+96	Lt.	21.7	35"	Poplar
687+17	Lt.	21.4	33"	Poplar
687+58	Lt.	21.7	28"	Poplar
687+79	Lt.	21.9	27"	Poplar
687+98	Lt.	22.3	35"	Poplar
688+19	Lt.	22.2	29"	Poplar
688+39	Lt.	22.6	25"	Poplar
688+60	Lt.	21.5	33"	Poplar
688+80	Lt.	22.2	30"	Poplar
<b>Total</b>				<b>13</b>

**REMOVAL OF EXIST. PAVE. REPLACE.**

STATION FROM TO	LENGTH LIN. FT.	WIDTH LIN. FT.	SQ. YDS.	8" B-7I SQ. YDS.
687+43	687+51	8	20	17.8
<b>TOTAL</b>				<b>17.8</b>

**SEALING (ONLY) EDGES OF EXIST. PAVE.**

FROM STATION	TO STATION	SIDE	LIN. FT.
686+00	688+91.7	Lt. & Rt.	1167
1 CROSSOVER (20x2)			40
<b>TOTAL</b>			<b>1207</b>