

LAKE COUNTY
 S.H. 2 SEC. Q(Pt)

DRIVES & APPROACHES						
ITEM	STATION	SIDE	T-70 Sq. Yds.	I-17 Cu. Yds.	Deduct Curb Lin. Ft.	Detailed on Sheet No.
D-1	675+19	Lt.	11.9	4.3	22	38
D-2	675+82	Lt.	11.9	4.3	22	38
D-3	676+50	Rt.	11.9	1.1	22	
D-4	677+16	Rt.	11.9	1.1	22	
D-5	678+19	Rt.	11.9	1.1	22	
D-6	679+19	Lt.	11.9	2.0	22	37
D-7	681+88	Lt.	11.9	2.0	22	37
D-8	684+30	Lt.	11.9	1.1	22	
TOTAL			95.2	17.0	176	

Indicated Thus

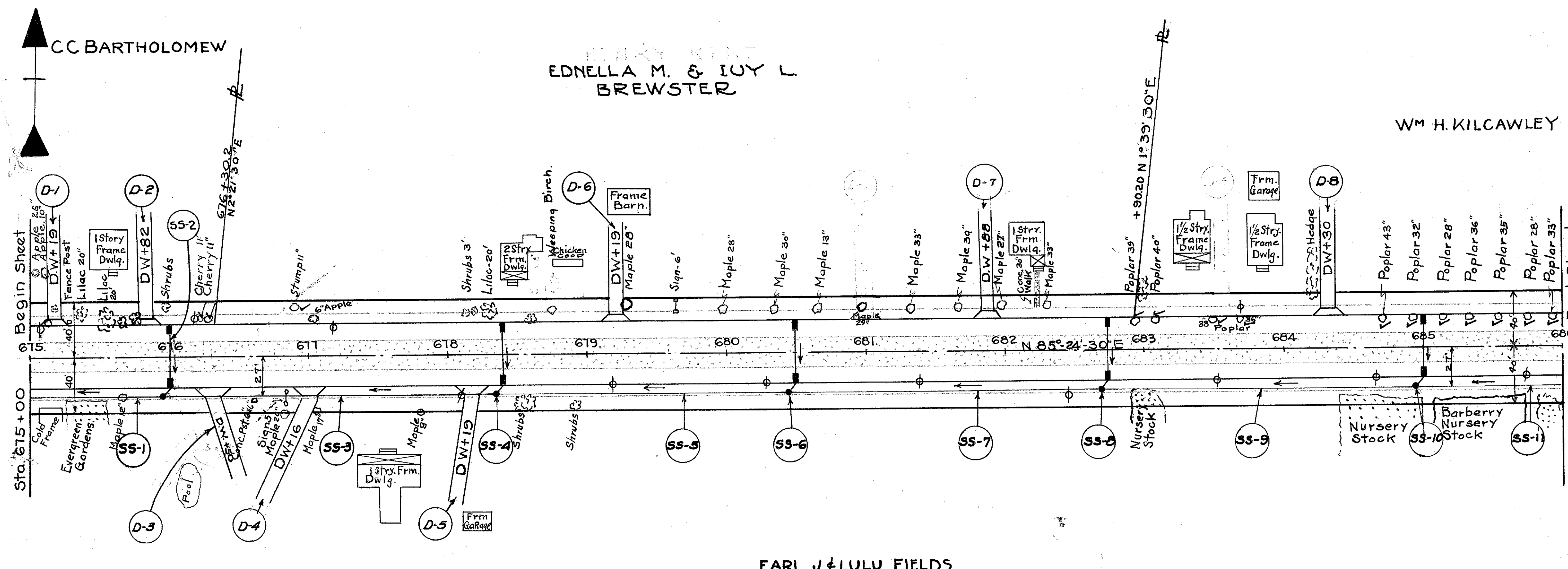
REMOVAL OF TREES & STUMPS				
Station	Side	Dist. from C	Size	Kind
676+90	Lt.	35.0'	11"	Stump
682+93	Lt.	20.8'	39"	Poplar
683+08	Lt.	20.6'	40"	Poplar
683+49	Lt.	21.0'	38"	Poplar
683+69	Lt.	29.7'	36"	Poplar
684+71	Lt.	21.4'	43"	Poplar
684+92	Lt.	21.6'	32"	Poplar
685+12	Lt.	21.8'	28"	Poplar
685+33	Lt.	21.5'	36"	Poplar
685+54	Lt.	21.7'	35"	Poplar
685+75	Lt.	21.8'	28"	Poplar
685+94	Lt.	21.5'	33"	Poplar
676+26	Lt.	28.0'	11"	2 Cherry
TOTAL 14				

STORM SEWERS							
Item No.	Side	Station To Station	Pipe Lin. Ft.	Pipe Under Pav't Lin. Ft.	Catch Basins Each	Man Holes Each	
SS-1	RT	675+00 675+95	12" 15	12"	13X	Special	
SS-2		676+00	G	33	2	1	
SS-3	RT	675+95 678+35	G	237			
SS-4		678+40	G	33	2	1	
SS-5	RT	678+35 680+45	G	207			
SS-6		680+50	G	33	2	1	
SS-7	RT	680+45 682+70	G	222			
SS-8		682+75	G	33	2	1	
SS-9	RT	682+70 684+95	G	222			
SS-10		685+00	G	33	2	1	
SS-11	RT	684+95 686+00	G	104			
TOTALS			578	537	165	10	5

REMOVAL OF EXISTING PAVEMENT				REPLACEMENT	
Station From To	Length Lin. Ft.	Width Lin. Ft.	Sq. Yds.	8 B-71	Sq. Yds.
675+96 676+04	8	20	17.8		17.8
678+36 678+44	8	20	17.8		17.8
680+46 680+54	8	20	17.8		17.8
682+71 682+79	8	20	17.8		17.8
684+96 685+04	8	20	17.8		17.8
TOTAL			89.0		89.0

SEALING (ONLY) EDGES OF EXIST. PAV'T.			
Station To Station	Side	Lin. Ft.	
675+00 686+00	Rt. & Lt.	4400	
5 Crossovers 5(20x2)		200	
TOTAL		4600	

STA 675+00 - STA. 686+00



B.M. No. 22: Spike in North
 root of 26" Maple tree 31'
 left of Sta. 679+99
 Elevation = 665.630

B.M. No. 23: Spike in South
 side of 30" Poplar tree 31'
 left of Sta. 684+92
 Elevation = 668.545

Excavation = 1204 Cu. Yds.
 Embankment = 143 Cu. Yds.

