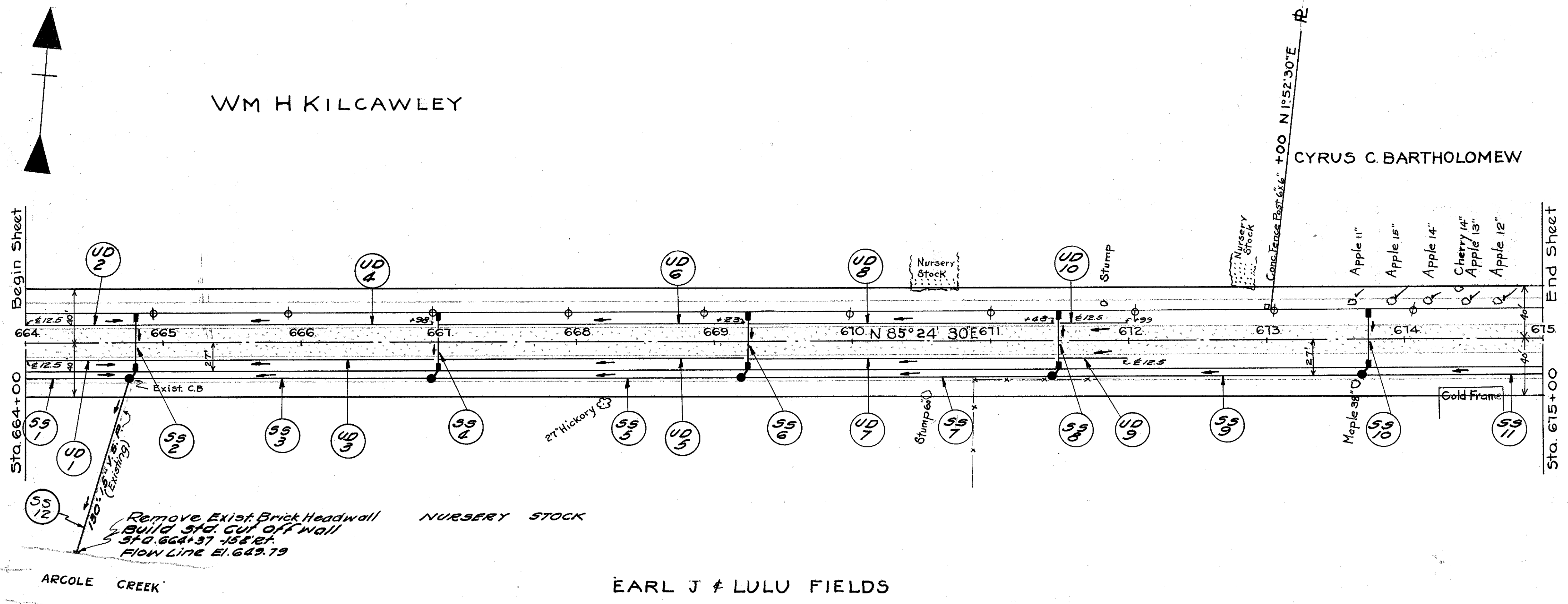


LAKE COUNTY
 S.H. 2 SEC. Q (Pt)

WM H KILCAWLEY

CYRUS C. BARTHOLOMEW



REMOVAL OF TREES AND STUMPS

STATION	SIDE	DIST. FROM C&	SIZE	KIND
673+63	LT.	29.6'	11"	APPLE
673+91	LT.	29.8	15"	APPLE
674+17	LT.	29.7	14"	APPLE
674+44	LT.	29.0	13"	APPLE
674+69	LT.	29.5	12"	APPLE
TOTAL 5 TREES.				

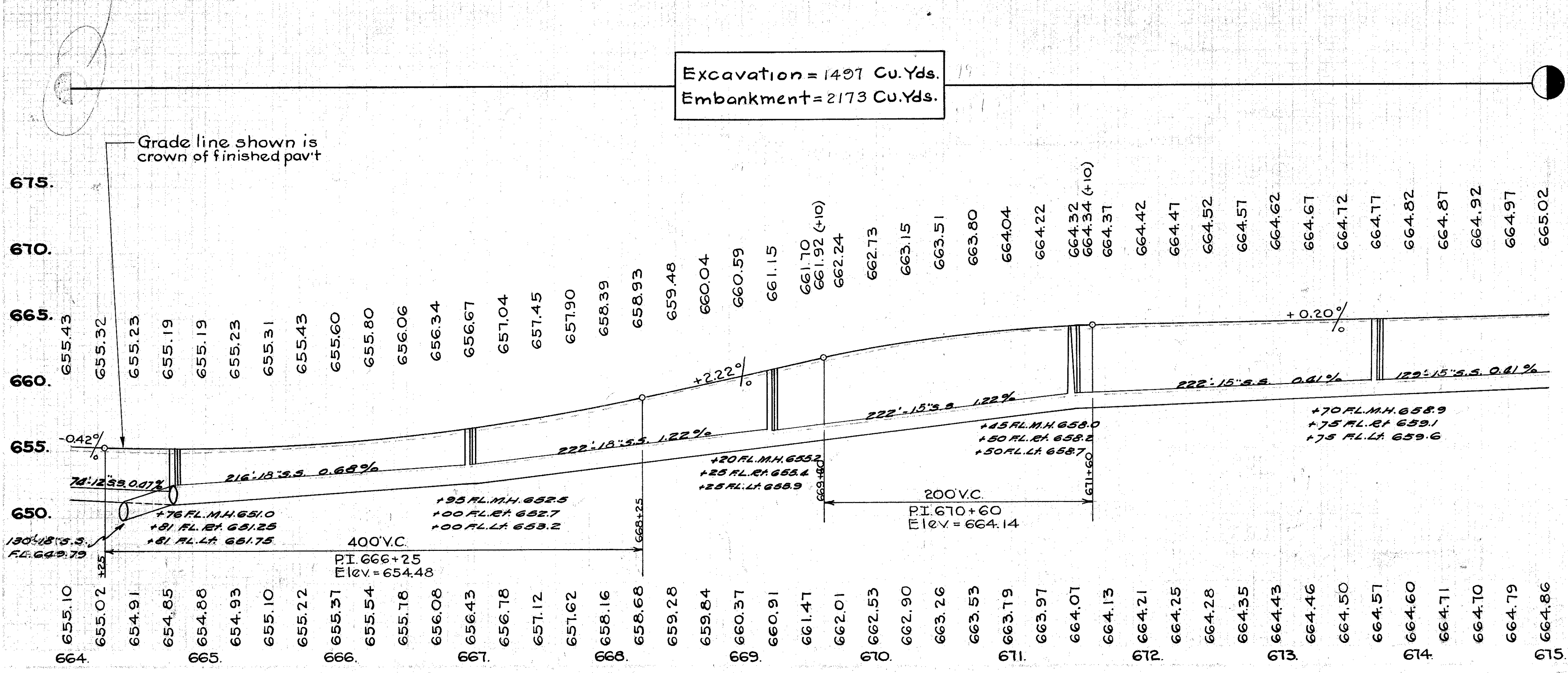
STORM SEWERS

ITEM NO.	SIDE	FROM STATION	TO STATION	PIPE LIN. FT.	PIPE UNDERPAVT. LIN. FT.	PIPE SPECIALS EACH	CLASS CONC.	CATCH BASIN EACH	MANHOLES EACH				
SS-1	RT	664+00	664+76	76									
SS-2		664+81		6		2		2	1				
SS-3	RT	664+76	666+95	216									
SS-4		667+00		6		2		2	1				
SS-5	RT	666+95	669+20	222									
SS-6		669+25		6		2		2	1				
SS-7	RT	669+20	671+45	222									
SS-8		671+50		6		2		2	1				
SS-9	RT	671+45	673+70	222									
SS-10		673+75		6		3		2	1				
SS-11	RT	673+70	675+00	129									
SS-12	RT	664+37	664+77	16	114		0.1	10	4				
TOTALS				16104	579	552	149	6	2	0.1	10	4	1

B.M. No. 20: Spike in North root of 24" Hickory tree 42' right of Sta. 668+18
 Elevation = 657.880

B.M. No. 21: Spike in North root of 36" Maple tree 30.5' right of Sta. 673+67
 Elevation = 666.220

Excavation = 1497 Cu. Yds.
 Embankment = 2173 Cu. Yds.



PIPE REMOVED

STATION	SIDE	DIAMETER	LENGTH
664+37	RT	15"	130
TOTAL			

PIPE UNDERDRAINS FULL DEPTH POROUS BACKFILL

ITEM NO.	SIDE	FROM STATION	TO STATION	6" PERFOR CORR. M.P. LIN. FT.
UD-1	RT	664+00	664+81	80
UD-2	LT	664+00	664+81	80
UD-3	RT	664+81	666+98	216
UD-4	LT	664+81	666+98	216
UD-5	RT	667+00	669+23	222
UD-6	LT	667+00	669+23	222
UD-7	RT	669+25	671+48	222
UD-8	LT	669+25	671+48	222
UD-9	RT	671+50	671+99	48
UD-10	LT	671+50	671+99	48
TOTAL				

REMOVE EXIST. STRUCTURES

STATION	SIDE	DIST. E	STRUCTURE	LUMP
664+37	RT	159	H/Wall	1
664+77	RT	29	C. Basin	1
TOTAL				

REMOVAL OF EXISTING PAVEMENT REPLACEMENT

STATION FROM	STATION TO	LENGTH LIN. FT.	WIDTH LIN. FT.	SQ. YDS.	5" B-71 SQ. YDS.
664+77	664+85	8	20	17.8	17.8
666+96	667+04	8	20	17.8	17.8
669+21	669+29	8	20	17.8	17.8
671+46	671+54	8	20	17.8	17.8
673+71	673+79	8	20	17.8	17.8
TOTAL					

SEALING (ONLY) EDGES OF EXIST. PAVE.

STATION FROM	STATION TO	SIDE	LENGTH LIN. FT.
664+00	675+00	RT & LT	4400
5 CROSSOVERS 5(20x2)			
TOTAL			

STA. 664+00 - STA 675+00