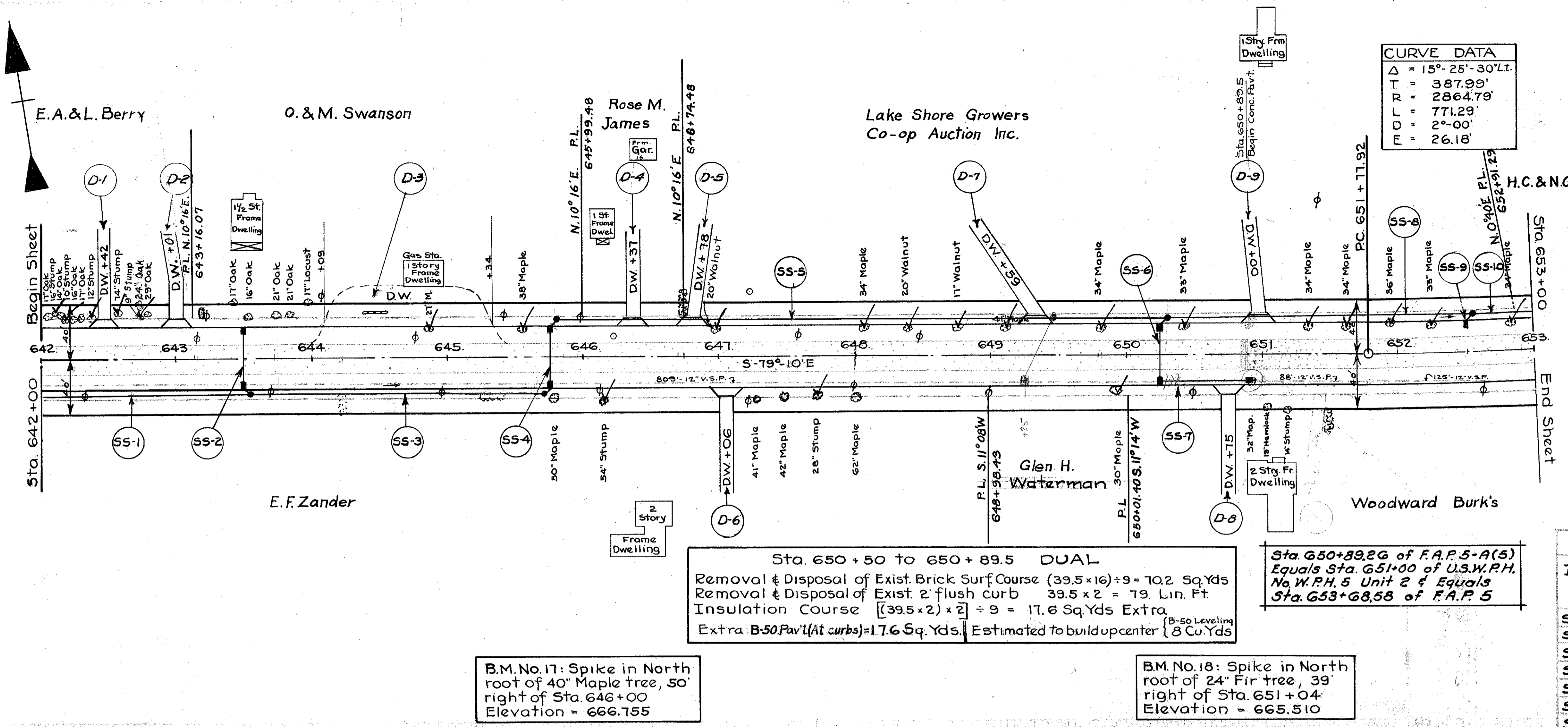


LAKE COUNTY
 S.H. 2 SEC. Q (Pt.)



DRIVES & APPROACHES

| Item | Station | Side | T-70 Sq. Yds | I-17 Cu. Yds | Deduct Curb Lin. Ft. | Deduct Sidewalk | Detail Sheet No. |
|------------|---------|------|--------------|--------------|----------------------|-----------------|------------------|
| D-1 | 642+42 | Lt | 11.9 | 2.0 | 22 | | 37 |
| D-2 | 643+01 | Lt | 11.9 | 2.0 | 22 | | 37 |
| D-3 | 644+71 | Lt | 90.7 | 12.7 | 131 | 123.5 | 3 |
| D-4 | 646+37 | Lt | 11.9 | 2.0 | 22 | | 37 |
| D-5 | 646+78 | Lt | 11.9 | 2.0 | 22 | | 37 |
| D-6 | 647+06 | Rt | 11.9 | 1.1 | 22 | | |
| D-7 | 649+59 | Lt | 11.9 | 4.3 | 22 | | 38 |
| D-8 | 650+75 | Rt | 11.9 | 1.1 | 22 | | |
| TOTAL DUAL | | | 174.0 | 27.2 | 285 | 123.5 | |
| D-9 | 651+00 | Lt | 11.9 | 2.0 | 22 | | 37 |
| TOTAL T-71 | | | 11.9 | 2.0 | 22 | | |

SIDEWALK (LEFT)

| Station | To Station | Lin. Ft. | Deductions | Net Length | Width | Sq. Ft. |
|---------------|------------|----------|---|------------|-------|---------|
| DUAL 642+00 | 650+89.5 | 889.5 | 5 Drs @ 14.5 = 72.5 1 Dr @ 123.5 = 196 | 693.5 | 4.5 | 3120.8 |
| T-71 650+89.5 | 653+00 | 210.5 | 1 Dr @ 14.5 = 14.5 | 196 | 4.5 | 882 |

Sta. 650+50 to 650+89.5 DUAL
 Removal & Disposal of Exist. Brick Surf Course (39.5 x 16) ÷ 9 = 70.2 Sq. Yds
 Removal & Disposal of Exist. 2' flush curb 39.5 x 2 = 79 Lin. Ft.
 Insulation Course [(39.5 x 2) x 2] ÷ 9 = 17.6 Sq. Yds Extra
 Extra B-50 Pav't (At curbs) = 17.6 Sq. Yds. Estimated to build up center 8 Cu. Yds

Sta. 650+89.5 to 651+00 of F.A.P. 5-A(5)
 Equals Sta. 651+00 of U.S.W.P.H.
 No W.P.H. 5 Unit 2 & Equals
 Sta. 653+08.5 of F.A.P. 5

B.M. No. 17: Spike in North root of 40" Maple tree, 50' right of Sta. 646+00
 Elevation = 666.755

B.M. No. 18: Spike in North root of 24" Fir tree, 39' right of Sta. 651+04
 Elevation = 665.510

Excavation = 479 Cu. Yds
 Embankment = 475 Cu. Yds

STORM SEWER

| Item No. | Side | Station | To Station | Pipe Lin. Ft. | Pipe Under Pav't | Catch Basins Each | Manholes Each |
|------------|----------|----------|------------|---------------|------------------|-------------------|---------------|
| SS-1 | Rt | 642+00 | 643+55 | 153 | | | |
| SS-2 | Lt to Rt | 643+50 | | 6 | 33 | 2 | 1 |
| SS-3 | Rt | 643+55 | 645+70 | 212 | | | |
| SS-4 | Rt to Lt | 645+75 | | 12 | 33 | 2 | 1 |
| SS-5 | Lt | 645+80 | 650+30 | 446 | | | |
| SS-6 | Rt to Lt | 650+25 | | 6 | 33 | 1 | 1 |
| SS-7 | Rt | 650+25 | 650+89.5 | 64 | | | |
| SS-8 | Lt | 650+30 | 650+89.5 | 58 | | | |
| TOTAL DUAL | | | | 389 | 504 | 164 | 5 |
| SS-8 | Lt | 650+89.5 | 652+55 | 163 | | | |
| SS-10 | Lt | 652+55 | 653+00 | 43 | | | |
| TOTAL T-71 | | | | 6 | 163 | 43 | 1 |

REMOVAL OF TREES AND STUMPS

| Station | Side | Dist from E | Size | Kind |
|------------------|------|-------------|------|-----------|
| 644+86 | Lt | 21 | 27 | Maple |
| 645+56 | Lt | 20 | 38 | Maple |
| 646+16 | Rt | 31 | 54 | Stump |
| 646+99 | Lt | 20 | 20 | Walnut |
| 647+72 | Rt | 30 | 28 | Stump |
| 648+05 | Lt | 195 | 34 | Maple |
| 648+39 | Lt | 20 | 20 | Walnut |
| 648+78 | Lt | 205 | 17 | Walnut |
| 649+10 | Lt | 195 | 41 | Maple |
| 649+81 | Lt | 20 | 34 | Maple |
| 650+42 | Lt | 20 | 33 | Maple |
| 651+33 | Lt | 20 | 34 | Maple |
| 651+62 | Lt | 20 | 34 | Maple |
| 651+94 | Lt | 20 | 36 | Maple |
| 652+25 | Lt | 195 | 33 | Maple |
| 652+85 | Lt | 185 | 34 | Maple |
| 652+00 to 653+00 | Lt | 29' to 34' | Var. | 55 Stumps |
| 649+96 | Lt | 22.2 | 30 | Maple |
| TOTAL DUAL | | | | 17 |
| TOTAL T-71 | | | | 5 |

REMOVAL OF EXISTING PAVEMENT

| Station | From | To | Length | Width | Sq. Yds |
|------------|--------|--------|--------|-------|---------|
| 643+46 | 643+46 | 643+54 | 8 | 20 | 17.8 |
| 645+71 | 645+71 | 645+79 | 8 | 20 | 17.8 |
| 650+21 | 650+21 | 650+29 | 8 | 20 | 17.8 |
| TOTAL DUAL | | | | | 53.4 |

REPLACEMENT OF PAVEMENT

| Station | From | To | Length | Width | Sq. Yds |
|------------|--------|--------|--------|-------|---------|
| 643+46 | 643+46 | 643+54 | 8 | 20 | 17.8 |
| 645+71 | 645+71 | 645+79 | 8 | 20 | 17.8 |
| 650+21 | 650+21 | 650+29 | 8 | 20 | 17.8 |
| TOTAL DUAL | | | | | 53.4 |

REMOVE EXISTING STRUCTURE

| Station | Side | Dist. From E | Object | Lump |
|------------------|------|--------------|--------|------|
| 642+00 to 643+00 | Lt | 18.2' | Brick | 1 |
| 649+96 | Lt | | Brick | 1 |
| TOTAL T-71 | | | | 1 |

SEALING (ONLY) EDGES OF EXIST. PAV'T

| Station | To Station | Side | Lin. Ft. |
|--------------|------------|---------|----------|
| 642+00 | 650+89.5 | Lt & Rt | 3558 |
| 3 Crossovers | 3(20x2) | | 120 |
| TOTAL DUAL | | | 3678 |
| 650+89.5 | 653+00 | Lt & Rt | 421 |
| TOTAL T-71 | | | 421 |

PIPE REMOVED

| Station | To Station | Side | Lin. Ft. |
|------------|------------|------|----------|
| 642+00 | 650+89.5 | Rt | 889 |
| TOTAL DUAL | | | 889 |
| 651+78 | 653+00 | Rt | 122 |
| 650+89.5 | 651+76 | Rt | 87 |
| TOTAL T-71 | | | 209 |

