

LAKE COUNTY  
 SH. 2 SEC. Q (Pt)

**DRIVES & APPROACHES**

Item	Station	Side	T-70 Sq. Yds.	I-17 Cu. Yds.	Deduct Curb Lin. Ft.	Detail Sheet No.
D-1	622 + 08	Rt	11.9	1.1	22	
D-2	623 + 05	Lt	11.9	4.3	22	37
D-3	624 + 50	Lt	11.9	4.3	22	38
D-4	627 + 90	Rt	11.9	1.1	22	
D-5	627 + 91	Lt	11.9	1.1	22	
Totals			59.5	11.9	110.	

**SIDEWALK (LEFT)**

Station	To Station	Lin Ft.	Deduction Length	Width	Sq. Ft.
620 + 00	631 + 00	1100	3Dr @ 14.5 = 43.5	10.56.5	4.5 4754.25

**STORM SEWERS**

Item No	Side	Station	To Station	Pipe Lin. Ft.			Pipe Under Pav. Lin. Ft.	Catch Basins Each	Manholes Each
				12"	15"	18"			
SS-1	Rt	620+00	621+45	143					
SS-2	Lt to Rt	621+40		6			33	2	1
SS-3	Rt	621+45	623+85	237					
SS-4	Lt to Rt	623+80		6			33	2	1
SS-5	Rt	623+85	626+25		237				
SS-6	Lt to Rt	626+20		6			33	2	1
SS-7	Rt	626+25	628+65		237				
SS-8	Lt to Rt	628+60		6			33	2	1
SS-9	Rt	628+65	631+00			231			
SS-10	Lt to Rt	630+90		6			33	2	1
Totals				410	474	231	165	10	5

**REMOVAL OF EXISTING PAV'T REPLACEMENT**

Station	To	Length	Width	Sq Yds	8" B-71 Sq Yds
621+36	621+44	8	20	17.8	17.8
623+76	623+84	8	20	17.8	17.8
626+16	626+24	8	20	17.8	17.8
628+56	628+64	8	20	17.8	17.8
630+86	630+94	8	20	17.8	17.8
Totals				80.0	80.0

**REMOVAL OF TREES AND STUMPS**

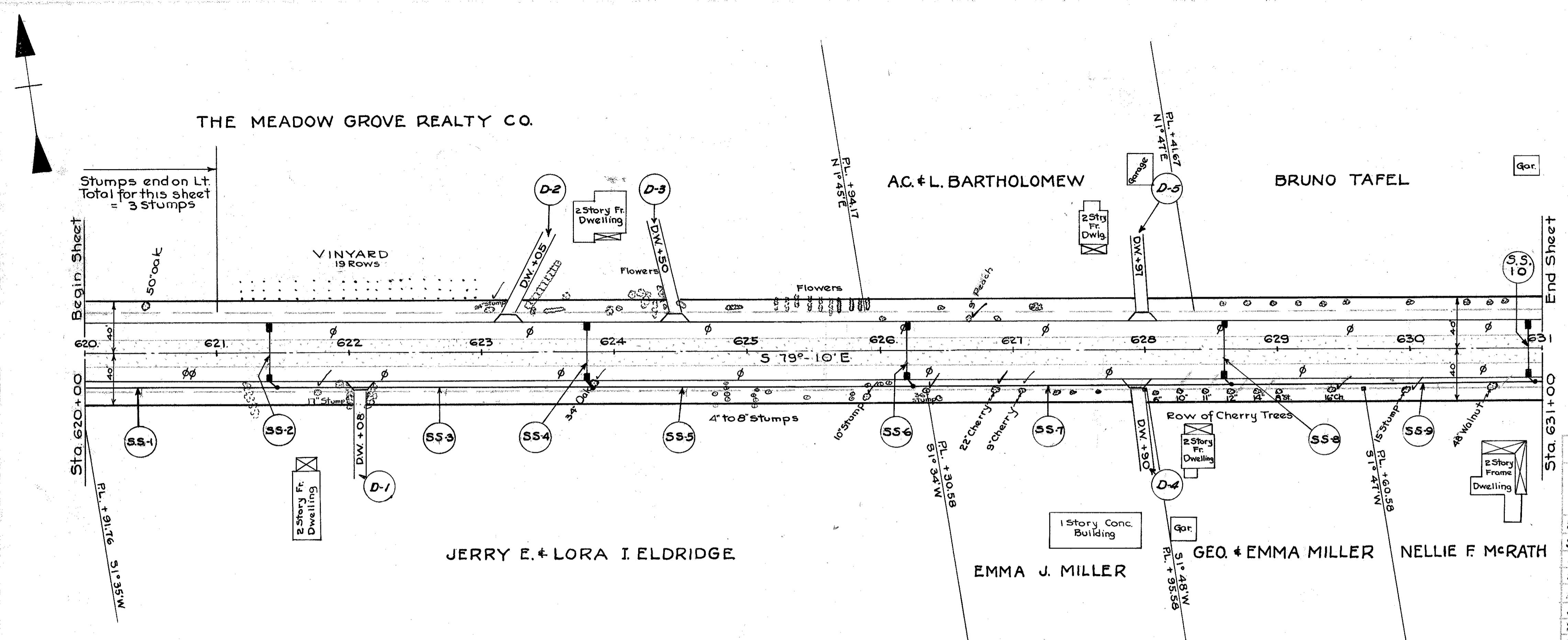
Station	Side	Dist from c	Size	Kind
620 to 621	Lt.	Variable	9" to 15"	3 Stumps
621 + 77	Rt.	32'	17"	Stump
623 + 07	Lt.	30'	24"	Stump
623 + 83	Rt.	24'	34"	Oak
625 + 91	Rt.	35'	10"	Stump
626 + 35	Rt.	31'	36"	Stump
626 + 67	Lt.	24.5'	9"	Peach
626 + 87	Rt.	31'	22"	Cherry
627 + 07	Rt.	31'	9"	Cherry
629 + 99	Rt.	32'	15"	Stump
629 + 41	Rt.	31'	16"	Cherry

Total = 13 Indicated thus

**SEALING (ONLY) EDGES OF EXIST. PAV'T**

Station	To Station	Side	Lin. Ft.
620 + 00	631 + 00	Lt. & Rt	4400
5 Crossovers 5 x (20x2)			200
			4600

STA. 620+00 - STA 631+00



B.M. No. 13: Spike in South root of 50' Oak, 33' left of Sta. 620 + 45.5  
 Elevation = 671.135

B.M. No. 14: Spike in North root of 34' Oak, 24' to right of Sta. 623 + 82.5  
 Elevation = 670.450

Exc. 940 Cu. Yds.  
 Emb. 751 Cu. Yds.

