

LAKE COUNTY
S.H. 2 SEC. Q(Pt)

ELSIE A. HILLIER

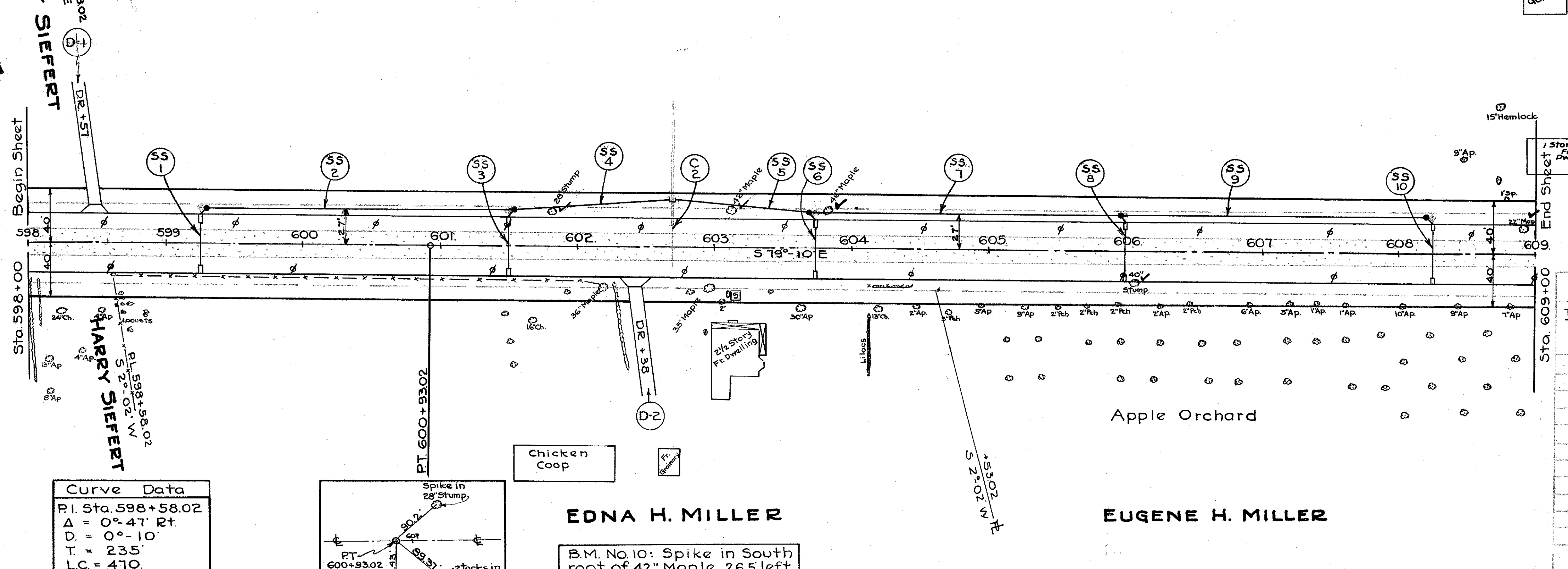
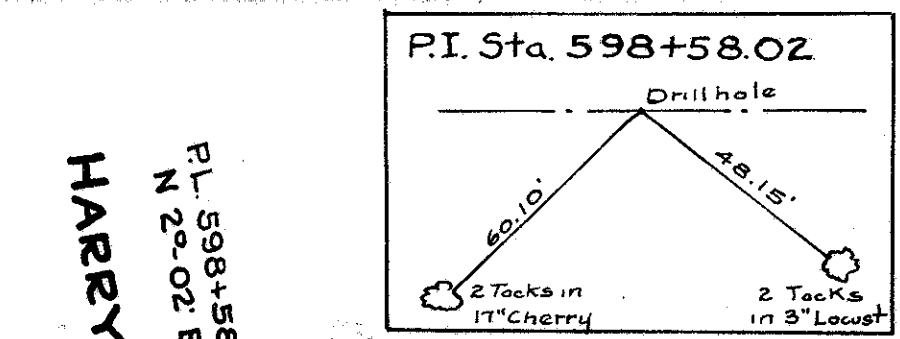
DRIVES & APPROACHES

Item	Station	Side	T-70 Sq.Yds	I-17 Cu.Yds	Deduct Curb Lin.Ft	Detailed on Sheet
D-1	598 + 57	Lt.	11.9	4.3	22	37
D-2	602 + 38	Rt.	11.9	1.1	22	
Totals			23.8	5.4	44	

SIDEWALK (LEFT)

Station	To Station	Lin. Ft.	Deductions	Length	Width	Sq. Ft.
598 + 00	609 + 00	1100	1Dr @ 14.5' = 14.5'	1085.5	4.5	4884.75

Garage

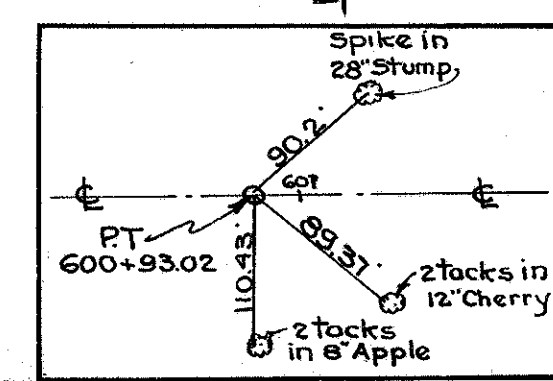


STORM SEWERS

Item No.	Side	Station	To Station	Pipe Lin. Ft.	Pipe Under Pav't (Lin. Ft.)	Catch Basins Each	Manholes Each
SS-1	Rt to Lt	599+25		12"	12"	13X	Special
SS-2	Lt.	599+30	601 + 55	222	33	2	1
SS-3	Rt to Lt	601 + 50		6	33	2	1
SS-4	Lt.	601 + 55	602 + 68	112			
SS-5	Lt.	602 + 70	603 + 70	99			
SS-6	Rt to Lt	603 + 15		6	33	2	1
SS-7	Lt.	603 + 70	605 + 95	222			
SS-8	Rt to Lt	606 + 00		6	33	2	1
SS-9	Lt.	605 + 95	608 + 20	222			
SS-10	Rt to Lt	608 + 25		6	33	2	1
Totals				907	165	10	5

Curve Data

PI. Sta. 598+58.02
 $\Delta = 0^\circ 47' Rt.$
 $D = 0^\circ - 10'$
 $T = 235'$
 $LC = 410'$
 $R = 34377.48$



B.M. No. 10: Spike in South root of 42" Maple 26.5 left of Sta. 603 + 12.5
Elevation = 673.350

REMOVAL OF EXISTING PAV'T.				REPLACEMENT	
Station From	Station To	Length	Width	Sq.Yds	8" B-71 Sq. Yds.
599+21	599+29	8	20	17.8	17.8
601+46	601+54	8	20	17.8	17.8
603+71	603+79	8	20	17.8	17.8
605+96	606+04	8	20	17.8	17.8
608+21	608+29	8	20	17.8	17.8
Total				89.0	89.0

REMOVAL OF TREES AND STUMPS

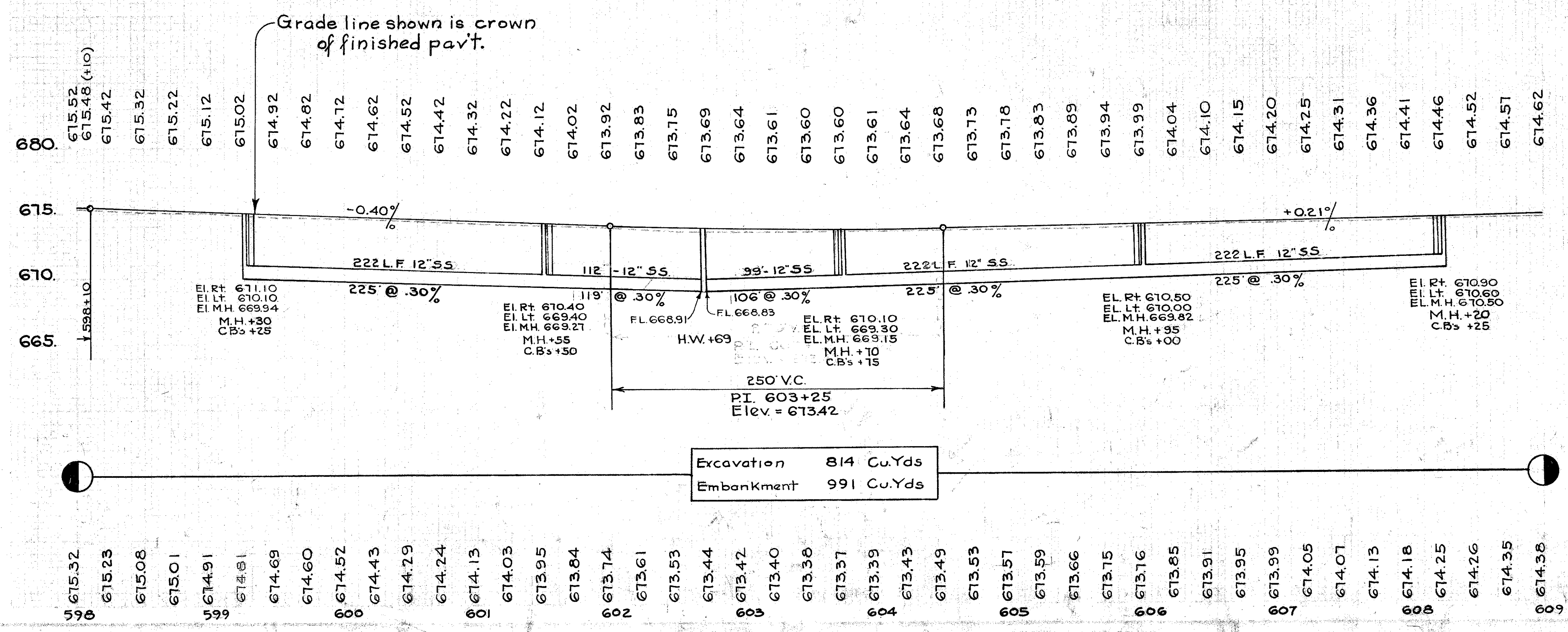
Station	Side	Dist from ϕ	Size	Kind
601+81	Lt.	23	28"	Stump
603+12	Lt.	26	42"	Maple
603+82	Lt.	24	46"	Maple
606+04	Rt.	20.5	40"	Stump
608+91	Lt.	16	22"	Maple
Total = 5 Indicated thus				

SEALING (ONLY) EDGES OF EXIST. PAV'T.

Station	To Station	Side	Lin. Ft.
598 + 00	609 + 00	Lt. & Rt.	4400
5 CROSSOVERS		5(20x2)	200
Total			4600

STRUCTURES 20' SPAN & UNDER

C-2 Sta. 602+69 Size 12"x30.5' Abandon See sheet 40.



Excavation 814 Cu.Yds
Embankment 991 Cu.Yds