

LAKE COUNTY  
S.H.2 SEC. Q (Pt)

Curve Data  
P.I. Sta. 598+58.02  
Δ = 0° 47' Rt.  
D = 0° - 10'  
T = 235'  
LC = 470'  
R = 34377.48

Sta. 590+73 Left  
Connect Housewalk to SW.  
.7 x 2.25 = 1.6 sq.ft.

DRIVES & APPROACHES

Item	Station	Side	T-10 Sq Yds	I-17 Cu. Yds	Deduct Curb Lin. Ft.	Detailed on Sheet
D-1	587+40	Rt.	11.9	2.0	22	37
D-2	588+29	Rt.	11.9	2.0	22	37
D-3	591+39	Lt.	11.9	1.1	22	
D-4	592+25	Rt.	11.9	1.1	22	
D-5	592+43	Lt.	11.9	1.1	22	
D-6	592+67	Rt.	11.9	1.1	22	
D-7	595+21	Lt.	11.9	1.1	22	
D-8	595+75	Lt.	11.9	2.0	22	37
D-9	596+58	Rt.	11.9	4.3	22	37
D-10	597+10	Rt.	11.9	2.0	22	37
Totals			119.0	17.8	220.	

SIDEWALK (LEFT)

Station	To Station	Lin. Ft.	Deduction	Length	Width	Sq. Ft.
587+00	598+00	1100	4DRs @ 14.5' = 58'	1042	4.5	4689.
+ 16 Sq. Ft. (Walk to House Lt. 590+73) = 4690.6						

STORM SEWERS

Item No.	Side	Station	To Station	Pipe Lin. Ft.	Pipe Under Pav't (Lin. Ft.)	Catch Basins Each	Manholes Each
SS-1	Lt.	587+00	589+05	203	12"	13X	Special
SS-2	Rt to Lt	589+10		6	12"		1
SS-3	Lt.	589+05	591+55	247	12"		
SS-4	Rt to Lt	591+60		6	12"		1
SS-5	Lt.	591+55	594+05	247	12"		
SS-6	Rt to Lt	594+10		6	12"		1
Totals				715	99	6	3

REMOVAL OF TREES AND STUMPS

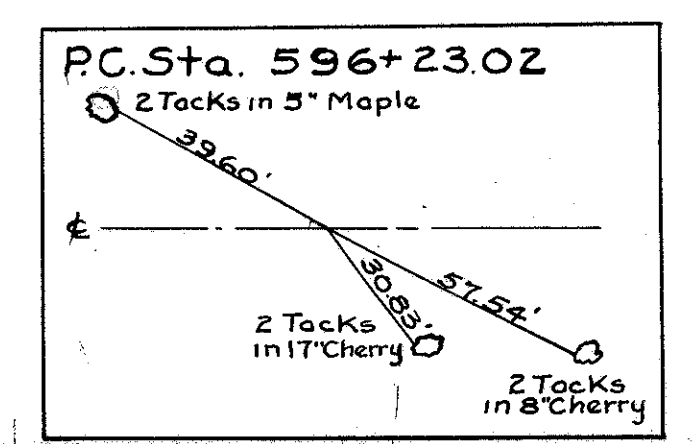
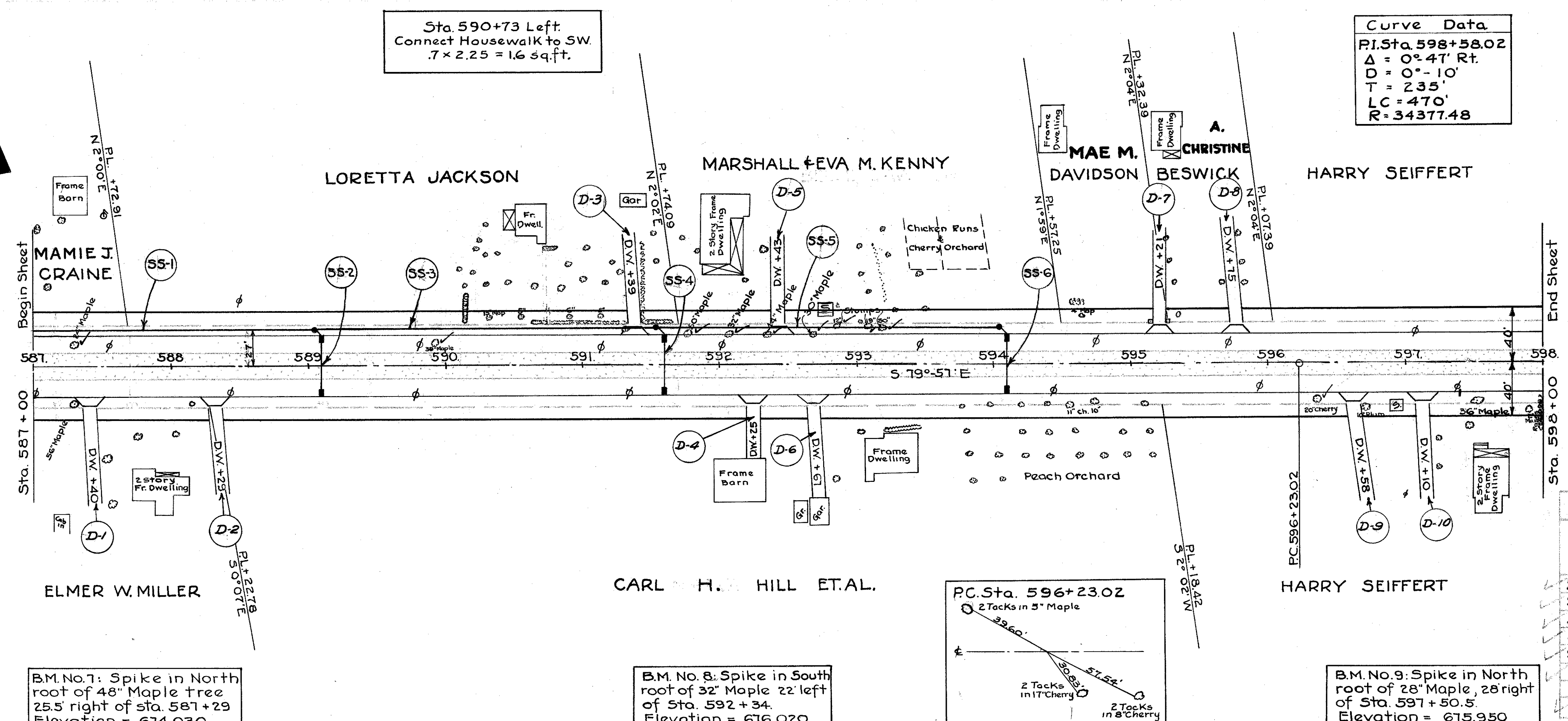
Station	Side	Dist. from c	Size	Kind
587+30	Lt.	16'	24"	Maple
589+92	Lt.	16.3	39"	Maple
591+75	Lt.	22'	50"	Maple
592+07	Lt.	21'	32"	Maple
592+35	Lt.	21.5	44"	Maple
592+67	Lt.	22.8	30"	Maple
592+84	Lt.	28	12"	Stump
593+06	Lt.	28	19"	Stump
593+18	Lt.	27	30"	Stump
596+37	Rt.	26.5	20"	Cherry
Total = 10. Indicated thus (C)				

REMOVAL OF EXISTING PAV'T REPLACEMENT

Station	Length	Width	Sq. Yds	8" B-71 Sq. Yds
From To				
589+06 589+14	8	20	17.8	17.8
591+56 591+64	8	20	17.8	17.8
594+06 594+14	8	20	17.8	17.8
Totals			534	534

SEALING (ONLY) EDGES OF EXIST. PAV'T

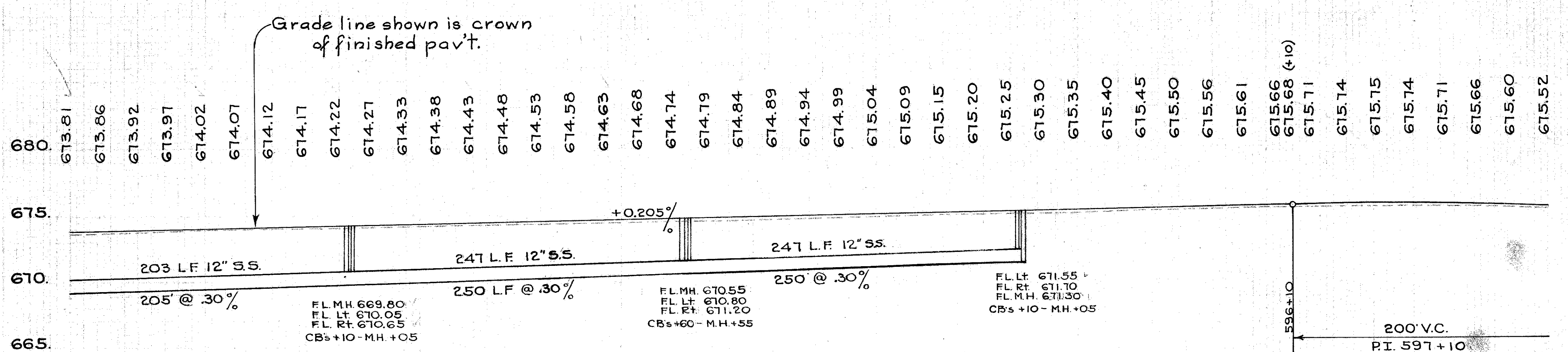
Station	To Station	Side	Lin. Ft.
587+00	598+00	Lt & Rt	4400
3 CROSSOVERS 3(20x2)			120
Total			4520



B.M. No. 7: Spike in North  
root of 48" Maple tree  
25.5' right of Sta. 587+29  
Elevation = 674.030

B.M. No. 8: Spike in South  
root of 32" Maple 22' left  
of Sta. 592+34.  
Elevation = 676.020

B.M. No. 9: Spike in North  
root of 28" Maple, 28' right  
of Sta. 597+50.5.  
Elevation = 675.950



Excavation 718 Cu. Yds  
Embankment 766 Cu. Yds

