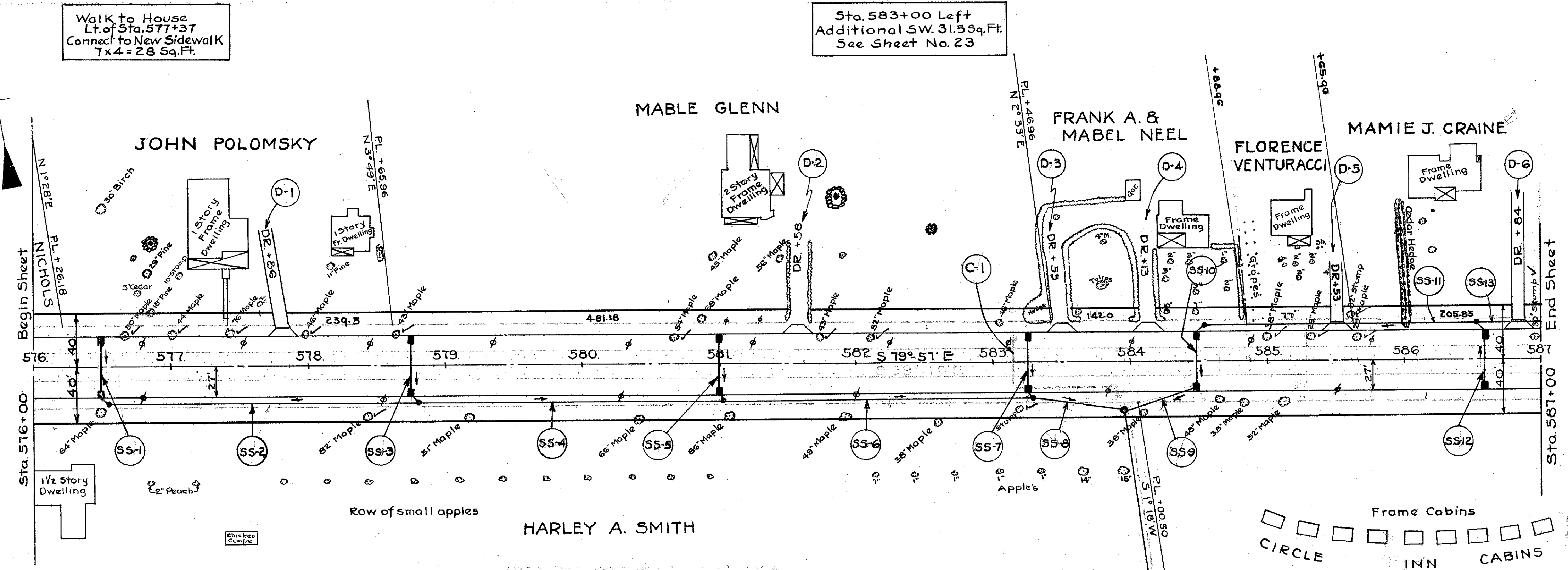


LAKE COUNTY
S.H. 2 SEC. Q (Pt)



DRIVES & APPROACHES					
Item	Station	Side	T-10 Sq. Yds	I-17 Cu. Yds	Deduct Curb Lin. Ft.
D-1	577 + 86	Lt.	11.9	1.1	22
D-2	581 + 58	Lt.	11.9	1.1	22
D-3	583 + 55	Lt.	11.9	1.1	22
D-4	584 + 13	Lt.	11.9	1.1	22
D-5	585 + 53	Lt.	11.9	1.1	22
D-6	586 + 84	Lt.	11.9	1.1	22
Totals			71.4	6.6	132

SIDEWALK (LEFT)					
Station To Station	Lin. Ft	Deduction	Length	Width	Sq. Ft.
576 + 00 587 + 00	1100	60rs @ 14.5' = 87	1013	4.5	4558.5
Additional 577+37 Lt. 28 Sq. Ft. + 583+00 Lt. 31.5 Sq. Ft.					59.5
Total					4618.0

STORM SEWER									
Item	Side	Station To Station	Pipe Lin. Ft.	Outlet Pipe L.F. Pav't.	Pipe Under (ft.)	Catch Basins Each	Manholes Each	Concrete Class "C" Cu. Yd.	
SS-1	Lt to Rt	576 + 50	6	12" 15" 15"	33	2			
SS-2	Rt	576 + 55 578 + 80	222						
SS-3	Lt to Rt	578 + 75	6		33	2			
SS-4	Rt	578 + 80 581 + 05	222						
SS-5	Lt to Rt	581 + 00	6		33	2			
SS-6	Rt	581 + 05 583 + 30	222						
SS-7	Lt to Rt	583 + 25	6		33	2			
SS-8	Rt	583 + 30 583 + 96	63						
SS-9	Rt	583 + 96 584 + 50	47		5				
SS-10	Lt to Rt	584 + 50	6		33	2			
SS-11	Lt	584 + 55 586 + 55	197						
SS-12	Rt to Lt	586 + 60	6		33	2			
SS-13	Lt	586 + 55 587 + 00	44						
SS-14	Rt	583 + 90 667' South	649 16		203	12	1	1	0.1
Total			1053	649 16					7 0.1

B.M. No. 5: Spike in North root of 82' Maple tree 34.5 right of Sta. 578+42. Elevation = 674.295

Sta. 580+85 to Sta. 581+21 Remove pres. 2'x9" conc. curb on left 2'x9" Con. Curb Removed & disposed of - 36 lin. ft. Extra B-50 - 8 sq. yd. Extra 1/4" Insulation Course - 8 sq. yd.

B.M. No. 6: Spike in South East root of 40' maple 26' left of sta. 583+04. Elevation = 673.990

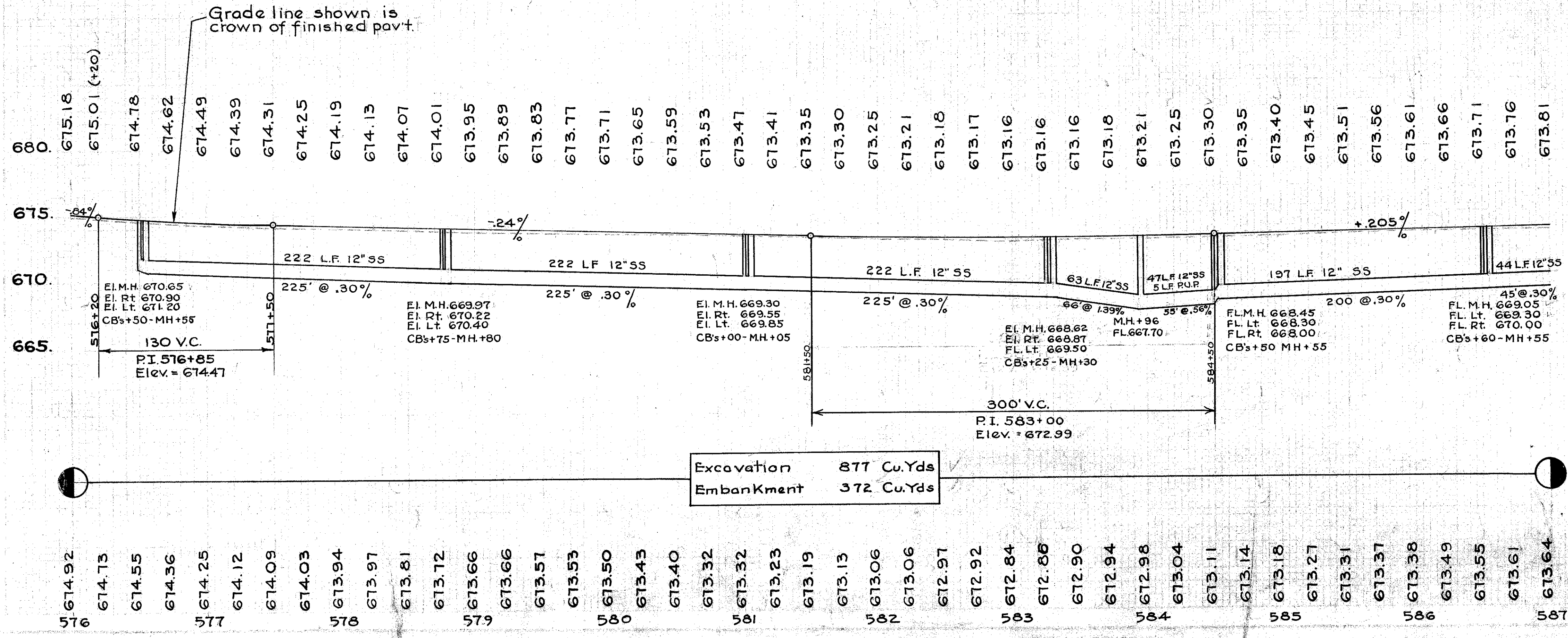
REMOVAL OF TREES AND STUMPS				
Station	Side	Dist from &	Size	Kind
576+66	Lt.	20'	50"	Maple
577+00	Lt.	20'	44"	Maple
577+42	Lt.	21.5'	76"	Maple
577+97	Lt.	19'	46"	Maple
578+42	Rt.	35'	82"	Maple
578+63	Lt.	19'	43"	Maple
580+65	Lt.	17'	54"	Maple
581+74	Lt.	16'	43"	Maple
582+11	Lt.	15.5'	52"	Maple
583+16	Rt.	32'	20"	Stump
584+99	Lt.	14'	38"	Maple
585+32	Lt.	14'	29"	Maple
585+62	Lt.	32'	32"	Stump
585+65	Lt.	15'	29"	Maple
586+96	Lt.	15'	30"	Stump
Total = 15 Indicated thus (C) ✓				

REMOVAL OF EXISTING PAV'T. REPLACEMENT				
Station From To	Length Lin. ft.	Width Lin. ft.	Sq. Yds	8" B-7I Sq. Yds
576+46 576+54	8	20	17.8	17.8
578+71 578+79	8	20	17.8	17.8
580+96 581+04	8	20	17.8	17.8
583+21 583+29	8	20	17.8	17.8
584+46 584+54	8	20	17.8	17.8
586+56 586+64	8	20	17.8	17.8
Total			106.8	106.8

SEALING (ONLY) EDGES OF EXIST. PAVT			
Station To Station	Side	Lin. Ft.	
576+00 587+00	Lt & Rt	4400	
6 CROSSOVERS		6(20x2)	240
Total		4640	

PIPE REMOVED			
Station From To	Side	Lin. Ft.	
583+18 583+85	Rt	67	
583+85 702' South	Rt.	684	
Total		751	

STRUCTURES 20' SPAN & UNDER
C-1 Sta. 583+16.5 Size 12"x36 Abandon See sheet 40



Excavation 877 Cu. Yds
Embankment 372 Cu. Yds