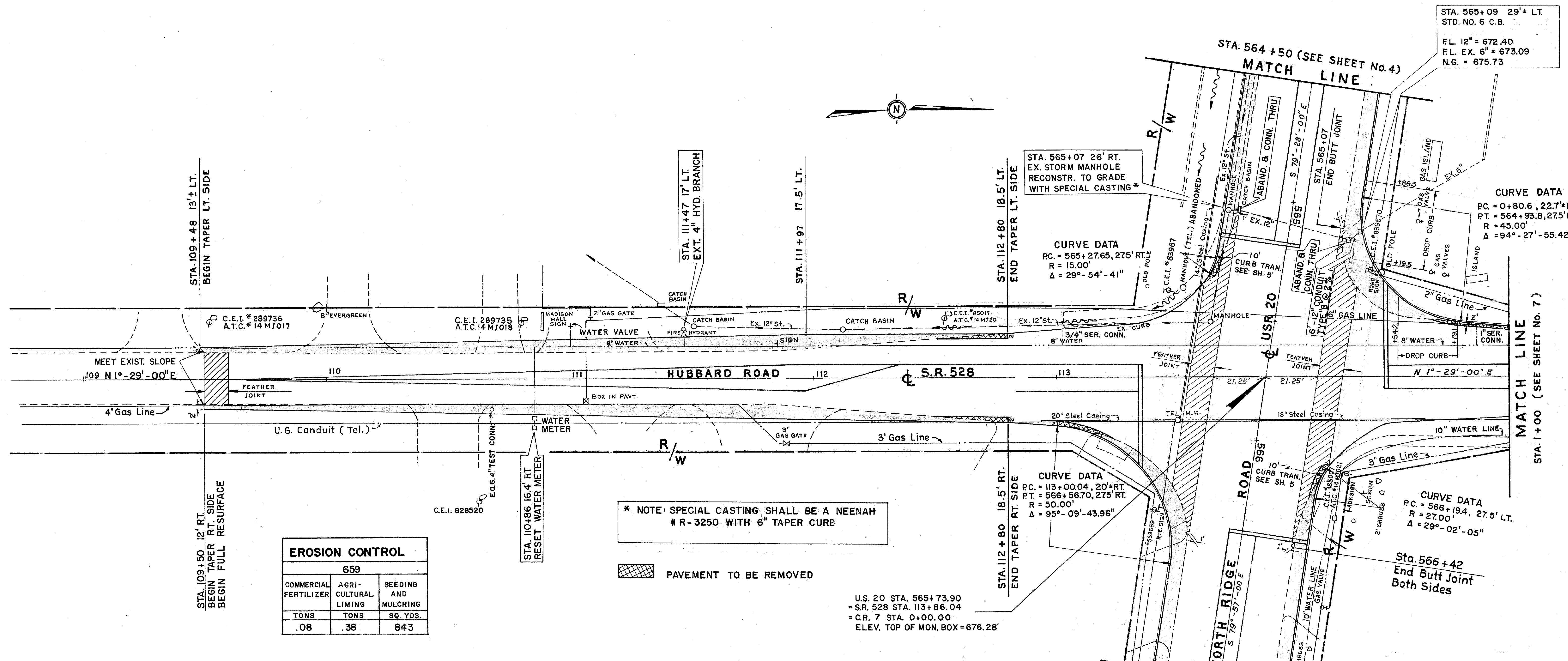


LAKE COUNTY  
LAK - 20-27.92



STA. 565+07 26' RT.  
EX. STORM MANHOLE  
RECONSTR. TO GRADE  
WITH SPECIAL CASTING\*

CURVE DATA  
P.C. = 565+27.65, 275' RT.  
R = 15.00'  
Δ = 29°-54'-41"

CURVE DATA  
P.C. = 113+00.04, 20' RT.  
P.T. = 566+56.70, 275' RT.  
R = 50.00'  
Δ = 95°-09'-43.96"

STA. 565+09 29'± LT.  
STD. NO. 6 C.B.  
FL. 12" = 672.40  
FL. EX. 6" = 673.09  
N.G. = 675.73

CURVE DATA  
P.C. = 0+80.6, 22.7' RT.  
P.T. = 564+93.8, 275' LT.  
R = 45.00'  
Δ = 94°-27'-55.42"

CURVE DATA  
P.C. = 566+19.4, 27.5' LT.  
R = 27.00'  
Δ = 29°-02'-05"

\* NOTE: SPECIAL CASTING SHALL BE A NEENAH # R-3250 WITH 6" TAPER CURB

PAVEMENT TO BE REMOVED

U.S. 20 STA. 565+73.90  
= S.R. 528 STA. 113+86.04  
= C.R. 7 STA. 0+00.00  
ELEV. TOP OF MON. BOX = 676.28'

EROSION CONTROL		
659		
COMMERCIAL FERTILIZER	AGRI-CULTURAL LIMING	SEEDING AND MULCHING
TONS	TONS	SQ. YDS.
.08	.38	843

STATION		301	310	403	403	404	408	609	407
FROM	TO	BITUMINOUS AGGREGATE BASE	SUBBASE GRADING "B"	ASPHALT CONCRETE	ASPHALT CONCRETE SPOTLEVELING COURSE	ASPHALT CONCRETE	PRIME COAT	STANDARD TYPE "6" CURB	TACK COAT
		CUBIC YARDS				GALS.	LIN. FT.		
109+48	112+80	65	64	17	12	32	134		76
112+80	113+46	4	3	1	5	9	8	32	33
564+50	567+00	R 19	11	6	3	8	42	161	19
564+50	567+00	L 23	13	7	2	9	48	169	18
0+40	1+00	5	3	2	4	9	10	64	32
<b>TOTALS</b>		116	94	33		67	242	426	178

STATION		202				203	
FROM	TO	CURB REMOVED	PAVEMENT REMOVED	SIDEWALK REMOVED	WEARING COURSE REMOVED	EXCAVATION NOT INCLUDING EMBANKMENT	EMBANKMENT
		LIN. FT.	SQ. YD.	SQ. FT.	SQ. YD.	CU. YD.	CU. YD.
109+48	112+80		7		96		
112+80	113+46	49	2	336	5		
564+50	567+00	R 194	2	860	138		
564+50	567+00	L 206	2	851	123		
0+40	1+00	38	6	310	6		
<b>TOTALS</b>		487	19	2357	368	416	7

STATION		202	603	604		
FROM	TO	CATCH BASIN ABANDONED	12" CONDUIT TYPE "B"	STANDARD N° 6 CATCH BASIN	MANHOLE ADJUSTED TO GRADE	M.H. RECONSTRUCTED TO GRADE WITH SPEC. CASTING
		EACH	LIN. FT.	EACH		
565+07	R	1				
565+11	L	1				
565+09	L			1		
565+09	565+11		6			
113+64	L				1	
<b>TOTALS</b>		2	6	1	1	1