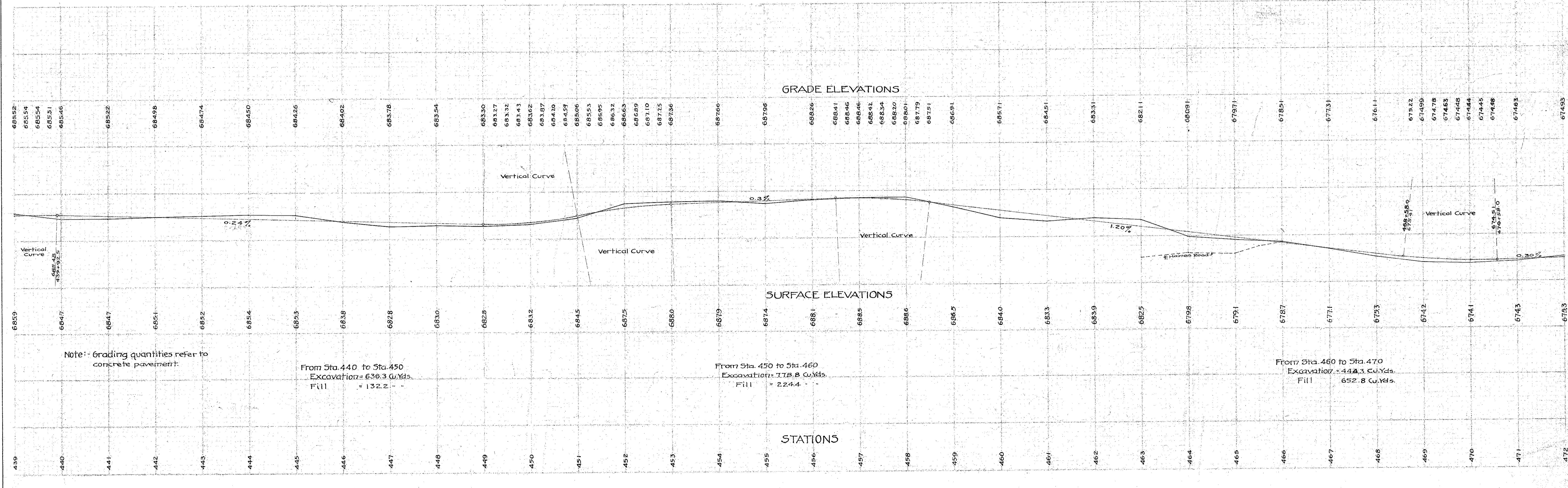
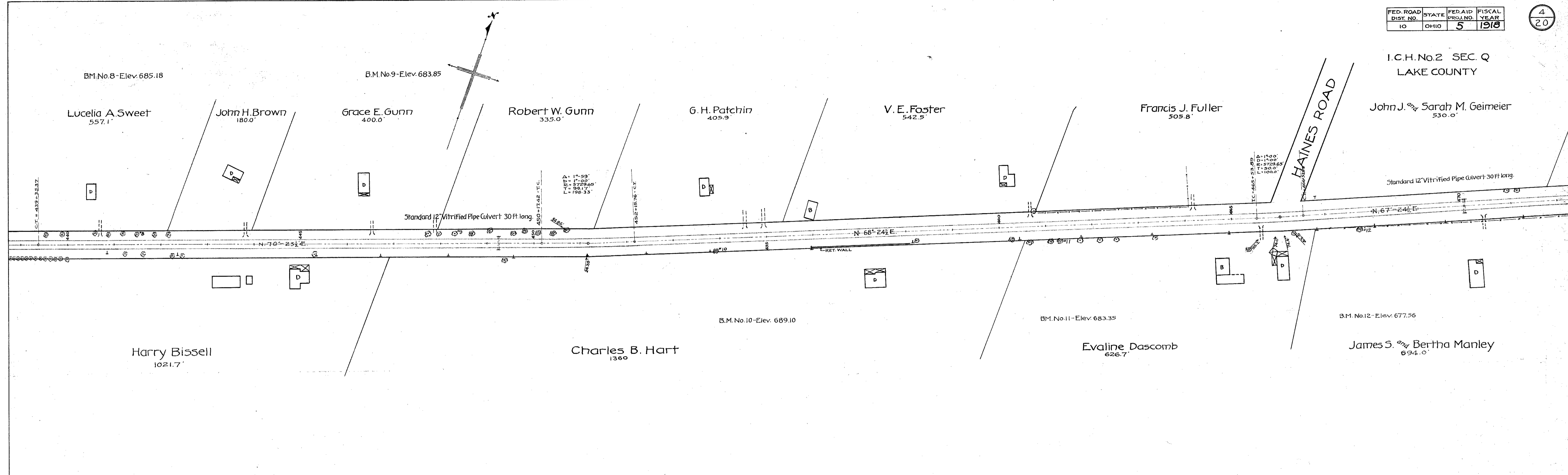


I.C.H. No. 2 SEC. Q
LAKE COUNTY

John J. Geimeier Sarah M. Geimeier
530.0'



Note: Grading quantities refer to concrete pavement.

From Sta. 440 to Sta. 450
Excavation = 636.3 Cu.Yds.
Fill = 132.2

From Sta. 450 to Sta. 460
Excavation = 778.8 Cu.Yds.
Fill = 224.4

From Sta. 460 to Sta. 470
Excavation = 444.3 Cu.Yds.
Fill = 652.8 Cu.Yds.