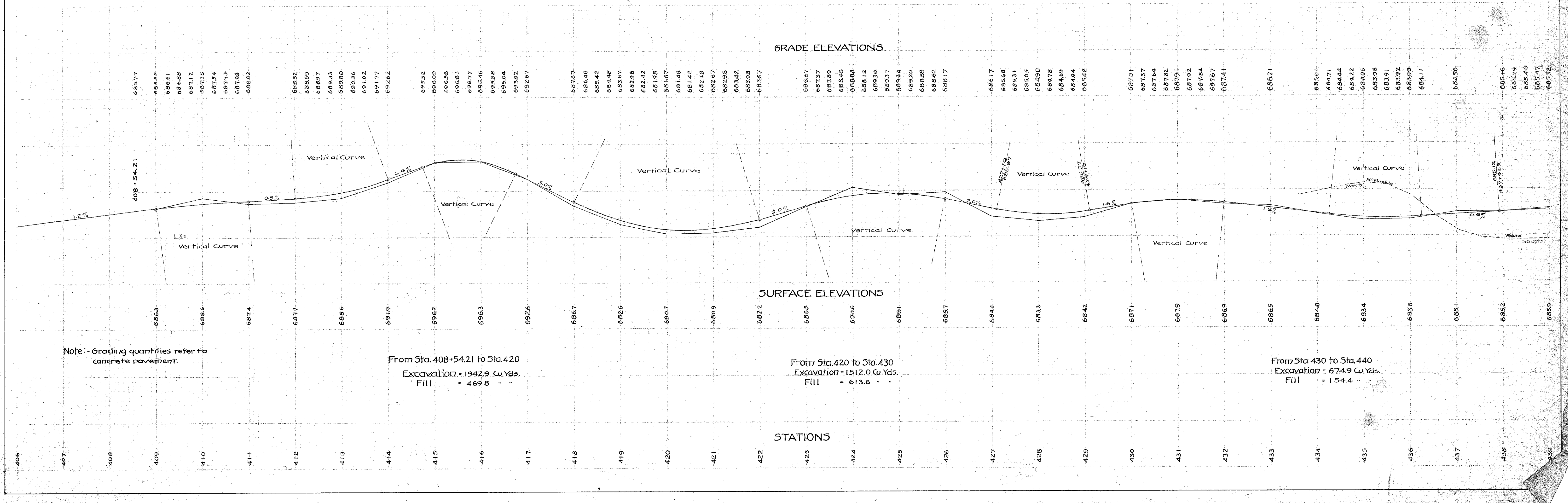
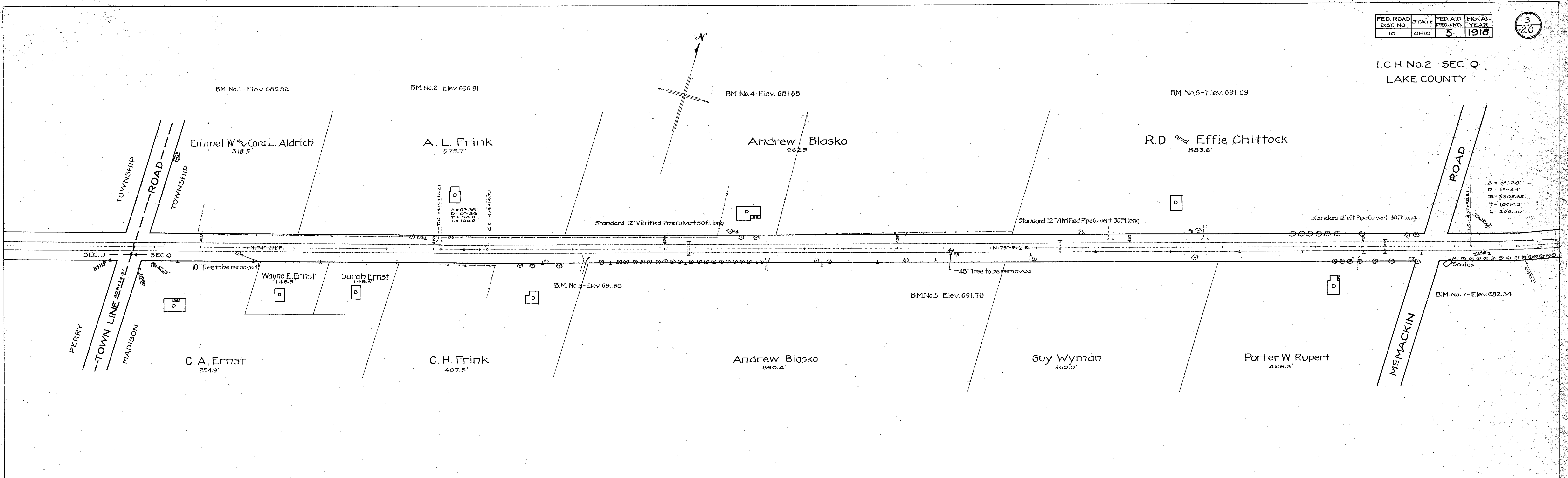


I.C.H.No.2 SEC. Q  
LAKE COUNTY



Note: -grading quantities refer to concrete pavement.

From Sta. 408+54.21 to Sta. 420  
Excavation = 1942.9 Cu. Yds.  
Fill = 469.8

From Sta. 420 to Sta. 430  
Excavation = 1512.0 Cu. Yds.  
Fill = 613.6

From Sta. 430 to Sta. 440  
Excavation = 674.9 Cu. Yds.  
Fill = 154.4