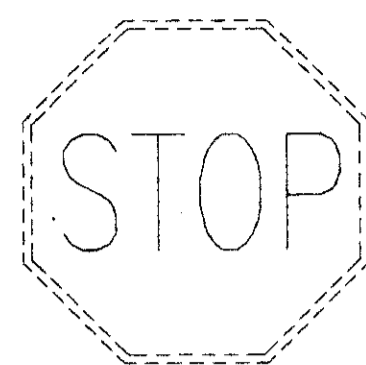


**PED SIGNS**



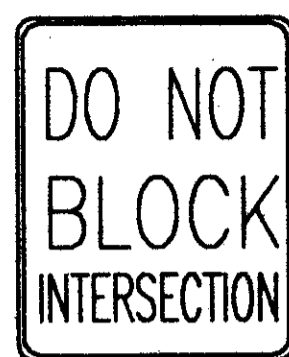
R-73A-9  
225 mm x 300 mm  
QTY = 2

**EXIST SIGNS**



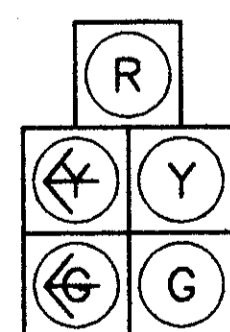
R-1  
900 mm x 900 mm  
QTY = 1

**PROP SIGNS**

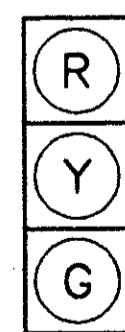


R-88  
600 mm x 760 mm  
QTY = 1

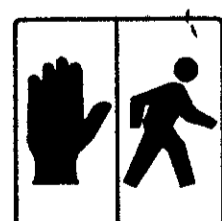
**SIGNALS**



C



A, B, D,  
E, & F



W - W  
TYPE D2

SIGNAL HEADS A, B, C, D, E, F, G & H ARE 305 mm POLYCARBONATE

PROP 51 mm CONDUIT  
RISER FOR INTERCONNECT  
STA 1+560.7, 13.5 m R.

PROP. 450 mm PULLBOX, PB2  
STA 1+560.8, 10.5 m R.

PROP. 2.4 m PEDESTAL, P2 WITH  
PEDESTRIAN SIGNAL AND PUSHBUTTON  
STA. 1+560.2, 9.3 m R.

**GRANT STREET**

PROP. 450 mm PULLBOX, PB1  
STA 1+571.2, 9.7 m R.

PROP. SIGNAL SUPPORT, P1  
TYPE TC-81.20 DES. 1, 4.8 ARM WITH  
PEDESTRIAN SIGNAL AND PUSHBUTTON  
STA. 1+576.8, 5.6 m R.

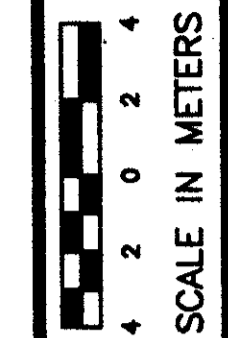
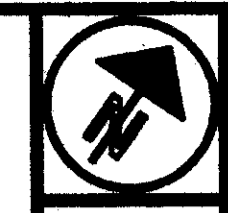
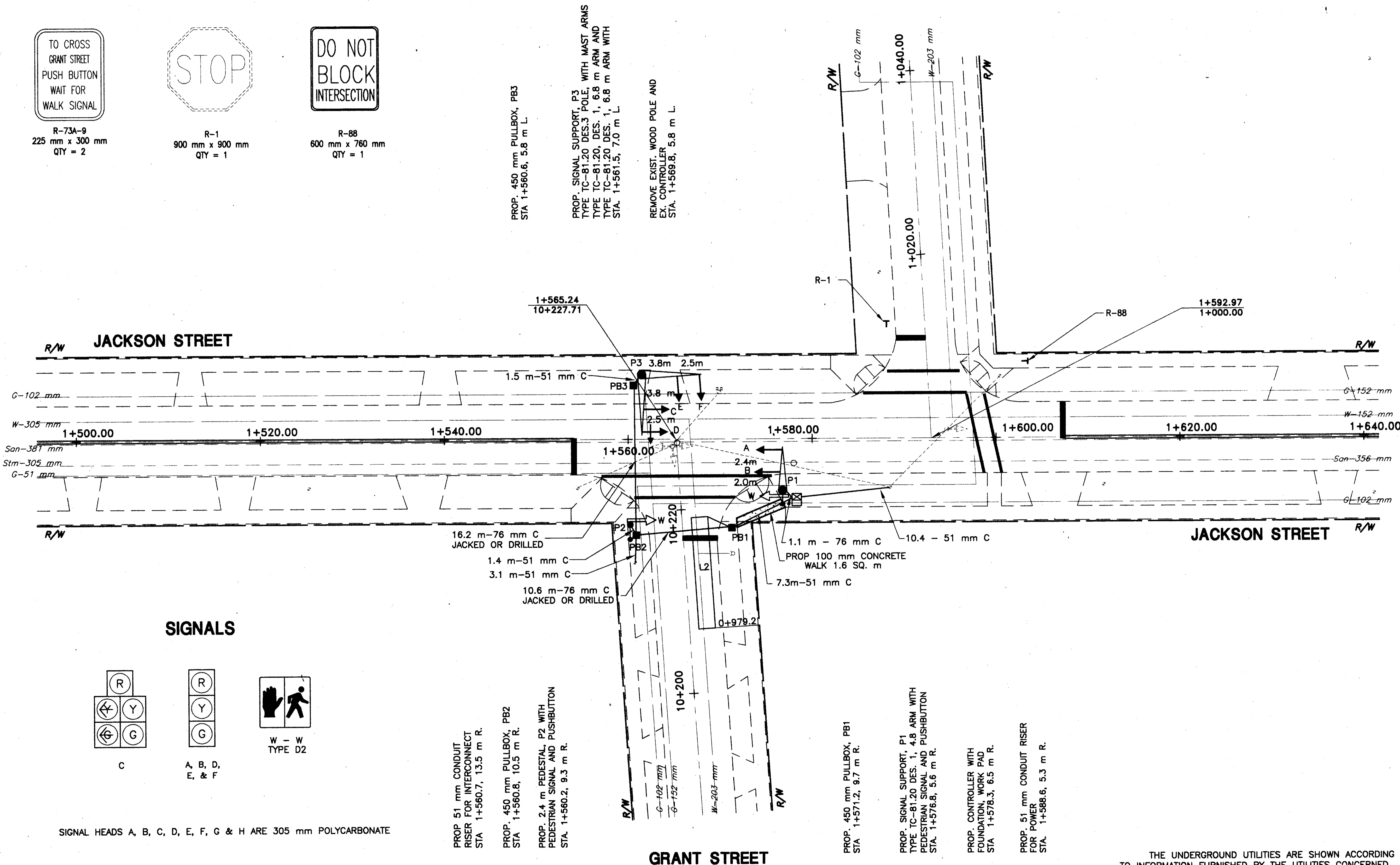
PROP. CONTROLLER WITH  
FOUNDATION, WORK PAD  
STA 1+578.3, 6.5 m R.

PROP. 51 mm CONDUIT RISER  
FOR POWER  
STA. 1+588.6, 5.3 m R.

THE UNDERGROUND UTILITIES ARE SHOWN ACCORDING TO INFORMATION FURNISHED BY THE UTILITIES CONCERNED. THEIR ACCURACY IS NOT GUARANTEED, THEREFORE THEY SHOULD BE RECHECKED BEFORE UNDERGROUND CONSTRUCTION BEGINS.

**EAGLE STREET**

**100% LOCAL**



SCALE IN METERS

CALCULATED

CHECKED

TRAFFIC CONTROL PLAN  
JACKSON STREET & GRANT STREET/WEST EAGLE STREET

LAKE COUNTY  
LAK-20-22.916/VARIOUS