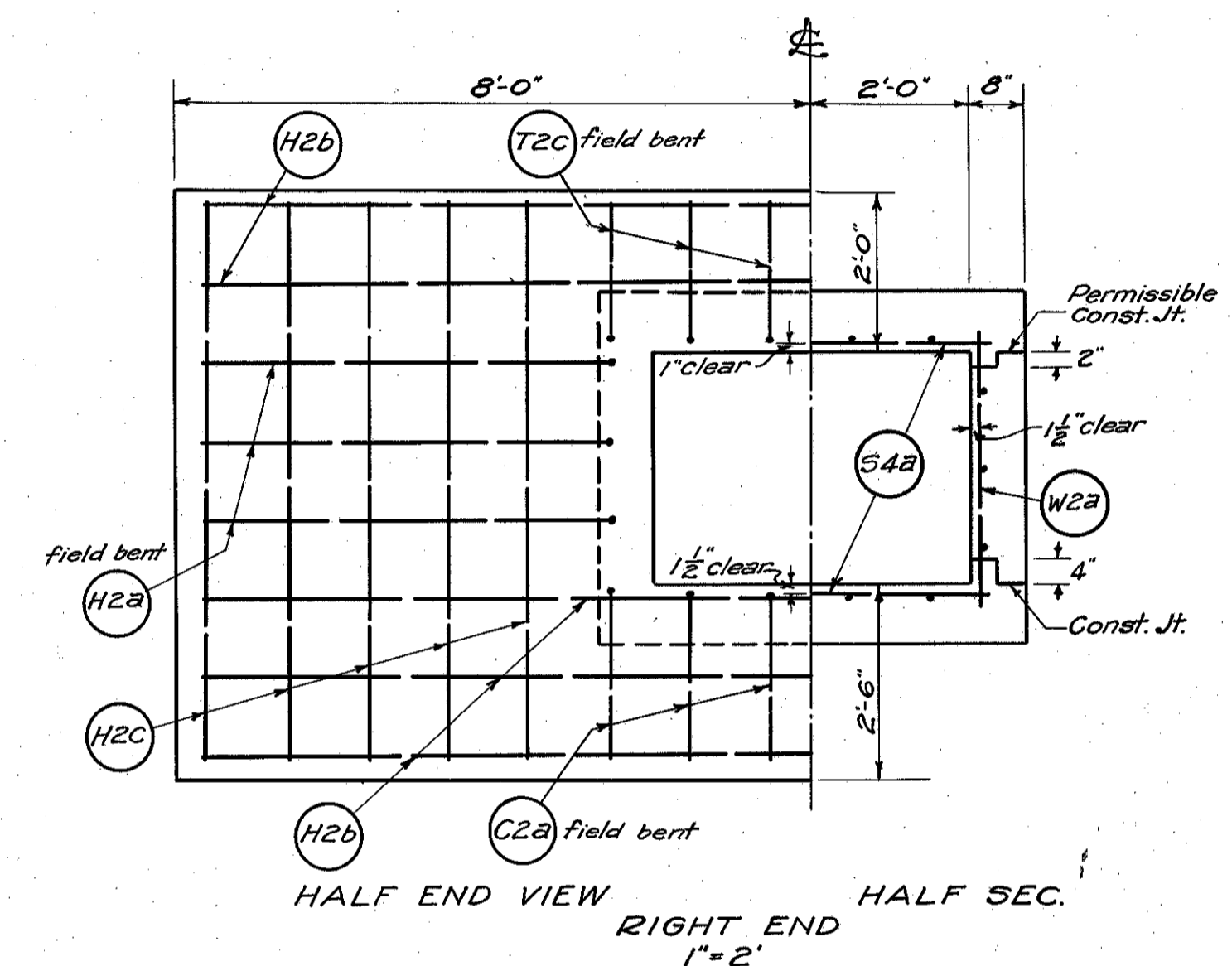
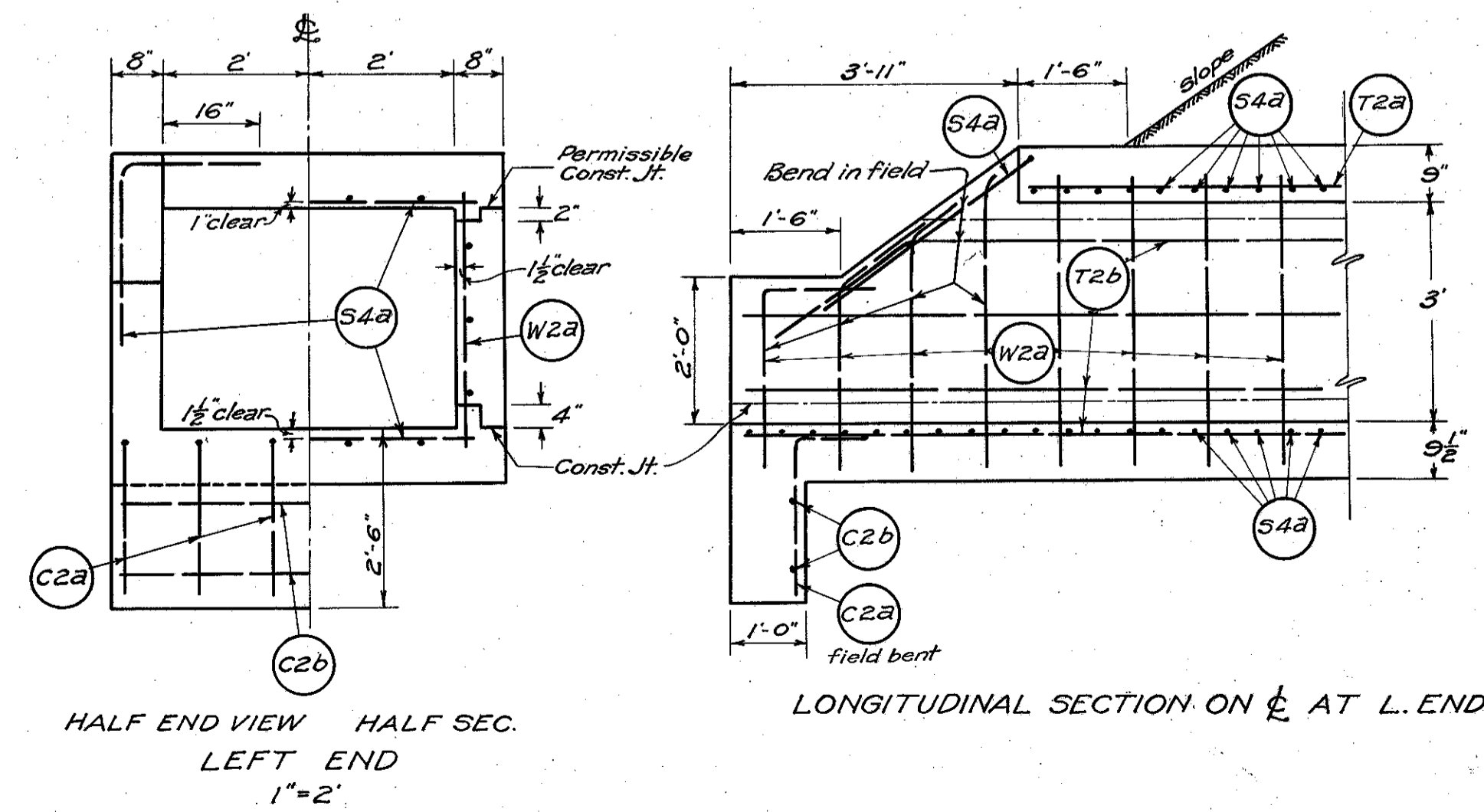


LONGITUDINAL SEC. ON CL AT R. END

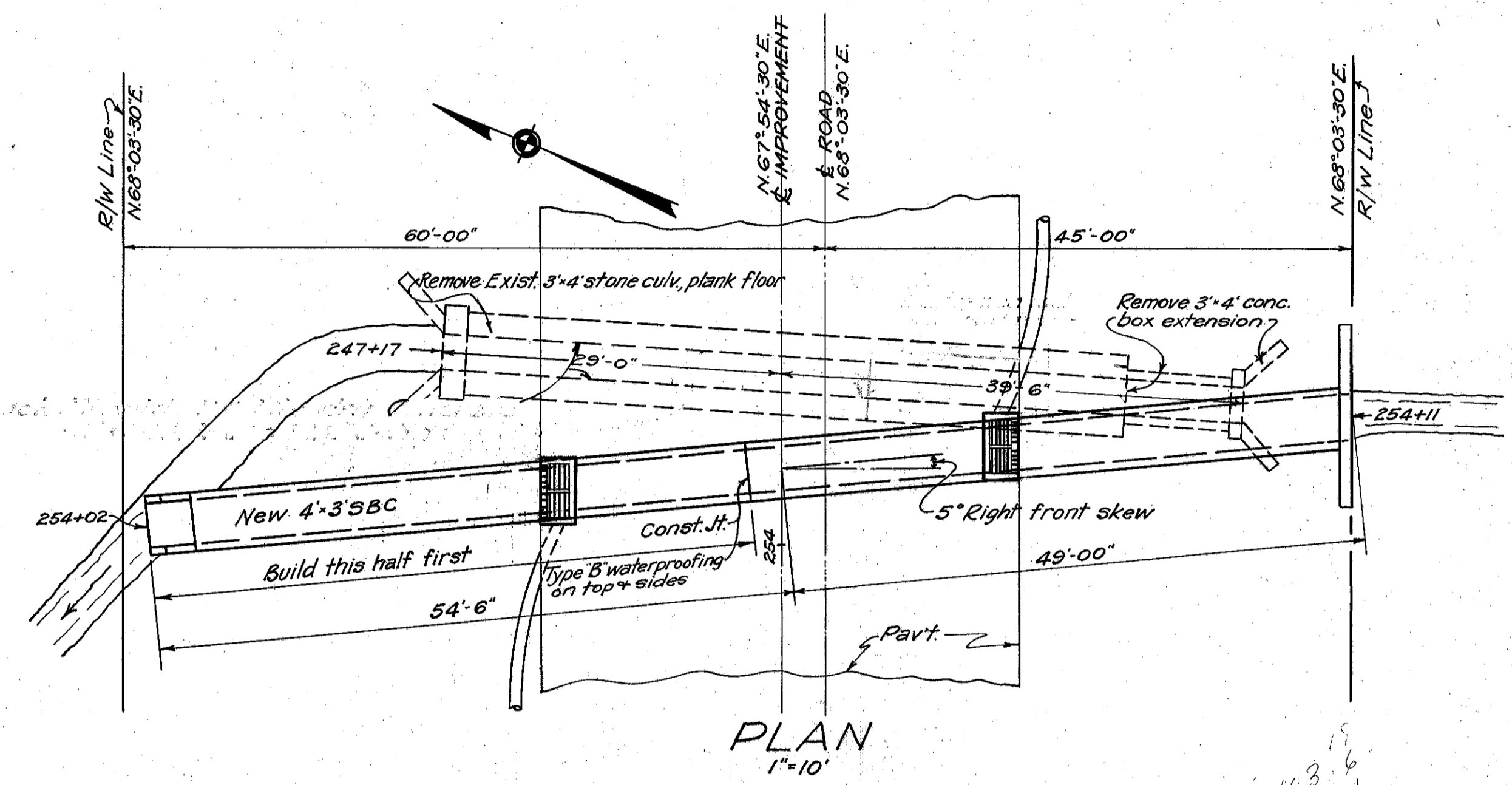


HALF END VIEW RIGHT END HALF SEC. 1"=2"

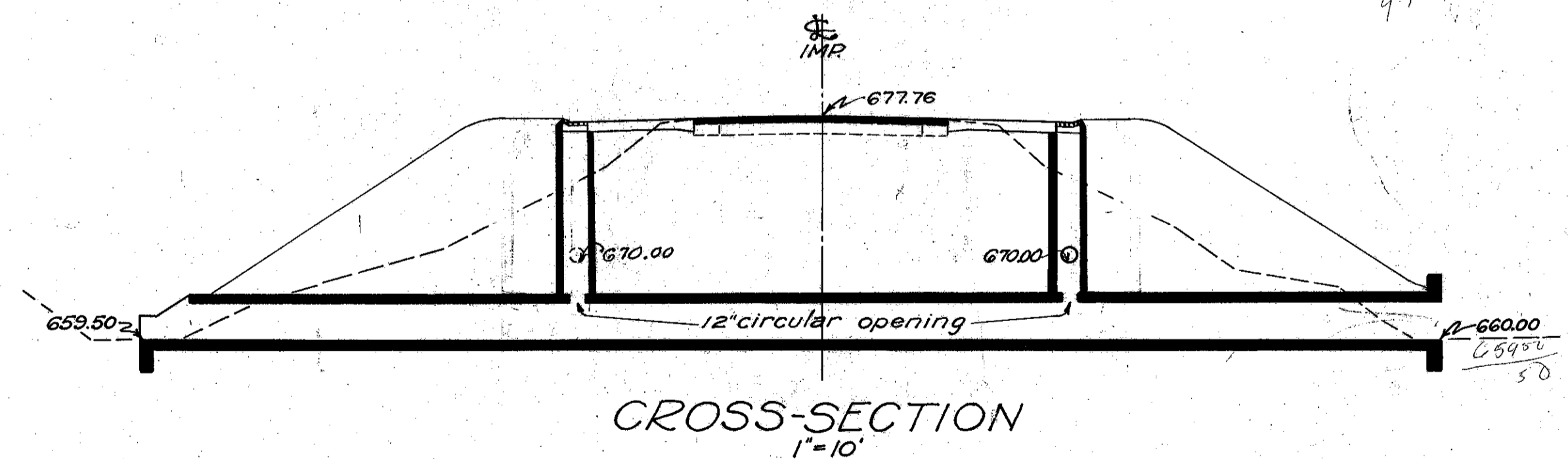


HALF END VIEW LEFT END HALF SEC. 1"=2"

LONGITUDINAL SECTION ON CL AT L. END



PLAN 1"=10"



CROSS-SECTION 1"=10"

STEEL LIST					
MARK	SIZE	Nº	LENGTH	WEIGHT	SHAPE
S4a	3/8"	487	5'-1"	2590	Straight
T2a	1/2"	16	26'-3"	281	"
T2b	1/2"	40	27'-3"	728	"
T2c	1/2"	6	2'-9"	11	Field Bent
C2a	1/2"	12	3'-3"	27	"
C2b	1/2"	2	5'-1"	7	Straight
W2a	1/2"	207	4'-0"	553	"
H2a	1/2"	6	9'-9"	39	Field Bent
H2b	1/2"	5	15'-6"	52	Straight
H2c	1/2"	10	7'-0"	47	"
TOTAL				4335	

QUANTITIES

- E-8 31.1 Sq. Yds. Removal & Disposal of existing part.
- E-2 375 Cu. Yds. excavation, unclassified
- E-3 5 Cu. Yds. channel excavation
- S-24 Lump Removal of existing structure.
- S-1 50.06 Cu. Yds. 1:5 1/2 concrete
- S-4 4335 Lbs. reinforcing steel
- S-3 4 Sq. Yds. type B waterproofing
- I-8 2 Std. No. 11-A Catch Basins.

CULVERT DATA
 Type: Conc. Box Std. Drwg. SBC-34
 Size: 4'x3'x103.5'
 Work Required: Build std. 4'x3'x103.5' small box culv. Build two No. 11-A C.B. and connect to box Culv. as shown. Connect Storm Sewer pipe to C.B's.

See Sheet 7 (60)

CULVERT AT STA. 254+06.5