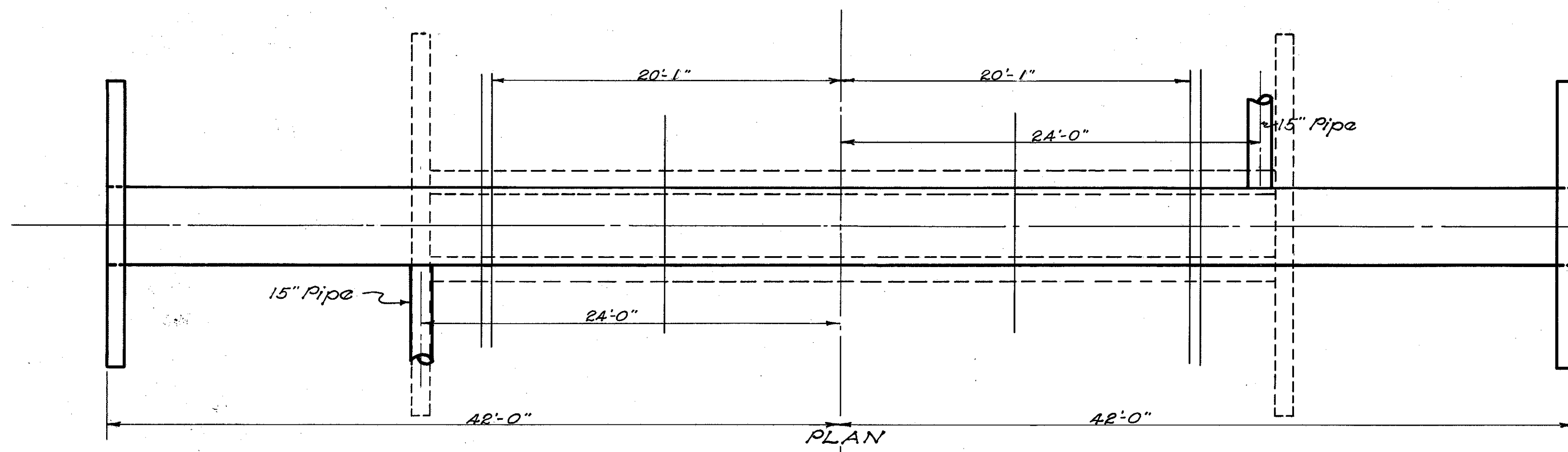


**STRUCTURE 8-C SHEET NO. 5  
STA. 199+58.5**

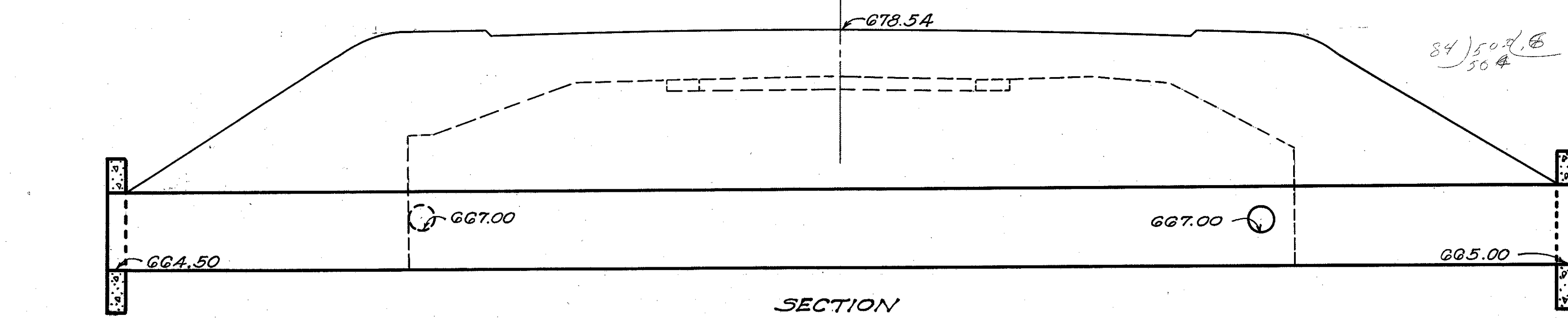
FED. RD. DIST. NO.	STATE	FEDERAL AID PROJECT	FISCAL YEAR	28 31
10	OHIO	4(3)	1938	

LAKE COUNTY  
S.H. 2 SEC. J (PT.)



PLAN

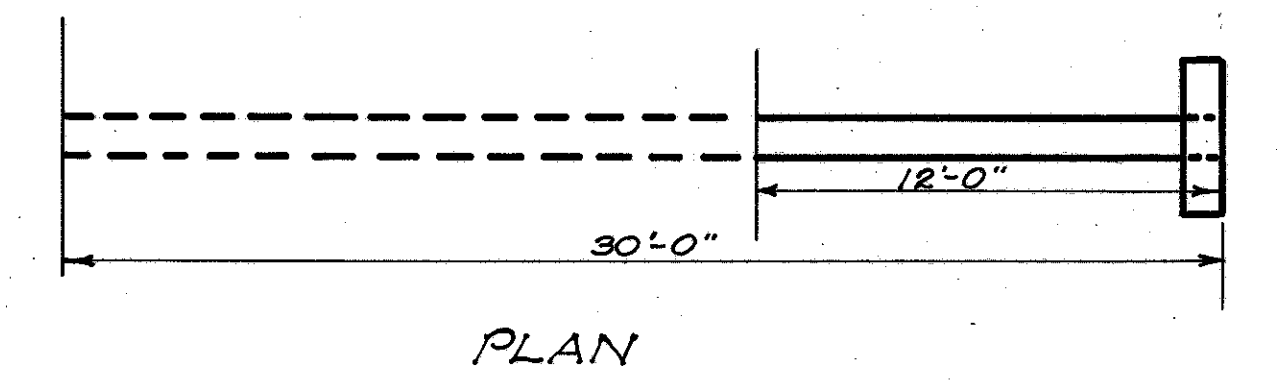
**CULVERT DATA**  
Type: Pipe Culvert.  
Size: 54" x 84"  
Work Required: Remove existing Stone Box Culvert and build New 54" x 84" pipe culvert with Std. Headwall on Rt. and Lt.



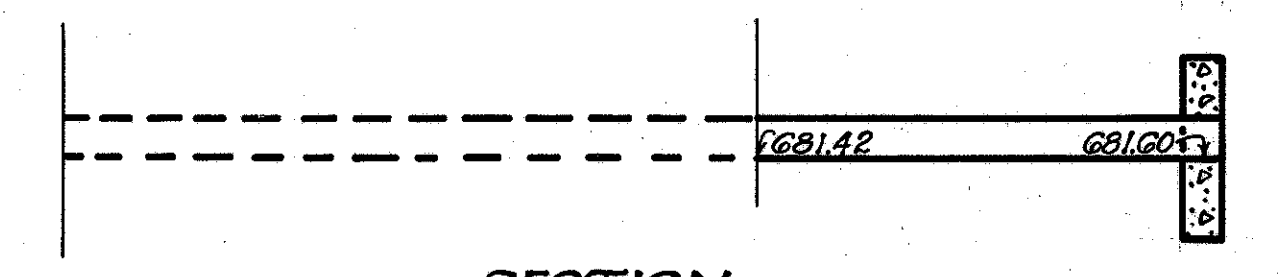
SECTION

**ESTIMATED QUANTITIES**  
Removal of Portions of Existing Structure 52.0 Cu. Yd.  
Excavation 107 Cu. Yd.  
Concrete (1:5 1/2 Mix) 8.5 " "  
54" Pipe for Culvert 84 Lin. Ft.  
Steel 124 Lbs.

**STRUCTURE 11-C SHEET NO. 5  
STA. 178+70**



PLAN

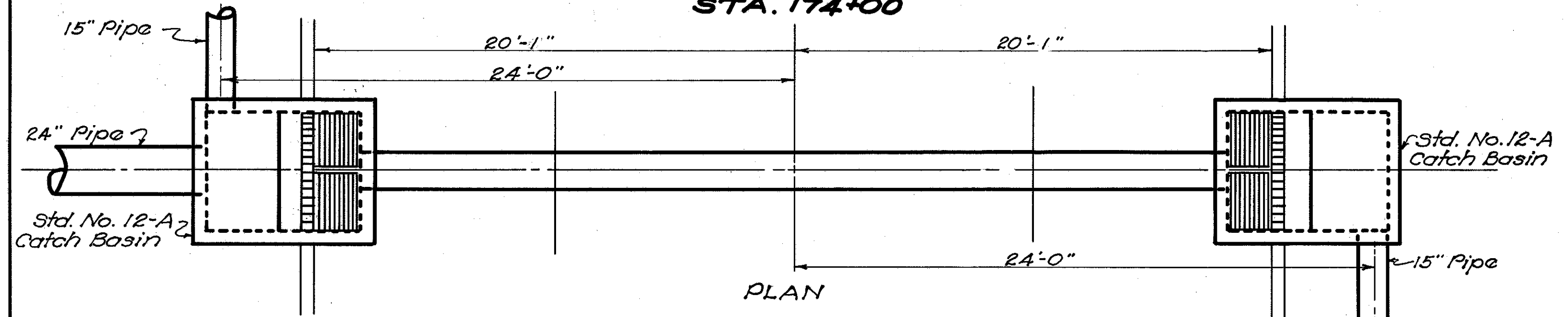


SECTION

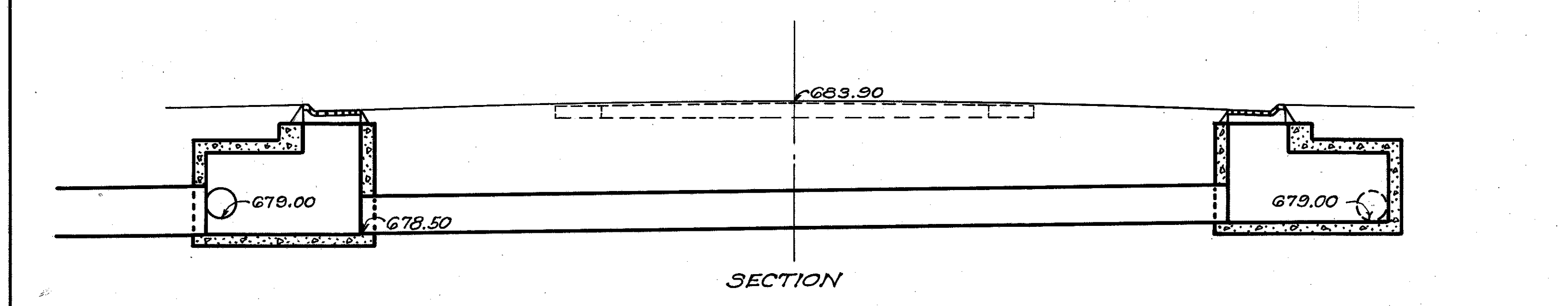
**CULVERT DATA**  
Type: Pipe  
Size: 12" x 12"  
Work Required: Extend existing 12" Pipe Culvert 12' to Rt. and build Std. Headwall on Rt.

**ESTIMATED QUANTITIES**  
Excavation 2 Cu. Yd.  
12" Pipe for Culvert 12 Lin. Ft.  
Concrete (1:5 1/2 Mix) 0.7 Cu. Yd.  
Steel 20 Lbs.

**STRUCTURE 1-C SHEET NO. 5  
STA. 174+00**



PLAN

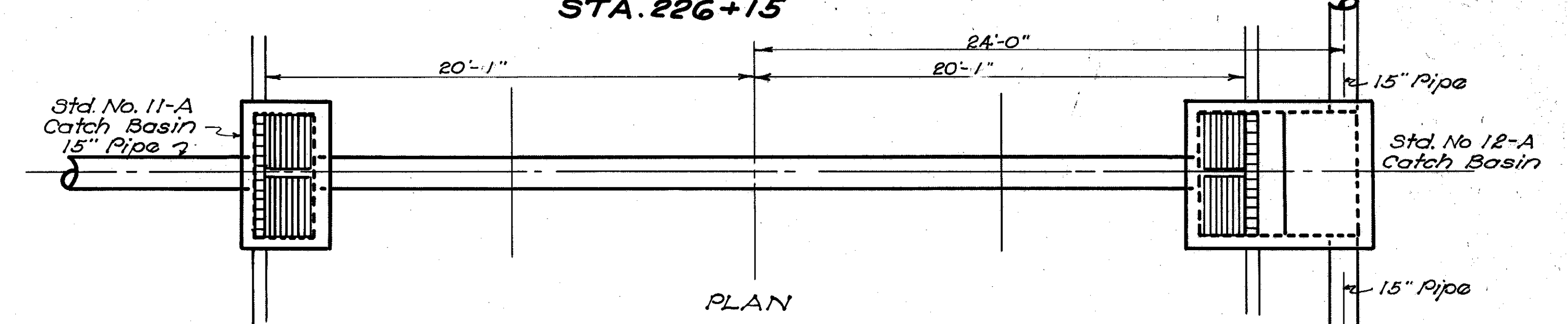


SECTION

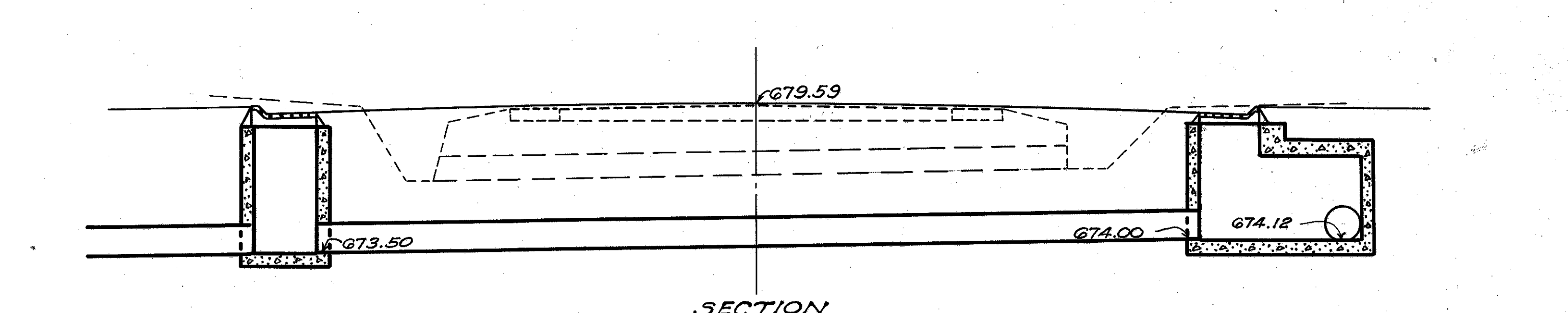
**CULVERT DATA**  
Type: Pipe Culvert.  
Size: 18" x 37"  
Work Required: Build Std. 18" x 37" Pipe Culvert with Std. No. 12-A Catch Basin on Rt. & Lt. Connect S.S. pipe to New Basins on Rt. & Lt.

**ESTIMATED QUANTITIES**  
Excavation 20 Cu. Yds.  
18" Pipe for Culvert 37 Lin. Ft.  
Std. No. 12-A Catch Basins 2 Each.

**STRUCTURE 5-C SHEET NO. 6  
STA. 226+15**



PLAN



SECTION

**CULVERT DATA**  
Type: Pipe Culvert  
Size: 15" x 37"  
Work Required: Remove existing 12" x 28" C.I. pipe. Build Std. 15" x 37" Pipe Culvert with Std. No. 12-A Catch Basin on Rt. and Std. No. 11-A Catch Basin on Lt. Connect 15" S.S. Pipe to Std. No. 12-A on Rt.

**ESTIMATED QUANTITIES**  
Excavation 25 Cu. Yds.  
12" C.I. Pipe Removed & Stored 28 Lin. Ft.  
15" Pipe for Culvert 37 Lin. Ft.  
Std. No. 12-A Catch Basin 1 Each.  
Std. No. 11-A Catch Basin 1 Each.