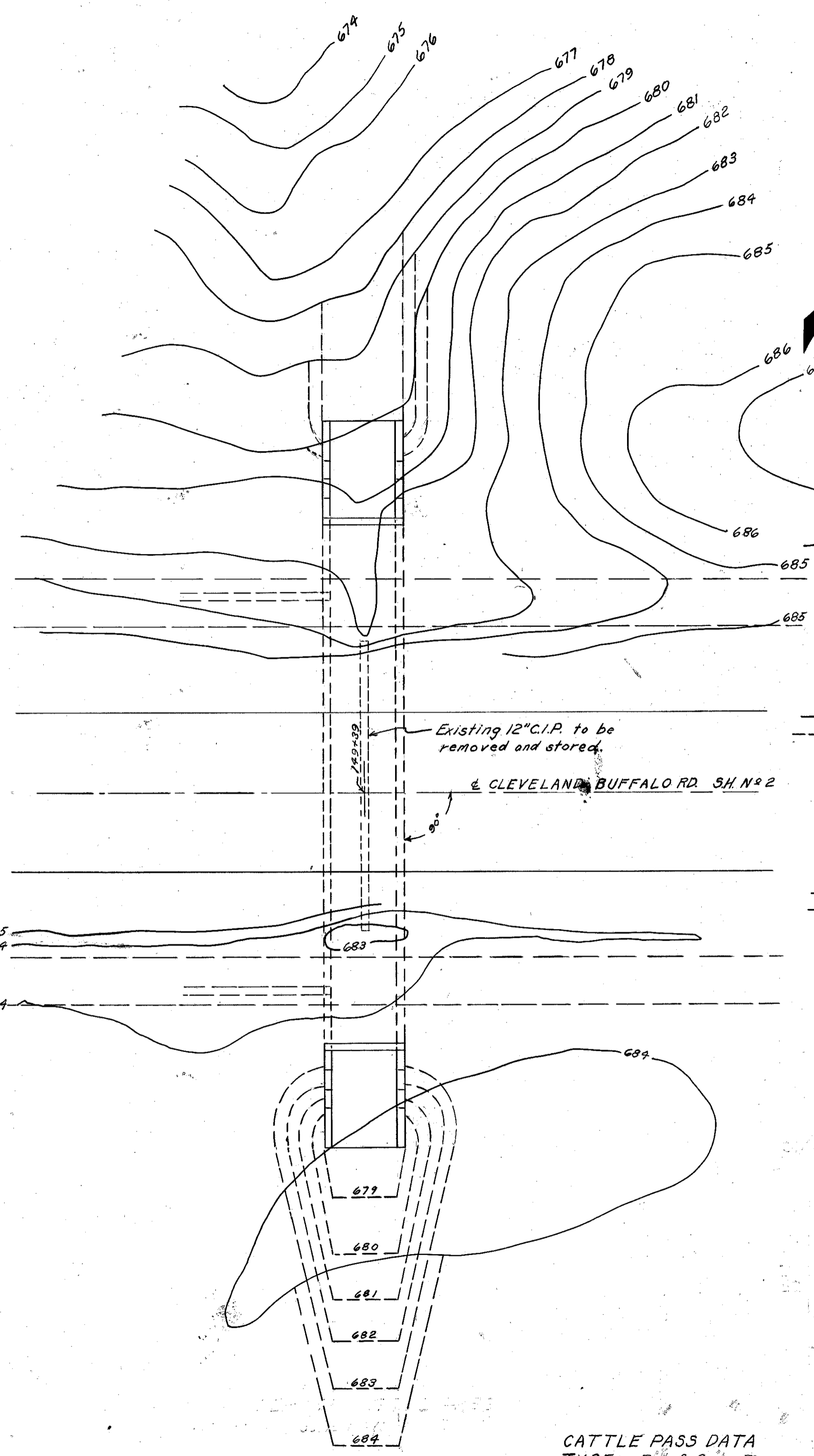


LAKE COUNTY  
S.H. N<sup>o</sup> 2 SEC. J (P)

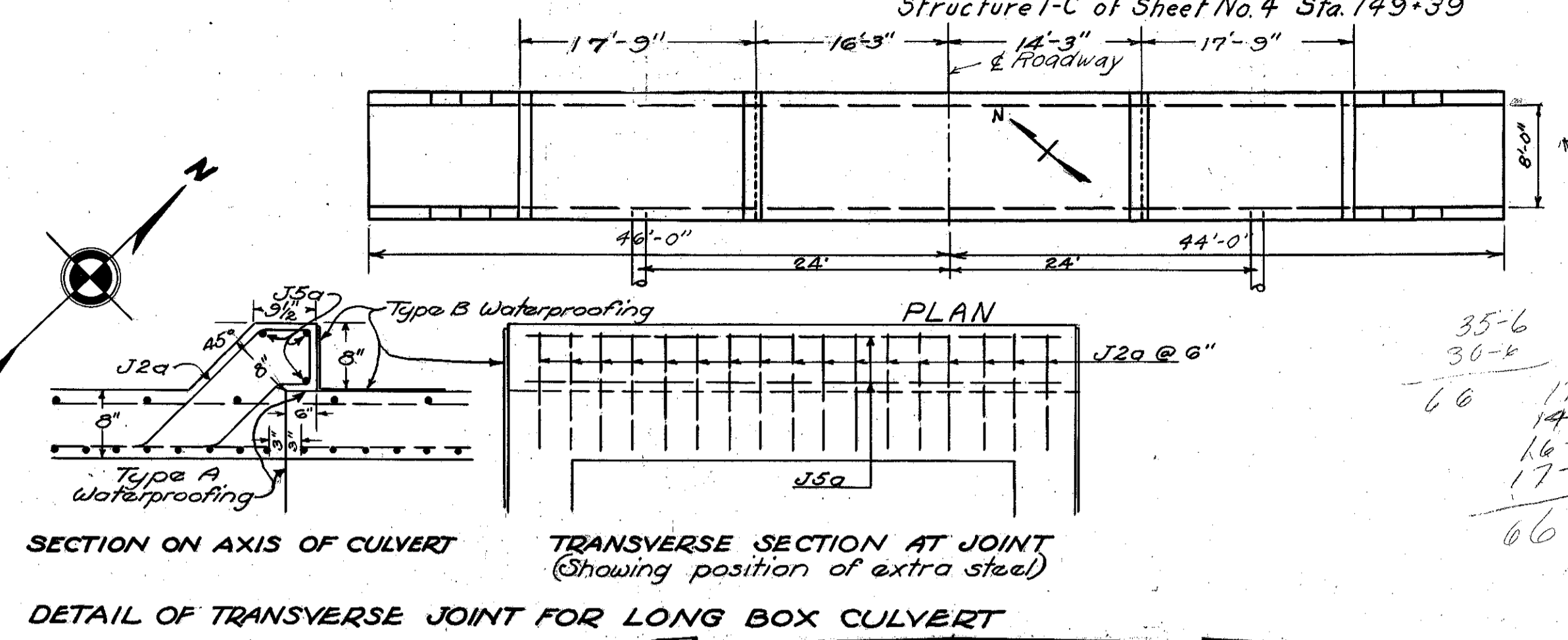
### CATTLE PASS

Structure I-C of Sheet No. 4 Sta. 149+39

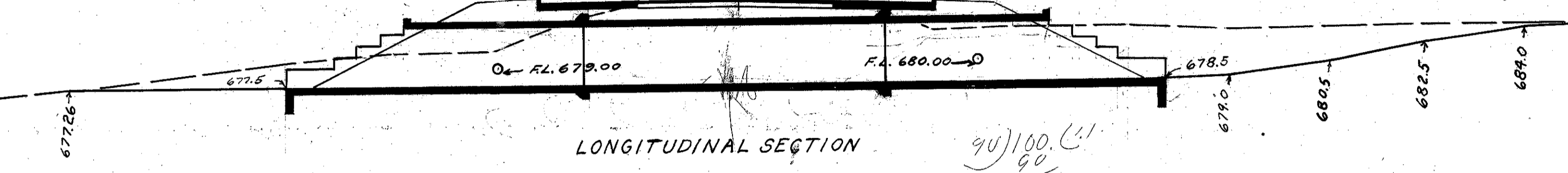


PLAN OF CATTLE PASS  
Scale 1"=10'

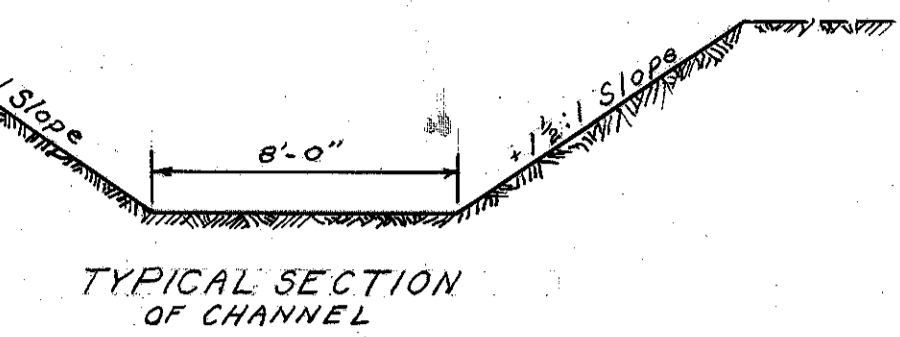
**CATTLE PASS DATA**  
 TYPE: - Reinf. Conc. Box  
 SIZE: - 8'x6'x9'0"  
 WORK REQUIRED: Build Std. 8'x6' Large Box Culvert.



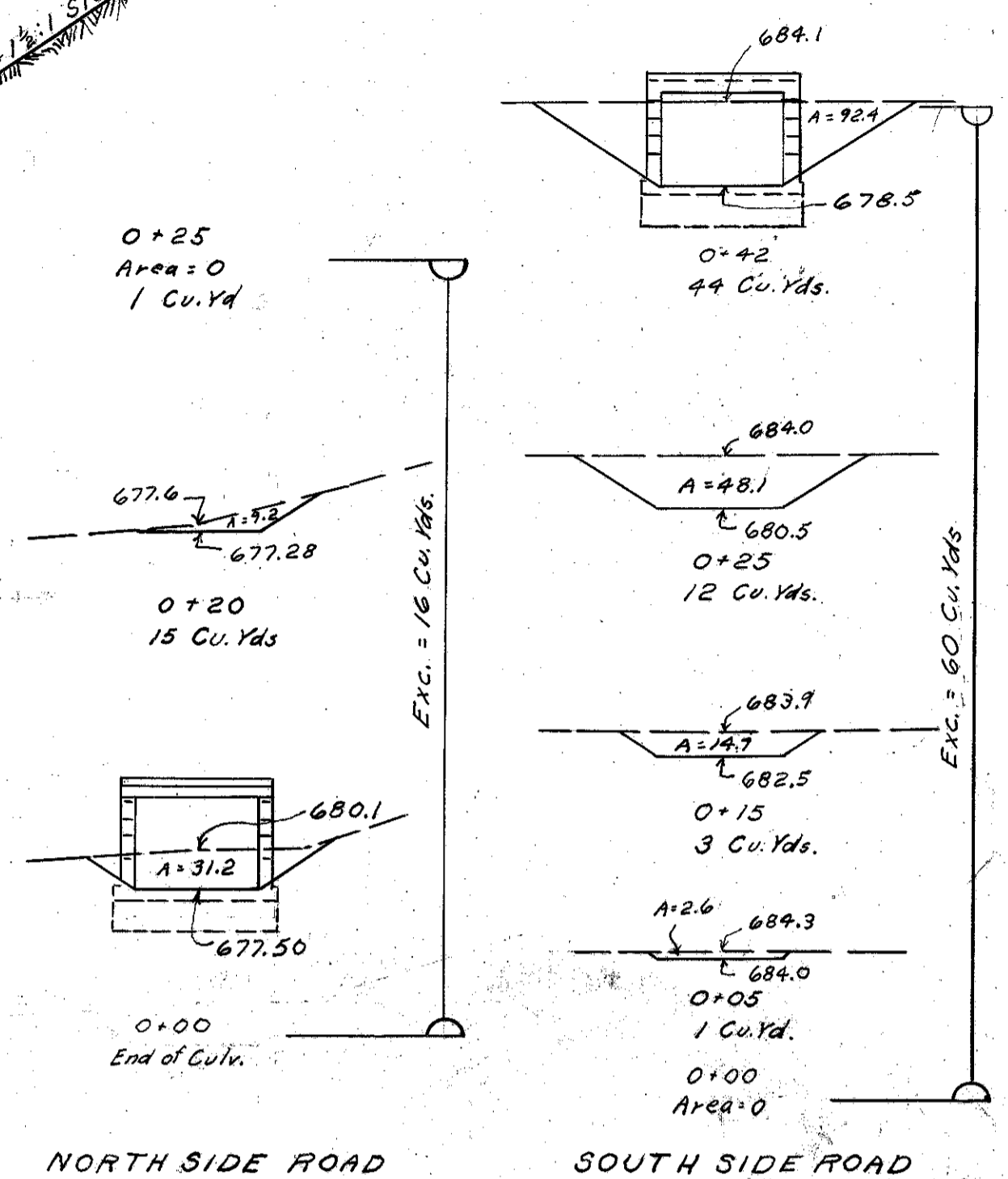
SECTION ON AXIS OF CULVERT  
 TRANSVERSE SECTION AT JOINT (Showing position of extra steel)  
 DETAIL OF TRANSVERSE JOINT FOR LONG BOX CULVERT



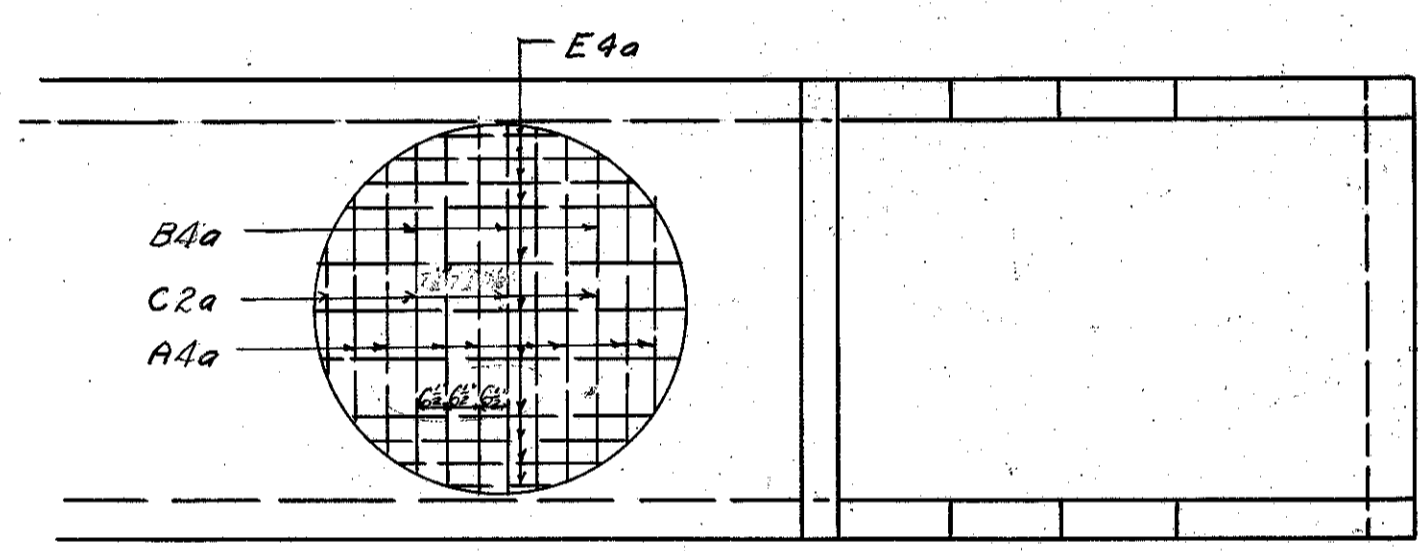
LONGITUDINAL SECTION



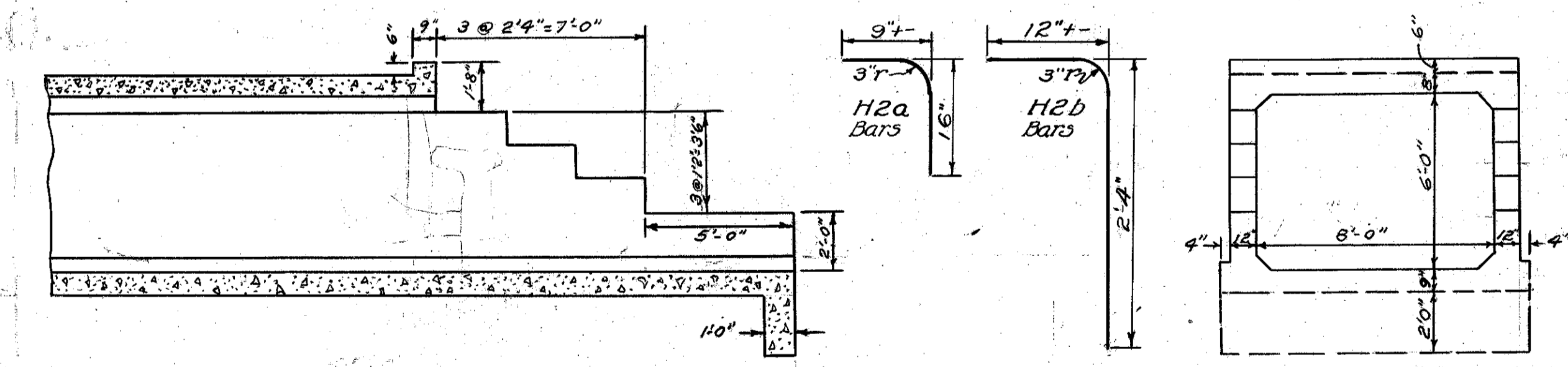
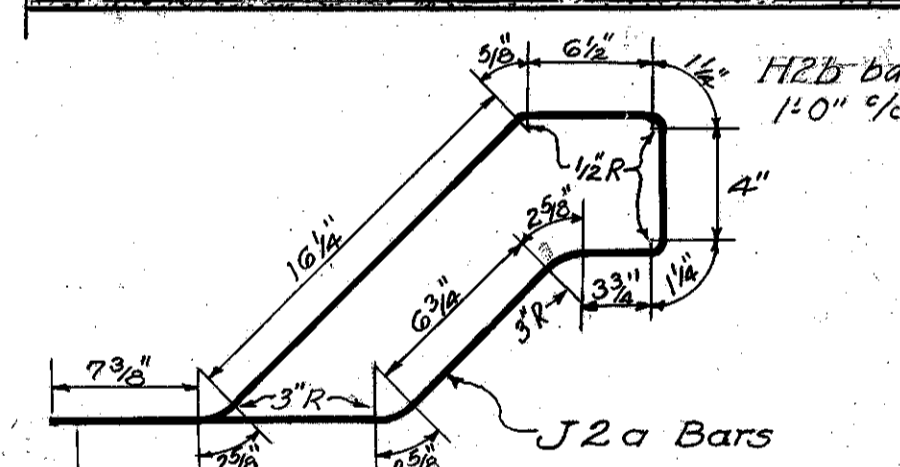
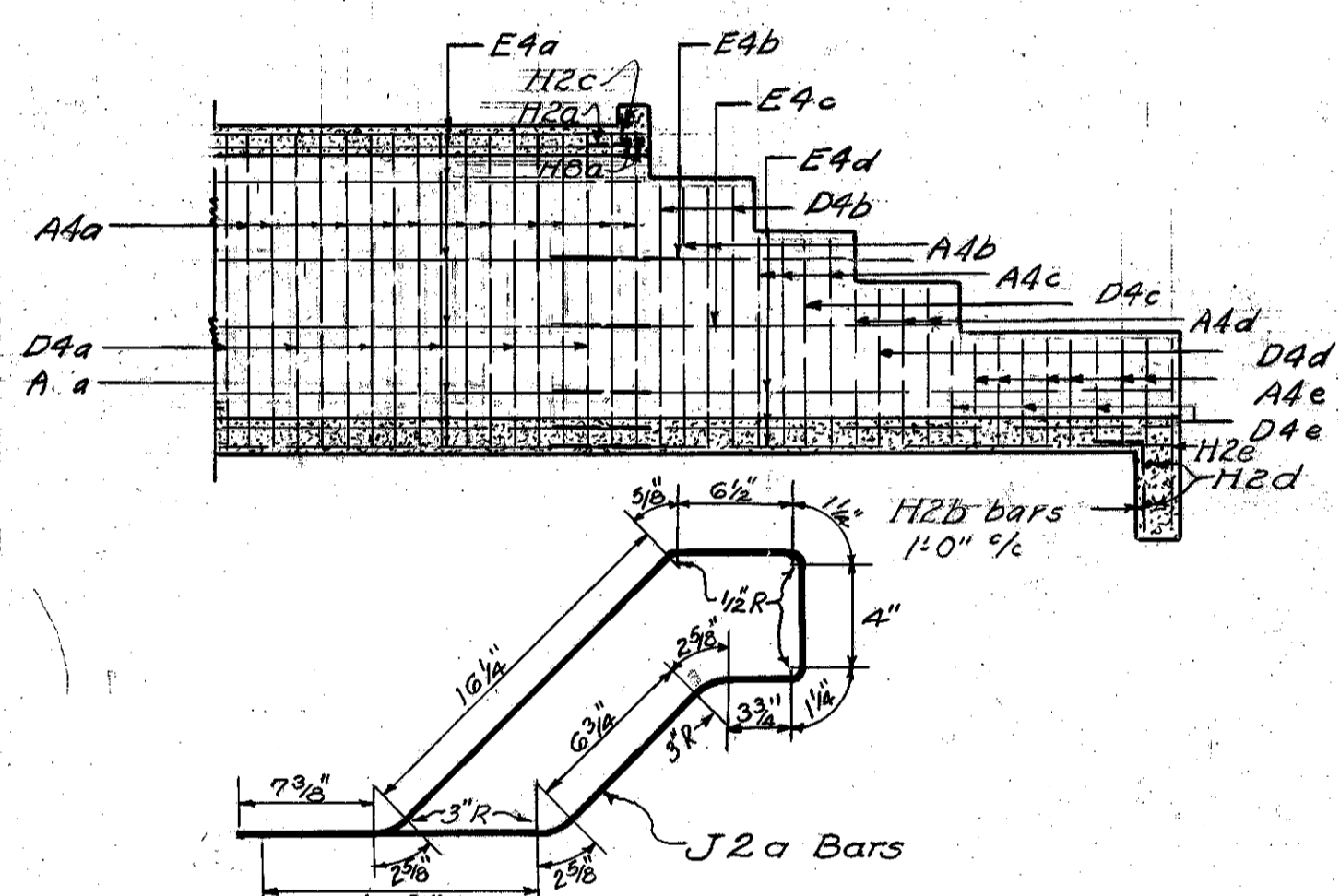
TYPICAL SECTION OF CHANNEL



NORTH SIDE ROAD SOUTH SIDE ROAD

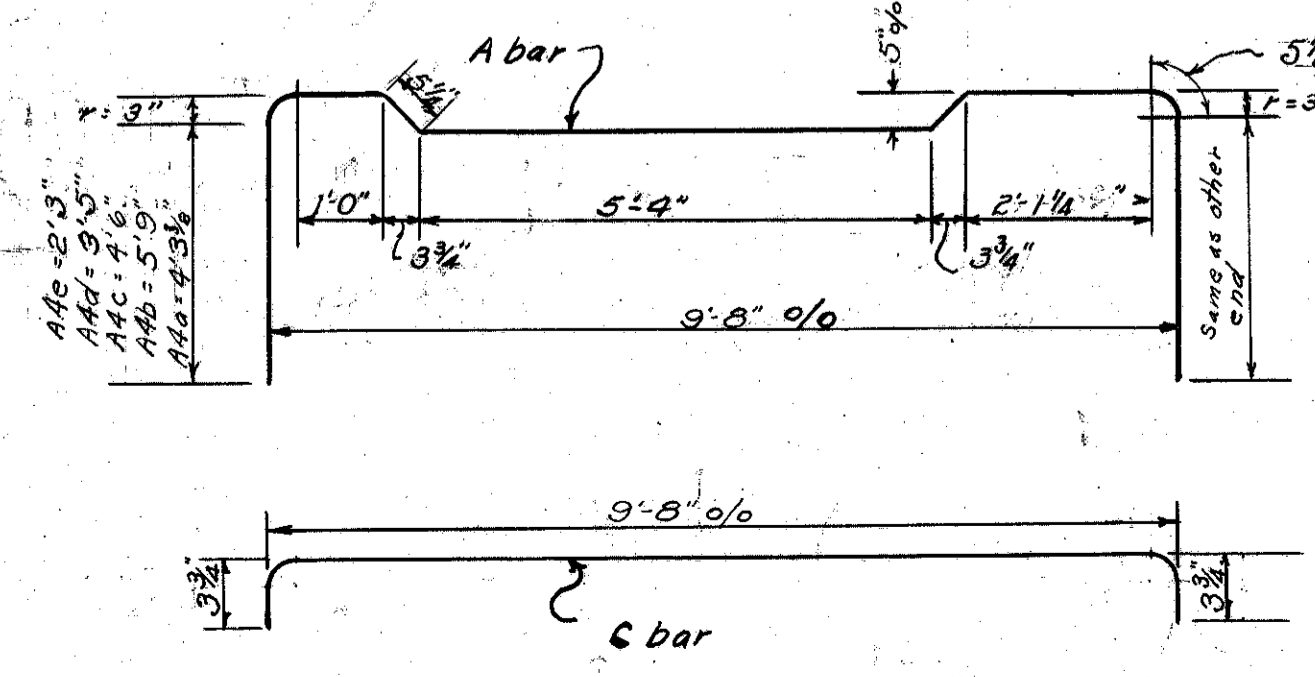


PART PLAN



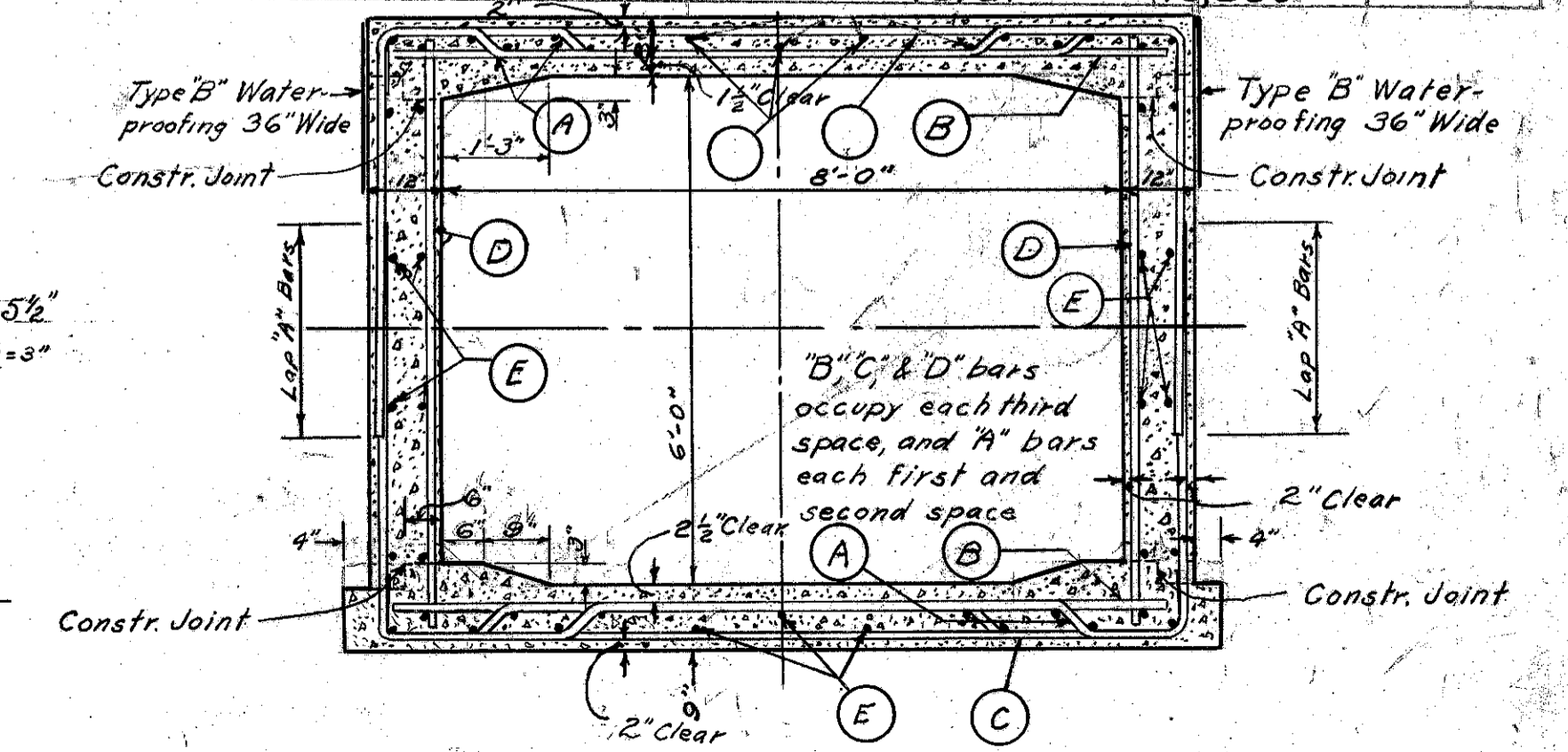
SECTION ON BARREL

END VIEW



BENDING DIAGRAMS

STEEL LIST						
MARK	SIZE	SPACING	NO	LENGTH	WEIGHT	SHAPE
A4a	3/8"	6 1/2"	162	18'-9"	3171	Bent
A4b	"	"	4	21'-8 1/4"	91	"
A4c	"	"	6	19'-2 1/4"	120	"
A4d	"	"	6	17'-0"	106	"
A4e	"	"	12	14'-8 1/4"	134	"
B4a	"	19 1/2"	96	9'-6"	952	Straight
C2a	1/2"	"	96	10'-0"	641	Bent
D4a	5/8"	"	82	7'-0"	599	"
D4b	"	"	8	6'-0"	50	"
D4c	"	"	4	4'-9"	20	"
D4d	"	"	4	3'-7"	15	"
D4e	"	"	12	2'-5"	30	"
E4a	as shown	"	50	30'-0"	1566	Straight
E4b	"	"	8	7'-0"	58	"
E4c	"	"	8	9'-6"	79	"
E4d	"	"	24	14'-6"	363	"
H2a	1/2"	1'-0"	22	2'-0"	29	Bent
H2d	"	1'-0"	22	3'-6"	51	"
H2c	as shown	"	2	9'-8"	13	Straight
H2d	"	1'-0"	4	9'-8"	26	"
H2e	as shown	"	8	4'-6"	24	"
H2a	1"	"	4	9'-8"	132	"
E4e	5/8"	as shown	100	17'-3"	1801	"
J2a	1/2"	6"	80	5'-9"	307	Bent
J5a	3/4"	as shown	12	9'-6"	171	Straight
<b>Total</b>					<b>10,599</b>	



TYPICAL SECTION

**ESTIMATED QUANTITIES**

E-8	55.5 Sq. Yds. Rem. & Disp. of Exist. Pav't.
E-2	333 Cu. Yds. excavation, unclassified
E-3	76 Cu. Yds. Channel Excavation
S-1	81.8 Cu. Yds. 1:5 1/2 Concrete
S-4	10,599 lbs. reinforcing steel
S-3	62 Sq. Yds. Type B Waterproofing
I-2	4 Lin. Ft. 12" Pipe for sewers
I-6	36 Lin. Ft. 12" C.I.P. removed & stored
S-3	7 Sq. Yds. type A Waterproofing

"B" "D" & "E" bars are straight