

Item No.	Station	Side	Exc. Cu. Yds.	Emb. Cu. Yds.	Exc. Cu. Yds.	Emb. Cu. Yds.
1-D	238+47	R	0.6	15.0	0.52	15.0
2-D	241+85	L	3.7	20.0	1.86	20.0
3-D	244+74	L	1.3	20.0	0.93	20.0
4-D	244+71	L	3.2	20.0	1.86	20.0
5-D	246+87	L	7.0	0.1	20.0	0.93
6-D	248+10	L	0.1	20.0	0.93	20.0
7-D	249+31	L	0.2	20.0	0.93	20.0
8-D	251+48	L	1.6	0.1	20.0	0.93
9-D	251+38	L	1.1	0.1	20.0	0.93
10-D	251+00	L	0.8	20.0	0.93	20.0
11-D	258+40	L	1.9	20.0	1.86	20.0
12-D	259+38	L	0.3	20.0	0.93	20.0
13-D	260+25	L	0.1	20.0	0.93	20.0
14-D	261+45	L	2.2	20.0	1.86	20.0
15-D	263+10	L	0.3	20.0	0.93	20.0
16-D	270+40	L	0.2	20.0	0.93	20.0
TOTAL			12.6	12.8	120.60	120.93

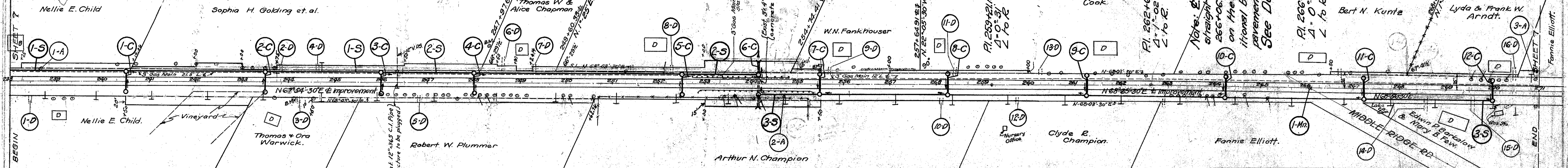
Item No.	Station	Ft. Ror L	Size	AERATION		RIPRAP WALLS	
				Cu. Yds. Agg.	Sq. Yds. Riprap Well 1 1/2" thick	Length	Height
1-A	238+65	22'L	10"	3.4	4.7		
2-A	254+70	23'A	14"	14.8	12.3		
3-A	270+90	22'L	6"	2.7	4.5		
TOTAL				20.9	21.5		

No.	Station	Description	Elevation
21	244+13	Spikes 15' Mark 32' Rd 5'	683.20
22	244+32	" 20' " 21' of 5'	676.29
23	255+40	" 26' " 29' of 5'	680.71
24	259+40	" 30' " 37' of 5'	681.78
25	265+59	" 28' " 29' of 5'	681.00

MONUMENT CASTING RESET (M)
 1/4" Station 266+06.46 on E
 Total 1

FED. RD DIST. NO.	STATE	FED. AID PROJECT	FISCAL YEAR
10	OHIO	4(3)	1938

LAKE COUNTY SEC. J (PH)
 S.H. No. 2



Item No.	Station	Type	Size	Excav. Cu. Yds.	Concrete Cu. Yds.	Reinf. Steel Lbs.	Water in Pipe Sq. Yds.	Masonry Type B' Sq. Yds.	Chimney Lump	Std. No. 11-A Catch Basin Each		Work Required
										Each	Each	
1-C	240+50	PIPE	12"x31"	16.0	37					R	L	Build Std. 12"x31" Pipe Culv.
2-C	243+50	PIPE	12"x31"	16.0	37					R	L	" " " " " " " "
3-C	246+00	PIPE	12"x31"	16.0	37					R	L	" " " " " " " "
4-C	248+00	PIPE	12"x31"	16.0	37					R	L	" " " " " " " "
5-C	252+50	PIPE	12"x31"	16.0	37					R	L	" " " " " " " "
6-C	254+07	Conc. box	4'x3'	3750	5000	4335	4	Lump	5	R	L	Build Std. 4'x3' Conc. Cul. See Detail on Sheet # 30
7-C	255+50	PIPE	12"x31"	16.0	37					R	L	Build Std. 12"x31" Pipe Culv.
8-C	258+25	PIPE	12"x31"	16.0	37					R	L	" " " " " " " "
9-C	261+25	PIPE	12"x31"	16.0	37					R	L	" " " " " " " "
10-C	264+25	PIPE	12"x31"	16.0	37					R	L	" " " " " " " "
11-C	267+25	PIPE	12"x31"	16.0	37					R	L	" " " " " " " "
12-C	270+00	PIPE	12"x31"	16.0	37					R	L	" " " " " " " "
TOTALS				551.0	407	5000	4	Lump	5	13	11	See Details on Sheet # 28, 29, 30

Item No.	Station	Right or Left	Pipe for St. Sewers Lin. Ft.		15" Storm Sewer under Sidewalk
			15"	18"	
1-S	238+00	246+00	245L	748	
2-S	246+00	254+00	L	732	
3-S	254+00	270+00	R	1384	100
TOTALS				2132	732

No.	Station	Ft. R or L	Size & Kind
1	248+13	23 R	10" Cherry
2	248+28	23 R	10" Cherry
3	248+46	24 R	12" Cherry
4	249+34	23 R	10" Cherry
5	250+10	23 R	10" Cherry
6	250+59	25 R	10" loc.
7	253+42	25 R	10" loc.
8	253+65	23 R	10" loc.
9	253+69	25 R	10" loc.
10	254+13	26 R	10" loc.
11	263+83	19 R	10" Cherry
12	263+97	19 R	10" Cherry
13	264+67	14 R	30" Stump
14	265+15	20 R	30" Stump
15	269+56	20 L	12" Cherry
16	269+75	20 L	12" Birch
17	270+28	20 L	14" maple
18	270+28	20 L	23" elm

